

FOOD CHAIN

1) What is the difference between a food web and the food chain?

superpredators - food web - food chain - succession - nutrition - lower level - autotroph - prey - phytoplankton - last - food chains - predator - ecosystem

A _____
is a _____
living organisms in
which each eats

organisms to acquire
energy. The first link
of a chain is always an

In seas and oceans,

assume this role.
Humans are often the

element of the chain :
They are

A _____
is a set of intercon-
nected

that make up an

and through which
energy and biomass
flow.

This term refers to
anything that is relat-
ed to the

of a living tissue or
organ. For example, a
trophic relationship is
the link between the

and its _____
in the ecosystem.



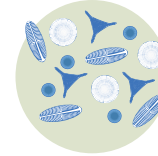
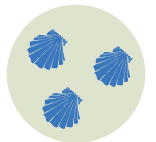
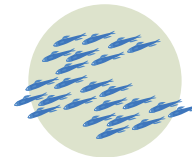
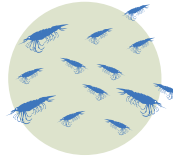
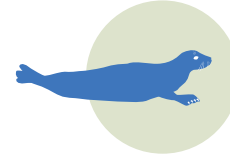
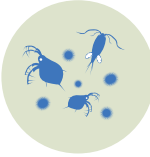
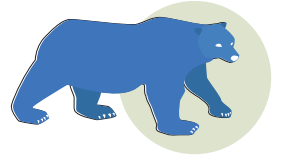
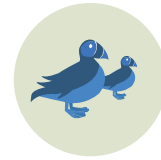
ARCTIC ECOSYSTEM

2) Recreate a portion of the Arctic food web:

a) Write the names of the animals in the right place:

Polar bear - krill -
copepods - arctic
fox - clams - arctic
cod - seal - arctic tern
phytoplankton

b) Draw the arrows
linking the elements of
the Arctic food web



MULTIPLE CHOICE

3) Which of the following
sequences represents a food
chain? Circle the correct
response.

A) SEAL ————— WALRUS ————— SEA LION

B) COPEPODS ———— KRILL
——— ARCTIC COD
——— WHALE

C) SMALL FISH ——— SEAL ————— POLAR BEAR

