

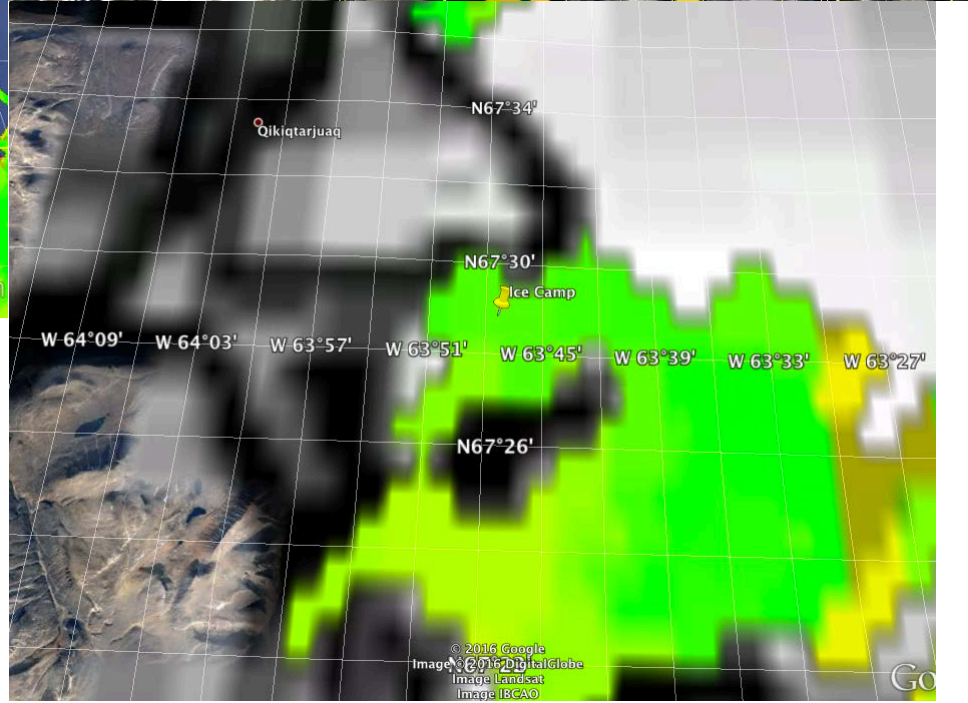
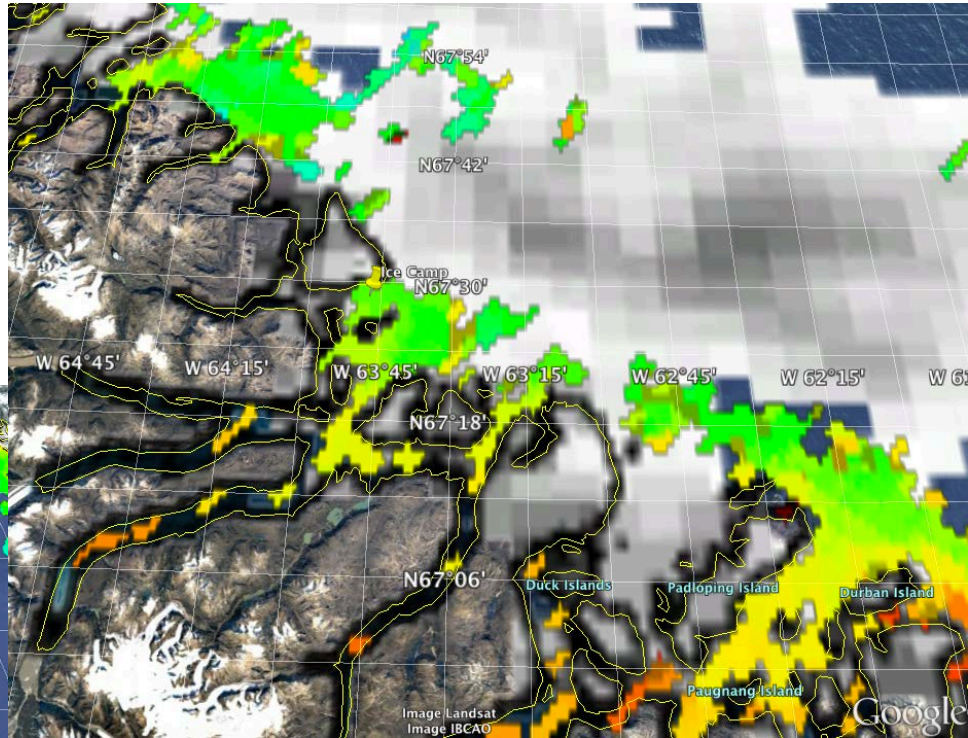
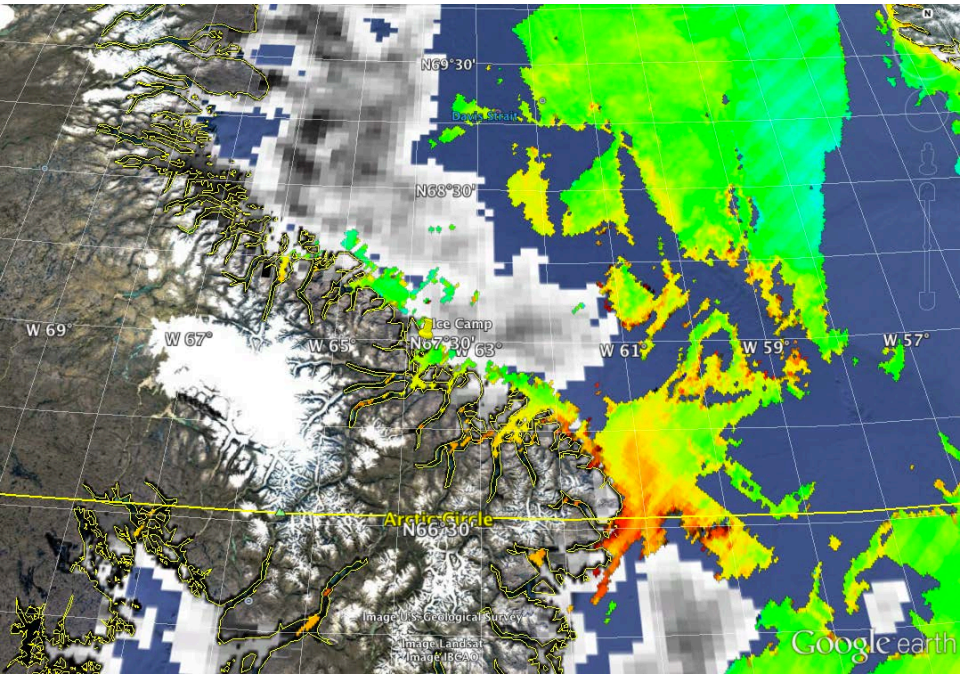
Green Edge Ice Camp

Comments

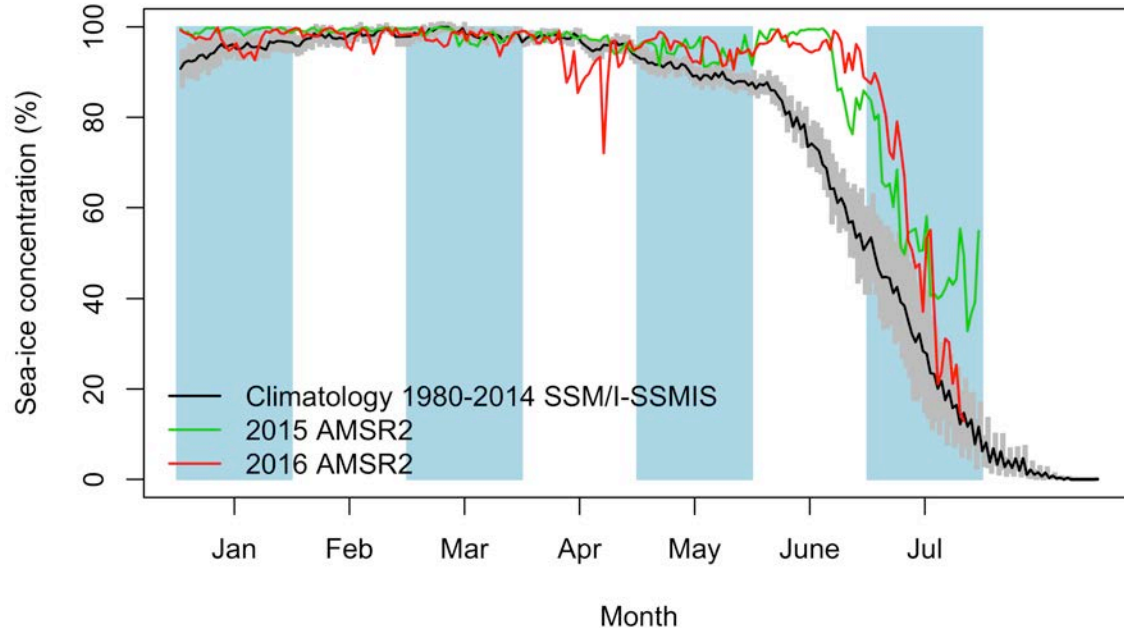
- Because yesterday was the last day of the ice camp, **today is the last satellite images report** for the Green Edge ice camp 2016.
- There is chlorophyll-a concentration data documented at the emplacement where the ice camp was on the AMSR2 sea ice concentration and MODIS chlorophyll-a concentration zoom image. The chlorophyll-a concentration decreases from the river mouth to the emplacement where the ice camp was.

July 26th

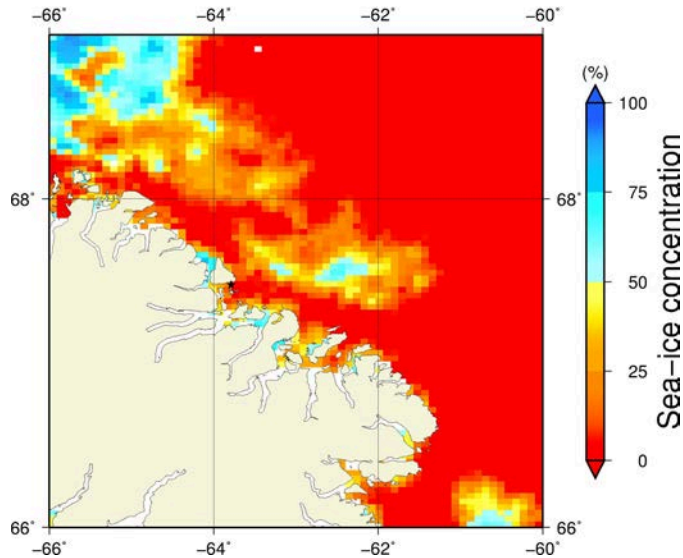
AMSR2 sea-ice concentration and MODIS chlorophyll-a concentration



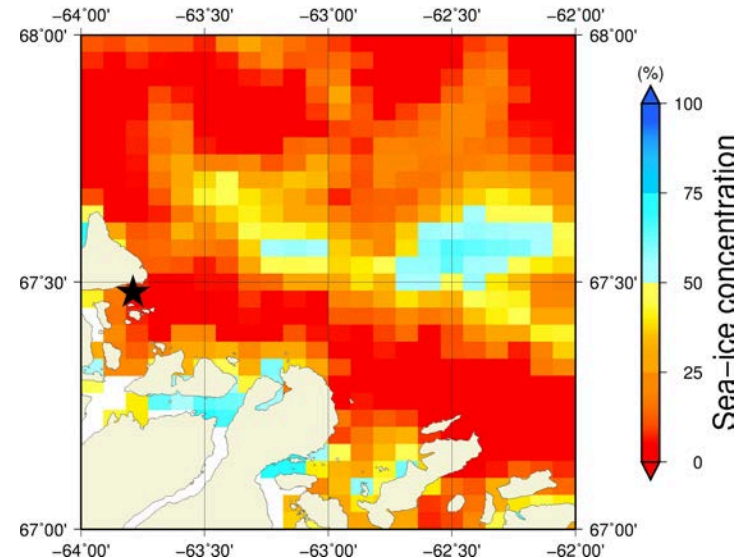
July 26th (AMSR2) Sea-ice concentration in the region 66° to 69°N and -66° to -60°E



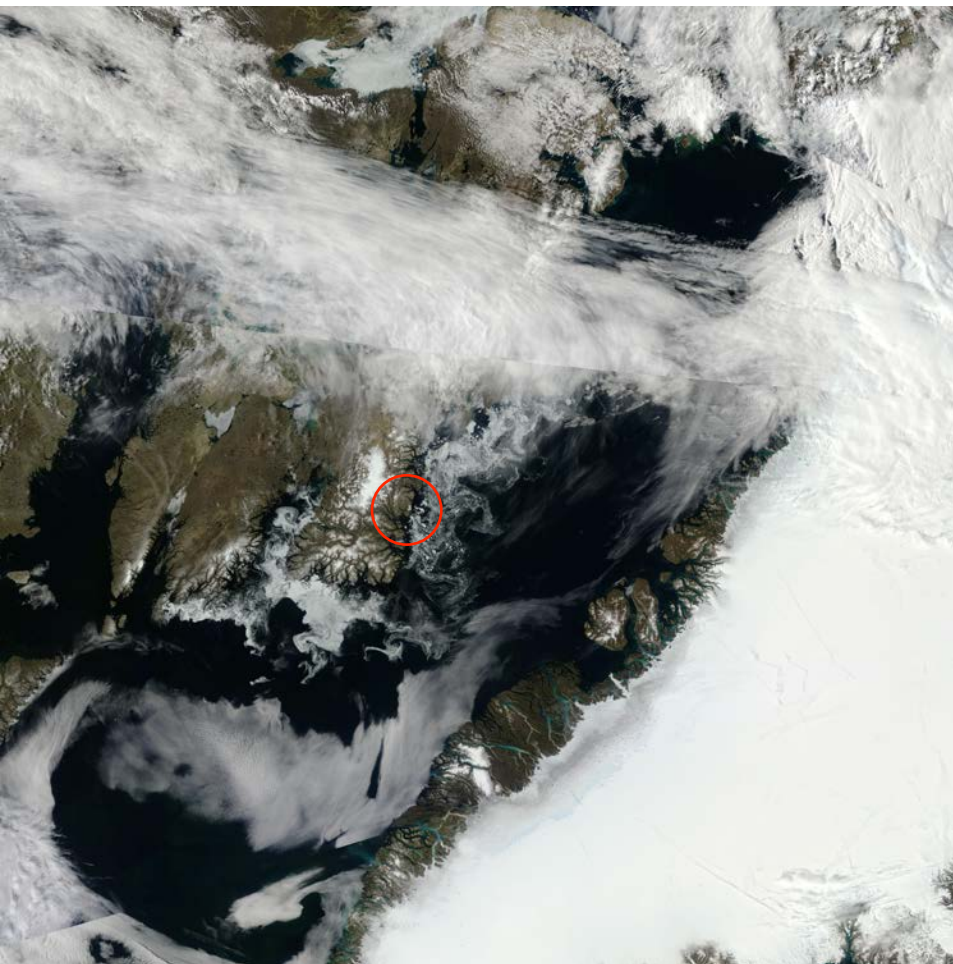
Overview

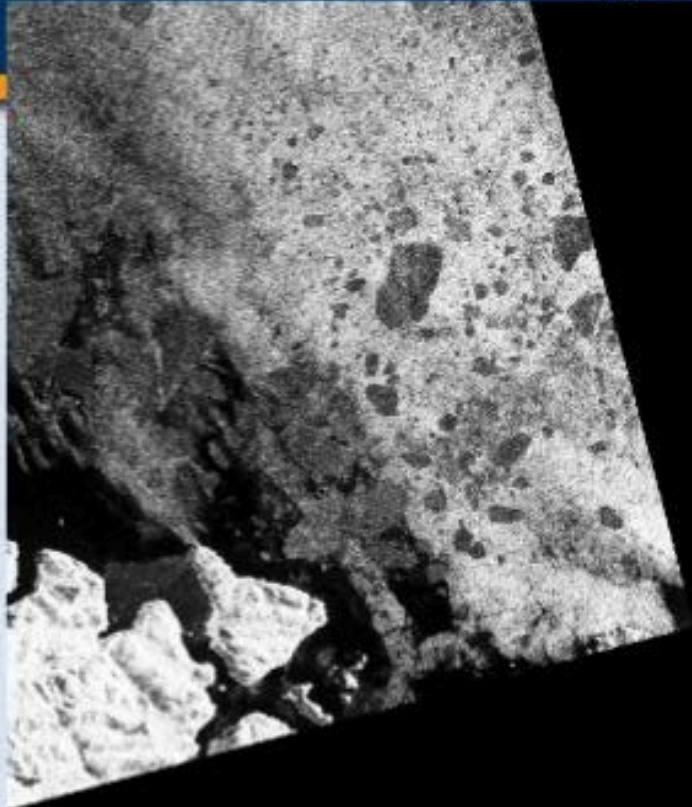


Zoom



July 26th (MODIS)





Legend / ᖃᓂᓕᓴᓂᓴ

- Floe Edge / ᓴᓂᖃᓴ
-  Moving Ice Open Water / ᓴᓂ ᓂᓴᓴᓴᓴ ᓂᓴᓂᓴᓴᓴ
-  Land Fast Ice / ᓴᓴᓴ
- 30 year average / 30 ᓴᓴᓴ ᓂᓴᓴᓴ ᓴᓴᓴᓴᓴᓴ