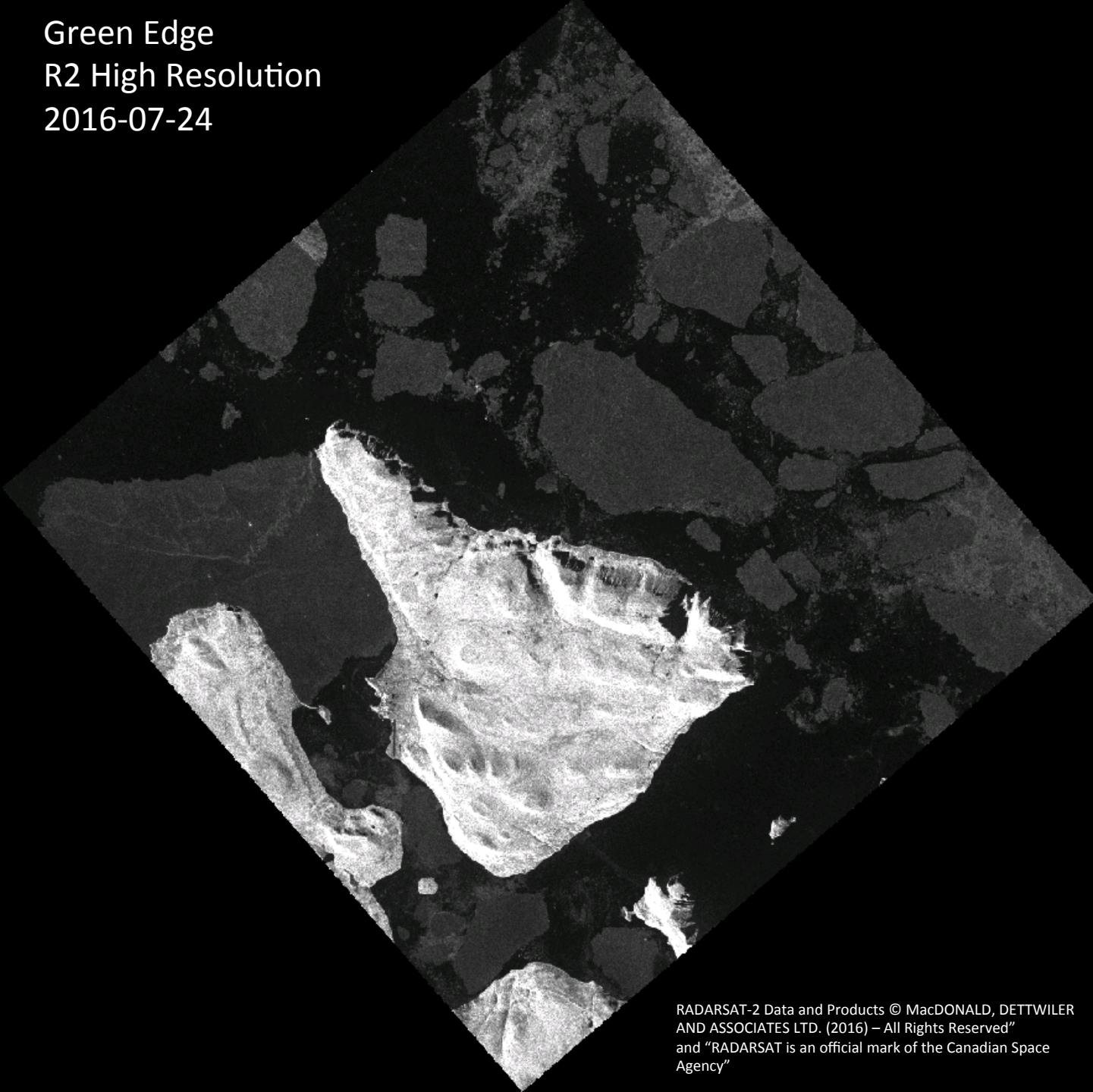


# Green Edge Ice Camp

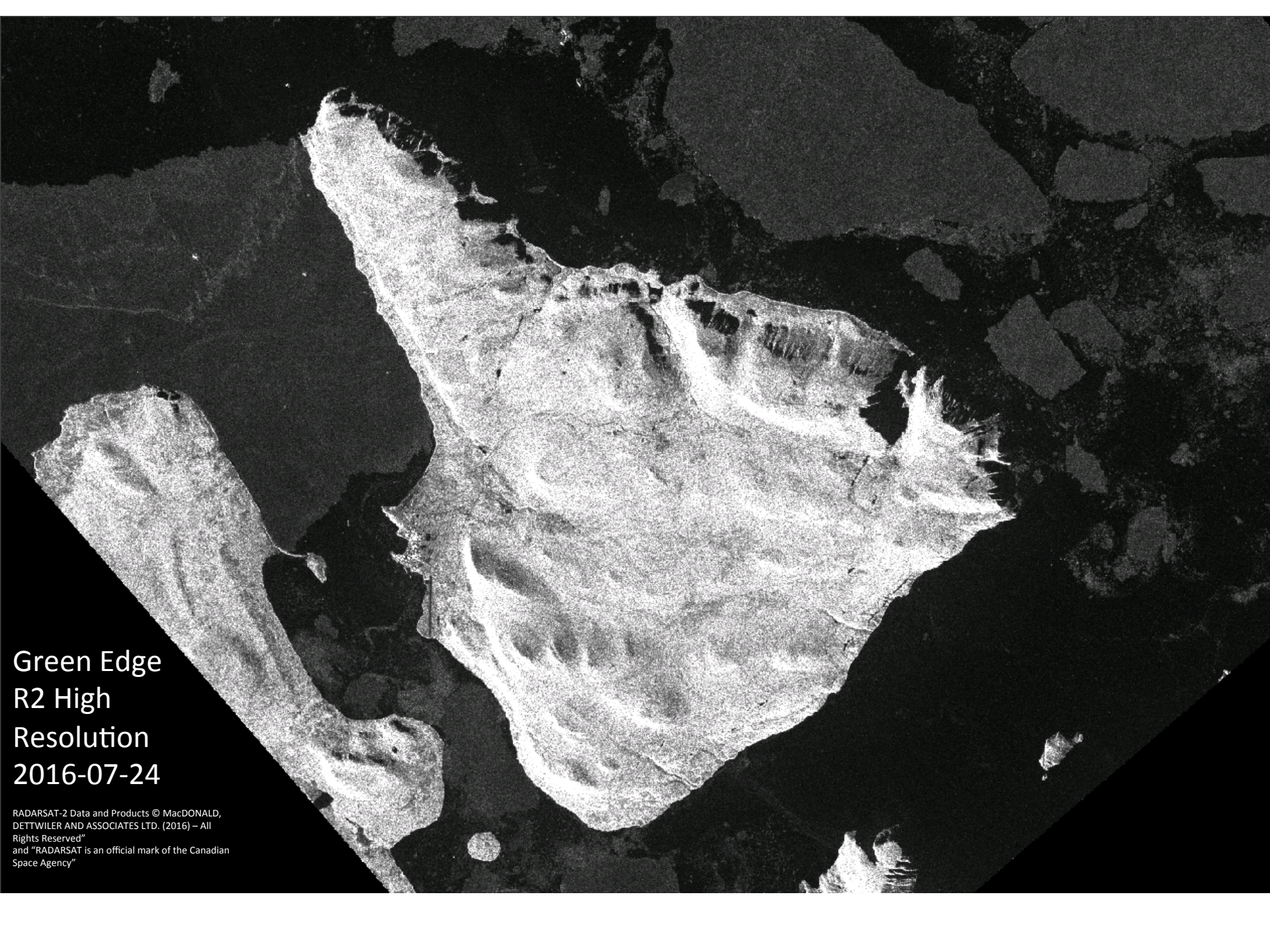
# Comments

- There are many different sea ice images today. We have two RADARSAT-2 high-resolution images thanks to Henry Jupe from the Canadian Ice Service. I added a third image indicating where the ice camp was. There are AMSR2, MODIS, Landsat and Sentinel-1 images too.
- We see on the RADARSAT-2 images, on the zoom MODIS image and on the Landsat zoom image that the land-fast ice broke in many floes.

Green Edge  
R2 High Resolution  
2016-07-24



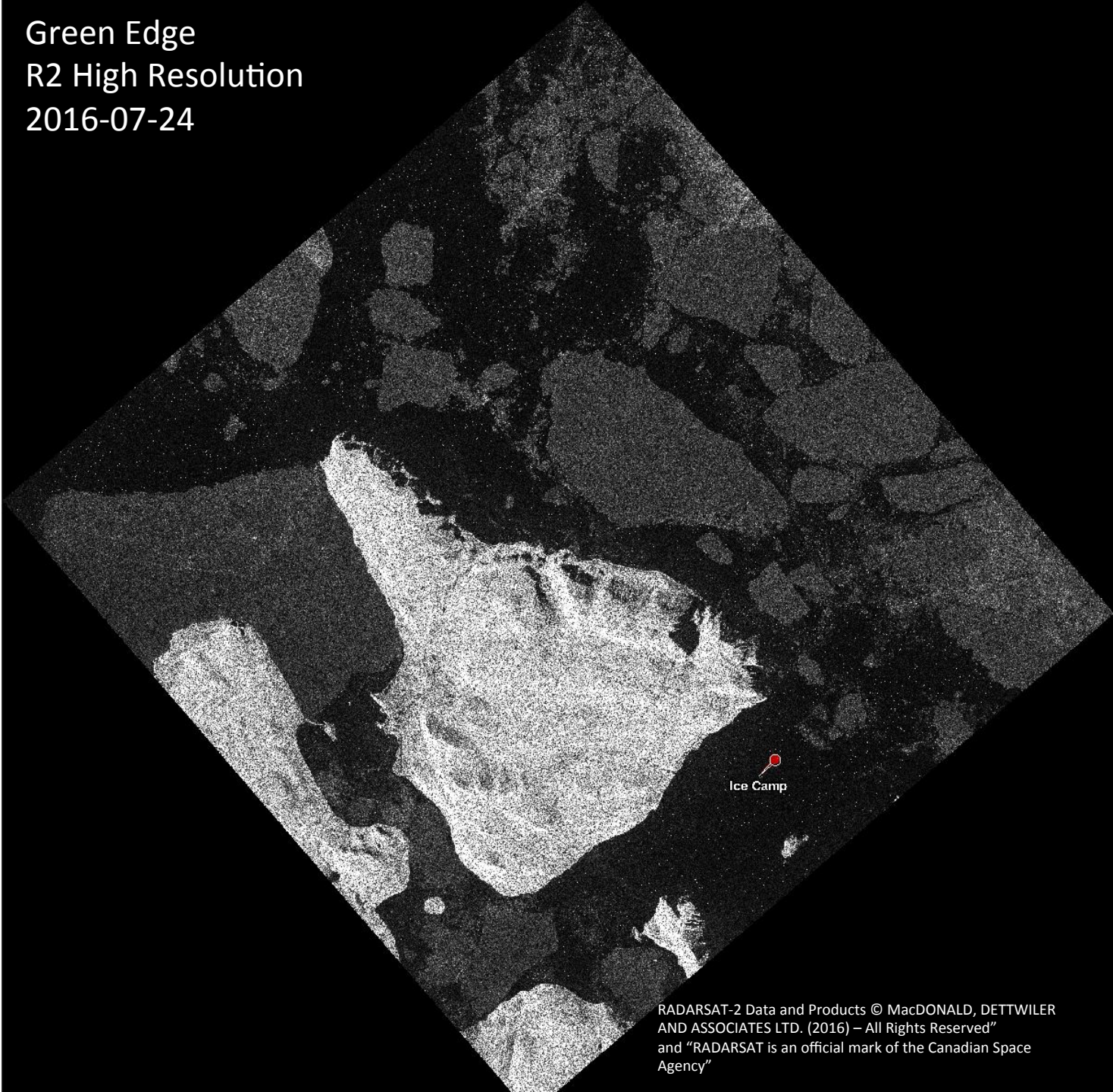
RADARSAT-2 Data and Products © MacDONALD, DETTWILER  
AND ASSOCIATES LTD. (2016) – All Rights Reserved”  
and “RADARSAT is an official mark of the Canadian Space  
Agency”



Green Edge  
R2 High  
Resolution  
2016-07-24

RADARSAT-2 Data and Products © MacDONALD,  
DETTWILER AND ASSOCIATES LTD. (2016) – All  
Rights Reserved”  
and “RADARSAT is an official mark of the Canadian  
Space Agency”

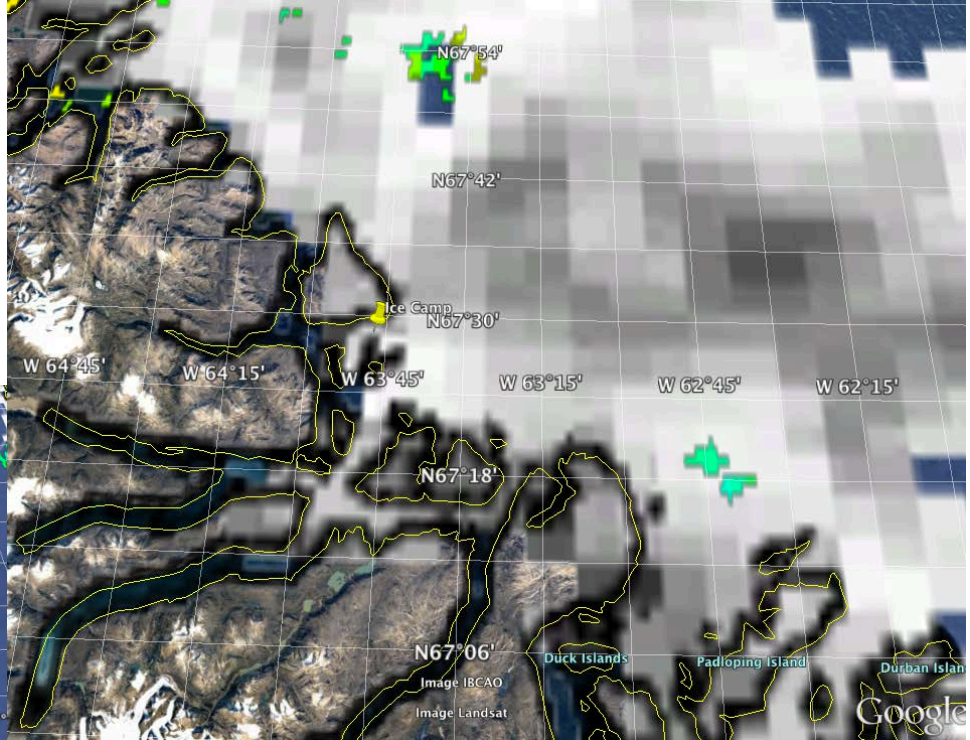
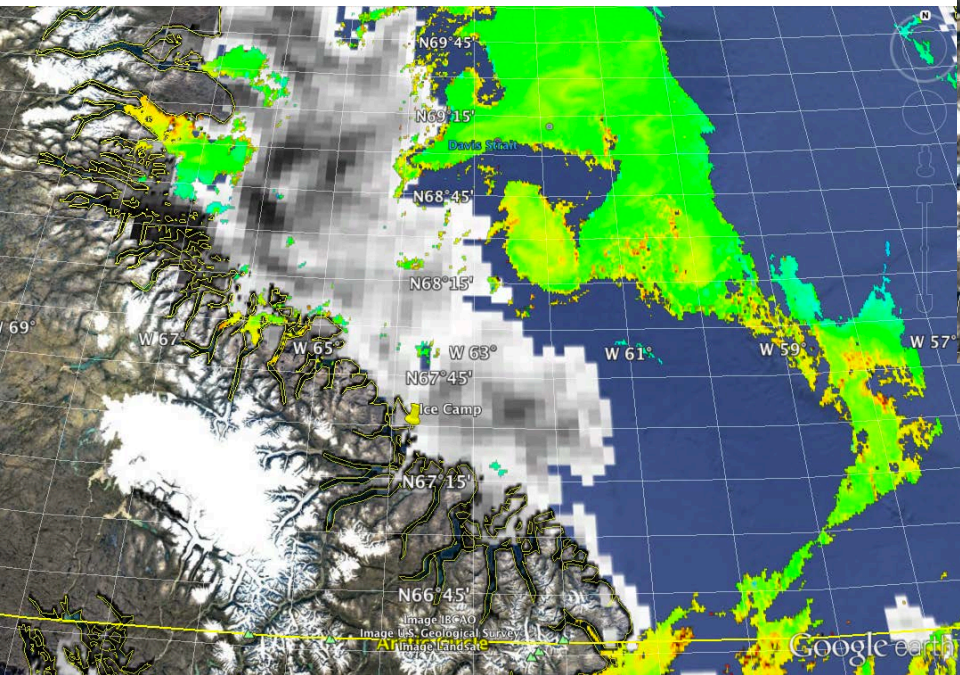
Green Edge  
R2 High Resolution  
2016-07-24



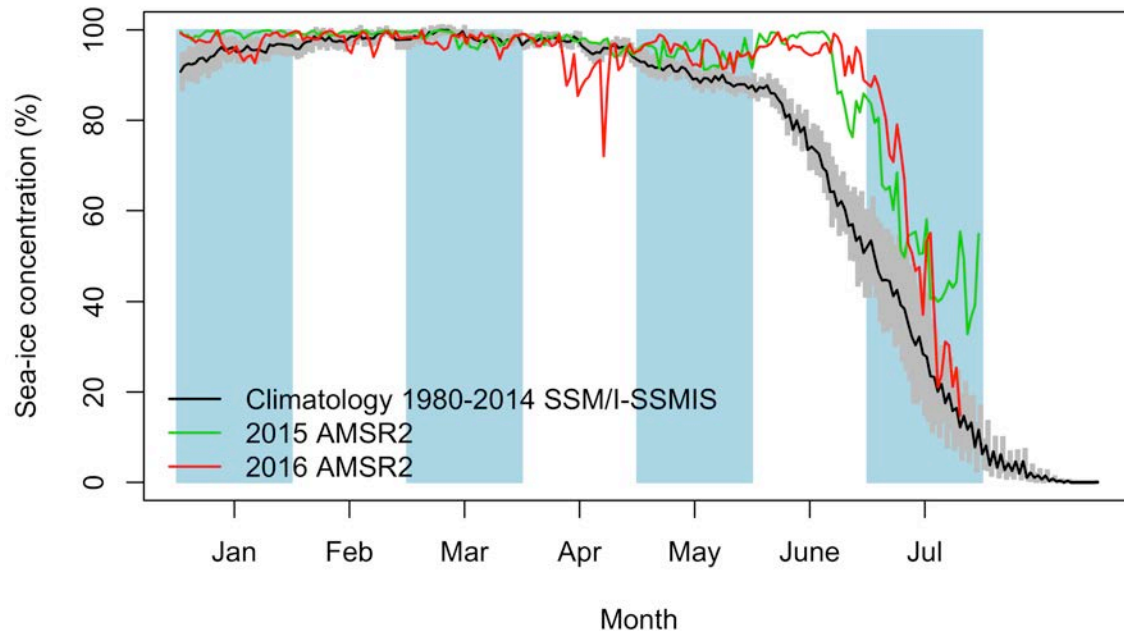
RADARSAT-2 Data and Products © MacDONALD, DETTWILER  
AND ASSOCIATES LTD. (2016) – All Rights Reserved”  
and “RADARSAT is an official mark of the Canadian Space  
Agency”

July 25<sup>th</sup>

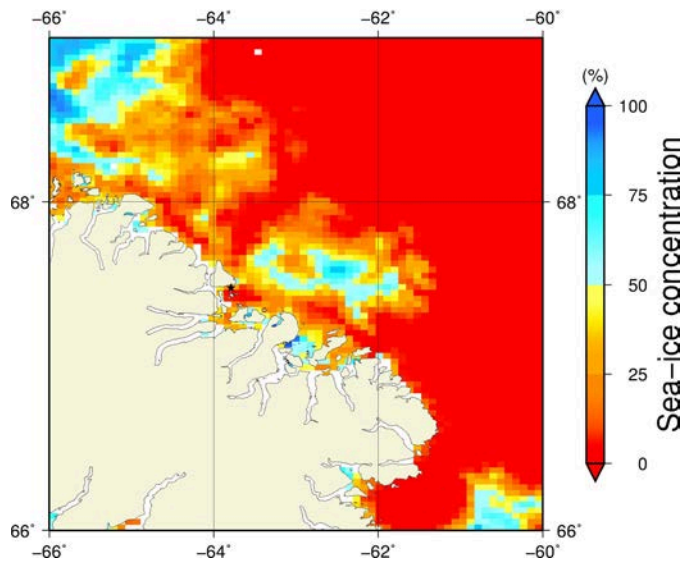
# AMSR2 sea-ice concentration and MODIS chlorophyll-a concentration



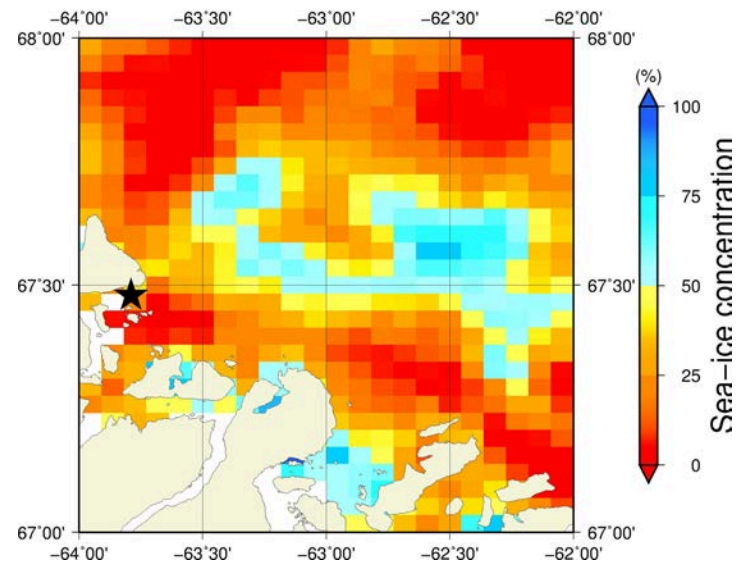
# July 25<sup>th</sup> (AMSR2) Sea - ice concentration in the region 66° to 69°N and -66° to -60°E



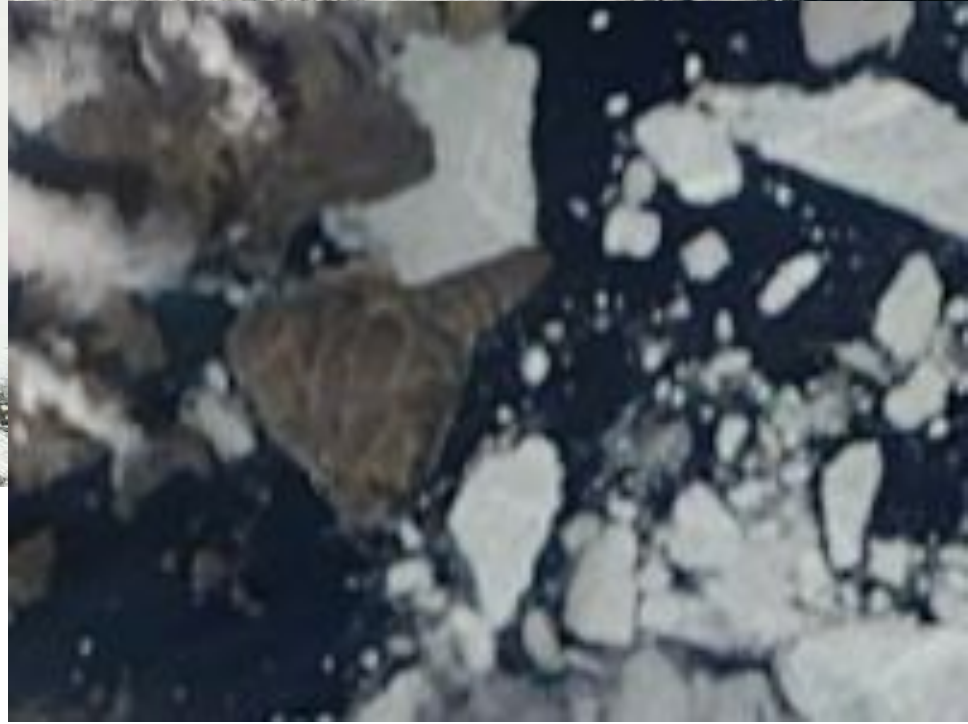
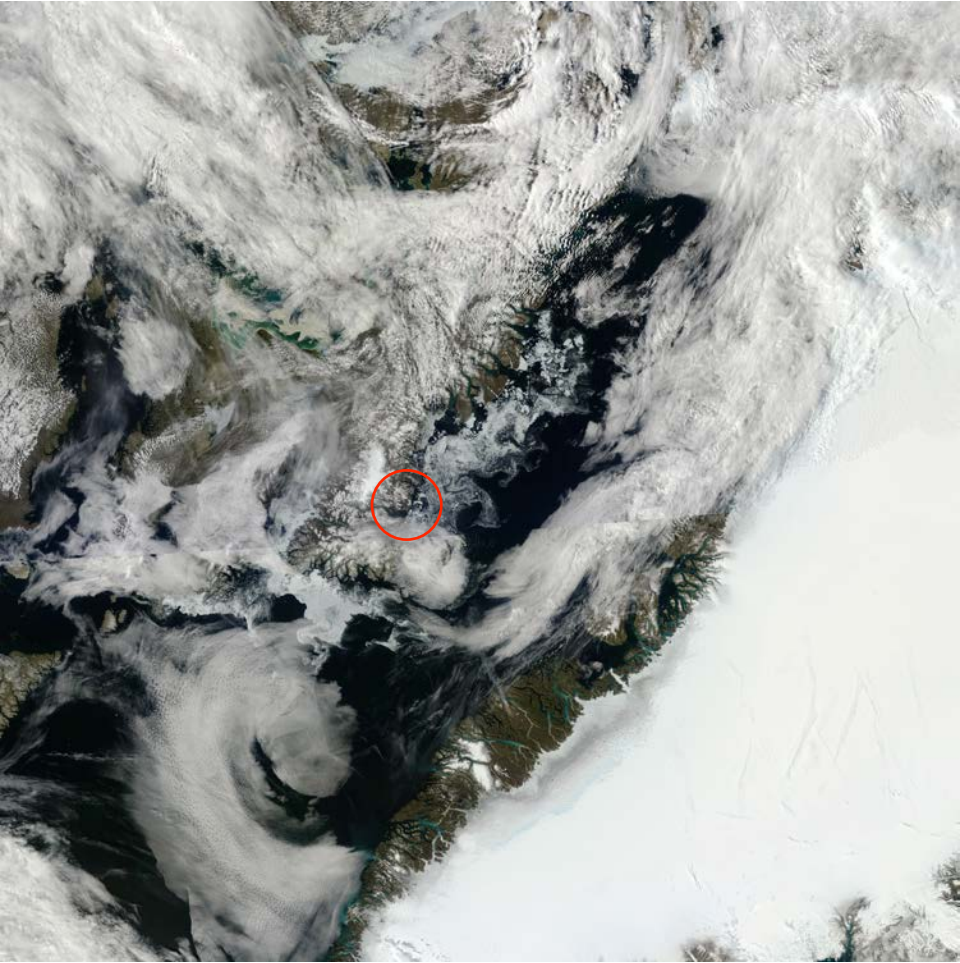
**Overview**



**Zoom**

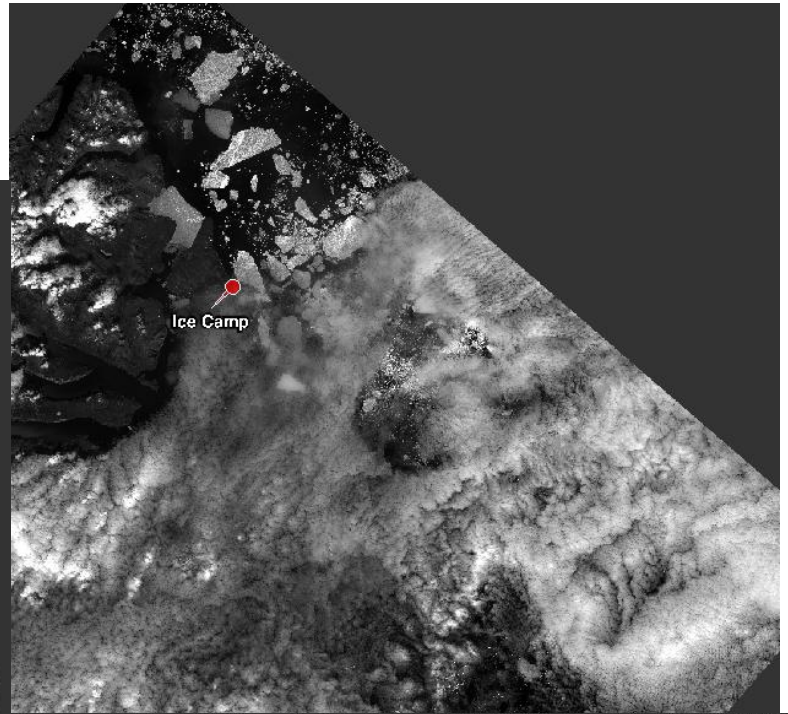
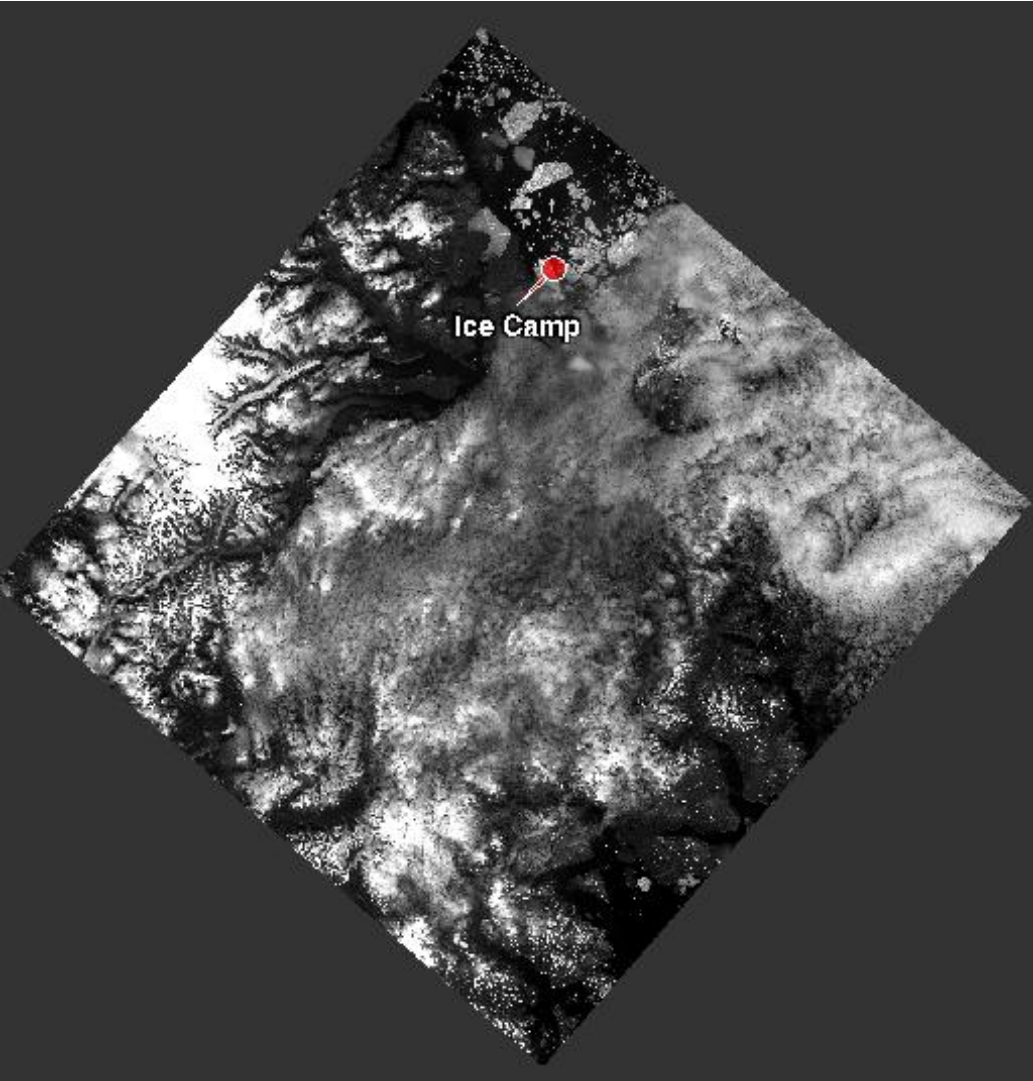


July 25<sup>th</sup> (MODIS)





July 25<sup>th</sup> (Landsat)



July 25<sup>th</sup> (Sentinel-1)

