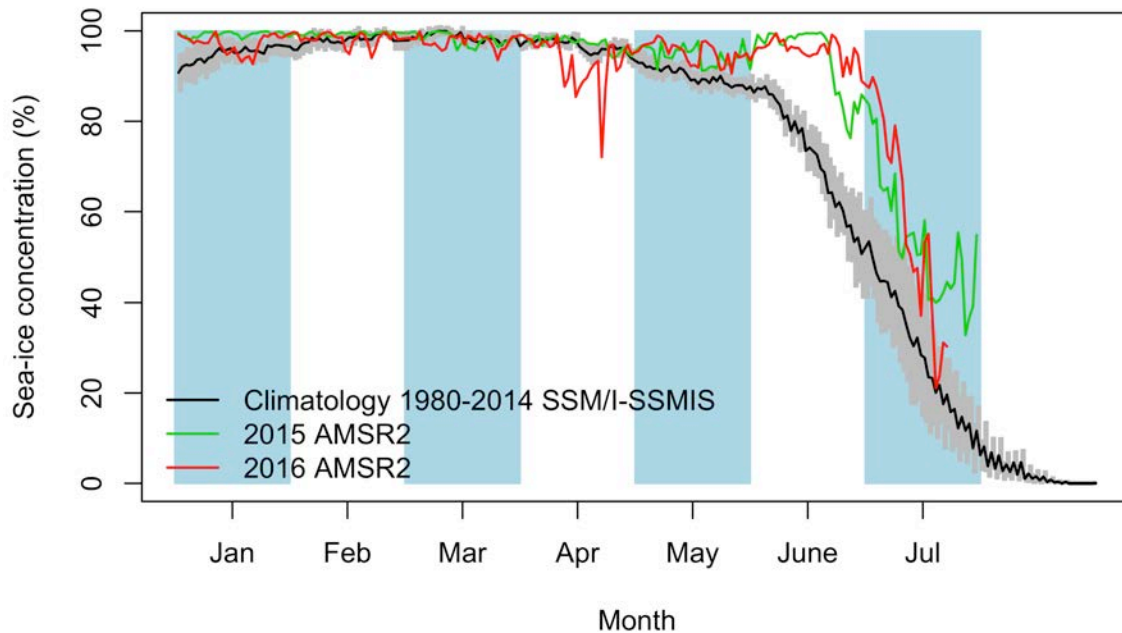


Green Edge Ice Camp

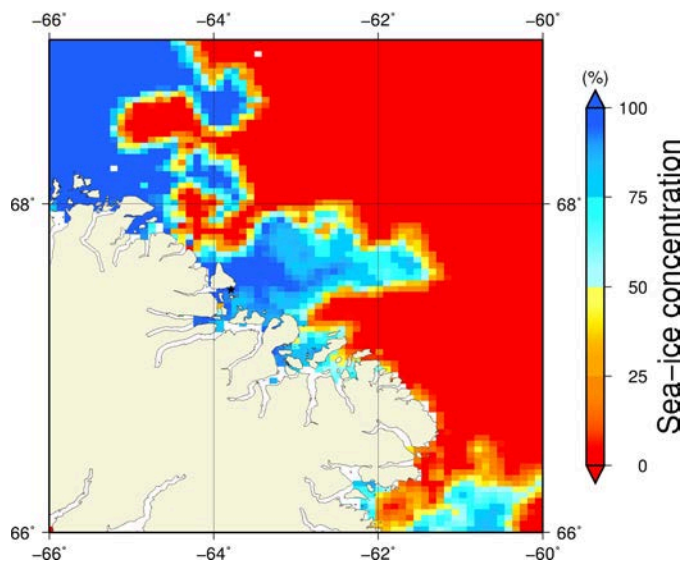
Comments

- There are two marginal ice zones near the emplacement of the ice camp that was dismantled. The marginal ice zone at Cape Dyer is at a distance of 108.2 km. This distance decreased from 110.4 km (July 17th) to 108.4 km (July 21st) to 108.2 km (July 22nd).
- The marginal ice zone in the middle of Davis Strait is at a distance of 80.1 km. This distance decreased from 294.0 km (May 5th) to 287.3 km (May 10th) to 248.4 km (May 17th) to 245.1 km (May 18th) to 252.3 km (May 22nd) to 233.4 km (May 29th) to 232.2 km (June 10th) to 235.4 km (June 15th) to 240.7 km (June 27th) to 188.9 km (July 4th) to 108.2 km (July 9th) to 162.2 km (July 15th) to 98.0 km (July 16th) to 113.6 km (July 17th) to 92.3 km (July 21st) to 80.1 km (July 22nd).
- **The land-fast ice where the ice camp was is broken in many floes.** The emplacement where the ice camp was is not on land-fast ice anymore.

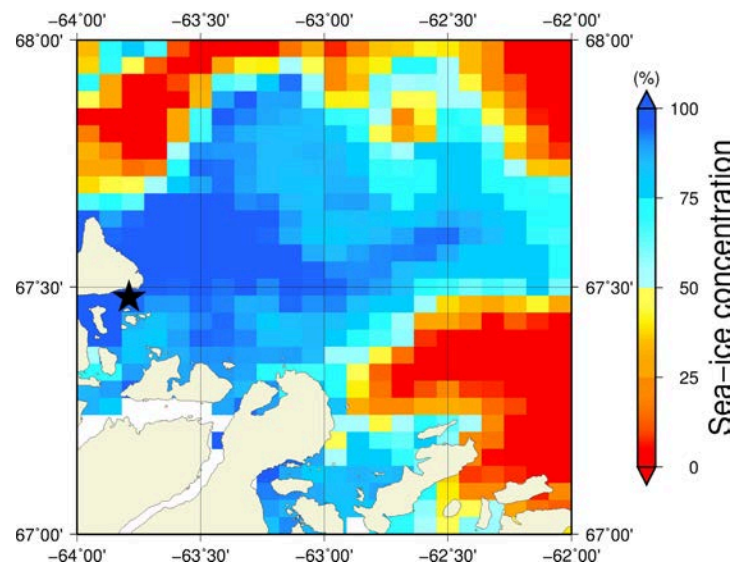
July 22nd (AMSR2) Sea-ice concentration in the region 66° to 69°N and -66° to -60°E



Overview



Zoom



July 22nd (MODIS)



July 22nd (Sentinel-1)

