

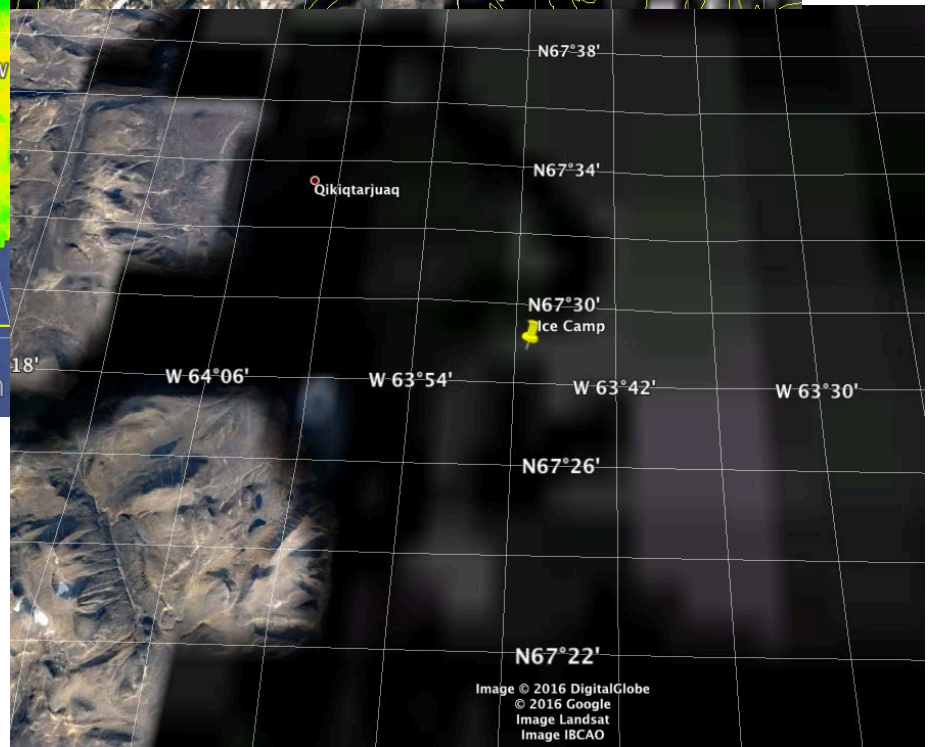
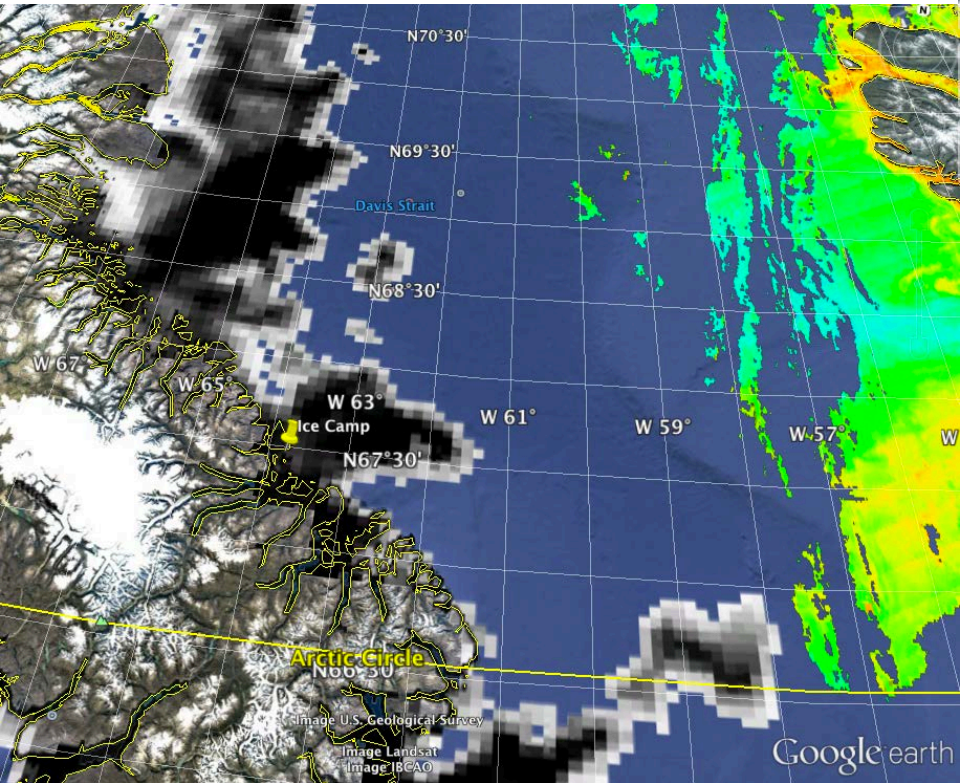
Green Edge Ice Camp

Comments

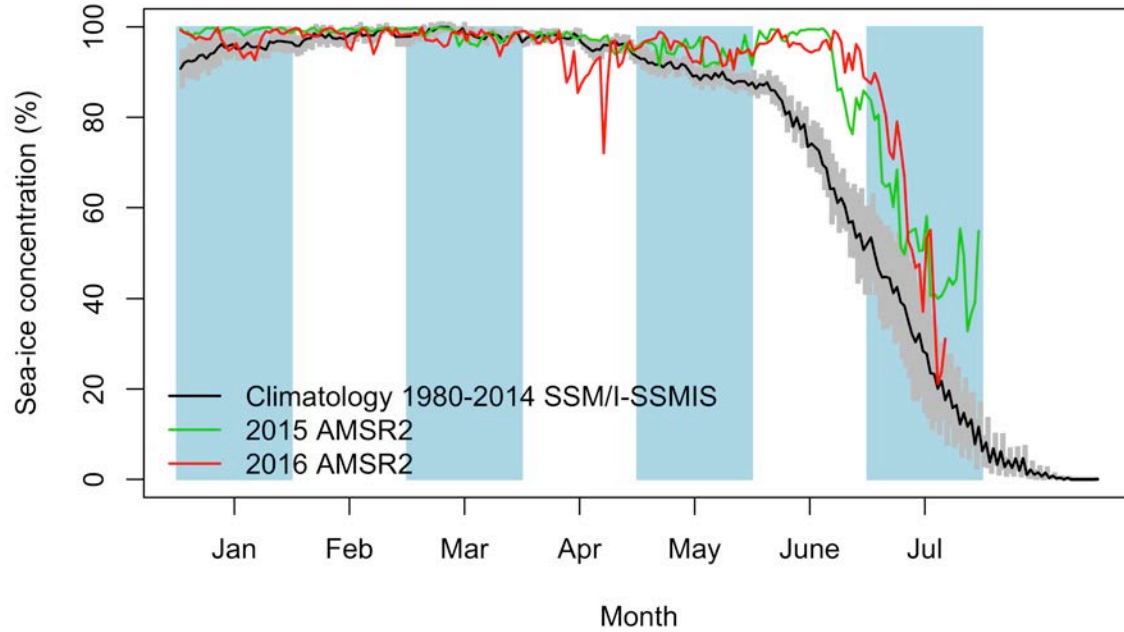
- There are two marginal ice zones near the emplacement of the ice camp that was dismantled. The marginal ice zone at Cape Dyer is at a distance of 108.4 km. It was at a distance of 110.4 km on July 17th.
- The marginal ice zone in the middle of Davis Strait is at a distance of 92.3 km. This distance decreased from 294.0 km (May 5th) to 287.3 km (May 10th) to 248.4 km (May 17th) to 245.1 km (May 18th) to 252.3 km (May 22nd) to 233.4 km (May 29th) to 232.2 km (June 10th) to 235.4 km (June 15th) to 240.7 km (June 27th) to 188.9 km (July 4th) to 108.2 km (July 9th) to 162.2 km (July 15th) to 98.0 km (July 16th) to 113.6 km (July 17th) to 92.3 km (July 21st).
- The land-fast ice edge is at a distance of 2.9 km. This distance was 3.6 km on July 15th and 3.4 km on July 16th.
- There is a large crack just before arriving at the emplacement of the dismantled ice camp from Qikiqtarjuaq.

July 21st

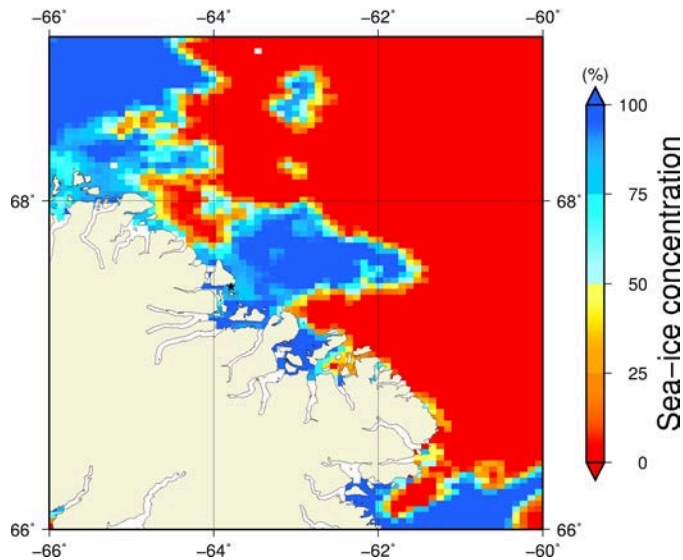
AMSR2 sea-ice concentration and MODIS chlorophyll-a concentration



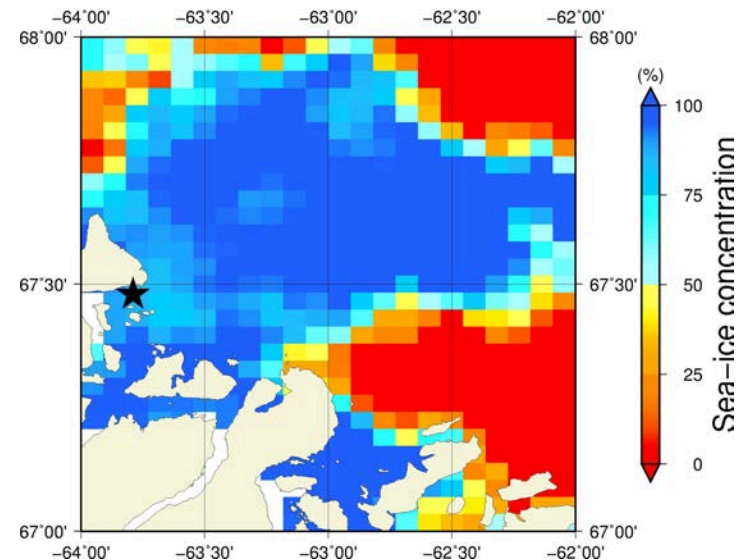
July 21st (AMSR2) Sea-ice concentration in the region 66° to 69°N and -66° to -60°E



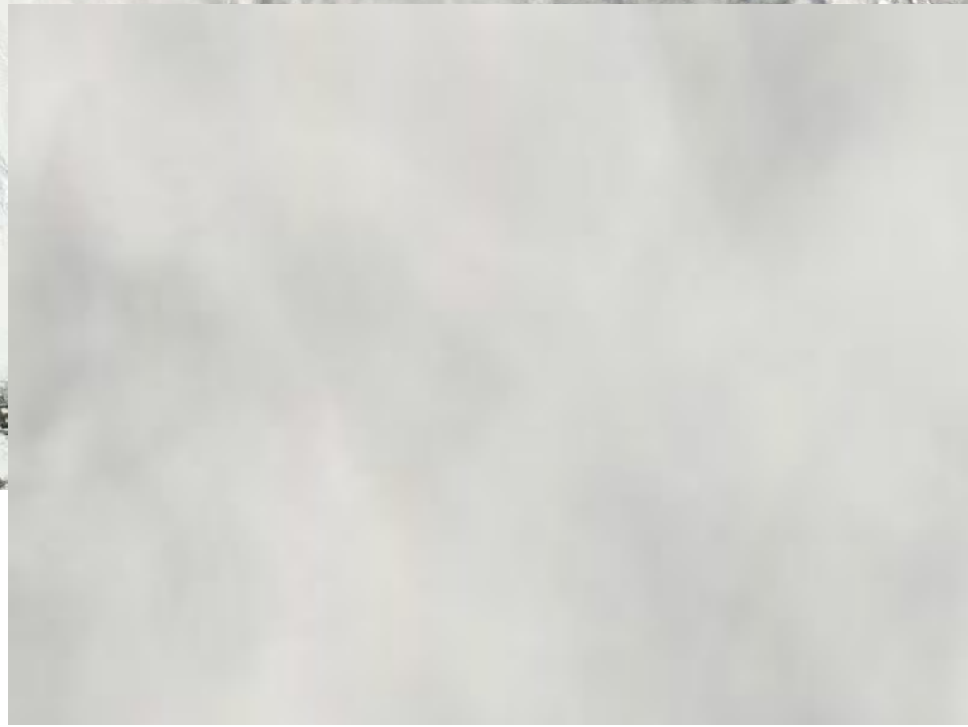
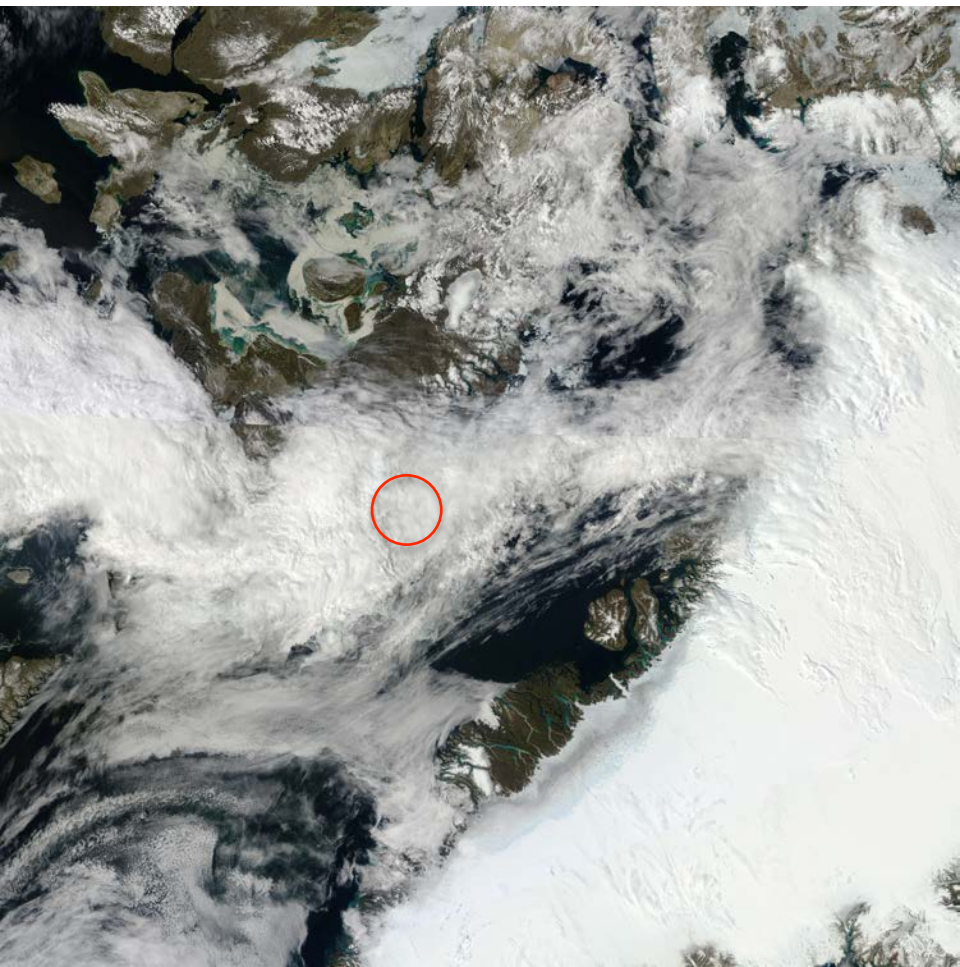
Overview



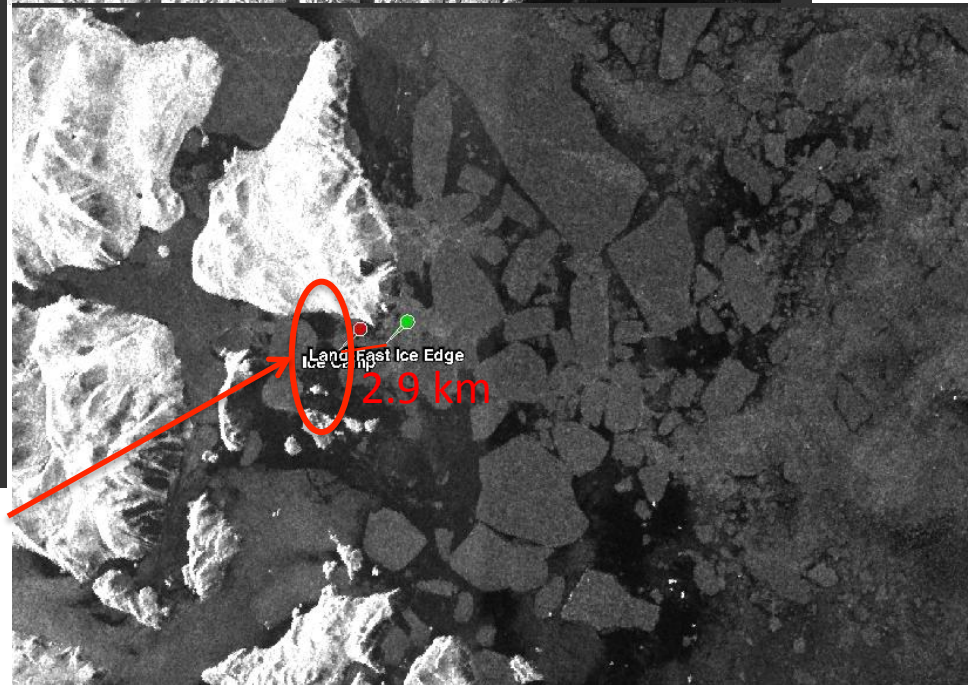
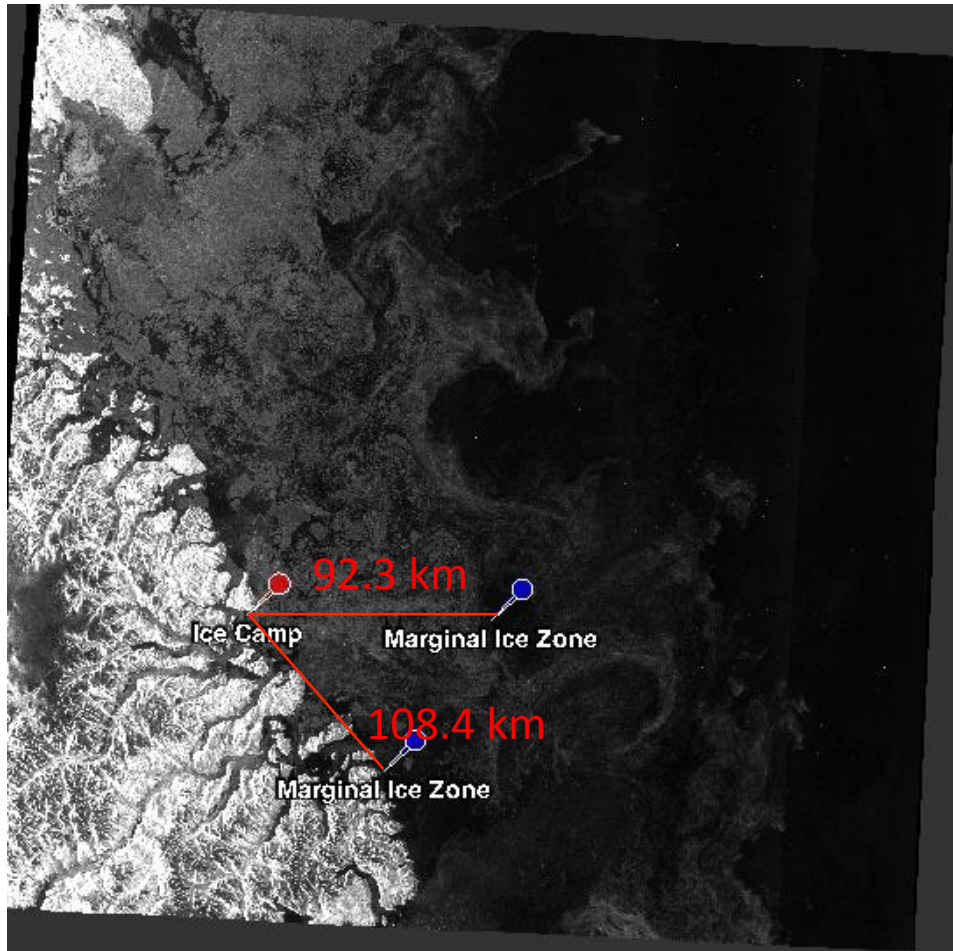
Zoom



July 21st (MODIS)



July 21st (Sentinel-1)



Crack