

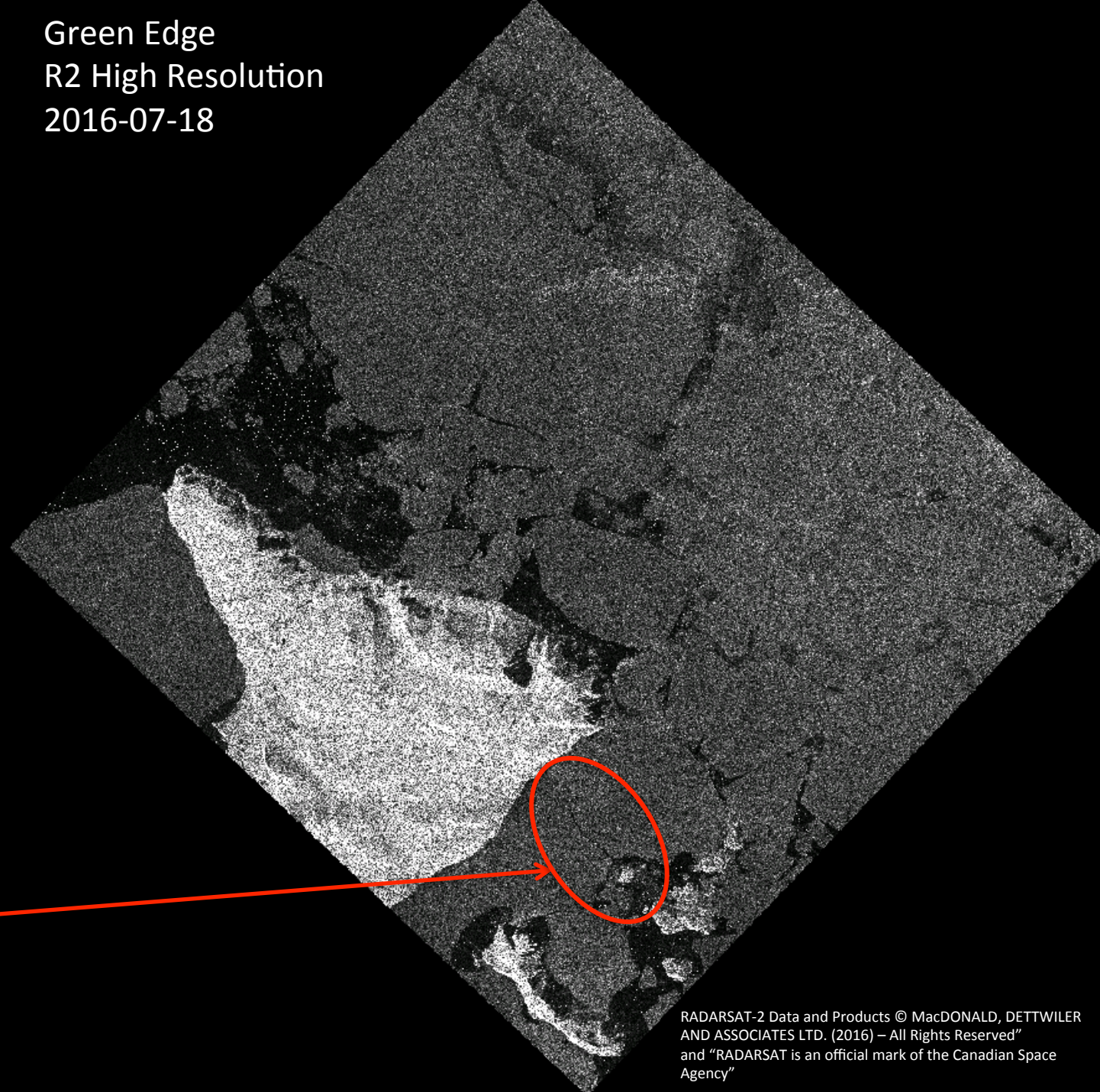
Green Edge Ice Camp

Comments

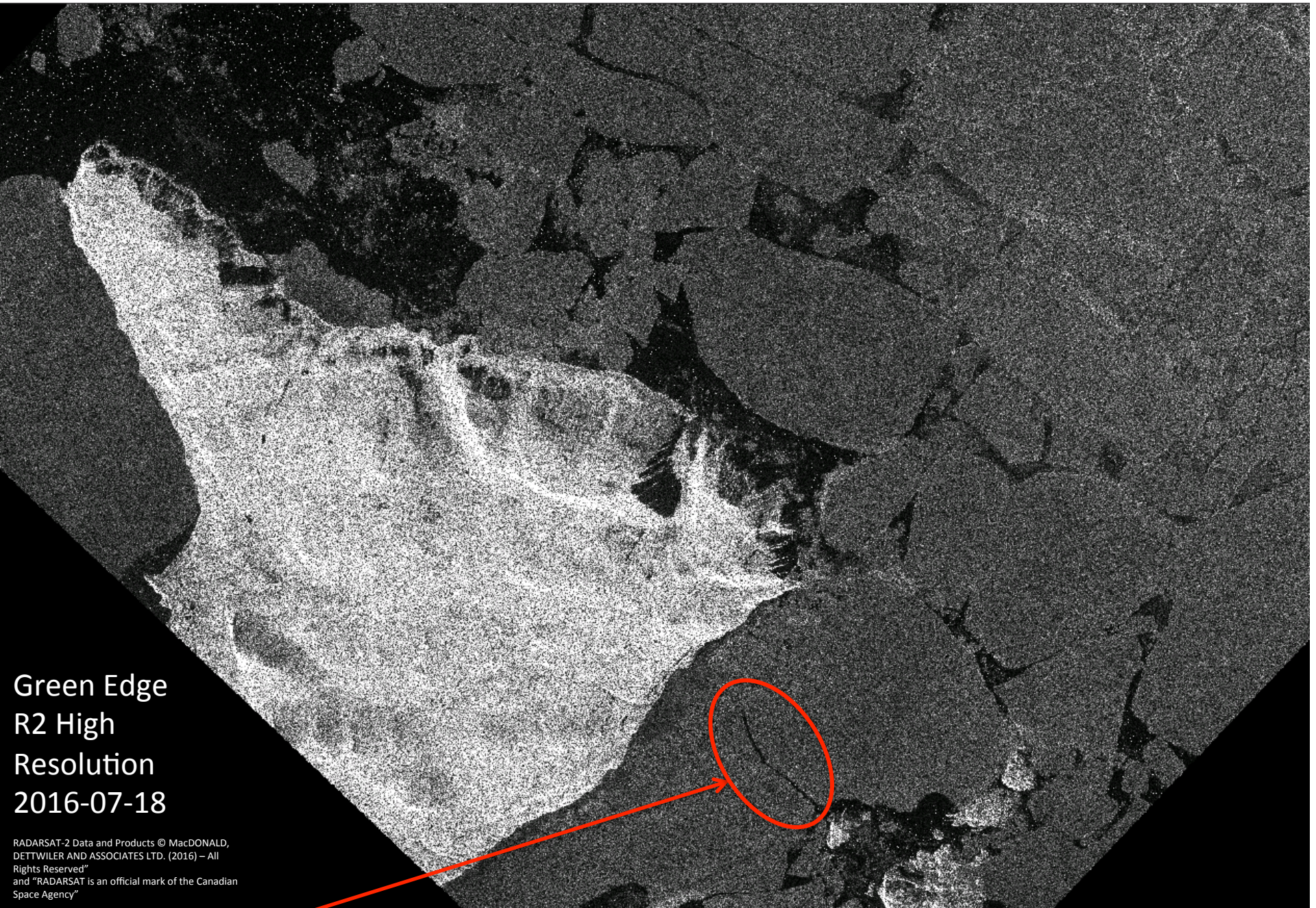
- We have two RADARSAT-2 high-resolution images thanks to Henry Jupe from the Canadian Ice Service. I added a third image indicating where the ice camp was. We see a crack just before.
- We can observe a bloom on the AMSR2 sea ice concentration and MODIS chlorophyll-a concentration zoom image at 67°24'13.71" N -63°42'48.23" E. One can open the files 20160719_sea_ice_baffin.kml (in the 20160719_sea_ice_baffin.zip archive) and A2016201160500_L2_LAC_OC.kmz on <https://goo.gl/SwM77o> in Google Earth to get the exact geolocation of the bloom. Note that a MacBook Pro with a graphic card NVIDIA GeForce GT 330M 512 MB is required to open A2016201160500_L2_LAC_OC.kmz in Google Earth. One user reported that the graphic card Intel HD Graphics 4000 512 MB graphics could not open the MODIS chlorophyll-a concentration files in Google Earth. If you have a 15-inch MacBook Pro, you probably have a graphic card NVIDIA GeForce GT 330M 512 MB. If you have a 13-inch MacBook Pro, you probably have an Intel HD Graphics 4000 512 MB graphics and you will not be able to open A2016201160500_L2_LAC_OC.kmz in the Google Earth installation on your system. The graphic card requirements are undetermined if you don't use a Mac.
- We observe a drastic fall in the sea ice concentration around Broughton Island on the AMSR2 plot and images.

Green Edge
R2 High Resolution
2016-07-18

Crack



RADARSAT-2 Data and Products © MacDONALD, DETTWILER
AND ASSOCIATES LTD. (2016) – All Rights Reserved”
and “RADARSAT is an official mark of the Canadian Space
Agency”

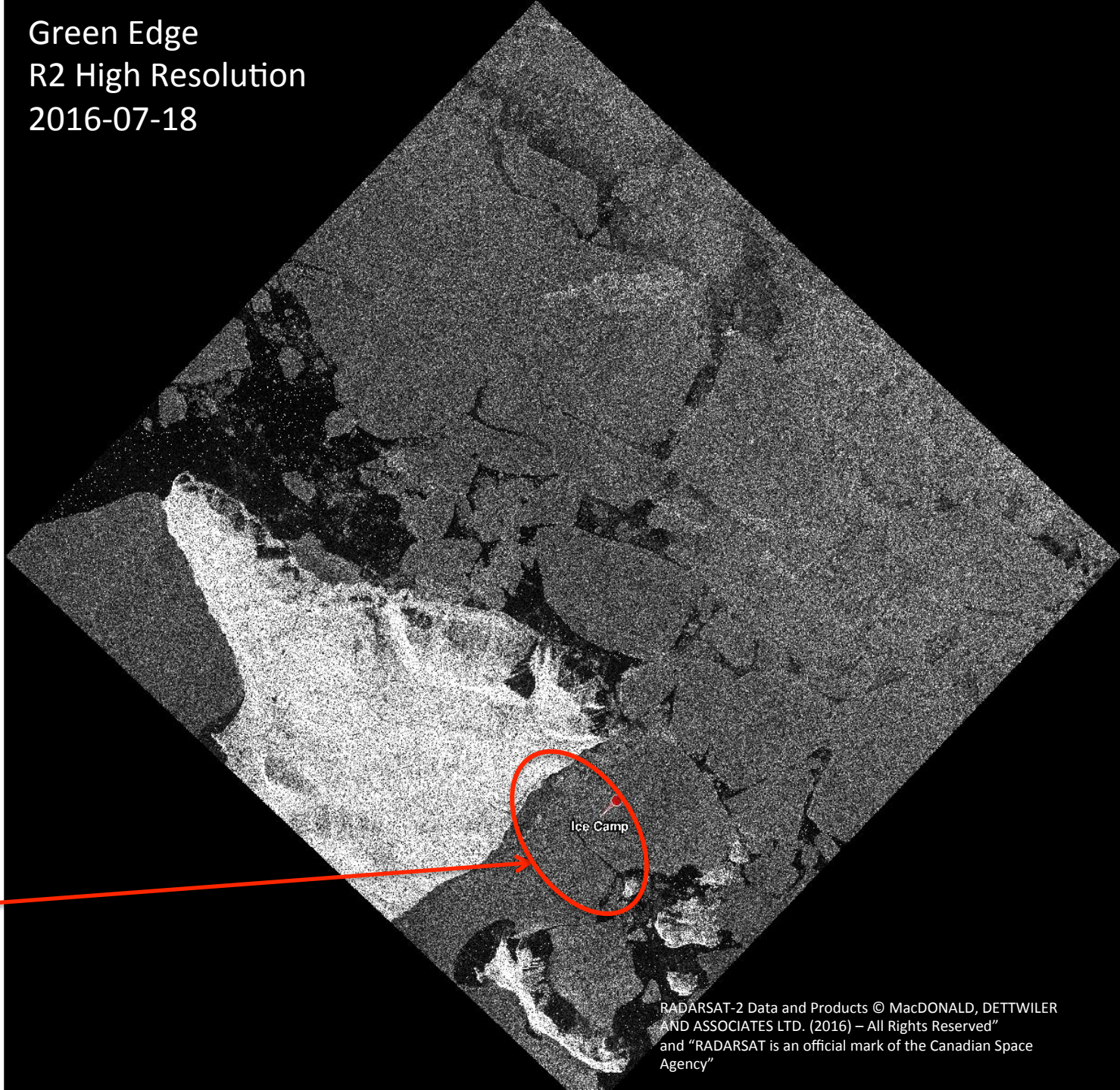


Green Edge
R2 High
Resolution
2016-07-18

RADARSAT-2 Data and Products © MacDONALD,
DETTWILER AND ASSOCIATES LTD. (2016) – All
Rights Reserved”
and “RADARSAT is an official mark of the Canadian
Space Agency”

Crack

Green Edge
R2 High Resolution
2016-07-18

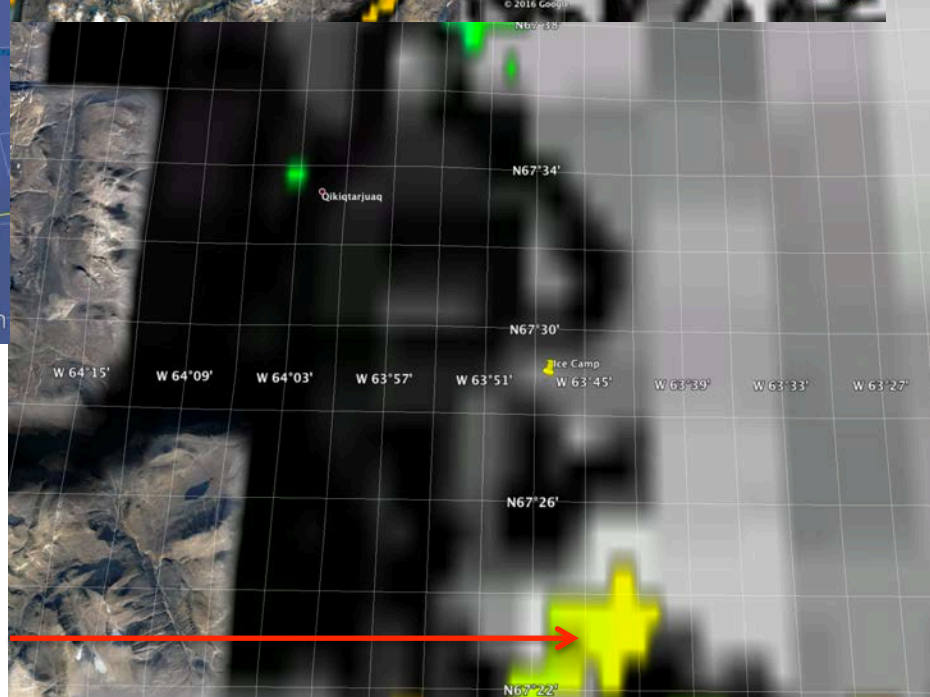
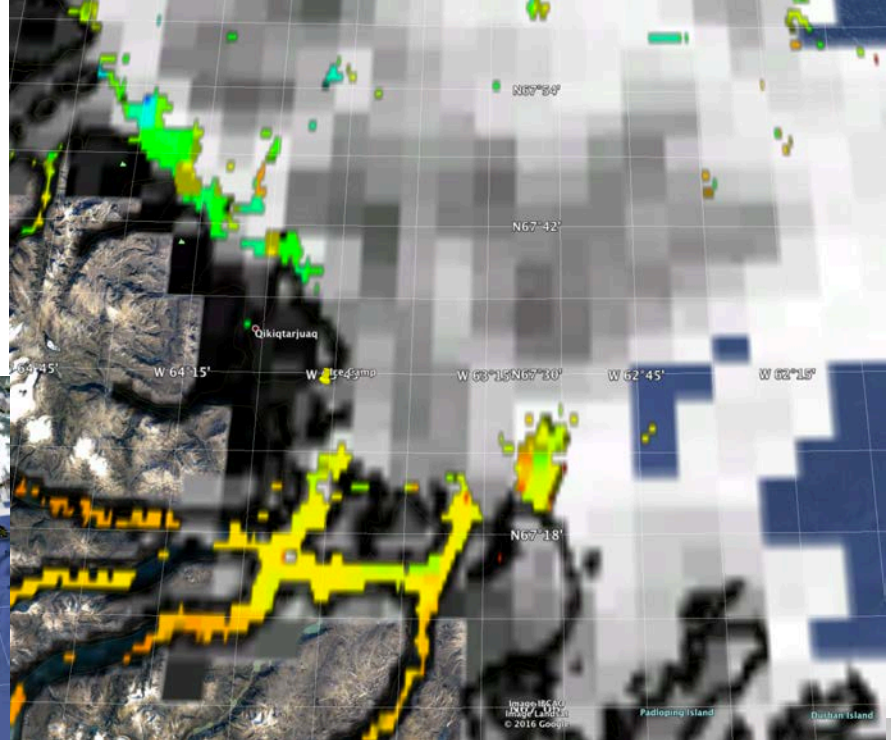
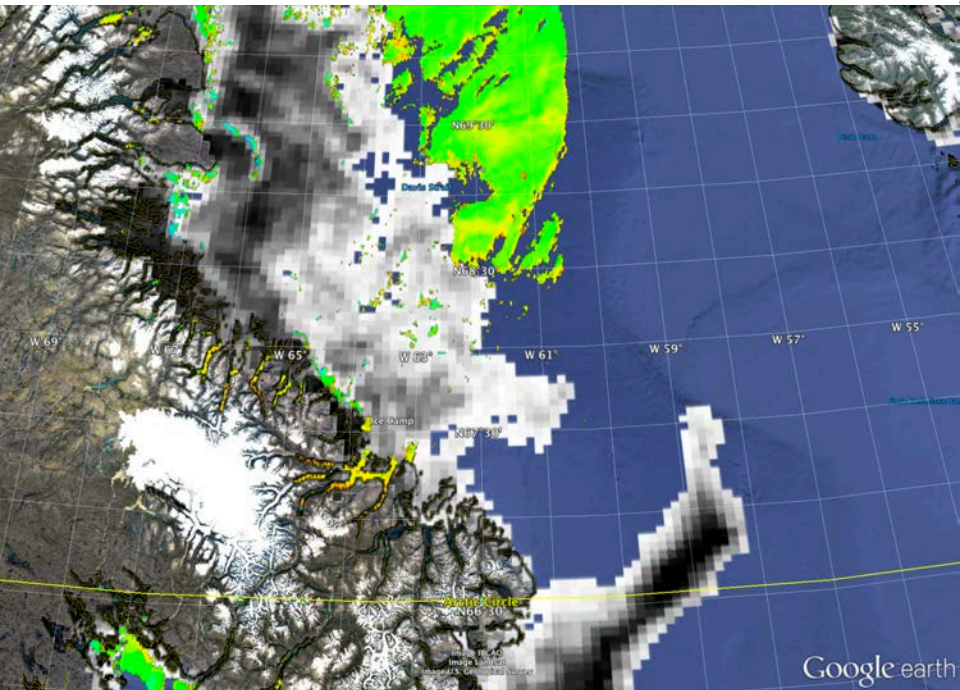


Ice Camp

RADARSAT-2 Data and Products © MacDONALD, DETTWILER
AND ASSOCIATES LTD. (2016) – All Rights Reserved”
and “RADARSAT is an official mark of the Canadian Space
Agency”

July 19th

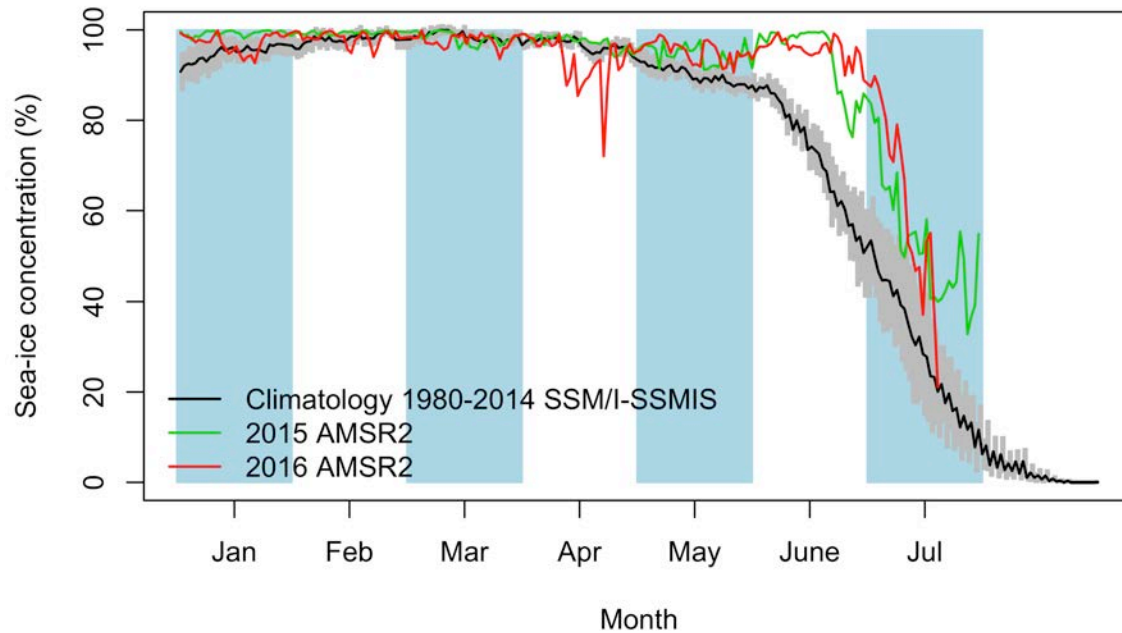
AMSR2 sea-ice concentration and MODIS chlorophyll-a concentration



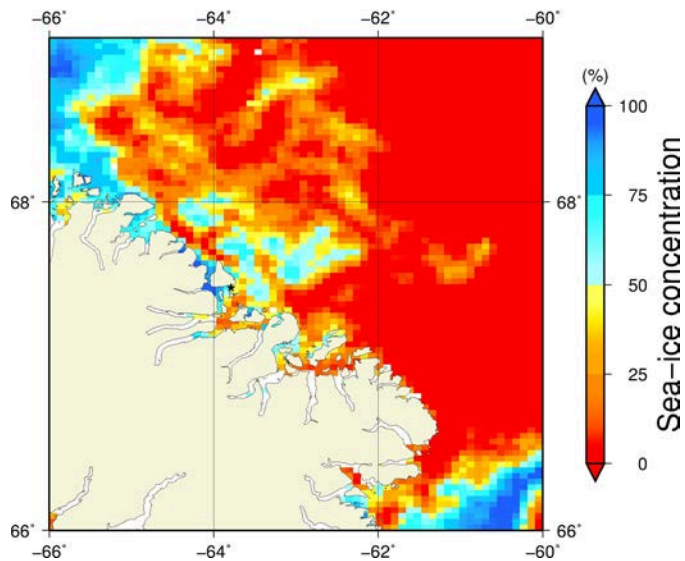
Bloom



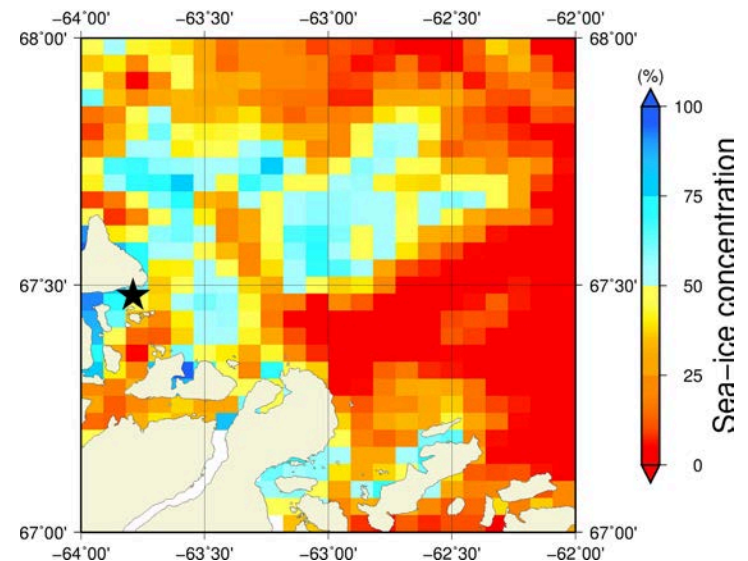
July 19th (AMSR2) Sea – ice concentration in the region 66° to 69°N and –66° to –60°E



Overview



Zoom



July 19th (MODIS)

