

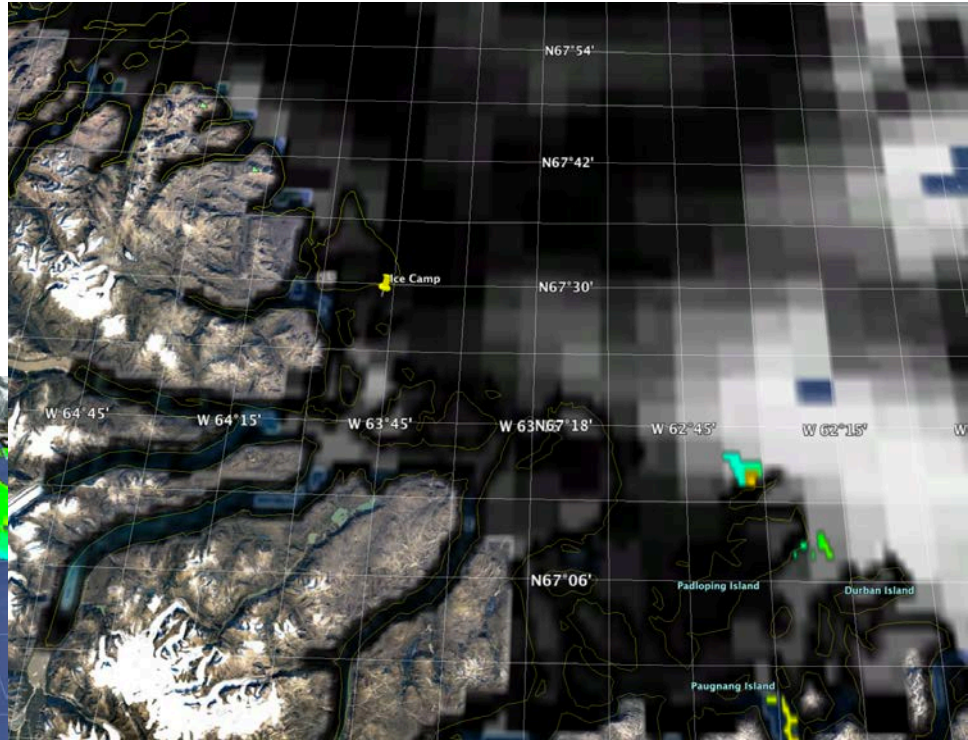
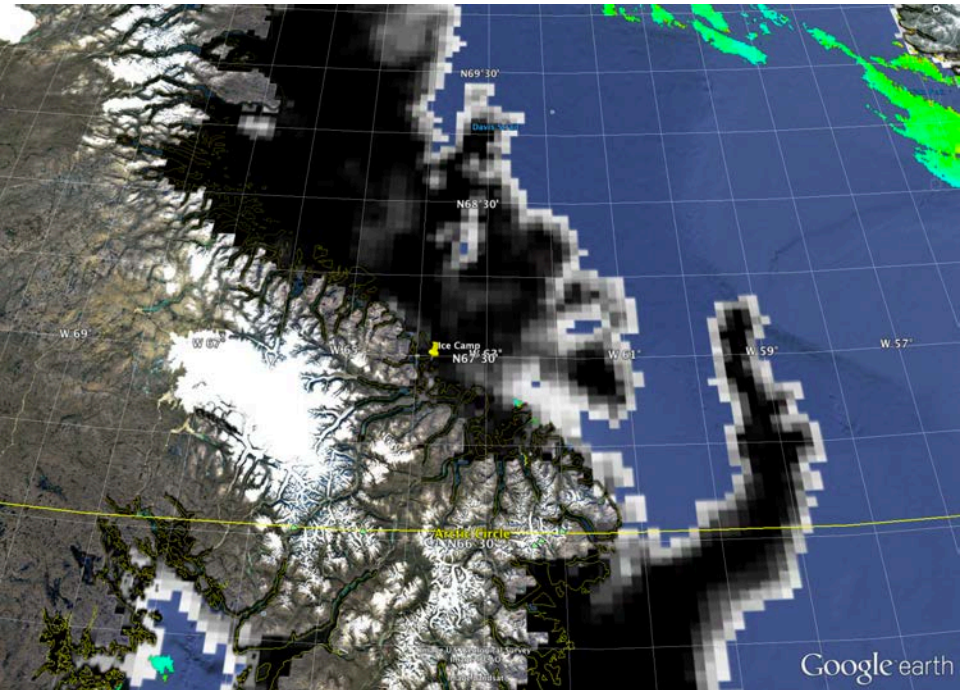
Green Edge Ice Camp

Comments

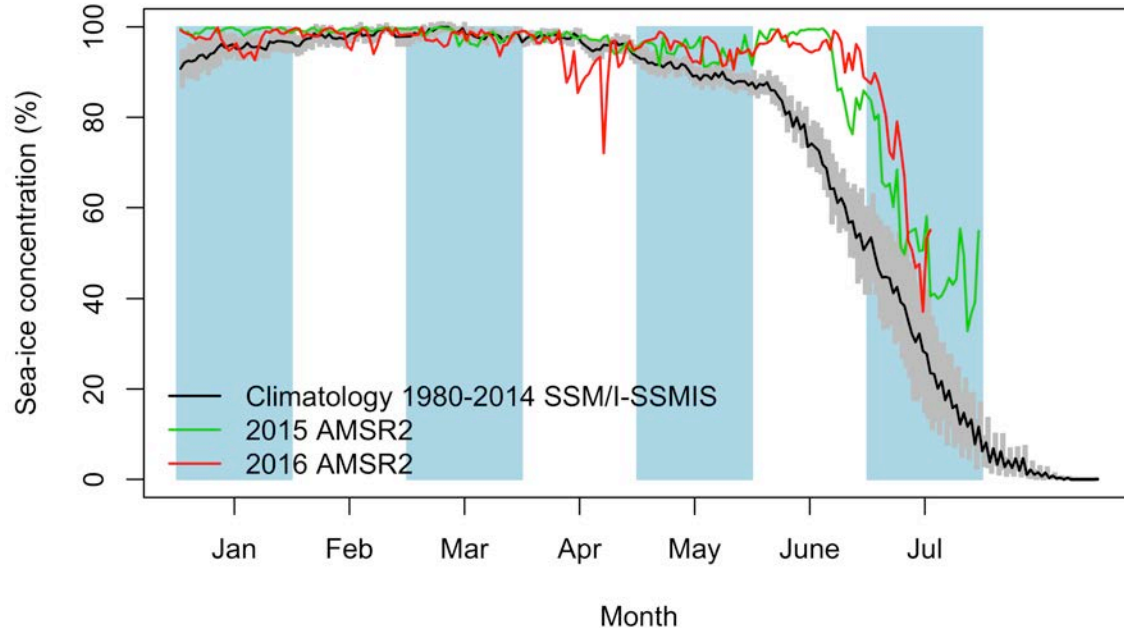
- The marginal ice zone nearest the ice camp is at the Cape Dyer. The distance between the ice camp and the marginal ice zone is 110.4 km.
- The marginal ice zone in the middle of Davis Strait is at a distance of 113.6 km of the ice camp. This distance decreased from 294.0 km (May 5th) to 287.3 km (May 10th) to 248.4 km (May 17th) to 245.1 km (May 18th) to 252.3 km (May 22nd) to 233.4 km (May 29th) to 232.2 km (June 10th) to 235.4 km (June 15th) to 240.7 km (June 27th) to 188.9 km (July 4th) to 108.2 km (July 9th) to 162.2 km (July 15th) to 98.0 km (July 16th) to 113.6 km (July 17th).

July 17th

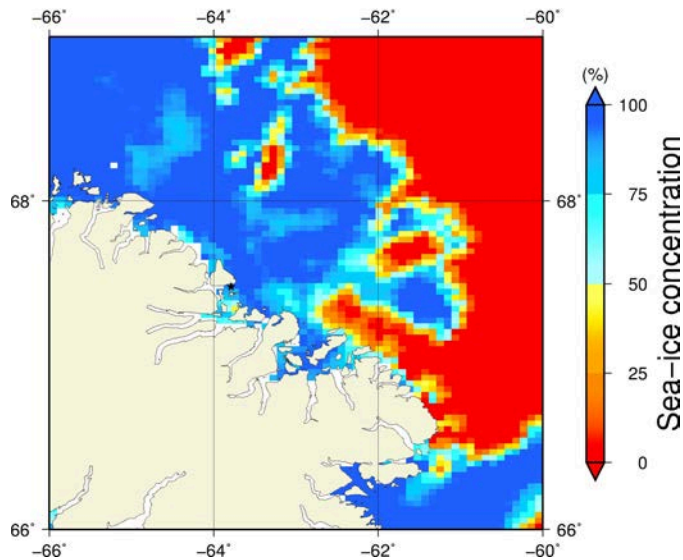
AMSR2 sea-ice concentration and MODIS chlorophyll-a concentration



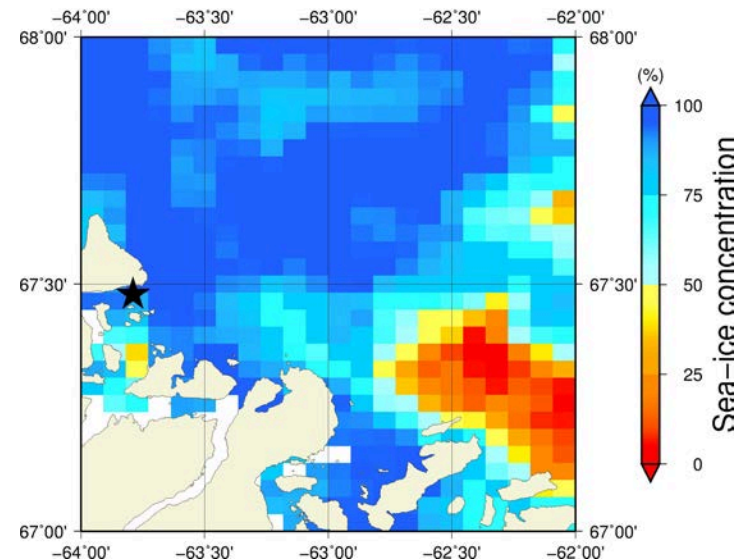
July 17th (AMSR2) Sea - ice concentration in the region 66° to 69°N and -66° to -60°E



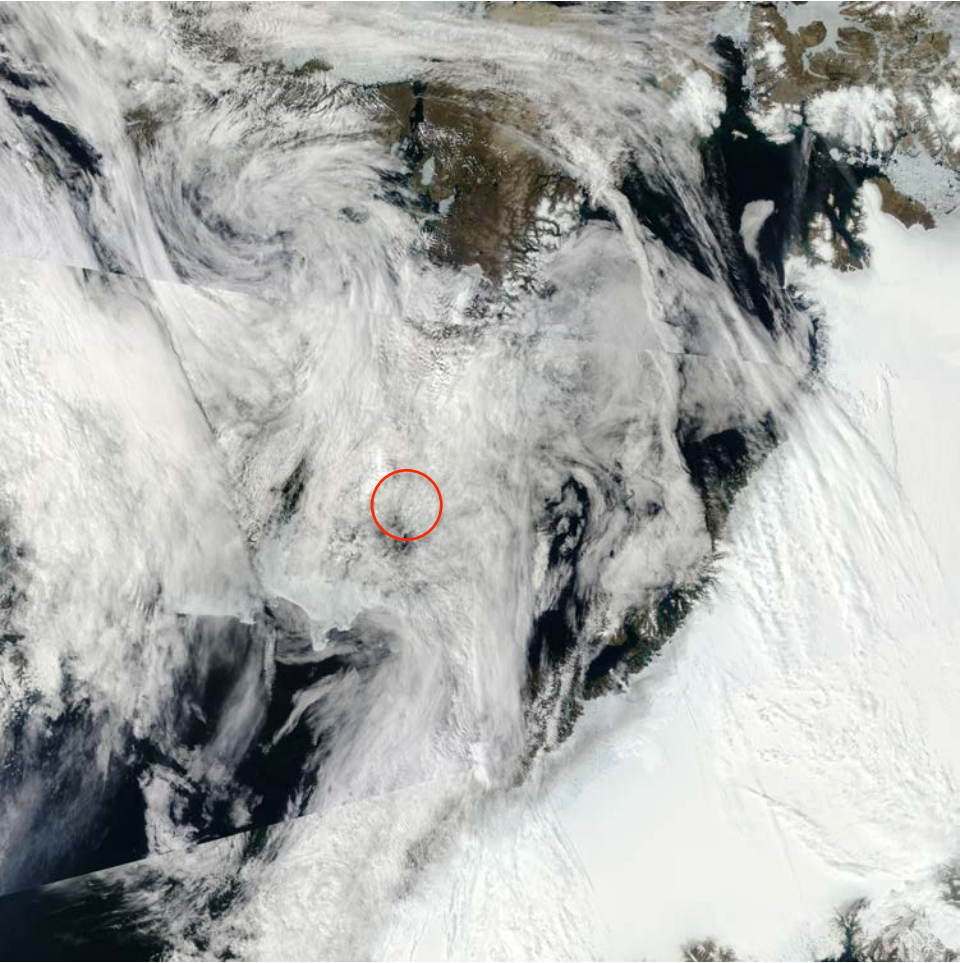
Overview



Zoom



July 17th (MODIS)



July 17th (Sentinel-1)

