

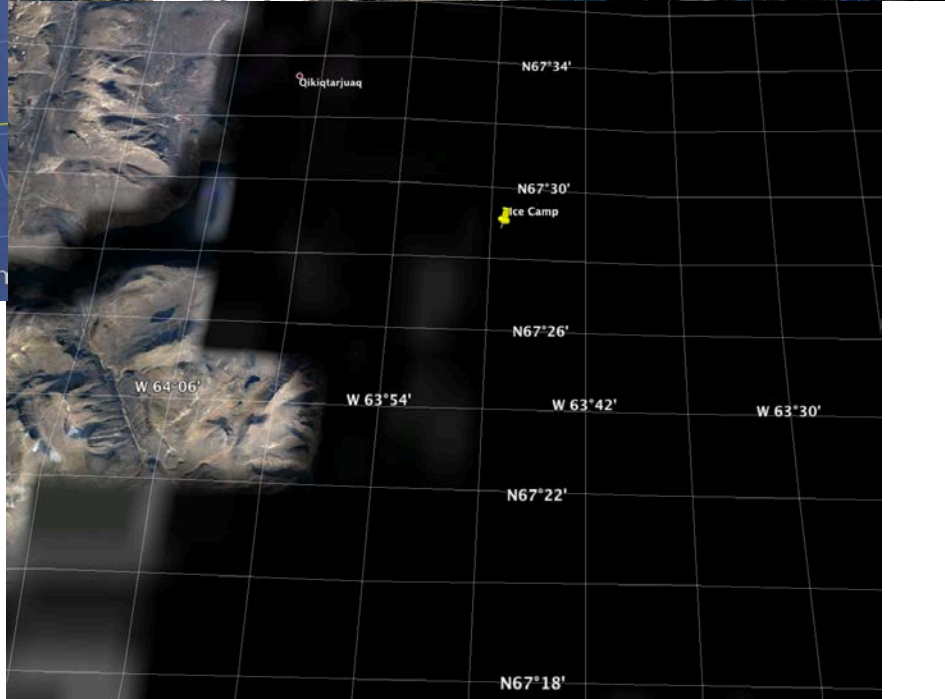
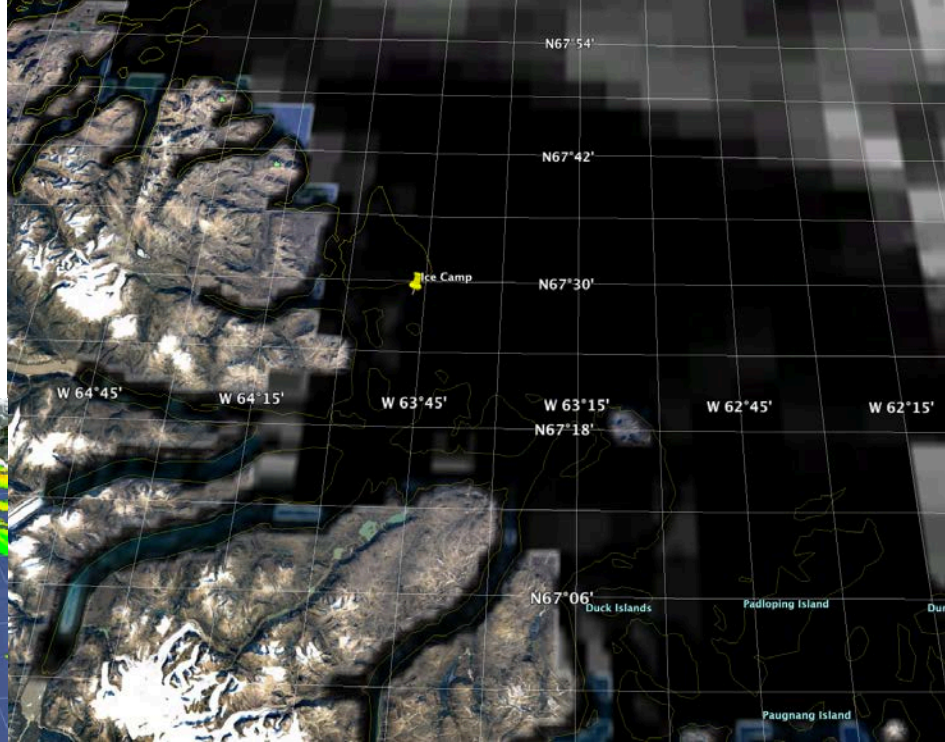
# Green Edge Ice Camp

# Comments

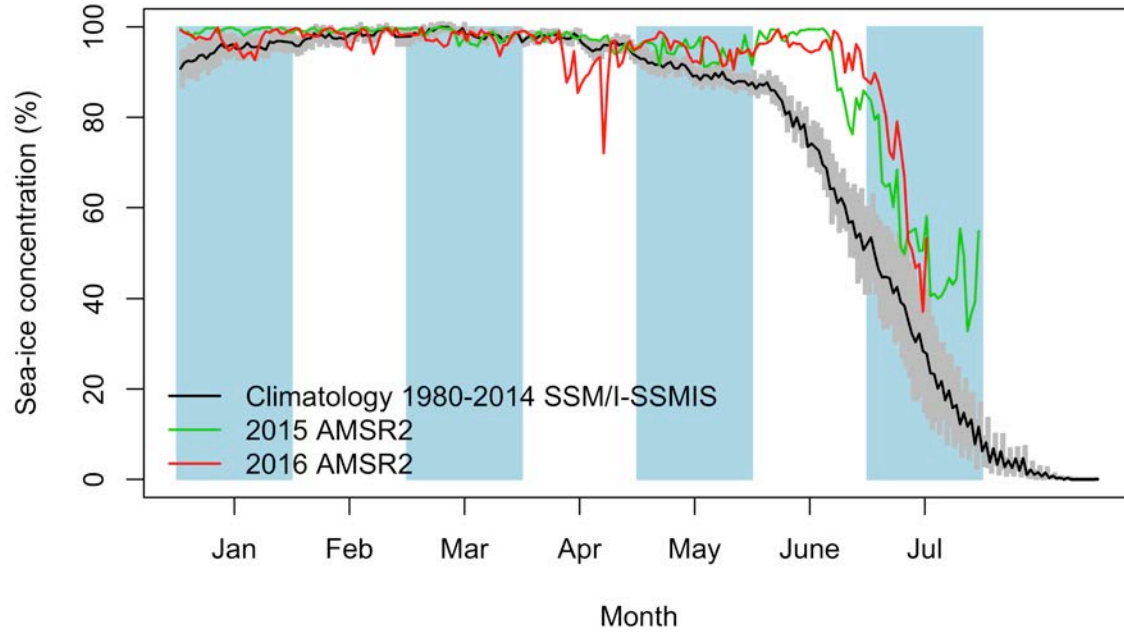
- On the Sentinel-1 image, we observe that the distance between the ice camp and the marginal ice zone is 98.0 km. This distance decreased from 294.0 km (May 5<sup>th</sup>) to 287.3 km (May 10<sup>th</sup>) to 248.4 km (May 17<sup>th</sup>) to 245.1 km (May 18<sup>th</sup>) to 252.3 km (May 22<sup>nd</sup>) to 233.4 km (May 29<sup>th</sup>) to 232.2 km (June 10<sup>th</sup>) to 235.4 km (June 15<sup>th</sup>) to 240.7 km (June 27<sup>th</sup>) to 188.9 km (July 4<sup>th</sup>) to 108.2 km (July 9<sup>th</sup>) to 162.2 km (July 15<sup>th</sup>) to 98.0 km (July 16<sup>th</sup>).
- The distance between the ice camp and the land-fast ice edge is 3.4 km. It was 3.6 km on July 15<sup>th</sup>.

July 16<sup>th</sup>

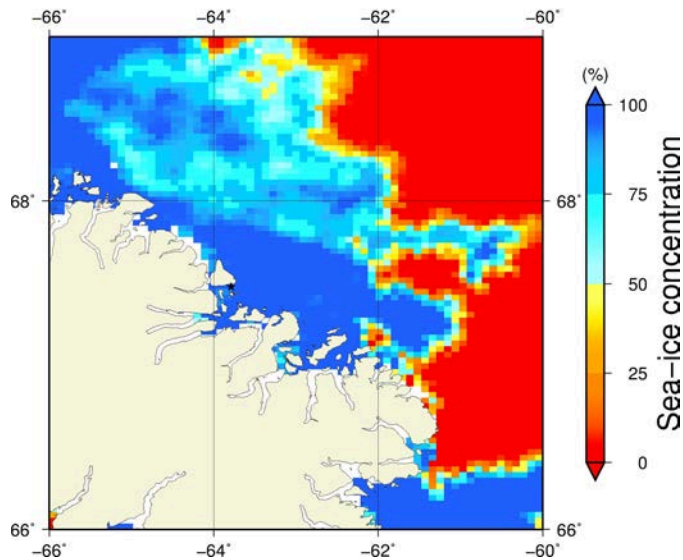
# AMSR2 sea-ice concentration and MODIS chlorophyll-a concentration



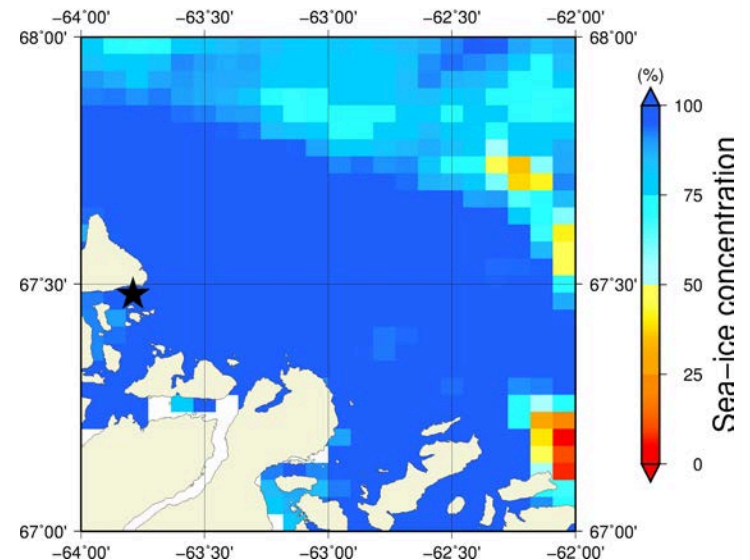
# July 16<sup>th</sup> (AMSR2) Sea-ice concentration in the region 66° to 69°N and -66° to -60°E



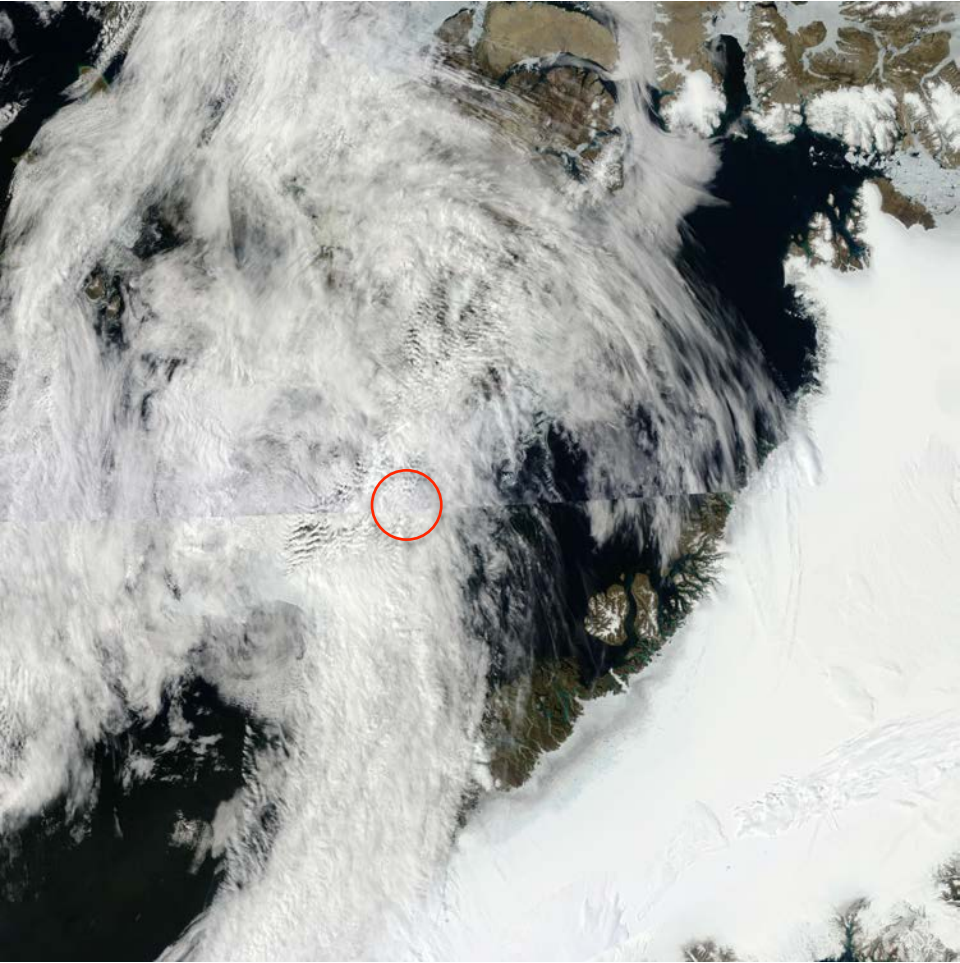
**Overview**



**Zoom**



July 16<sup>th</sup> (MODIS)



# July 16<sup>th</sup> (Sentinel-1)

