

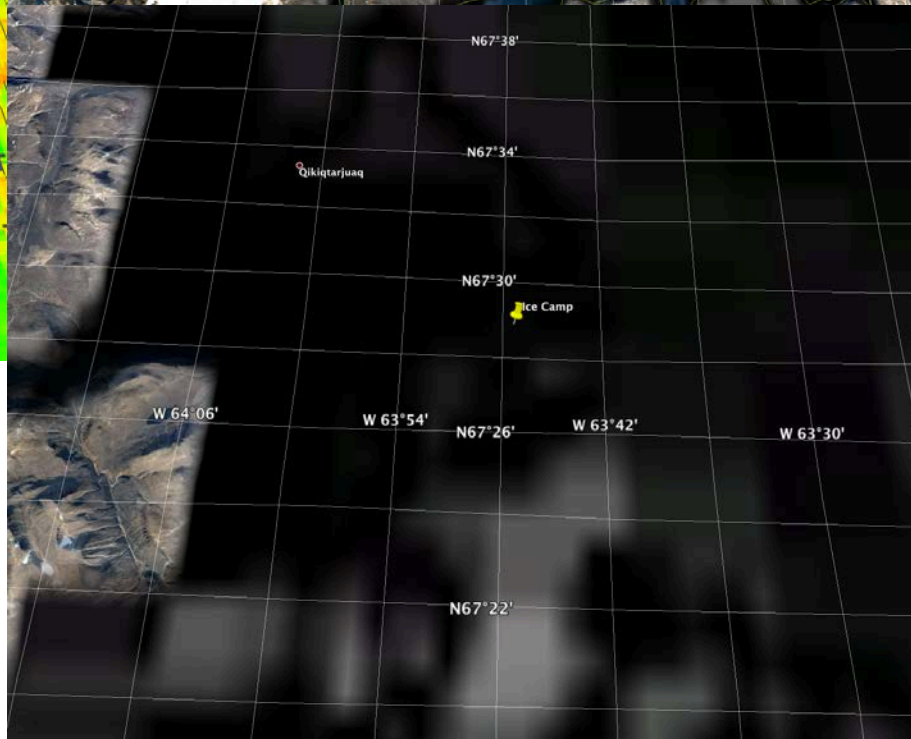
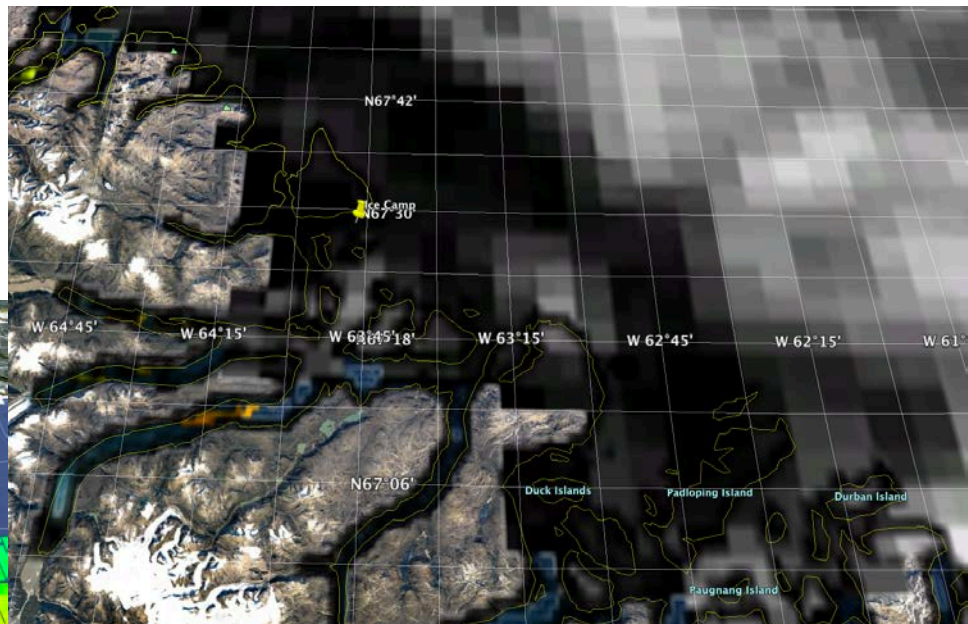
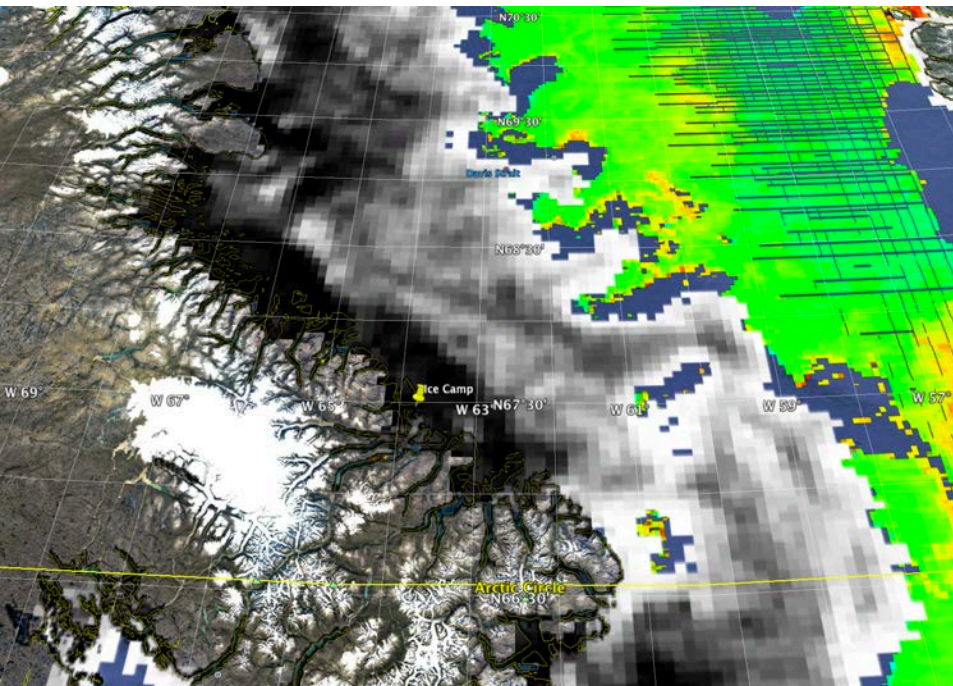
# Green Edge Ice Camp

# Comments

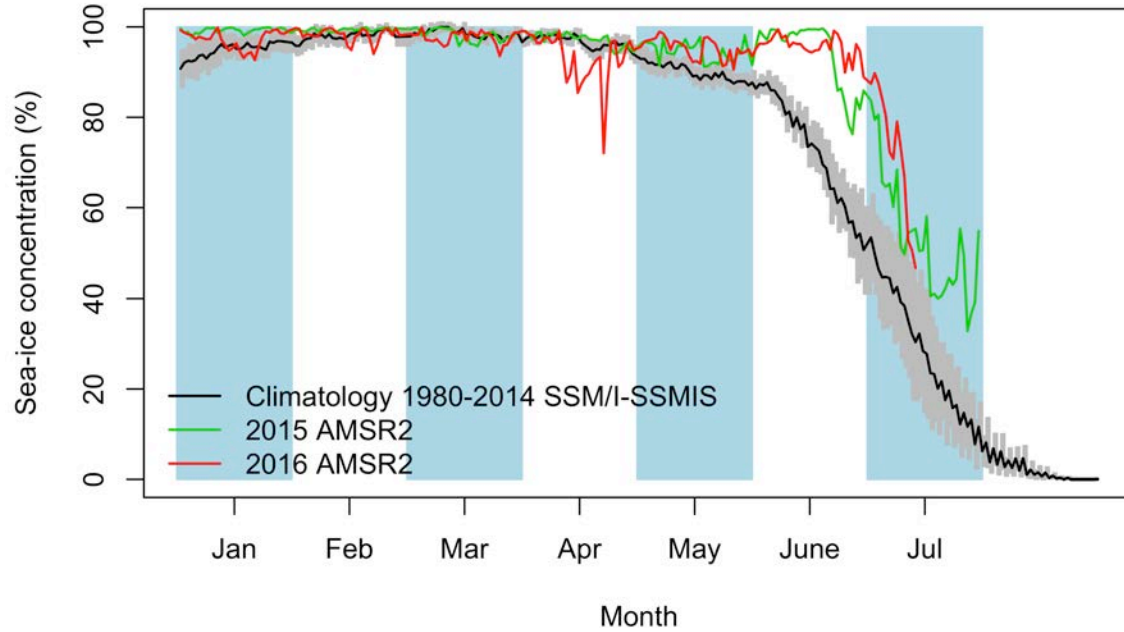
- The land-fast ice edge is now very near the ice camp. It is at only 3.9 km of the ice camp.
- I summarize the evolution of the distance between the land-fast ice edge and the ice camp. It was almost stable between 31.7 km and 35.0 km from April 4<sup>th</sup> to April 21<sup>st</sup>. Then, an important fall occurred from 31.7 km (April 21<sup>st</sup>) to 25.0 km (April 22<sup>nd</sup>). It was stable again between 24.3 km and 25.9 km from April 22<sup>nd</sup> to June 28<sup>th</sup>. It varied from 24.3 km (June 28<sup>th</sup>) to 22.1 km (July 4<sup>th</sup>) to 23.1 km (July 9<sup>th</sup>). Finally, an important fall occurred from 23.1 km to 3.9 km from July 9<sup>th</sup> to July 12<sup>th</sup>.
- We observe a black area near Qikiqtarjuaq on the zoom Sentinel-1 image (Feature A). Feature A can be observed on the MODIS zoom image too. Is it open waters? Is it a big melt pond?

July 13<sup>th</sup>

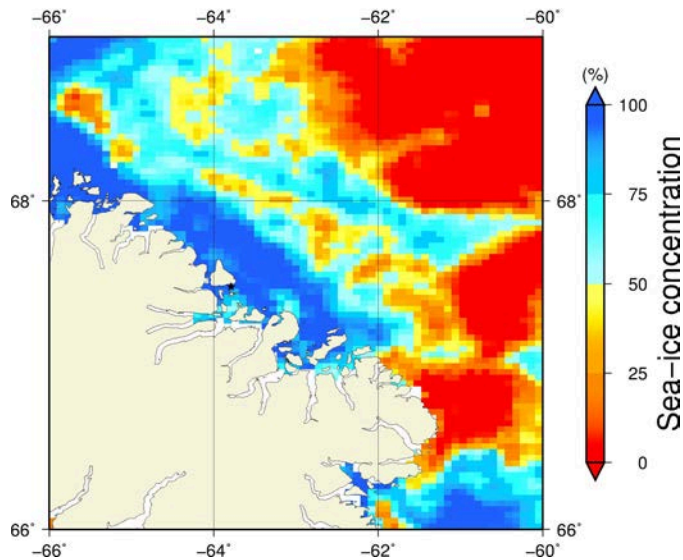
# AMSR2 sea-ice concentration and MODIS chlorophyll-a concentration



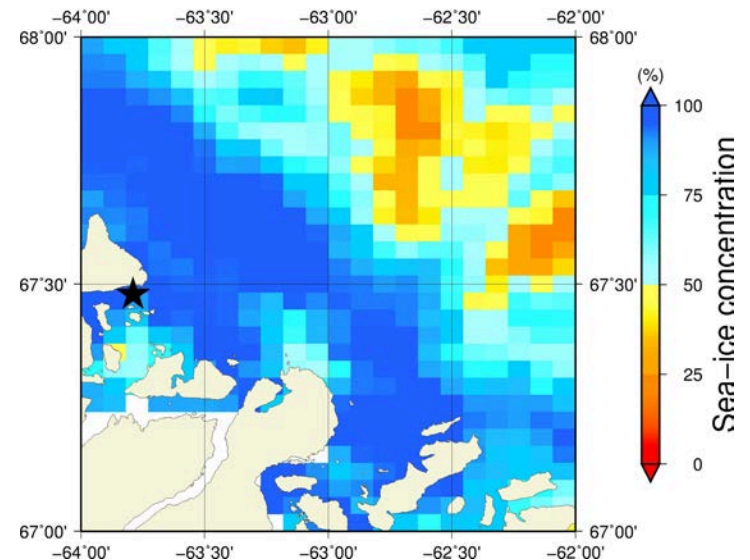
# July 13<sup>th</sup> (AMSR2) Sea-ice concentration in the region 66° to 69°N and -66° to -60°E



**Overview**



**Zoom**

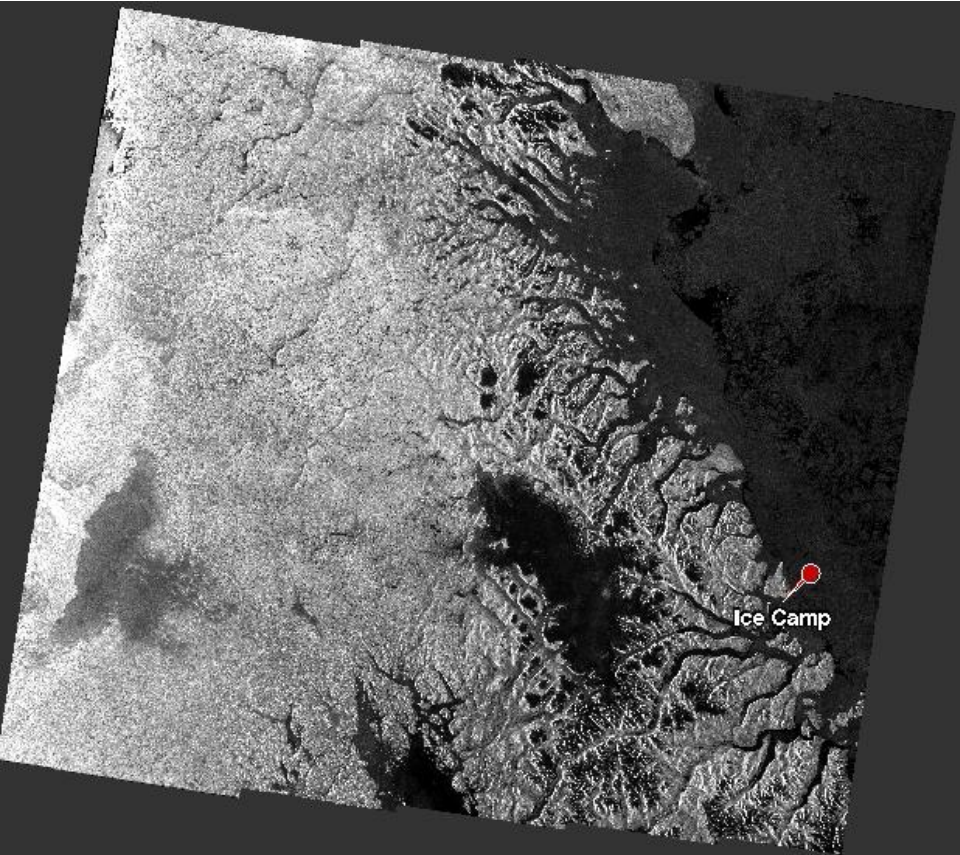


July 13<sup>th</sup> (MODIS)



Feature A

July 13<sup>th</sup> (Sentinel-1)



Feature A



# Sea-ice concentration

# CIS Ice charts

# Stage of development

