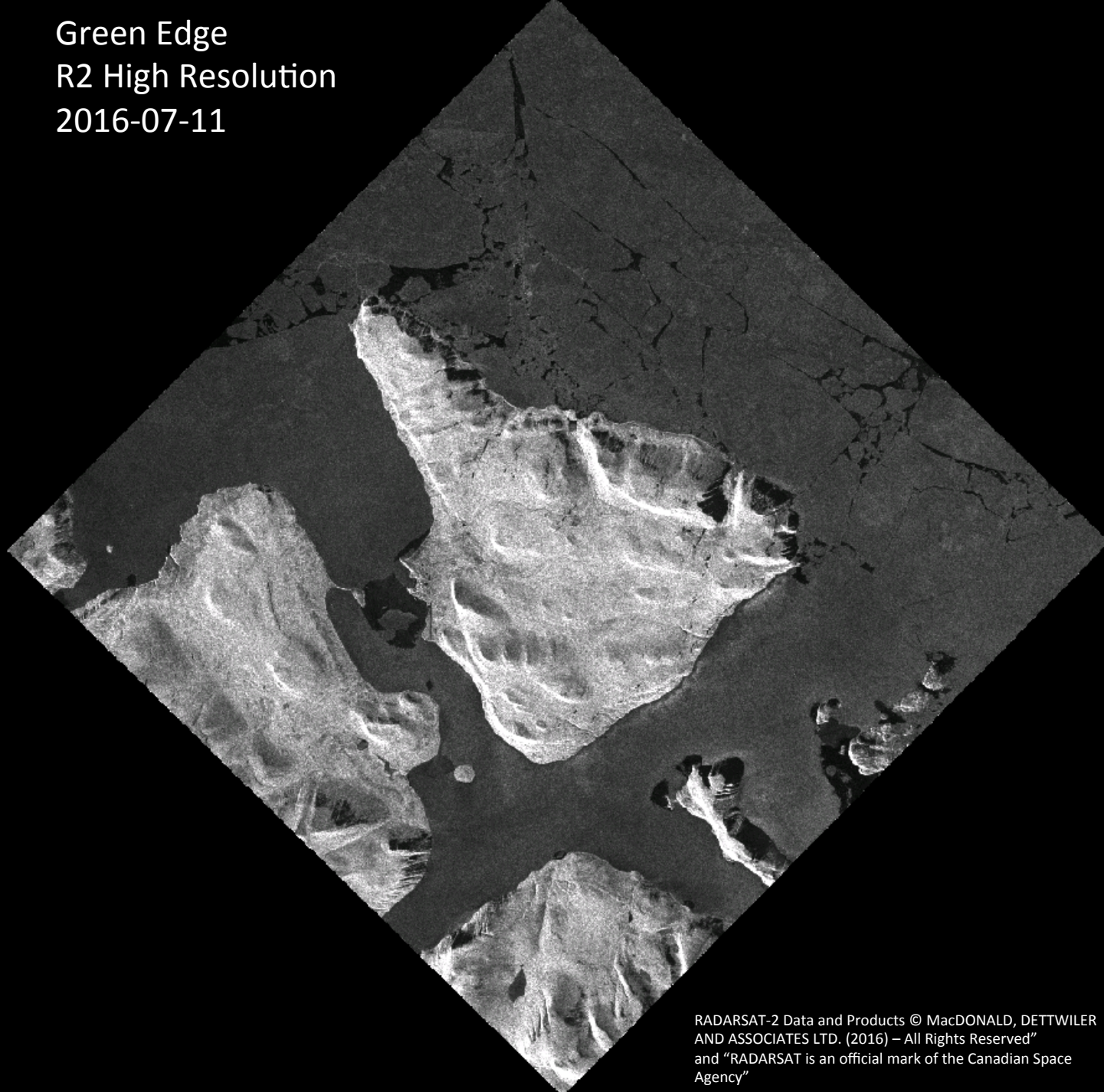


# Green Edge Ice Camp

# Comments

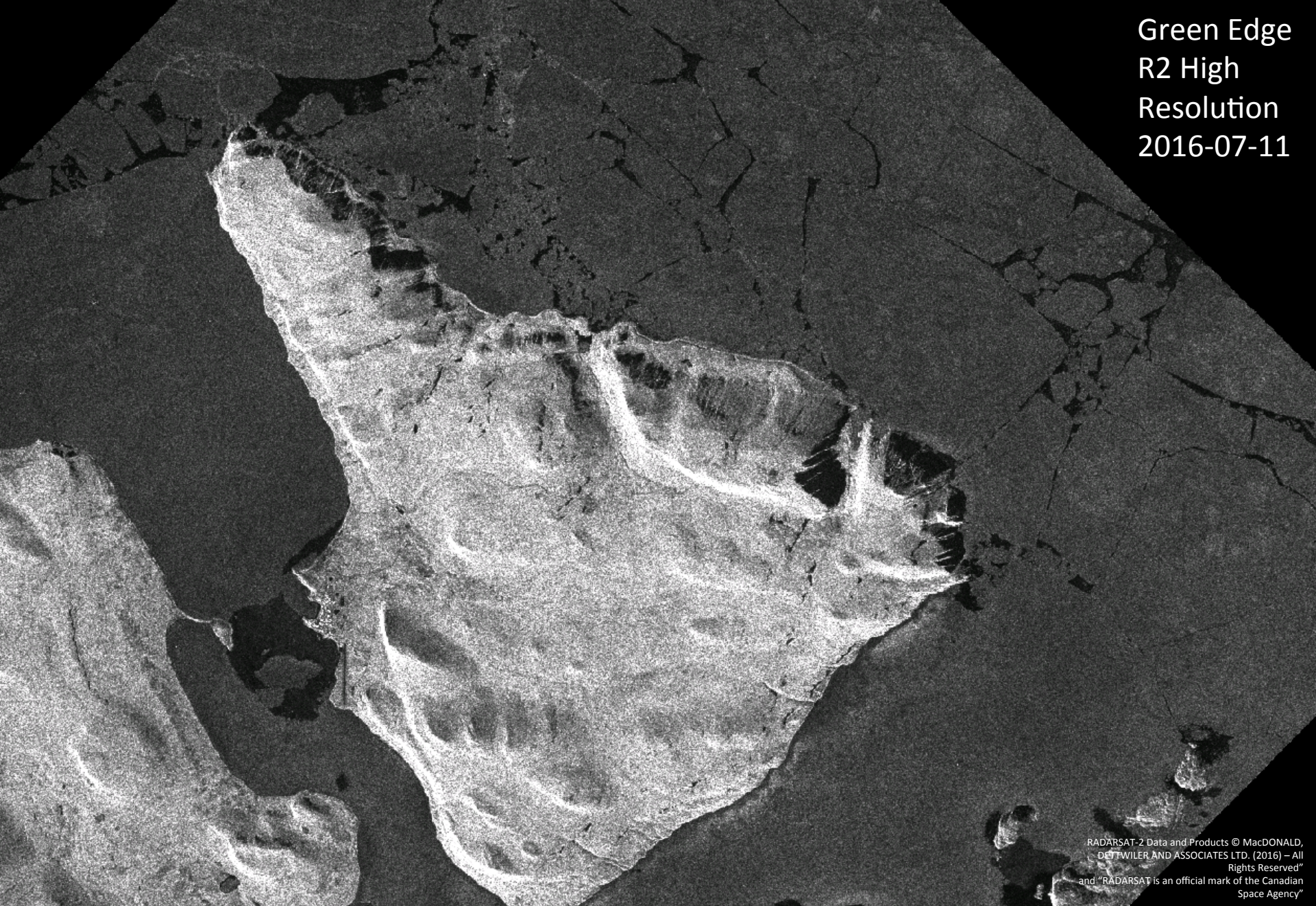
- We have two RADARSAT-2 high-resolution images thanks to Henry Jupe from the Canadian Ice Service. I added a third image with the ice camp position.
- The AMSR2 low-resolution sea ice concentration and the chlorophyll-a concentration for Baffin Bay will continue being produced and distributed on <https://goo.gl/SwM77o> for the ice camp and the floats. Google Earth Pro screen captures centered on the ice camp will be added to the daily report.
- If you don't want receiving this daily email until the end of the ice camp, reply with the subject UNSUBSCRIBE please.

Green Edge  
R2 High Resolution  
2016-07-11



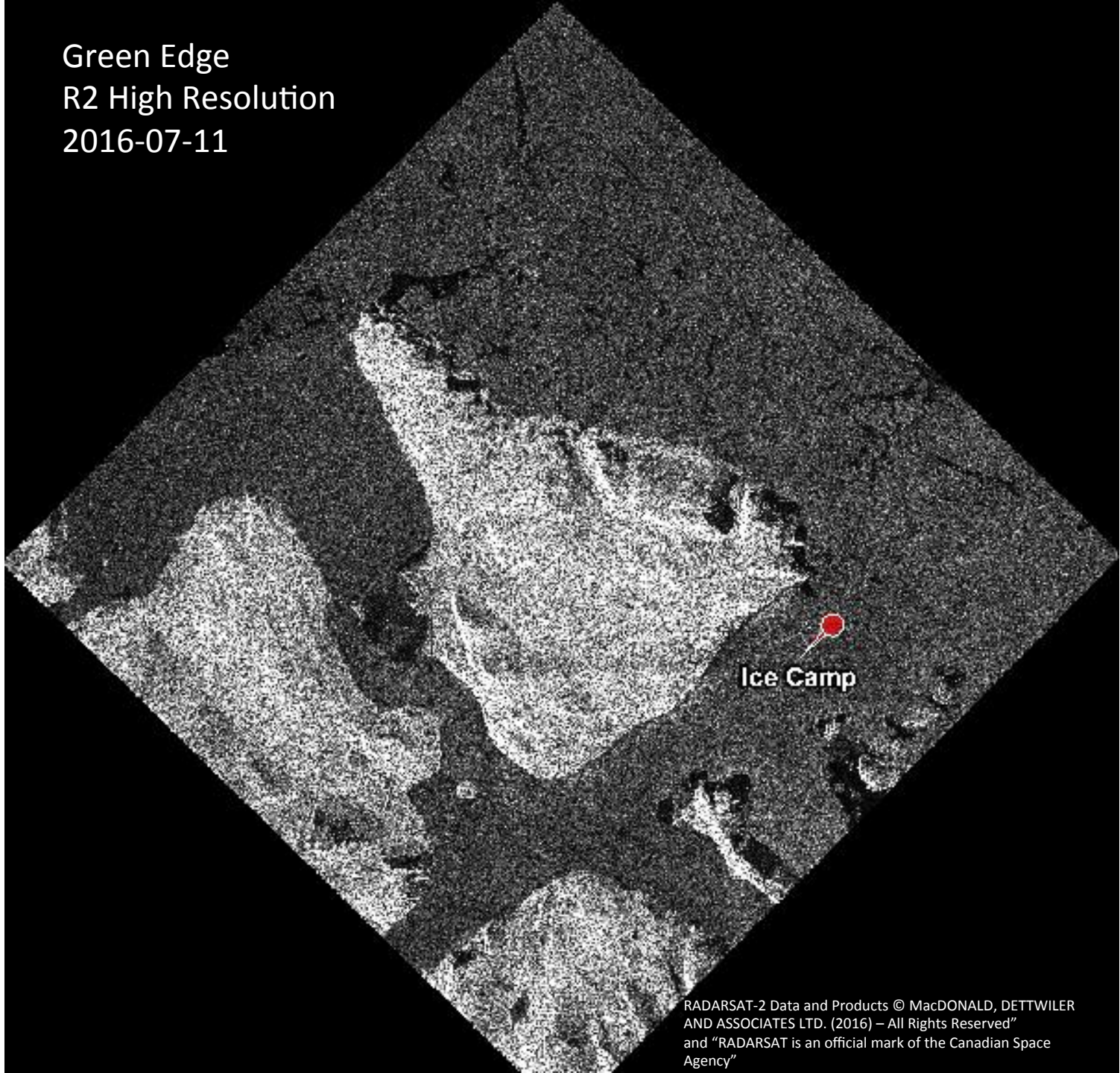
RADARSAT-2 Data and Products © MacDONALD, DETTWILER  
AND ASSOCIATES LTD. (2016) – All Rights Reserved”  
and “RADARSAT is an official mark of the Canadian Space  
Agency”

Green Edge  
R2 High  
Resolution  
2016-07-11



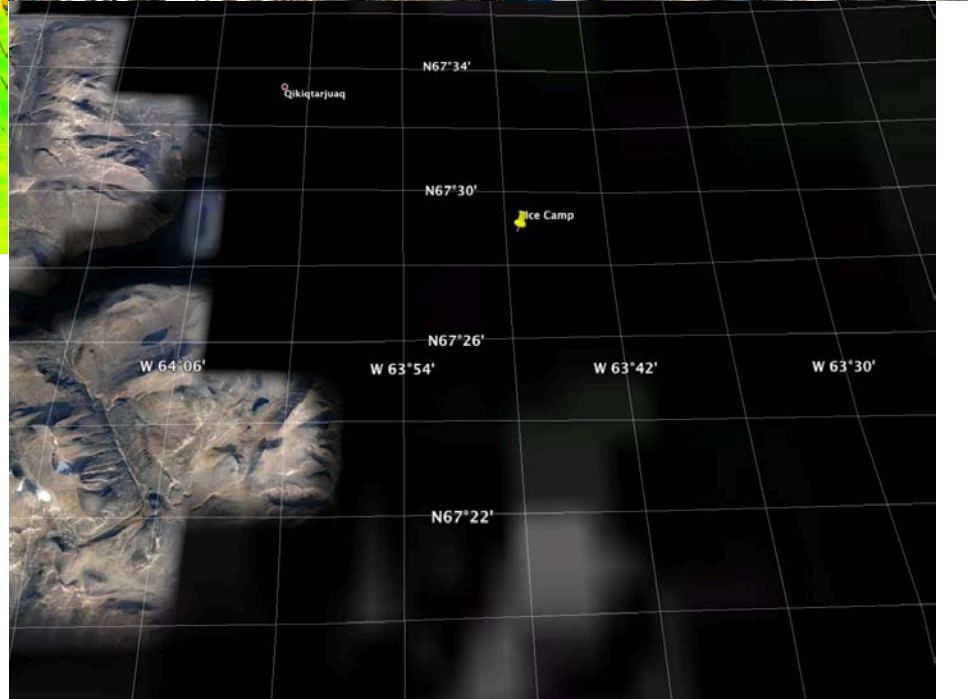
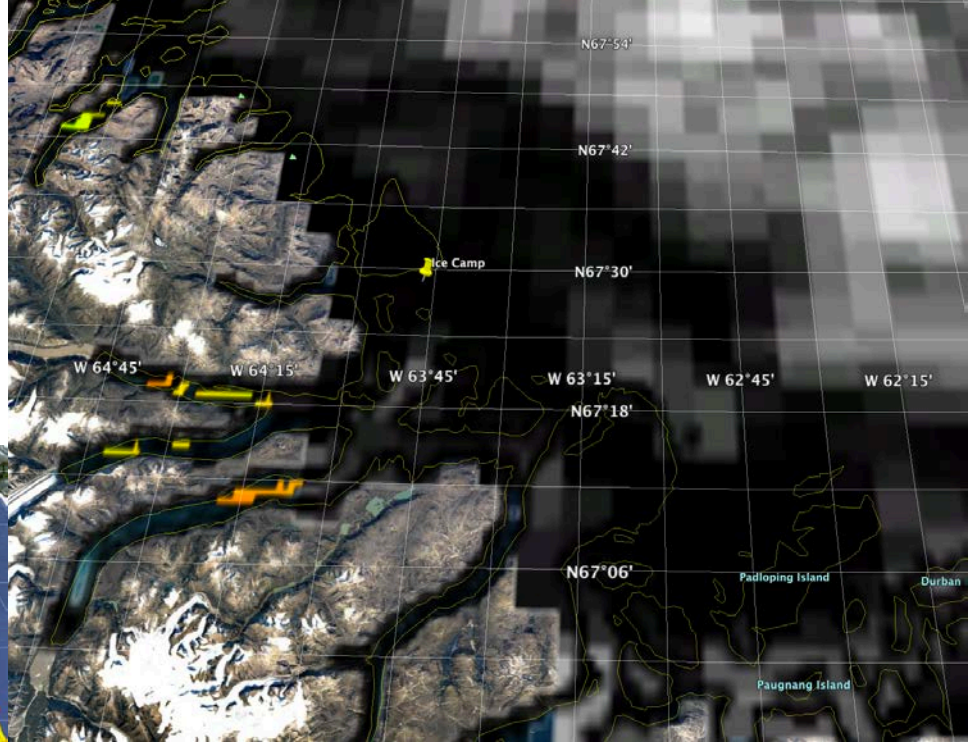
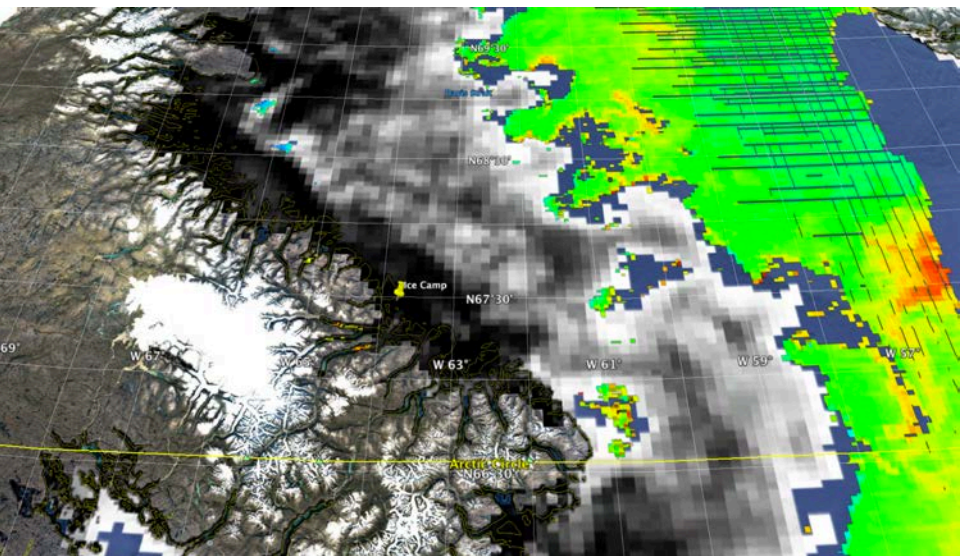
RADARSAT-2 Data and Products © MacDONALD,  
DETWILER AND ASSOCIATES LTD. (2016) – All  
Rights Reserved”  
and “RADARSAT is an official mark of the Canadian  
Space Agency”

Green Edge  
R2 High Resolution  
2016-07-11

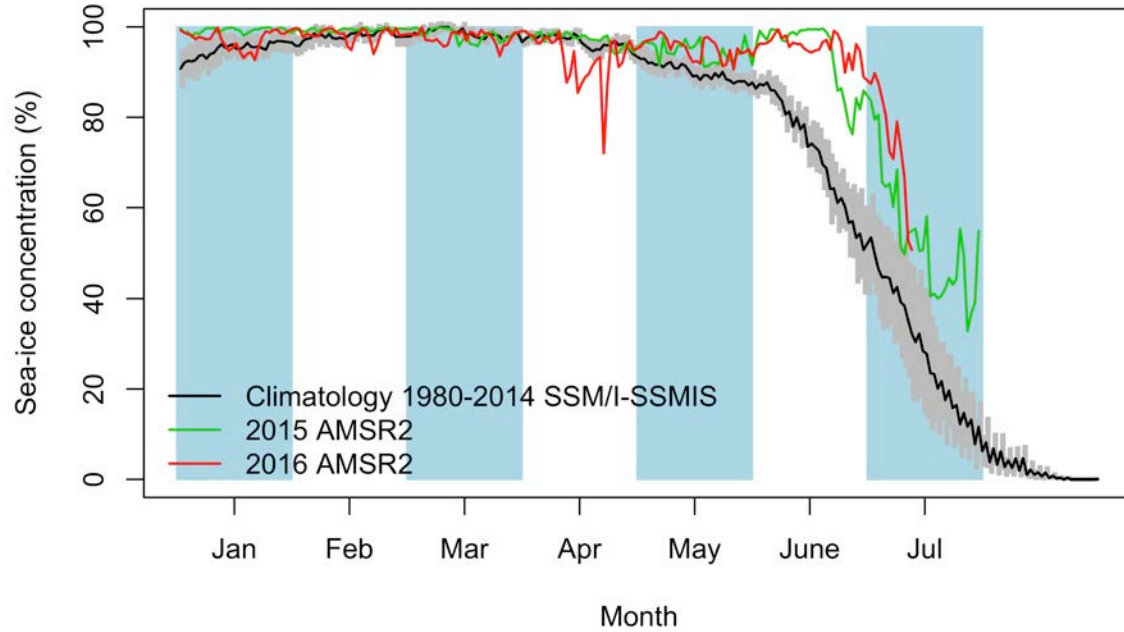


July 12<sup>th</sup>

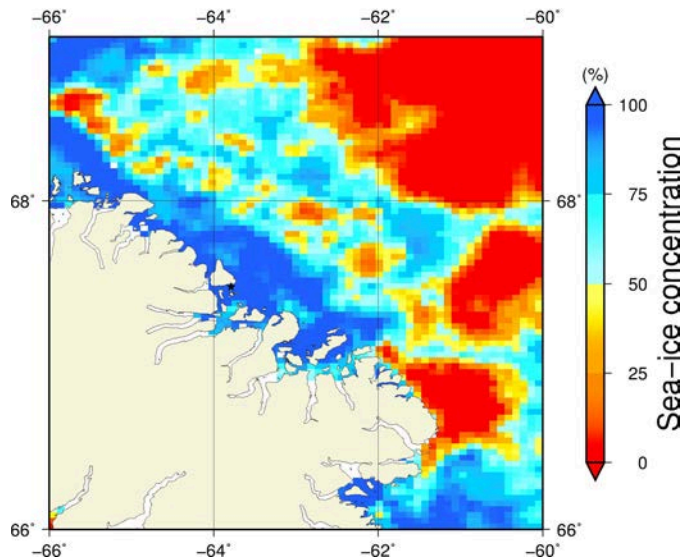
# AMSR2 sea-ice concentration and MODIS chlorophyll-a concentration



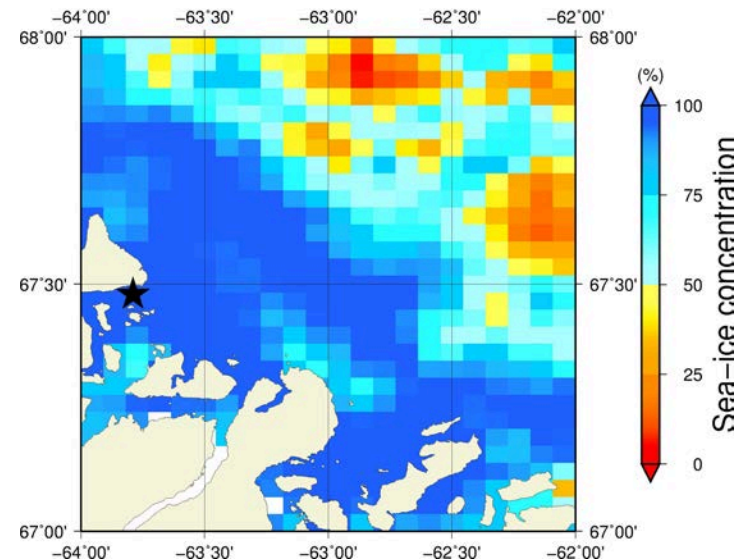
# July 12<sup>th</sup> (AMSR2) Sea-ice concentration in the region 66° to 69°N and -66° to -60°E



**Overview**



**Zoom**



July 12<sup>th</sup> (MODIS)

