

Green Edge Amundsen

Comments

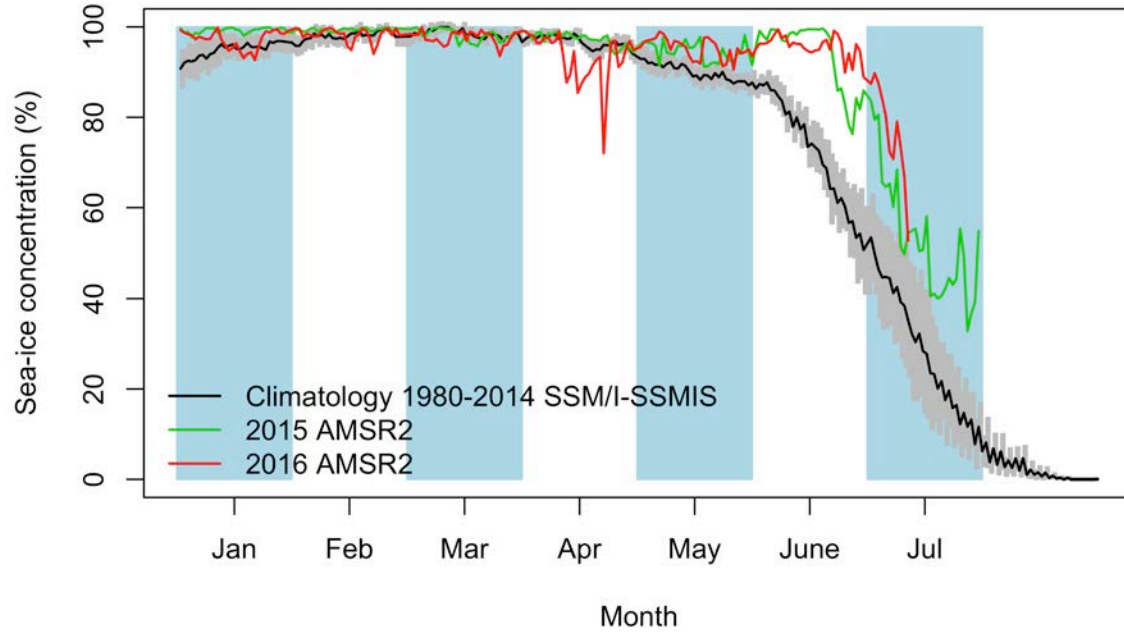
- There will be no more satellite images for Green Edge Amundsen from today because the scientific operations are completed. Note that satellite images for the ice camp will still be generated.

Green Edge Ice Camp

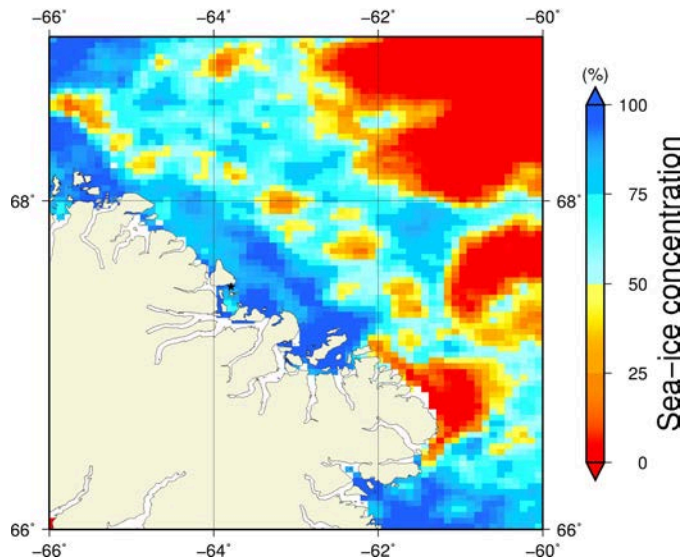
Comments

- The sea ice concentration in the region around Broughton Island (66 to 69°N / -66 to -60 °E) fell from 79% to 53% between July 8th and July 11th.

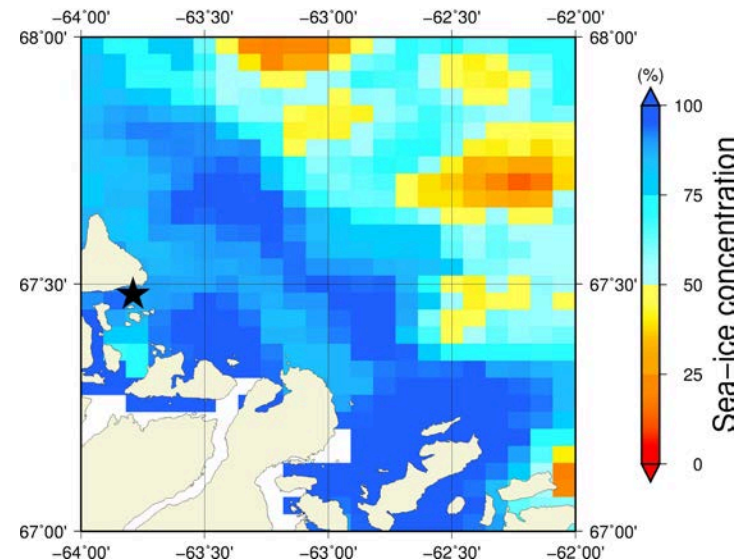
July 11th (AMSR2) Sea - ice concentration in the region 66° to 69°N and -66° to -60°E



Overview



Zoom



July 11th (MODIS)

