

Green Edge General

Comments

- AMSR2 sea ice concentration data is back online.

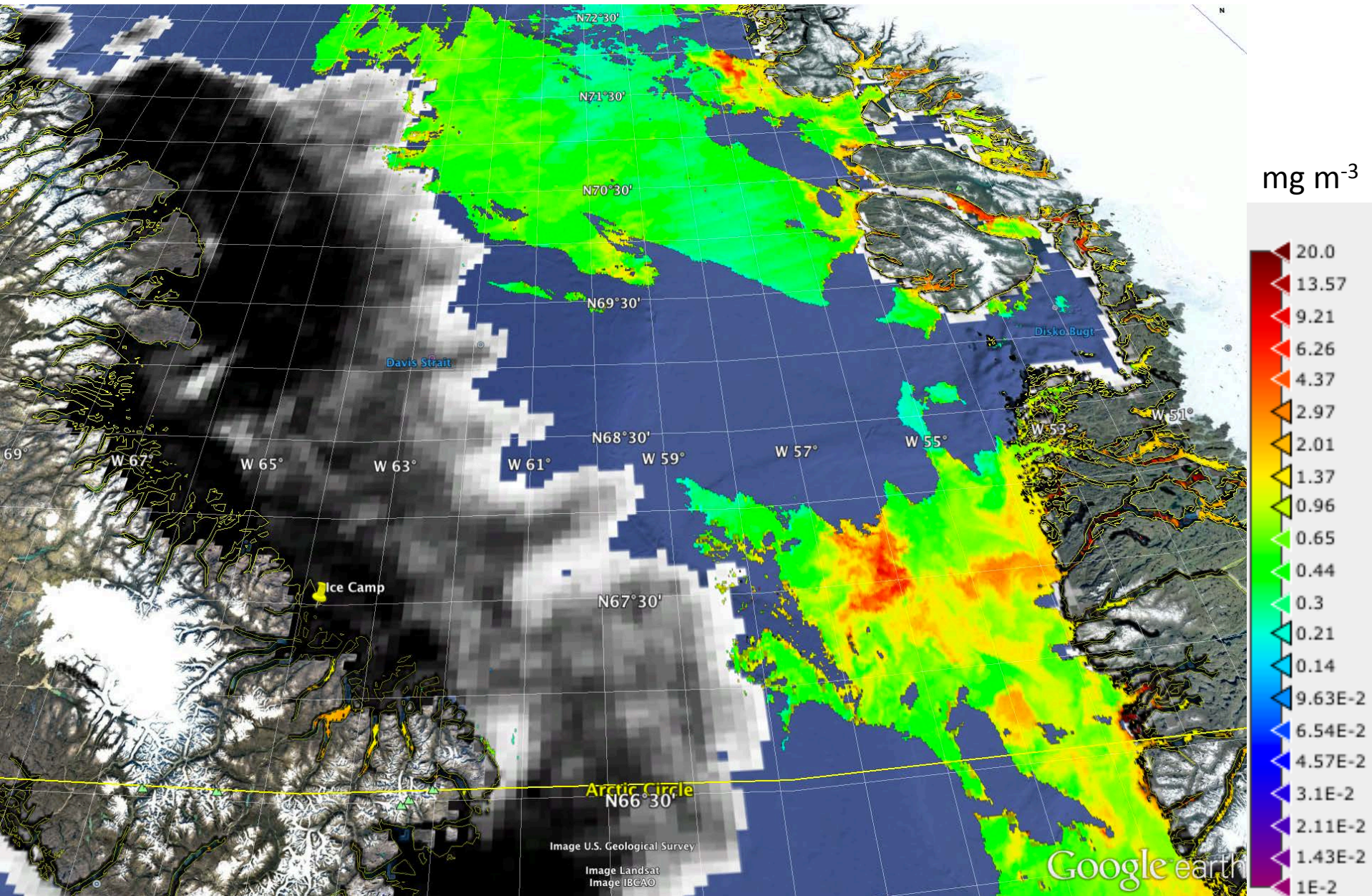
Green Edge Amundsen

Comments

- The images S1-2016-07-10-68-60-100.tif (94 MB), S1-2016-07-10-69-60-100 (5 MB) and S1-2016-07-10-71-65-500.tif (39 MB) on <http://gliders.takuvik.ulaval.ca/ice/S12> and subset_transect_of_S1-2016-07-10-68-60-100.tif (8 MB) and subset_transect_of_S1-2016-07-10-71-65-500.tif (0 MB) on <https://goo.gl/SwM77o> contain new data. I would recommend downloading them.

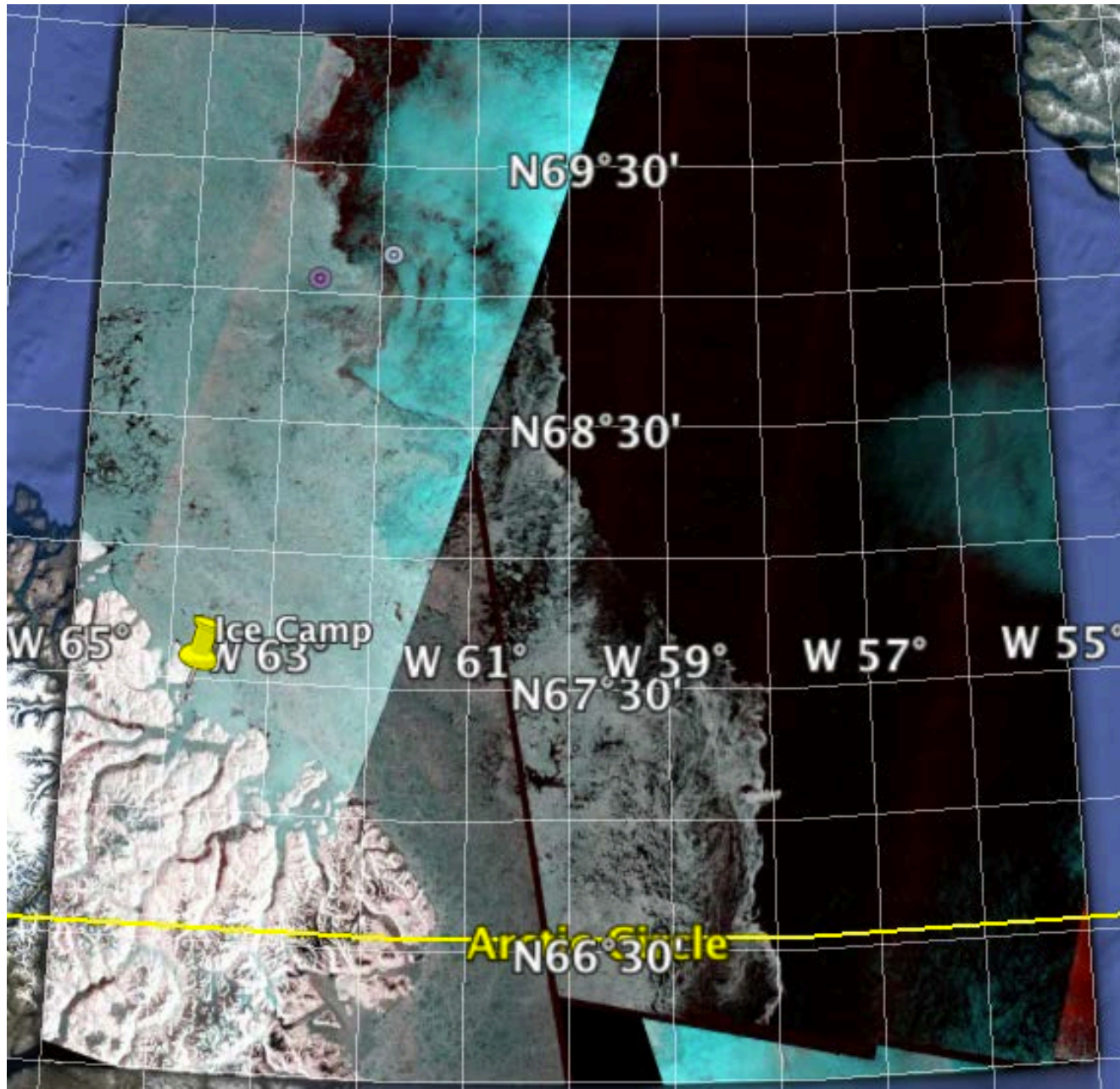
July 10th

AMSR2 sea-ice concentration and MODIS chlorophyll-a concentration



July 10th

Sentinel-1 (S1-2016-07-10-68-60-100.tif, 94 MB)



July 10th

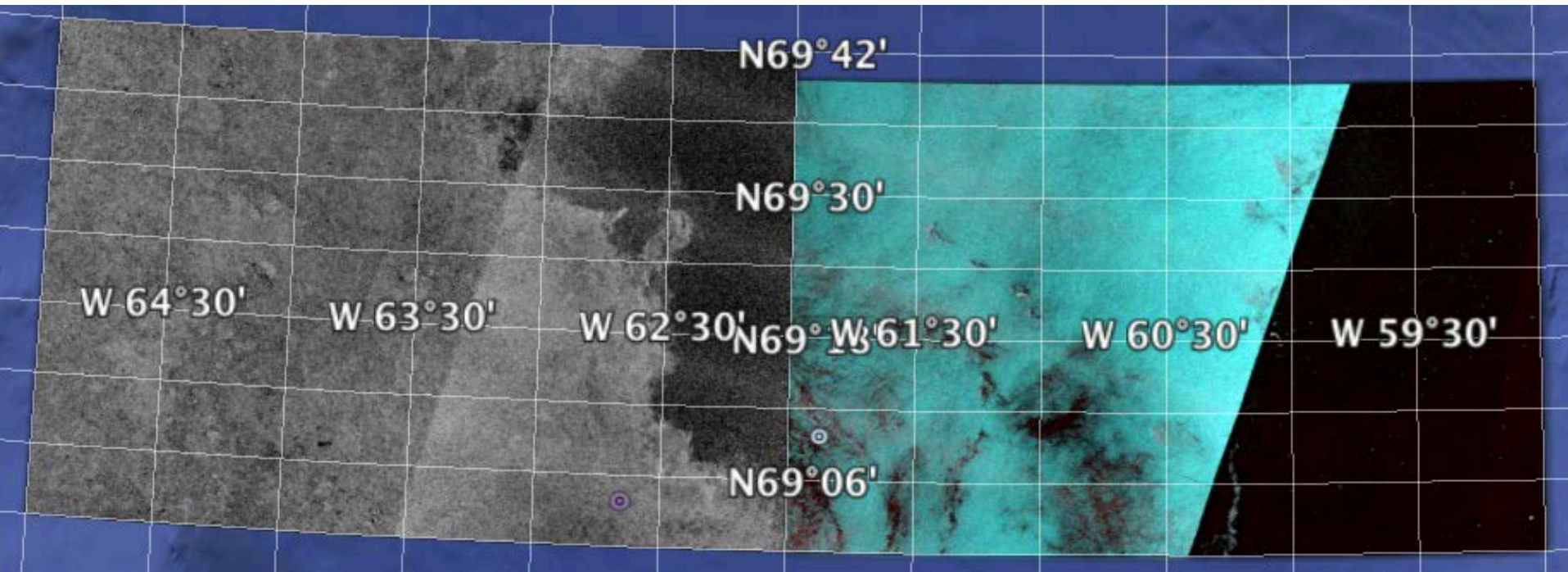
Sentinel-1

(subset_transect_of_S1-2016-07-10-68-60-100.tif, 8 MB)

at <https://goo.gl/SwM77o>.

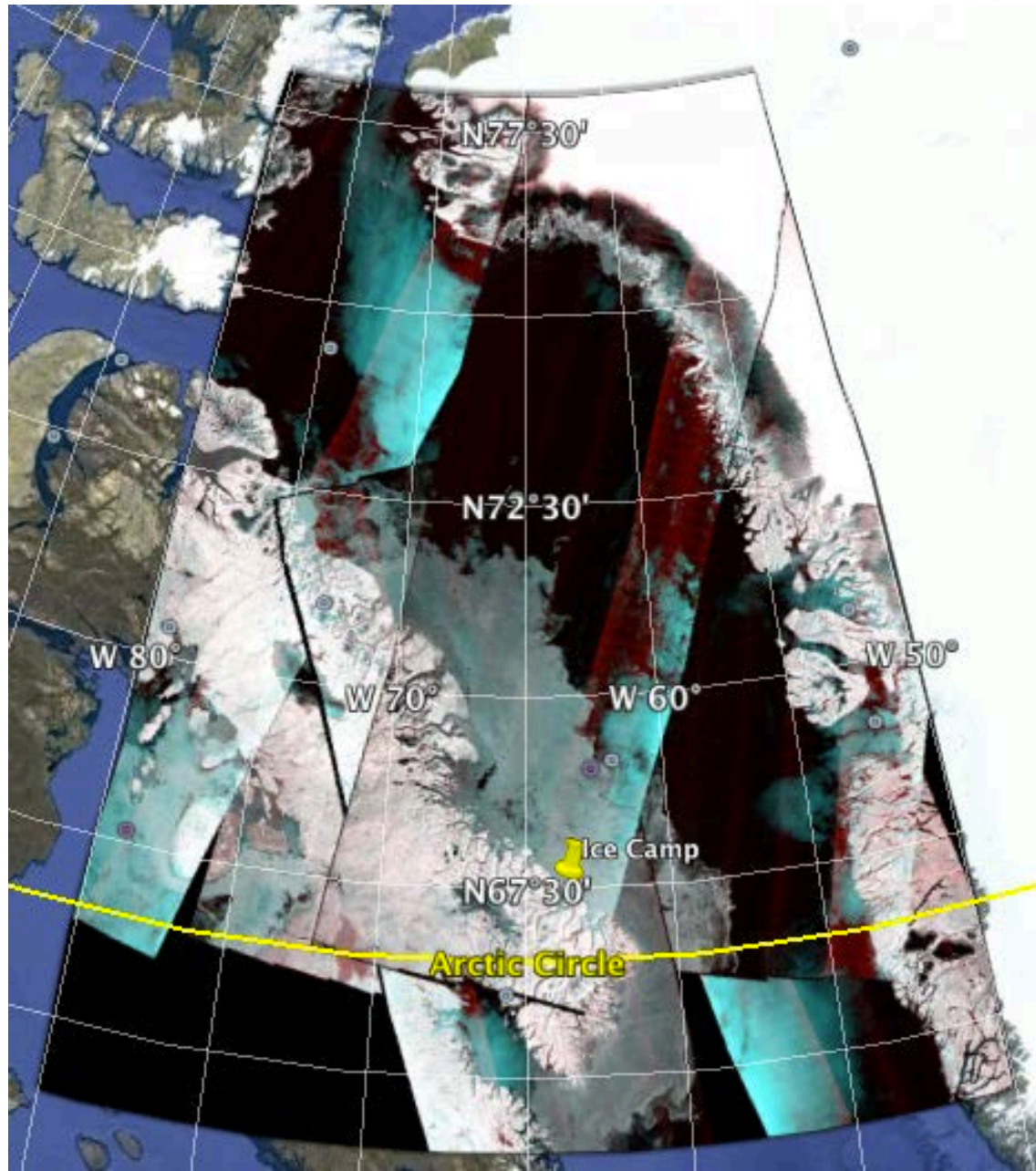
Sentinel-1 (S1-2016-07-10-69-60-100, 5 MB)

on <http://gliders.takuvik.ulaval.ca/ice/S12>.



July 10th

Sentinel-1 (S1-2016-07-10-71-65-500.tif, 39 MB)



July 10th

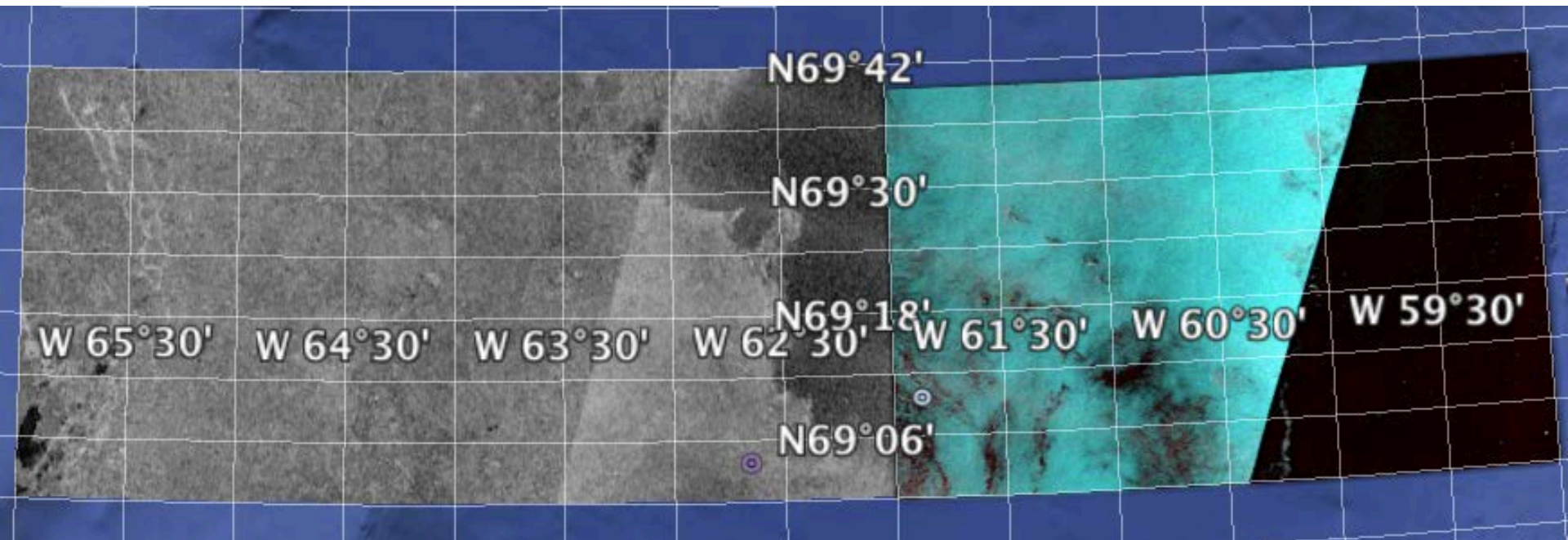
Sentinel-1

(subset_transect_of_S1-2016-07-10-71-65-500.tif, 0 MB)

at <https://goo.gl/SwM77o>.

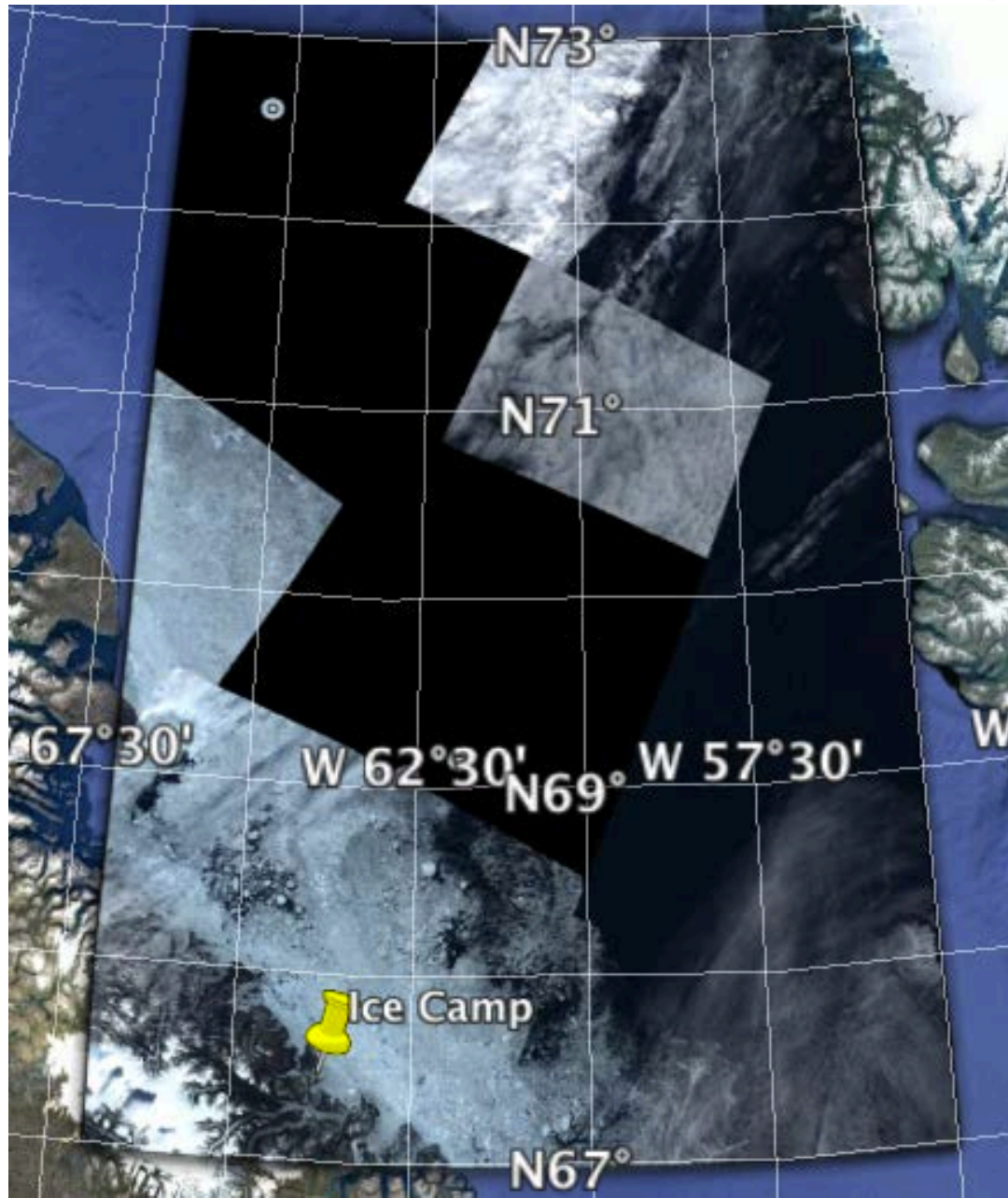
Sentinel-1 (S1-2016-07-10-69-60-100, 5 MB)

on <http://gliders.takuvik.ulaval.ca/ice/S12>.



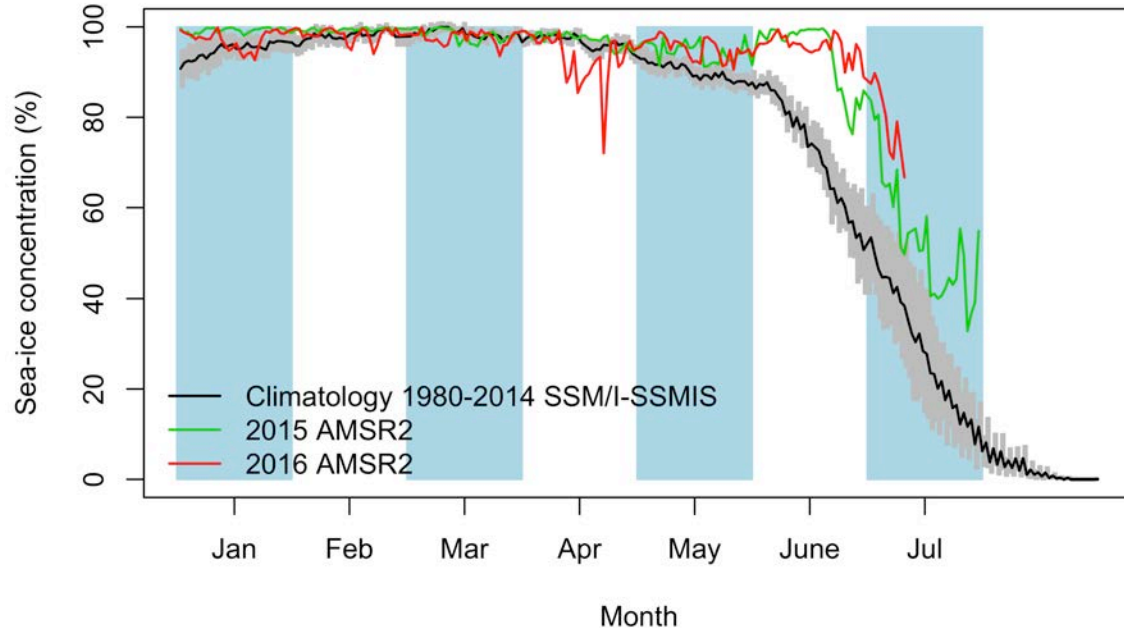
July 10th

Sentinel-2 (S2-2016-07-10-70-61-50.tif, 477 MB)

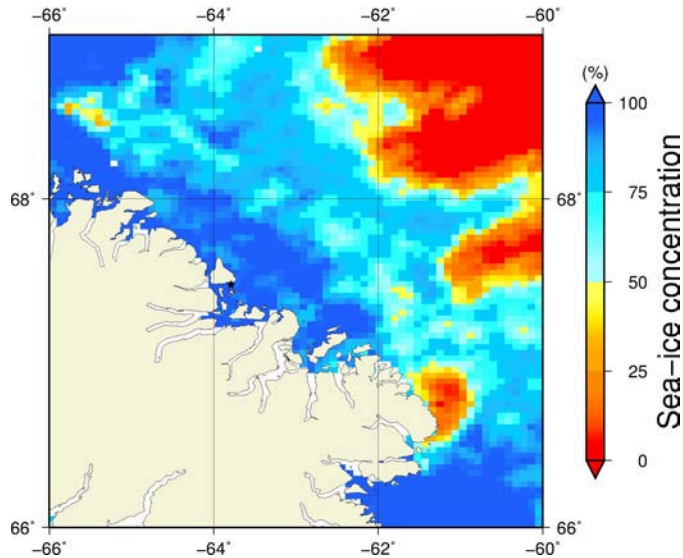


Green Edge Ice Camp

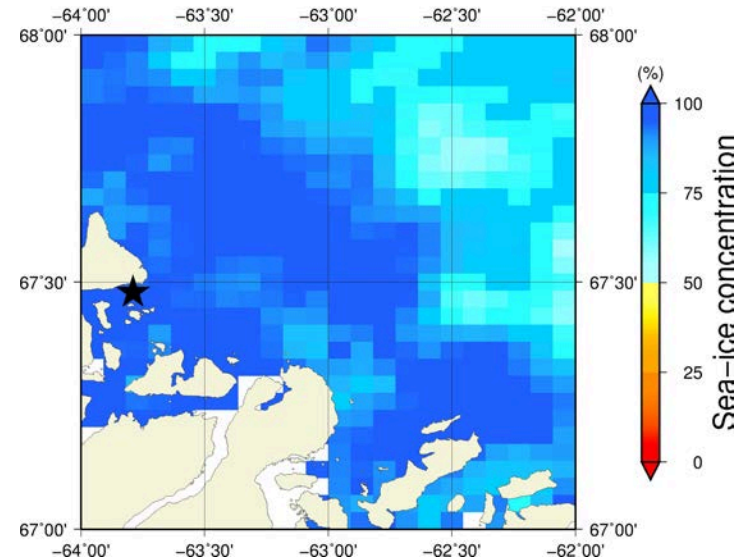
July 10th (AMSR2) Sea - ice concentration in the region 66° to 69°N and -66° to -60°E



Overview



Zoom



July 10th (MODIS)

