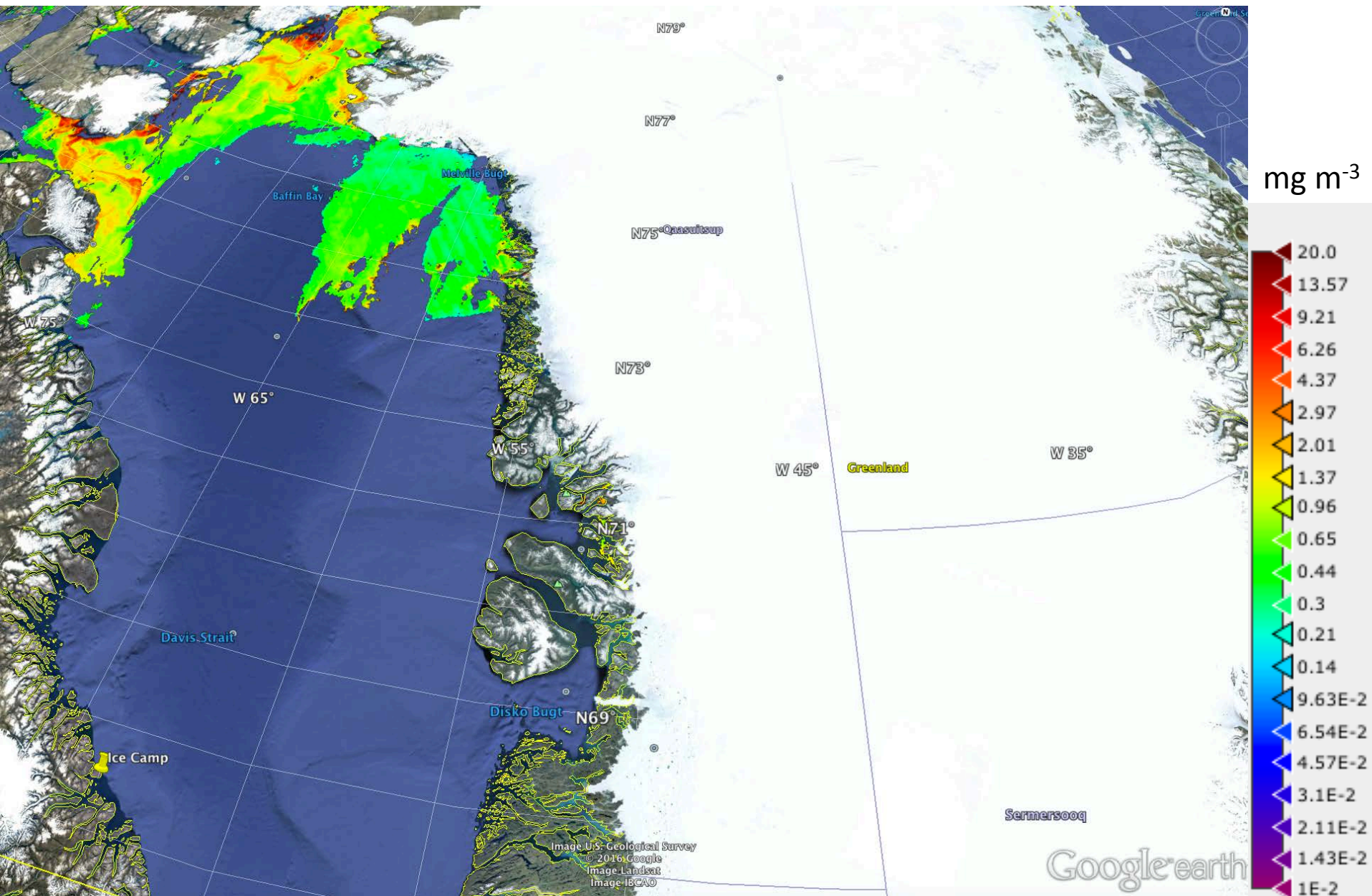


Green Edge Amundsen

Comments

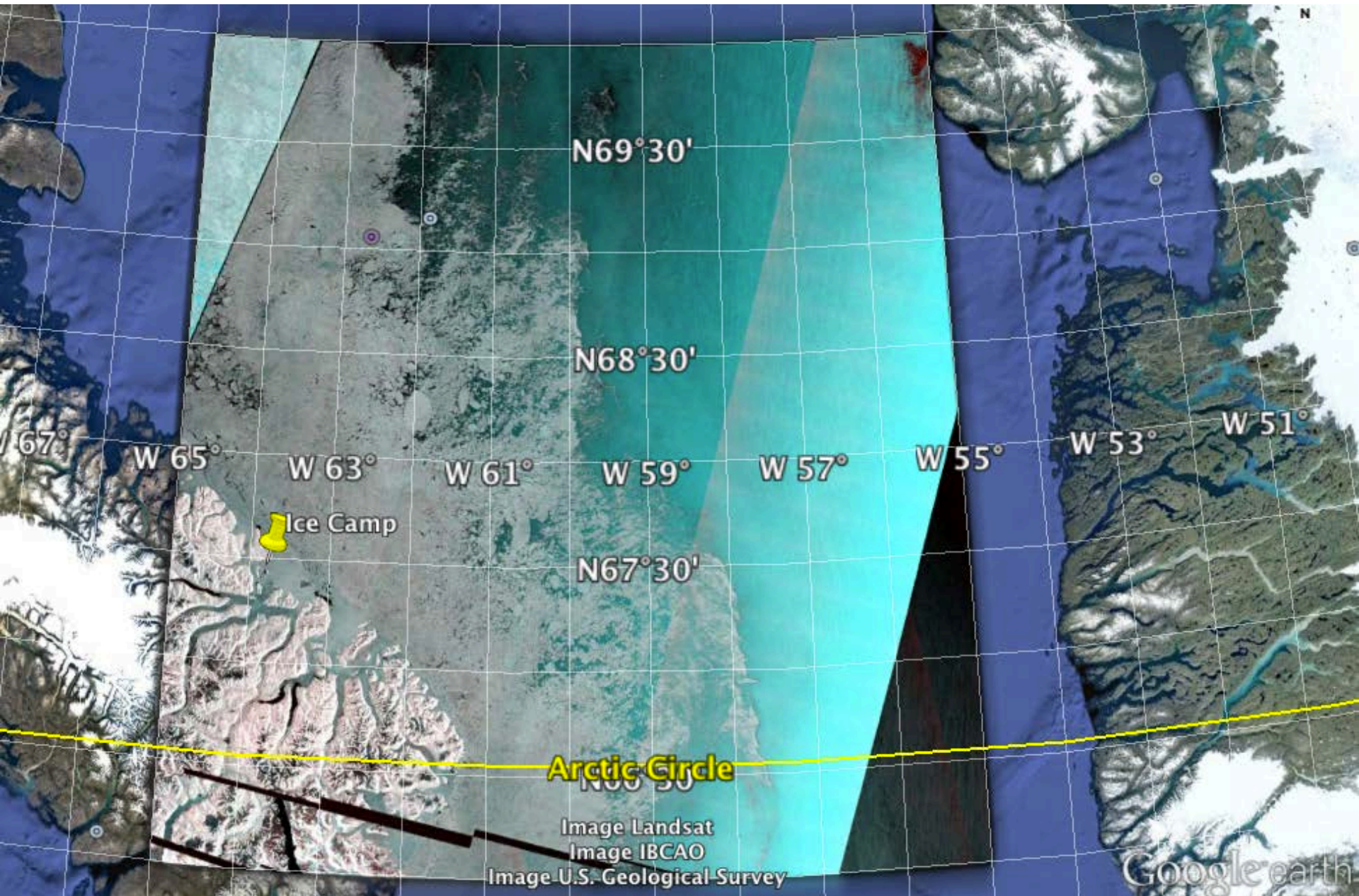
- The images S1-2016-07-09-68-60-100.tif (95 MB), S1-2016-07-09-69-60-100.tif (5 MB) and S1-2016-07-09-71-65-500.tif (39 MB) on <http://gliders.takuvik.ulaval.ca/ice/S12> contain new data. I would recommend downloading them.
- On the Sentinel-1 Polar View subset subset_transect_of_S1A_EW_GRDM_1SDH_20160709T212737_1E98_N_1.tif (10 MB), we see that the sea ice begins between -63.22°E and -62.47°E at the latitude of the transect of the ship (69.5°N).

July 9th MODIS chlorophyll-a concentration



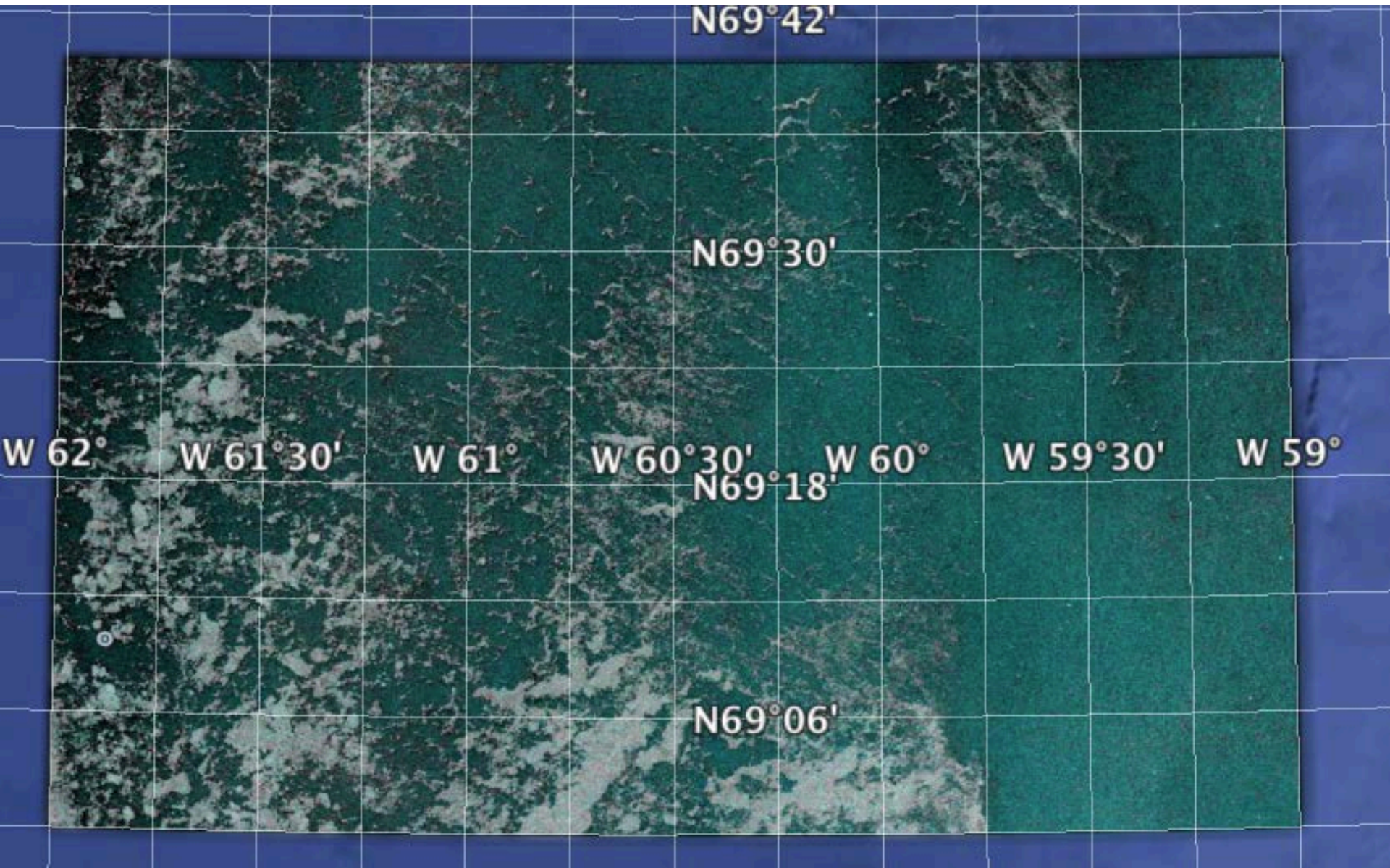
July 9th

Sentinel-1 (S1-2016-07-09-68-60-100.tif, 95 MB)



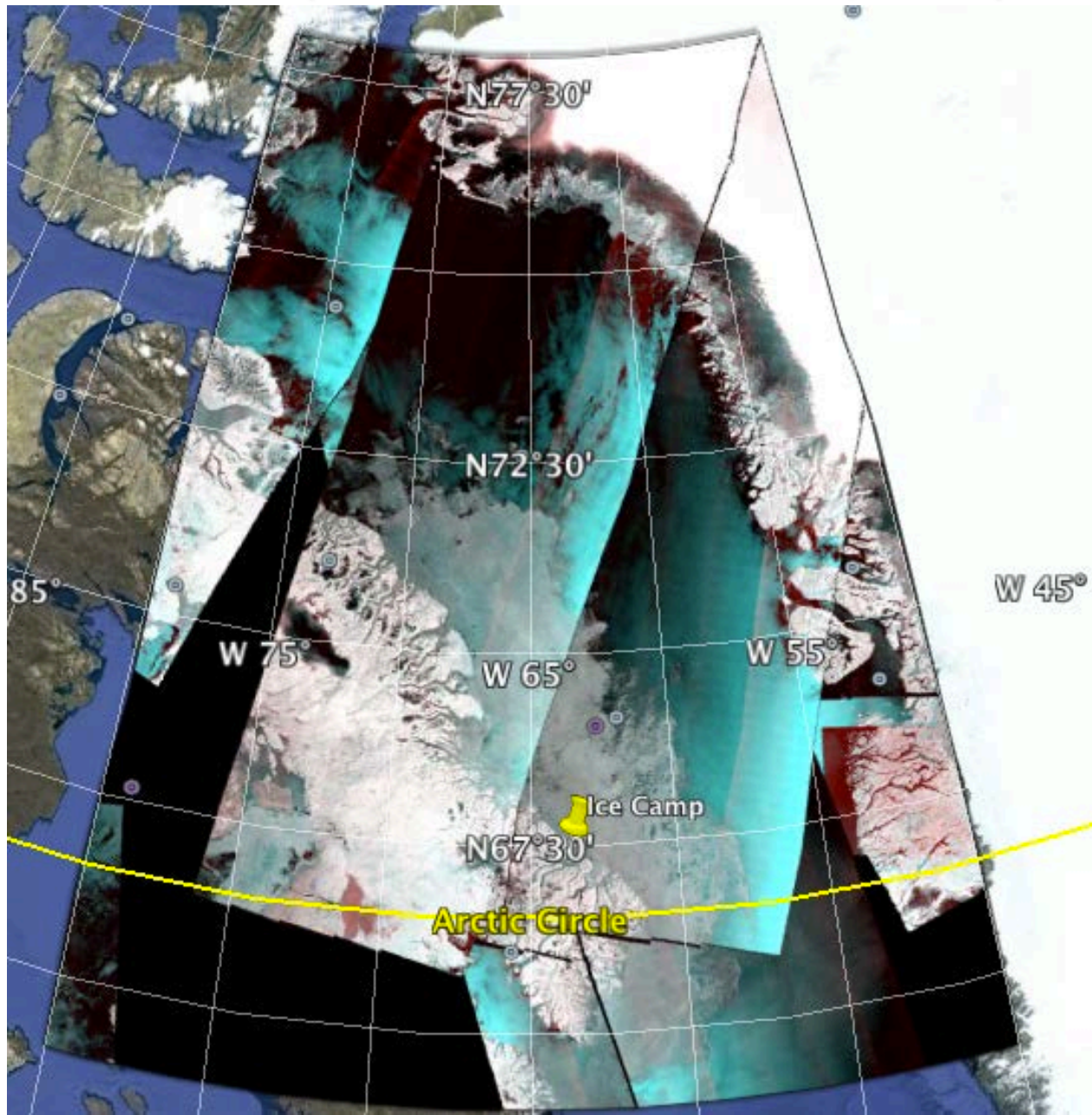
July 9th

Sentinel-1 (S1-2016-07-09-69-60-100.tif, 5 MB)



July 9th

Sentinel-1 (S1-2016-07-09-71-65-500.tif, 39 MB)



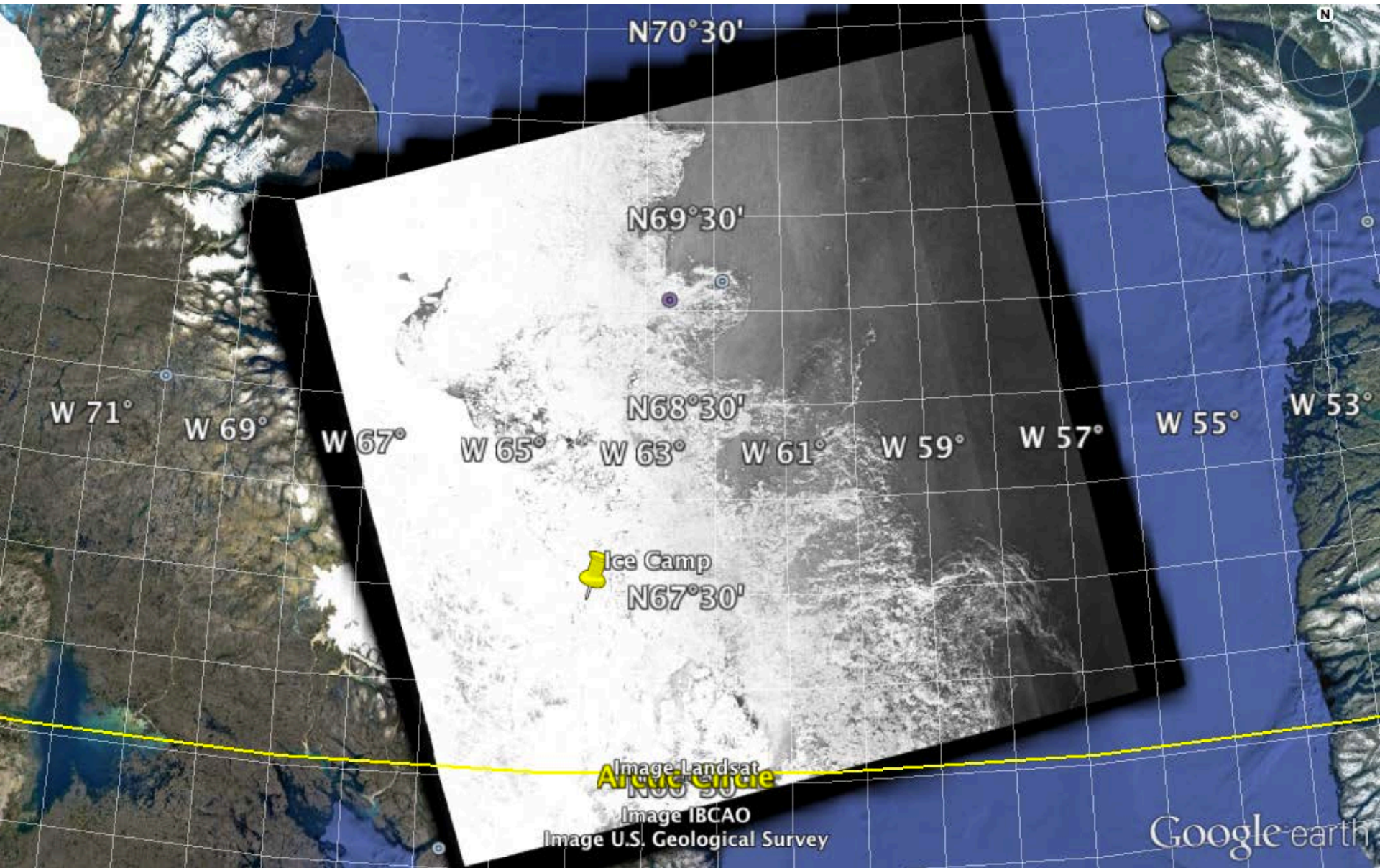
July 9th

Sentinel-2 (S2-2016-07-09-70-61-50.tif, 455 MB)



July 9th

Sentinel-1 from Polar View (S1A_EW_GRDM_1SDH_20160709T212737_1E98_N_1.tif, 250 MB)



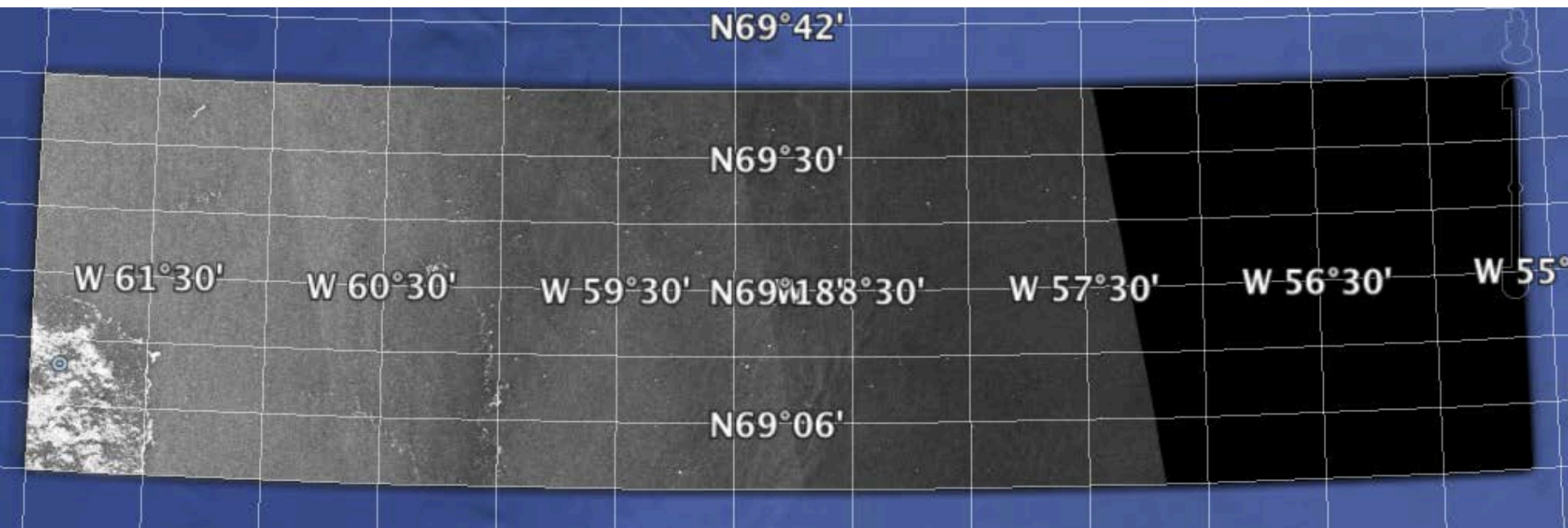
July 9th

Sentinel-1 from Polar View (subset_transect_of_S1A_EW_GRDM_1SDH_20160709T212737_1E98_N_1.tif, 10 MB)



July 9th

Sentinel-1 from Polar View (subset_gliders_of_S1A_EW_GRDM_1SDH_20160709T212737_1E98_N_1.tif, 10MB)



Green Edge Ice Camp

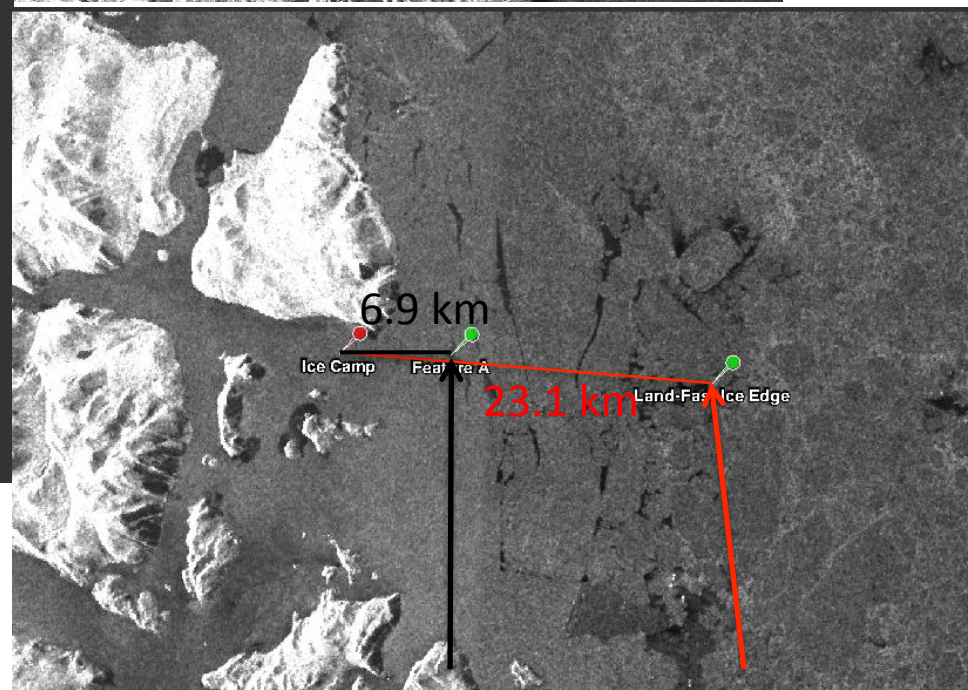
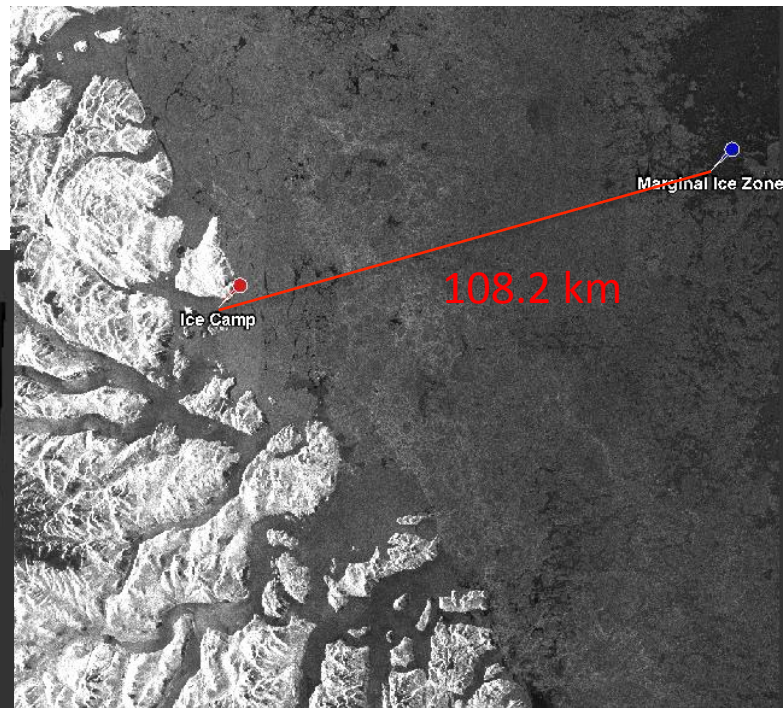
Comments

- On the Sentinel-1 image, we observe that the distance between the marginal ice zone and the ice camp is decreasing. This distance decreased from 294.0 km (May 5th) to 287.3 km (May 10th) to 248.4 km (May 17th) to 245.1 km (May 18th) to 252.3 km (May 22nd) to 233.4 km (May 29th) to 232.2 km (June 10th) to 235.4 km (June 15th) to 240.7 km (June 27th) to 188.9 km (July 4th) to 108.2 km (July 9th).
- We observe that the distance between the land-fast ice edge and the ice camp is varying. This distance was almost stable between 31.7 km and 35.0 km from April 4th to April 21st. Then, an important fall occurred from 31.7 km (April 21st) to 25.0 km (April 22nd). It was stable again between 24.3 km and 25.9 km from April 22nd to June 28th. Finally, it varied from 24.3 km (June 28th) to 22.1 km (July 4th) to 23.1 km (July 9th). Note that there are features in the land-fast ice between the ice camp and the land-fast ice edge. For example, Feature A is only at 6.9 km from the ice camp. My hypothesis is the following. I suppose that these features are streaks of open water in the land-fast ice edge. The land-fast ice is melting.

July 9th (MODIS)



July 9th (Sentinel-1)



Feature A Land-Fast Ice Edge