

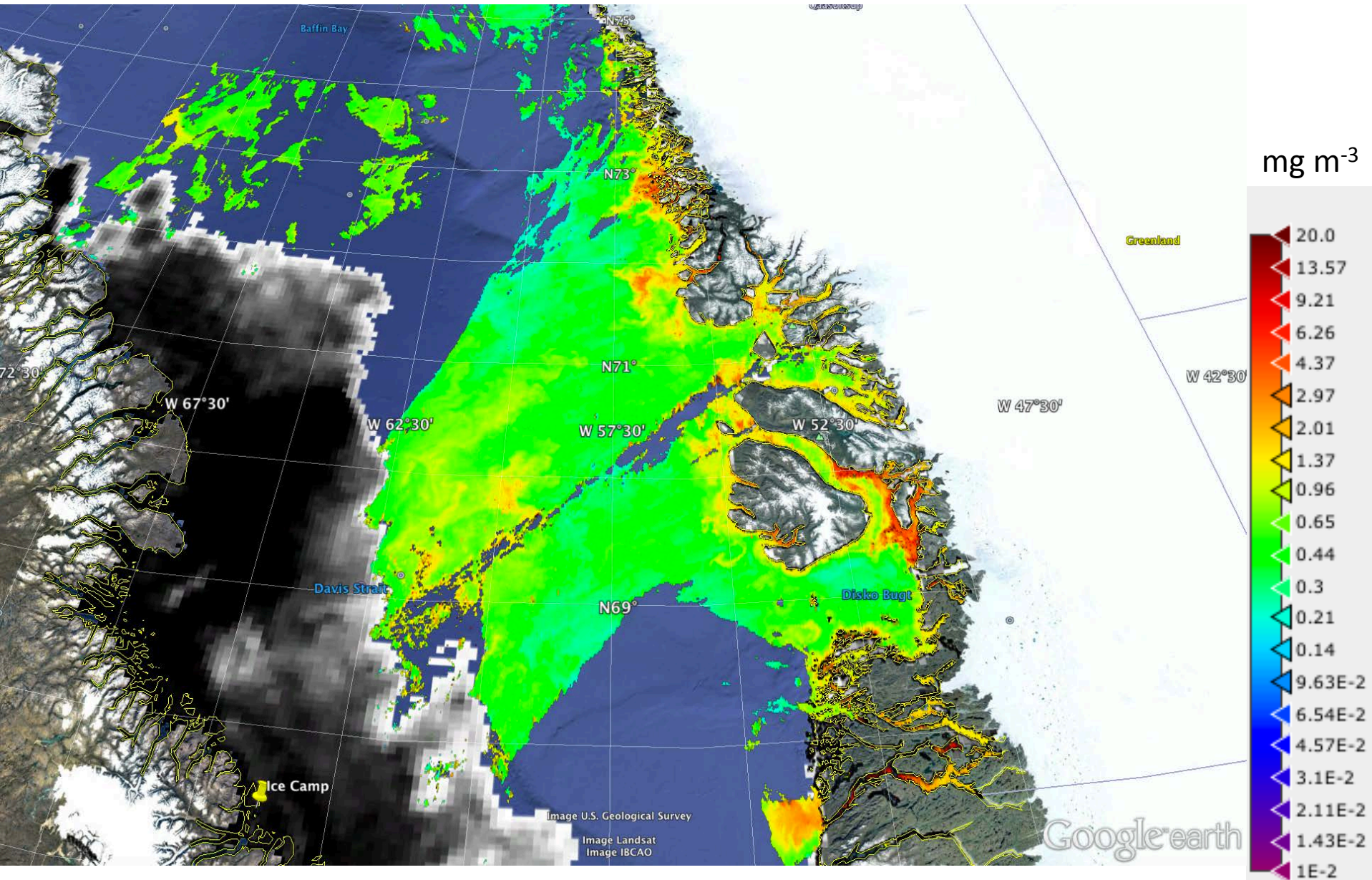
Green Edge Amundsen

# Comments

- The images S1-2016-07-07-68-60-100.tif (125 MB), S1-2016-07-07-69-60-100.tif (6 MB) and S1-2016-07-07-71-65-500.tif (41 MB) on <http://gliders.takuvik.ulaval.ca/ice/S12> contain new data. I would recommend downloading them.

July 7<sup>th</sup>

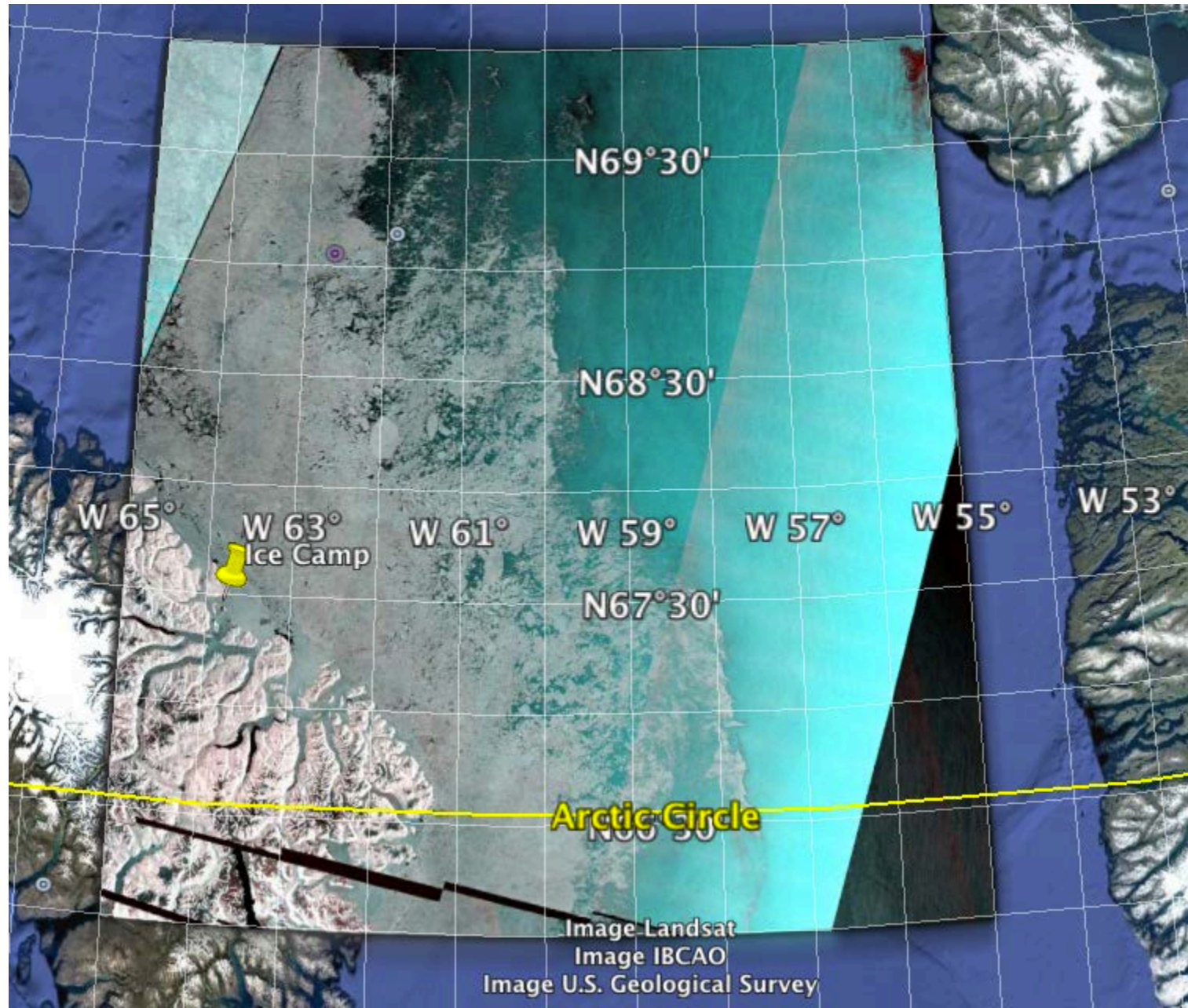
# AMSR2 sea-ice concentration and MODIS chlorophyll-a concentration





July 7<sup>th</sup>

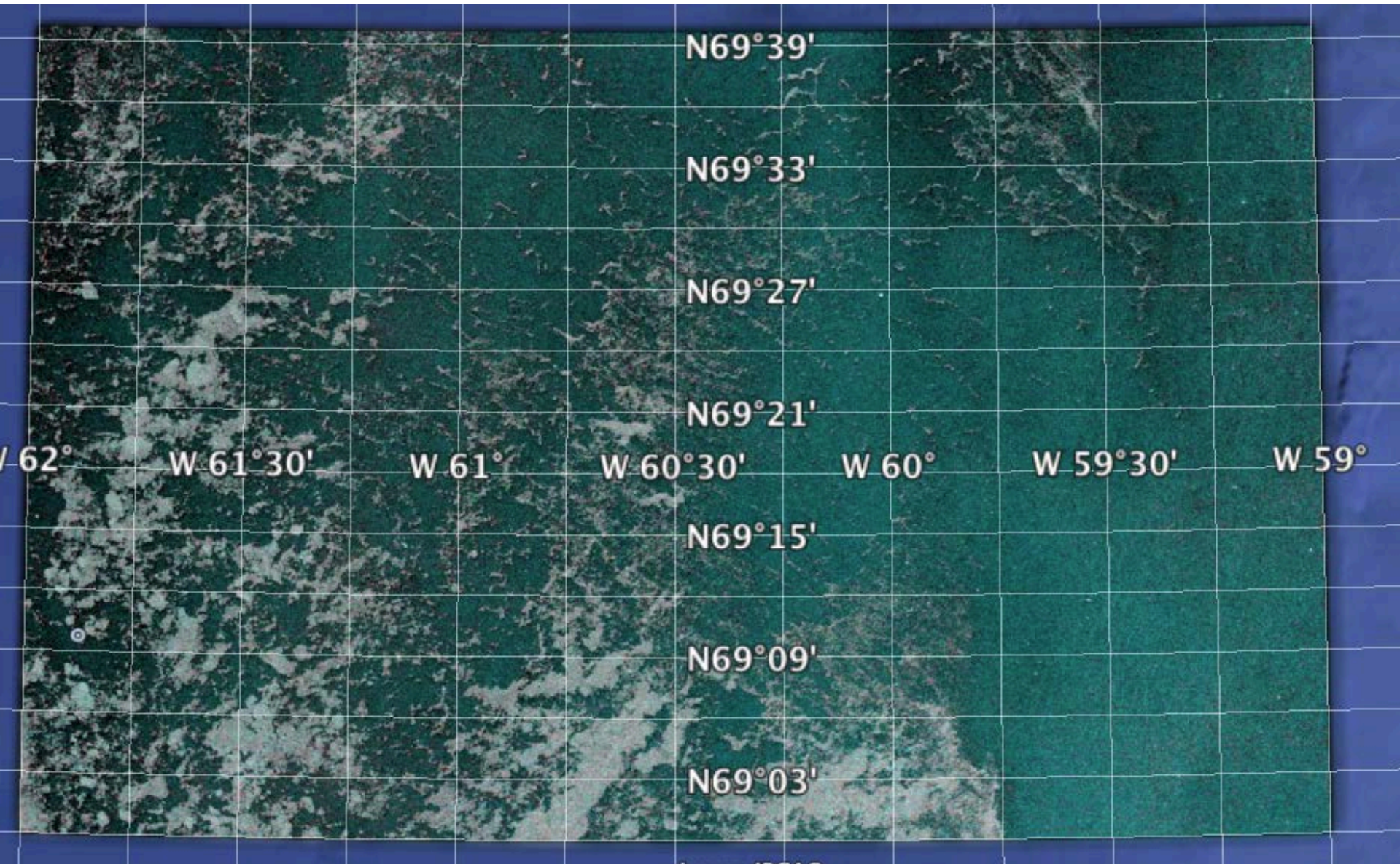
Sentinel-1 (S1-2016-07-07-68-60-100.tif, 125 MB)





July 7<sup>th</sup>

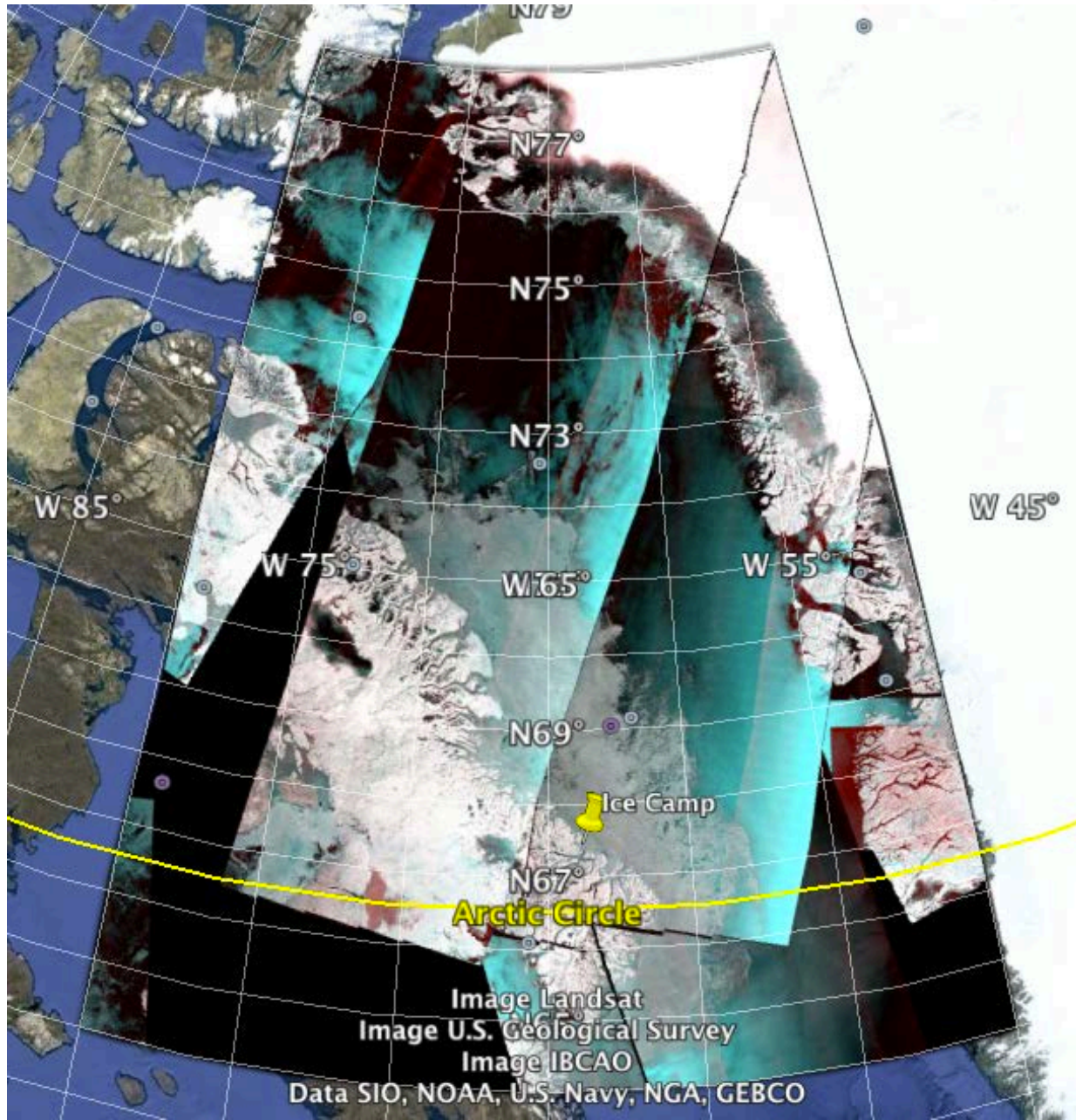
Sentinel-1 (S1-2016-07-07-69-60-100.tif, 6 MB)





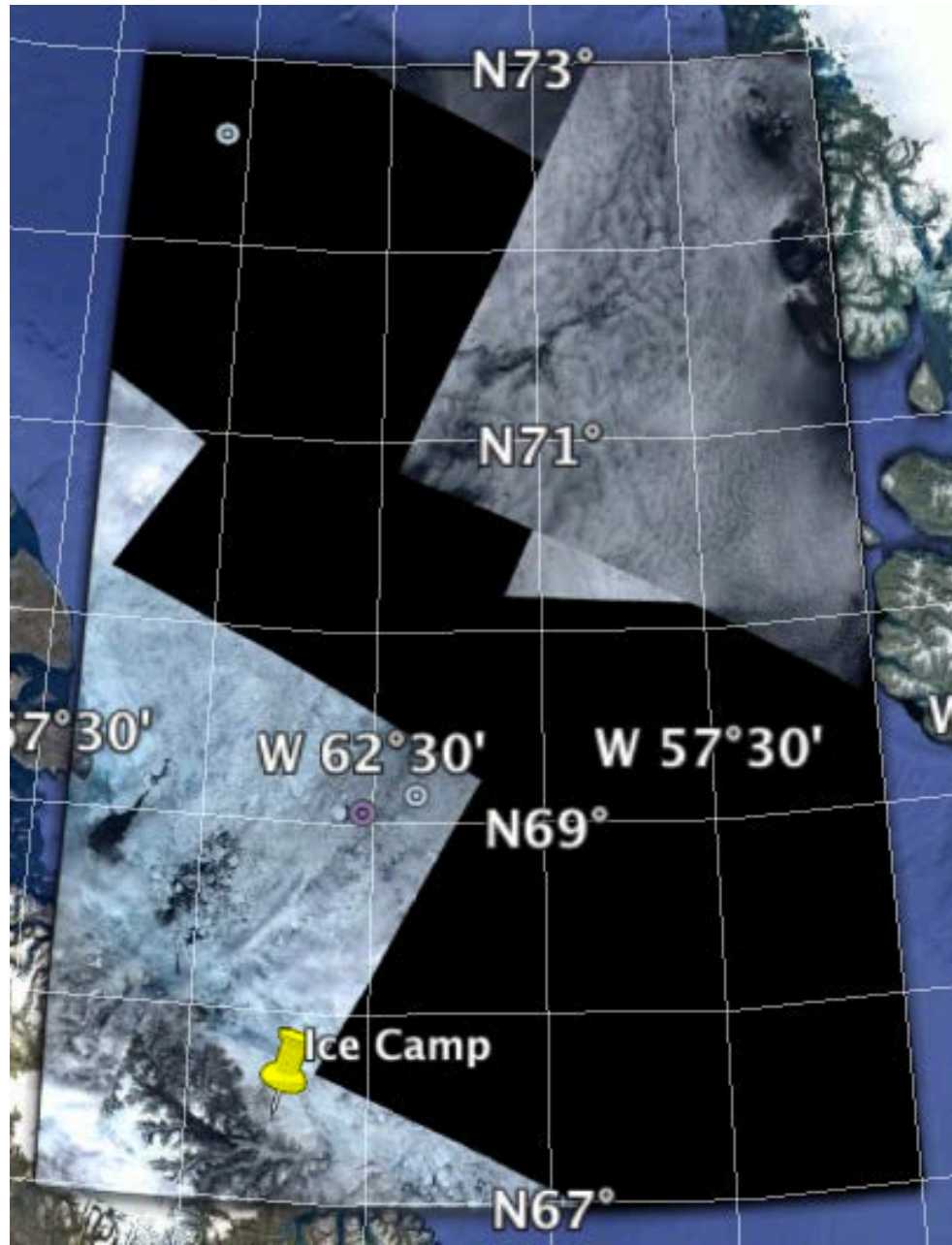
July 7<sup>th</sup>

Sentinel-1 (S1-2016-07-07-71-65-500.tif, 41 MB)



July 7<sup>th</sup>

Sentinel-2 (S2-2016-07-07-70-61-50.tif, 383 MB)



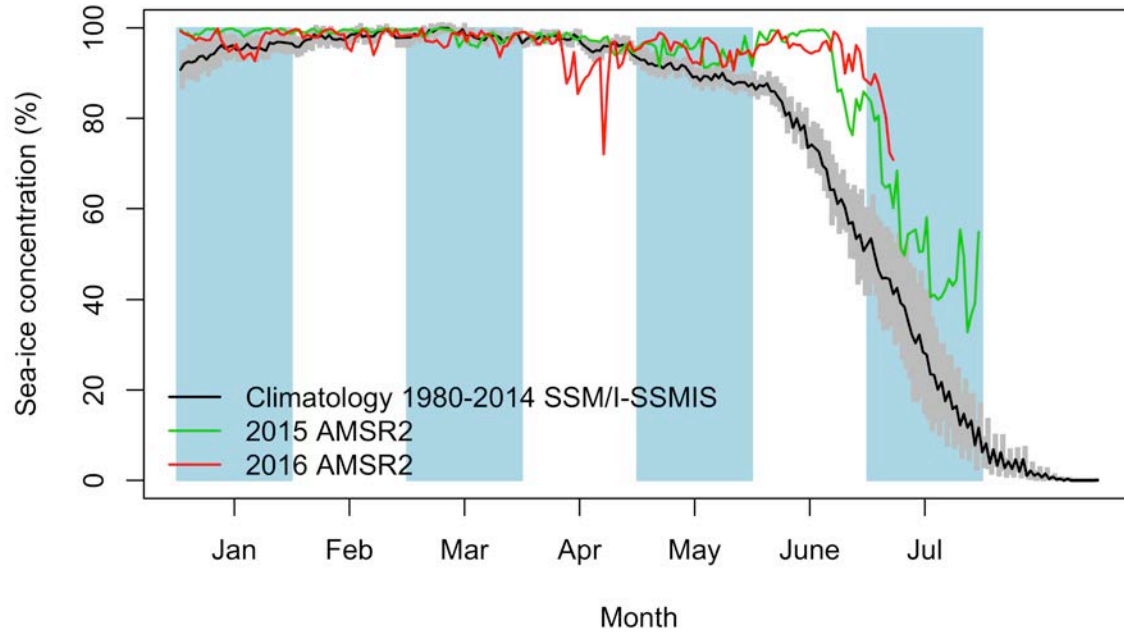
# Green Edge Ice Camp



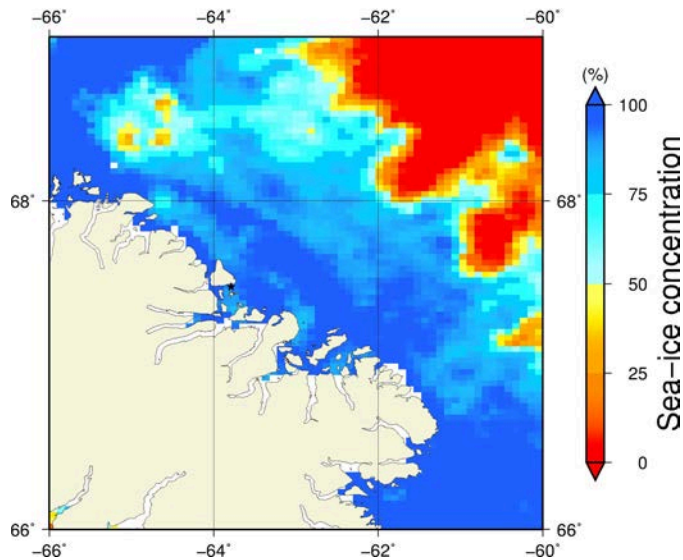
# Comments

- There is a new Landsat image.

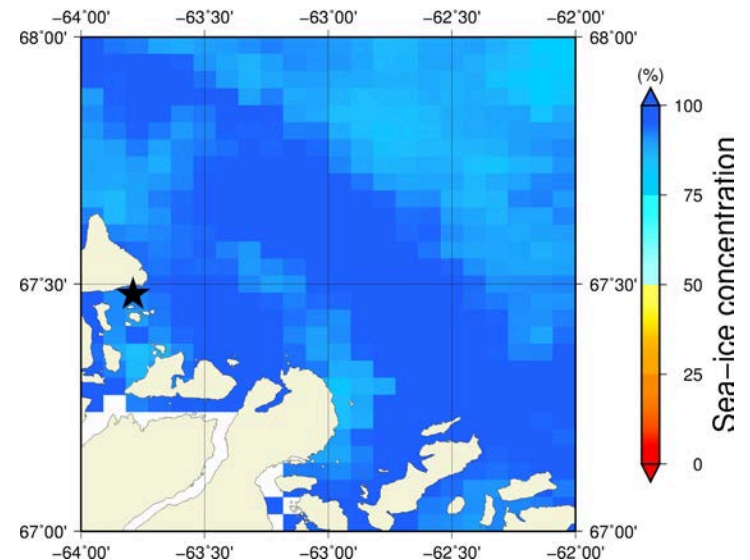
# July 7<sup>th</sup> (AMSR2) Sea-ice concentration in the region 66° to 69°N and -66° to -60°E



**Overview**

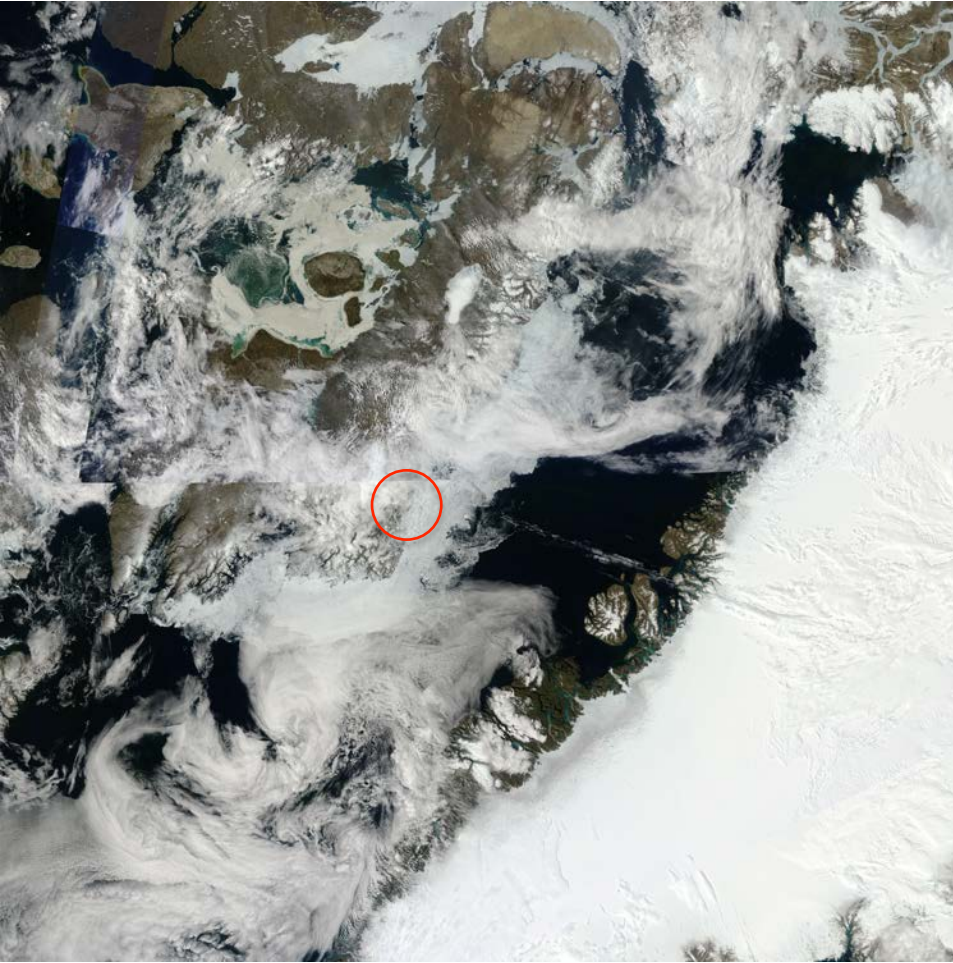


**Zoom**





July 7<sup>th</sup> (MODIS)



July 7<sup>th</sup> (Landsat)

