

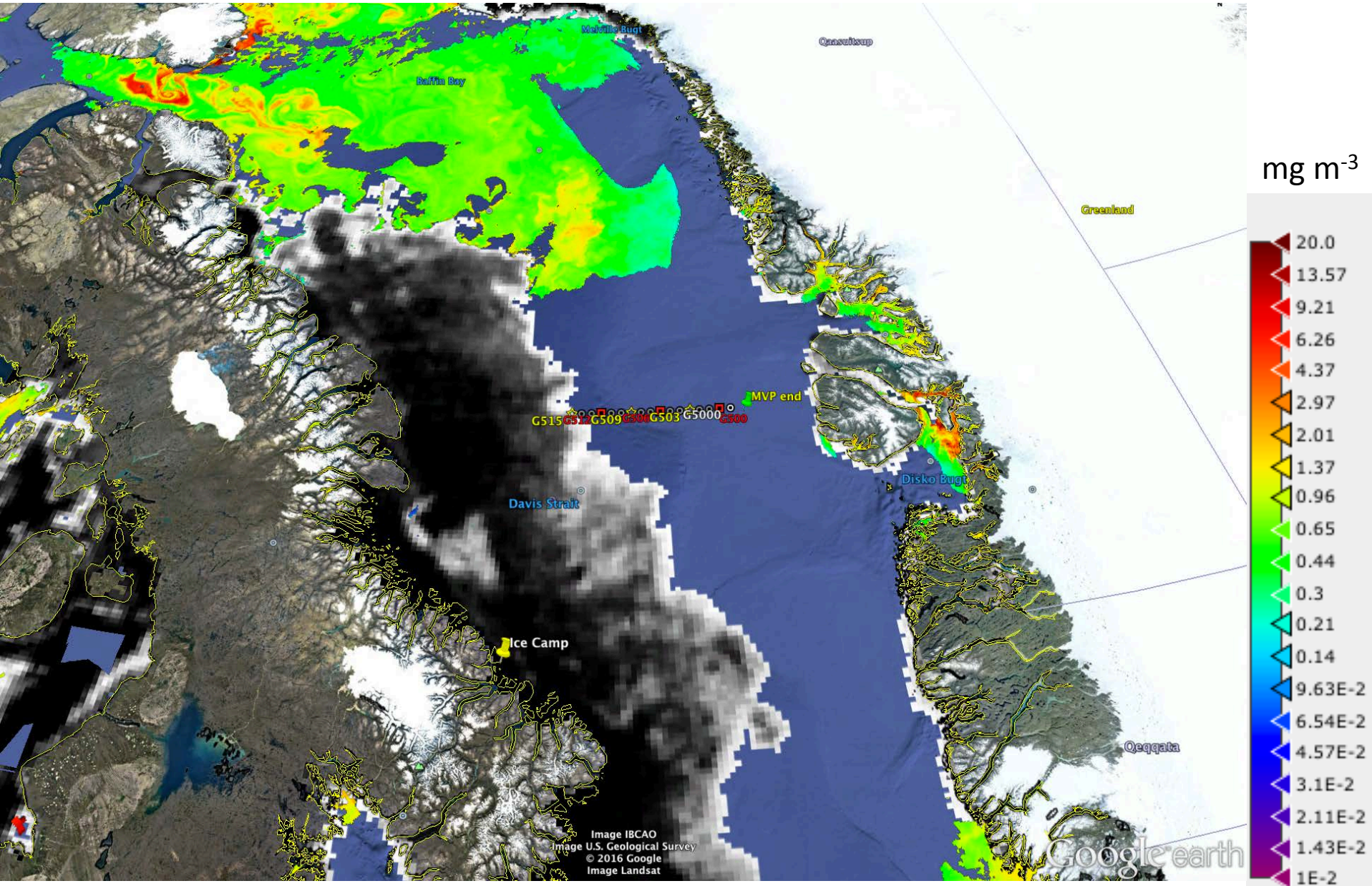
Green Edge Amundsen

Comments

- On the AMSR2 sea ice concentration of July 4th and MODIS chlorophyll-a concentration of July 5th screen capture, we observe a **bloom** North of station G510. The coordinates of the bloom are (70.127° N, -60.672° E). See A2016187074500_L2_LAC_OC.kmz (0.464 MB) at <https://goo.gl/SwM77o>.
- There are no new images in the mosaics from <http://gliders.takuvik.ulaval.ca/ice/S12> since July 2nd. I would not recommend downloading them if you downloaded those of July 2nd.
- I would recommend downloading instead a regional subset of a Sentinel-1 image from Polar View: subset_G500_of_S1A_EW_GRDM_1SDH_20160704T211923_7564_N_1.tif (2 MB) or subset_gliders_of_S1A_EW_GRDM_1SDH_20160704T211923_7564_N_1.tif (15 MB) at <https://goo.gl/SwM77o>. Note that the G500 transect is documented only East of -61° E on these images.
- The west part of the transect is documented in subset_G500_of_S1A_EW_GRDM_1SDH_20160704T212023_CB09_N_1.tif (1 MB) or subset_gliders_of_S1A_EW_GRDM_1SDH_20160704T212023_CB09_N_1.tif (8 MB) at <https://goo.gl/SwM77o>.

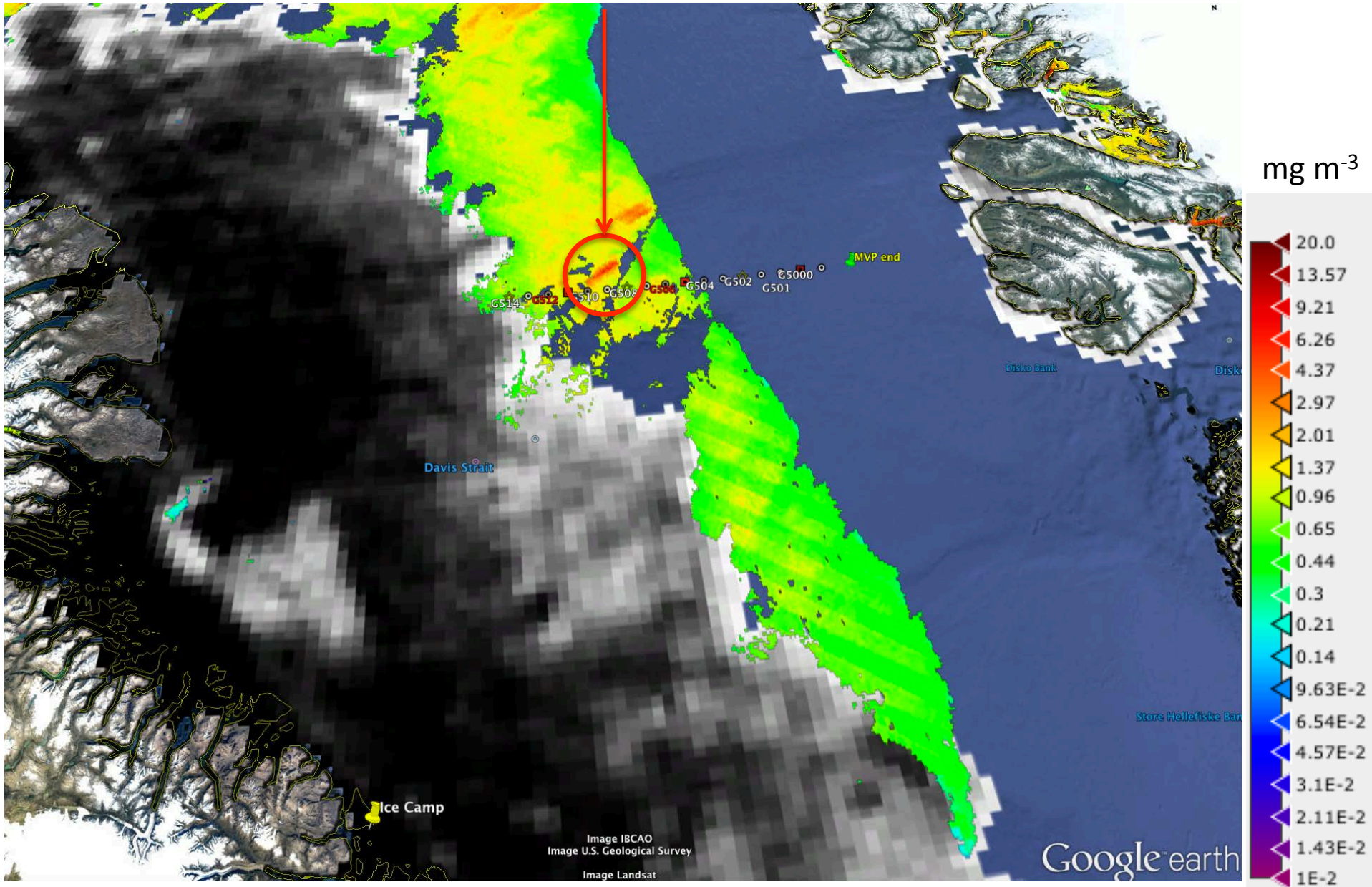
July 4th

AMSR2 sea-ice concentration and MODIS chlorophyll-a concentration



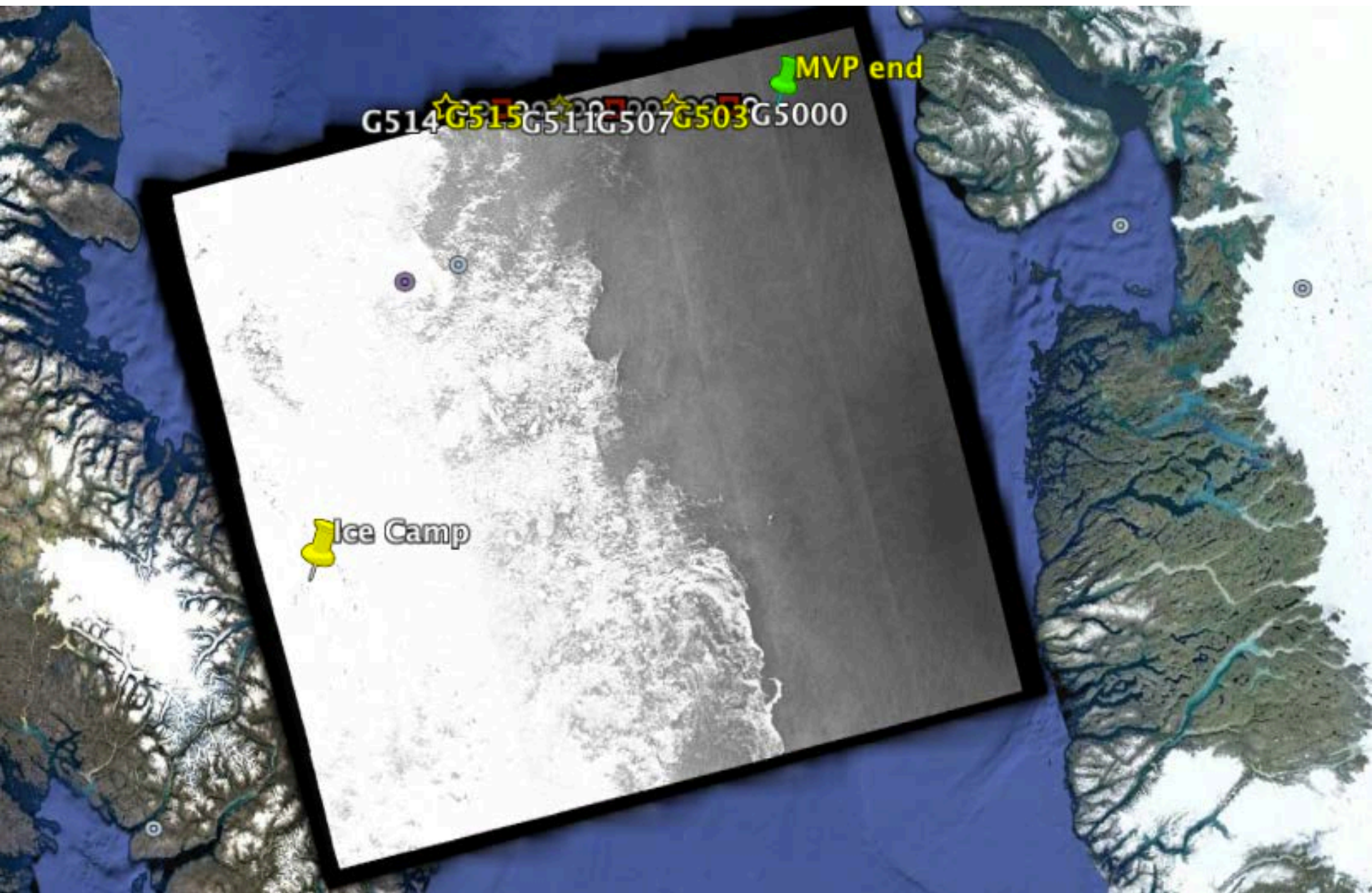
AMSR2 sea-ice concentration of July 4th and MODIS chlorophyll-a concentration of July 5th

Bloom



July 4th

Sentinel-1 from Polar View (S1A_EW_GRDM_1SDH_20160704T211923_7564_N_1.tif, 235 MB)



July 4th

Sentinel-1 from Polar View (subset_G500_of_S1A_EW_GRDM_1SDH_20160704T211923_7564_N_1.tif, 2 MB)



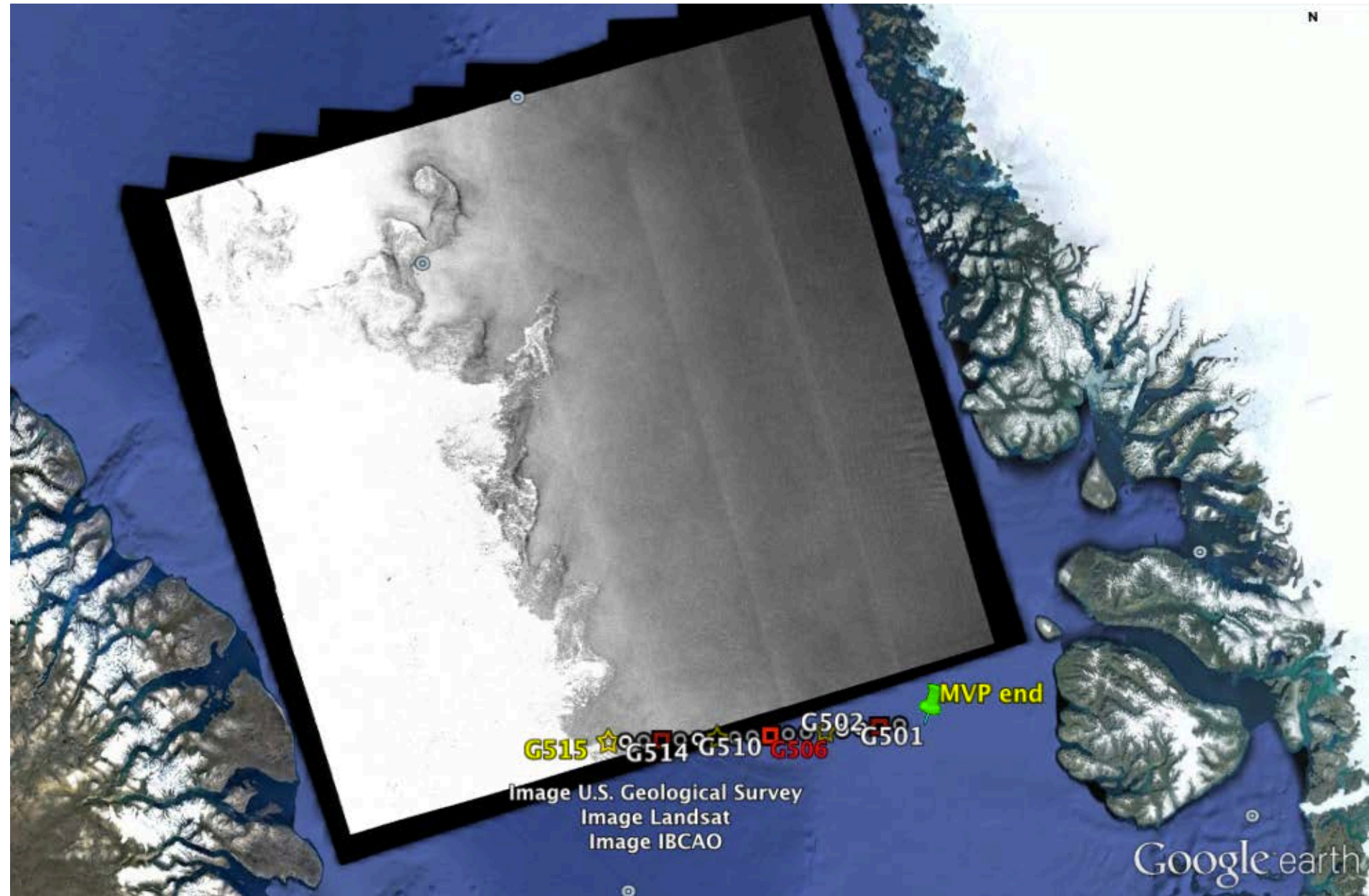
July 4th

Sentinel-1 from Polar View (subset_gliders_of_S1A_EW_GRDM_1SDH_20160704T211923_7564_N_1.tif, 15 MB)



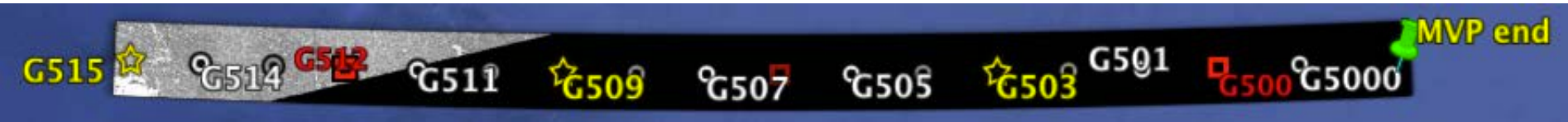
July 4th

Sentinel-1 from Polar View (S1A_EW_GRDM_1SDH_20160704T212023_CB09_N_1.tif, 238 MB)



July 4th

Sentinel-1 from Polar View (subset_G500_of_S1A_EW_GRDM_1SDH_20160704T212023_CB09_N_1.tif, 1 MB)



July 4th

Sentinel-1 from Polar View (subset_gliders_of_S1A_EW_GRDM_1SDH_20160704T212023_CB09_N_1.tif, 8 MB)



July 4th

Sentinel-1 from Polar View (S1A_EW_GRDM_1SDH_20160704T211923_7564_N_1.tif and S1A_EW_GRDM_1SDH_20160704T212023_CB09_N_1.tif)

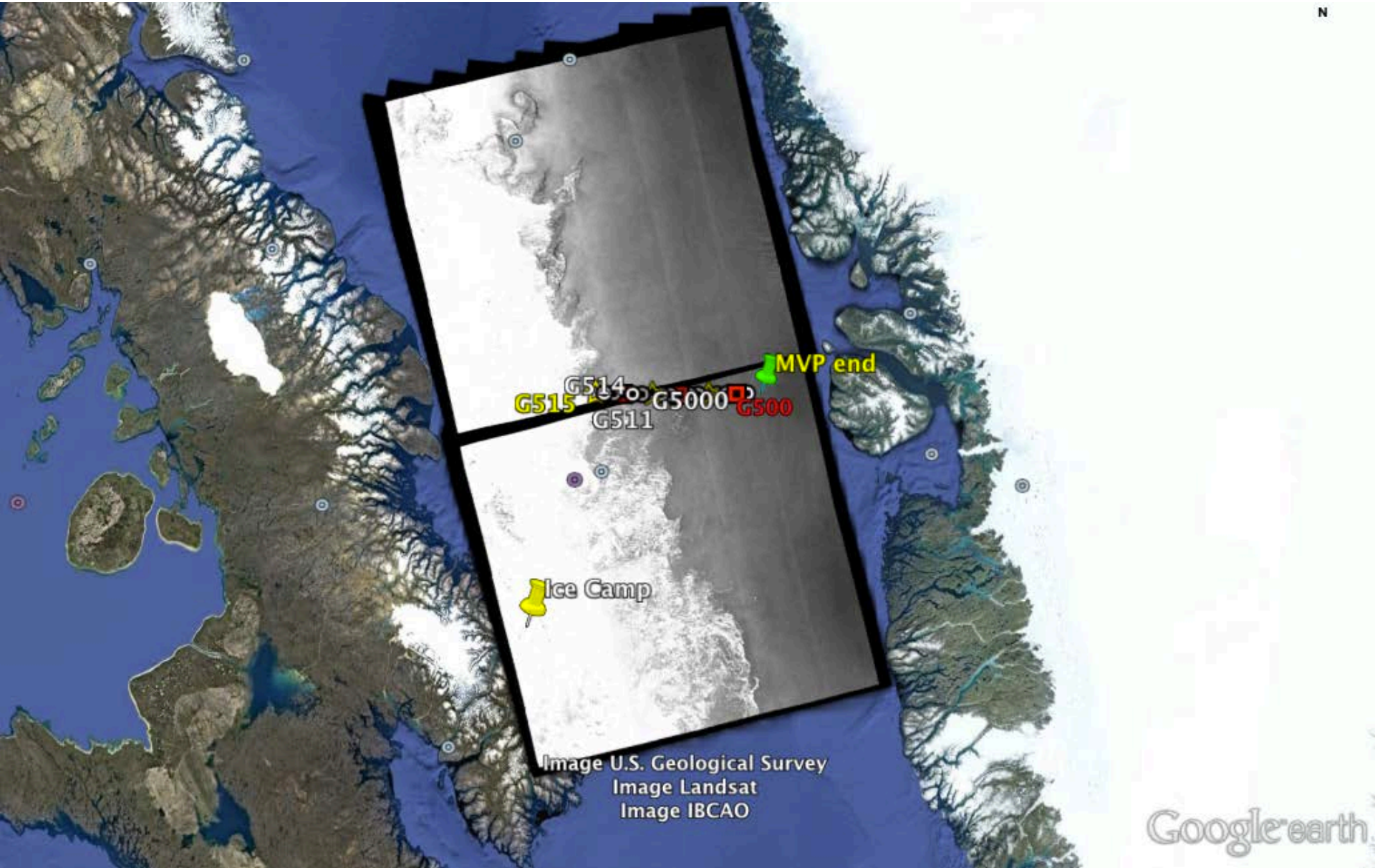


Image U.S. Geological Survey
Image Landsat
Image IBCAO

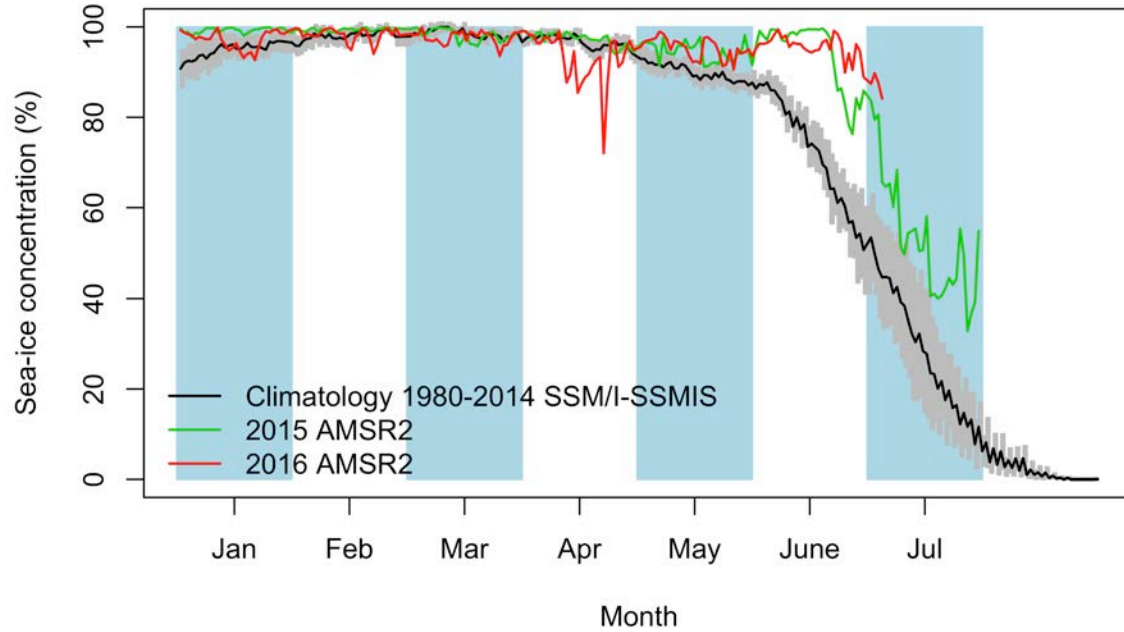
Google earth

Green Edge Ice Camp

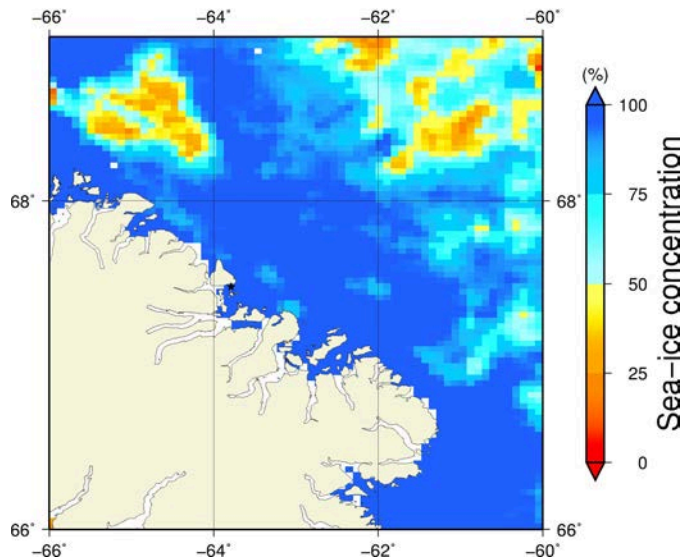
Comments

- On both MODIS and Sentinel-1 zoom images, we observe a zone (Zone A) near the land-fast ice edge where the land-fast ice edge is dislocating.
- On the Sentinel-1 image, we observe that the distance between the marginal ice zone and the ice camp is decreasing. This distance decreased from 294.0 km (May 5th) to 287.3 km (May 10th) to 248.4km (May 17th) to 245.1 km (May 18th) to 252.3 km (May 22nd) to 233.4 km (May 29th) to 232.2 km (June 10th) to 235.4 km (June 15th) to 240.7 km (June 27th) to 188.9 km (July 4th).

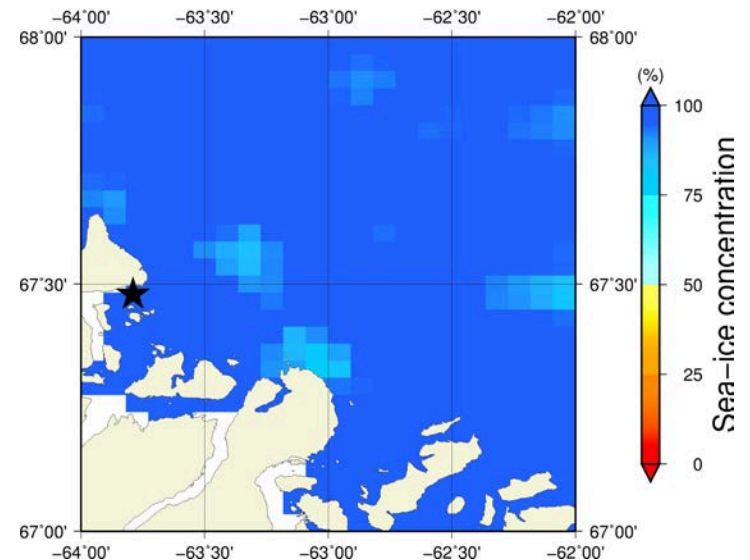
July 4th (AMSR2) Sea-ice concentration in the region 66° to 69°N and -66° to -60°E



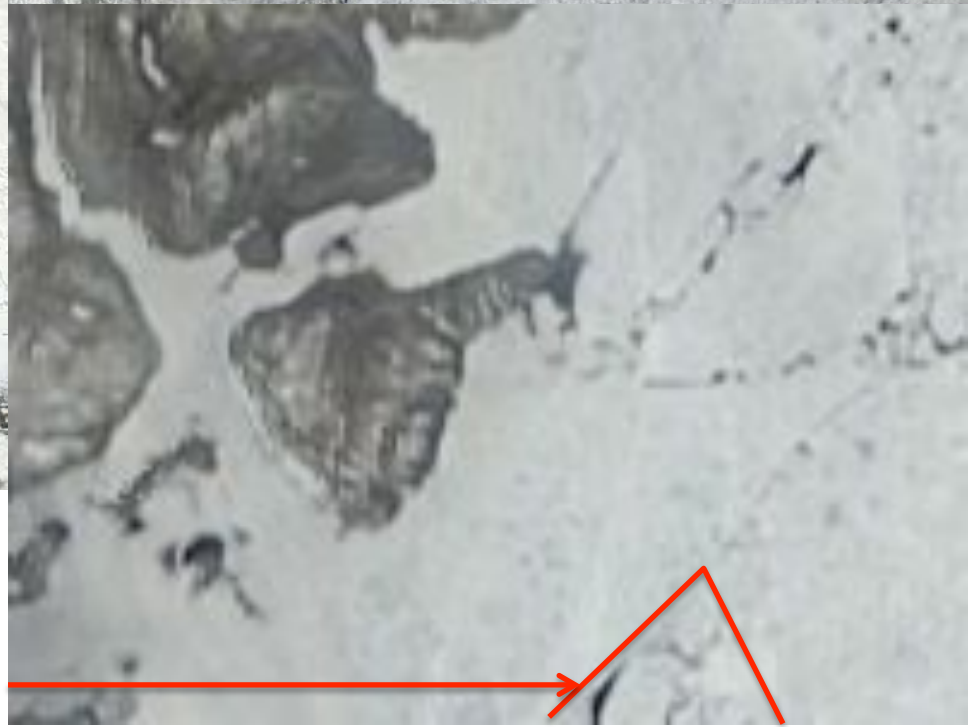
Overview



Zoom

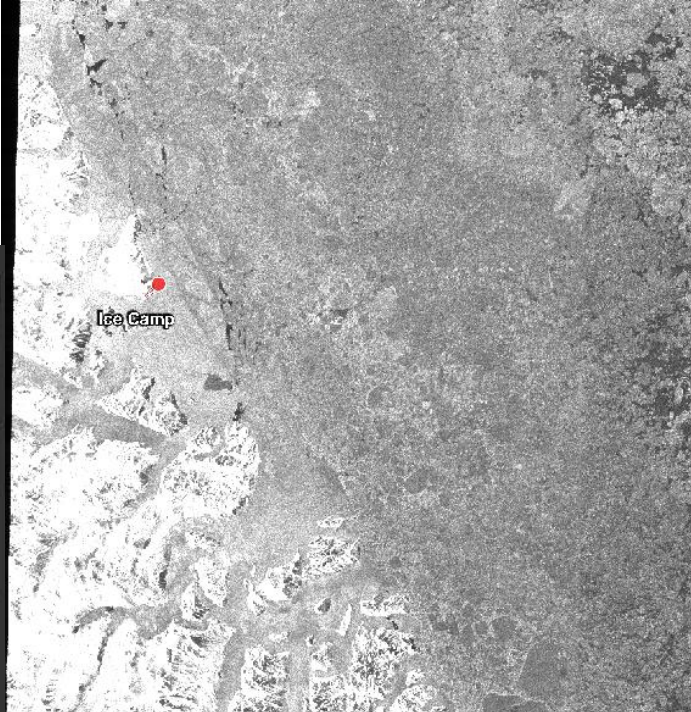
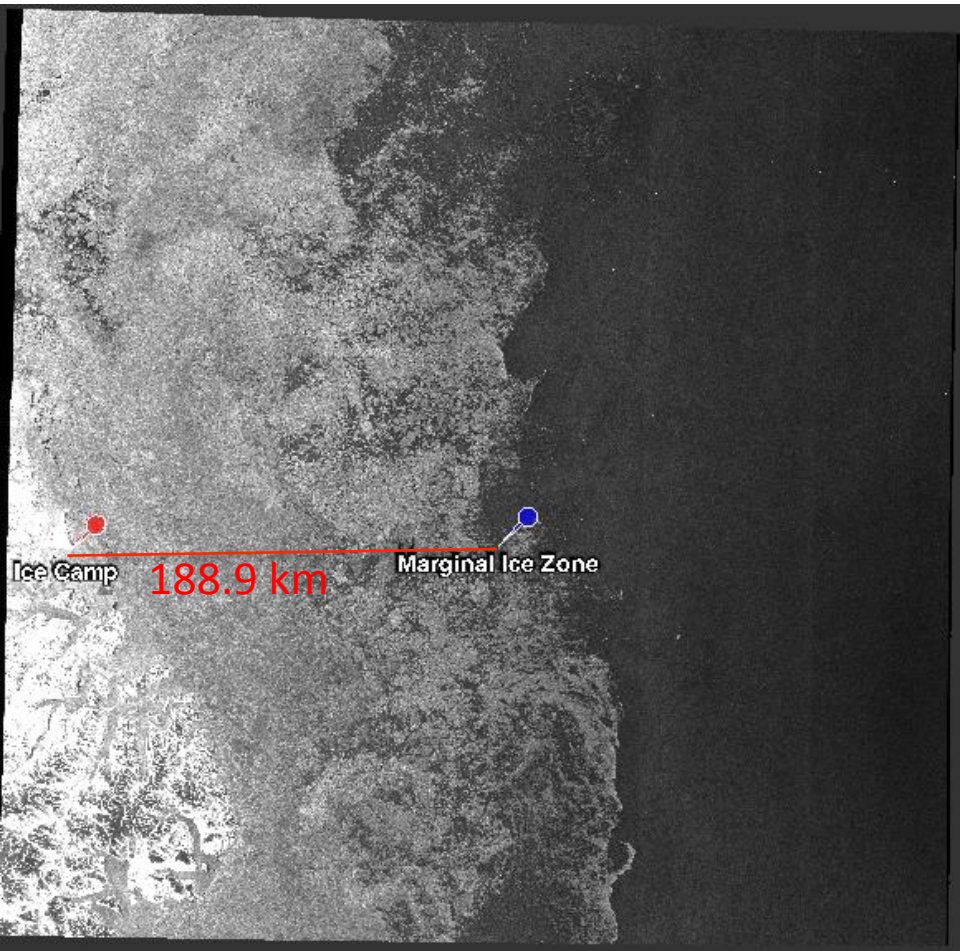


July 4th (MODIS)



Zone A

July 4th (Sentinel-1)



Zone A

