

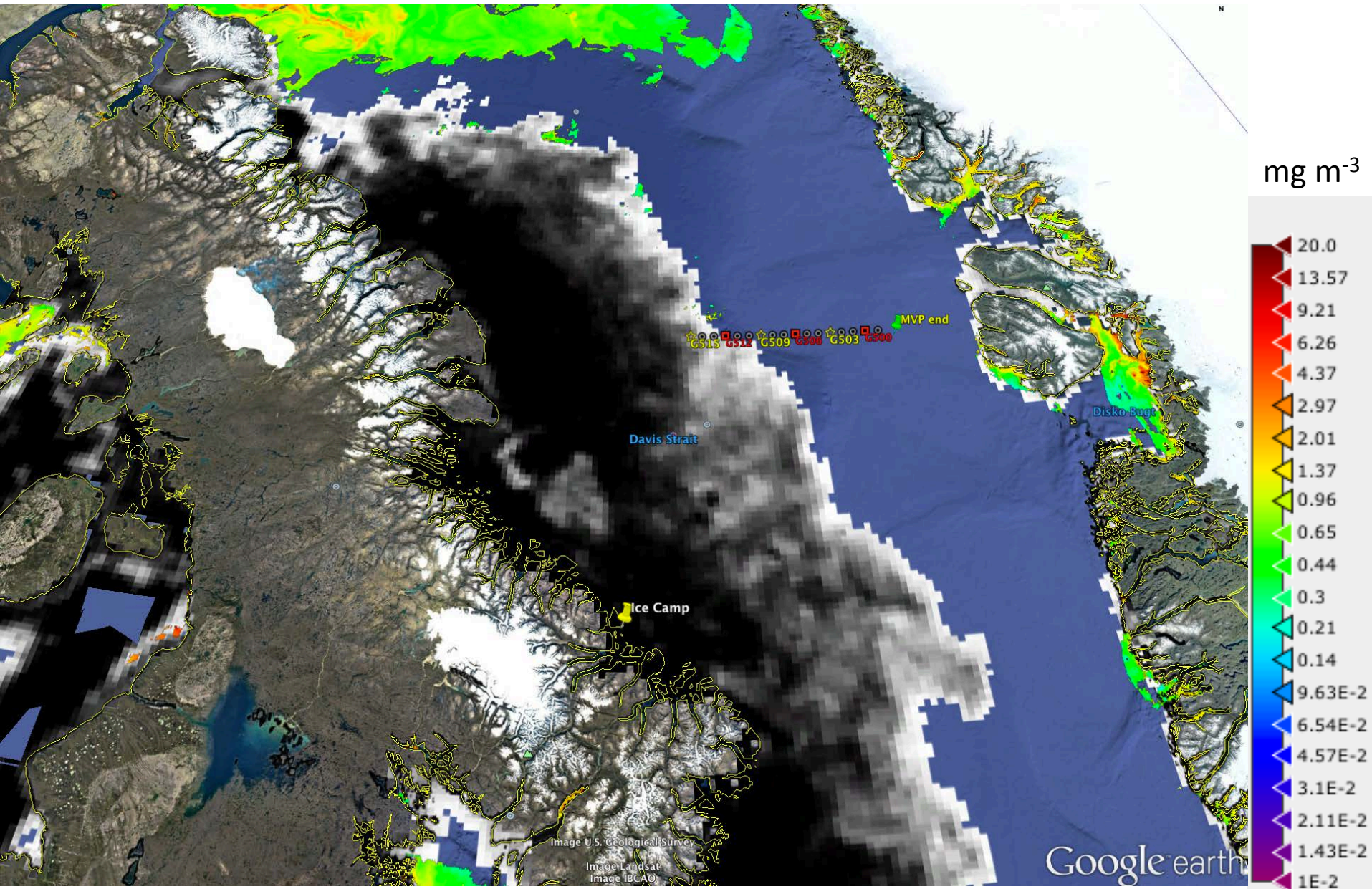
Green Edge Amundsen

Comments

- There are no new images in the mosaics from <http://gliders.takuvik.ulaval.ca/ice/S12>. I would not recommend downloading them if you downloaded those of July 2nd.
- I would recommend downloading instead a regional subset of a Sentinel-1 image from Polar View: subset_G500_of_S1A_EW_GRDM_1SDH_20160702T213551_D587_N_1.tif (1 MB) or subset_gliders_of_S1A_EW_GRDM_1SDH_20160702T213551_D587_N_1.tif (13 MB). Note that these images only cover west of -59°42' E (near station G507). These images are not clear too. Sentinel-1 images from Polar View are not clear in Google Earth Pro sometimes. I don't know what proportion of the not clear aspect of the images is due to that and what proportion of the not clear aspect is due to the melting ice.

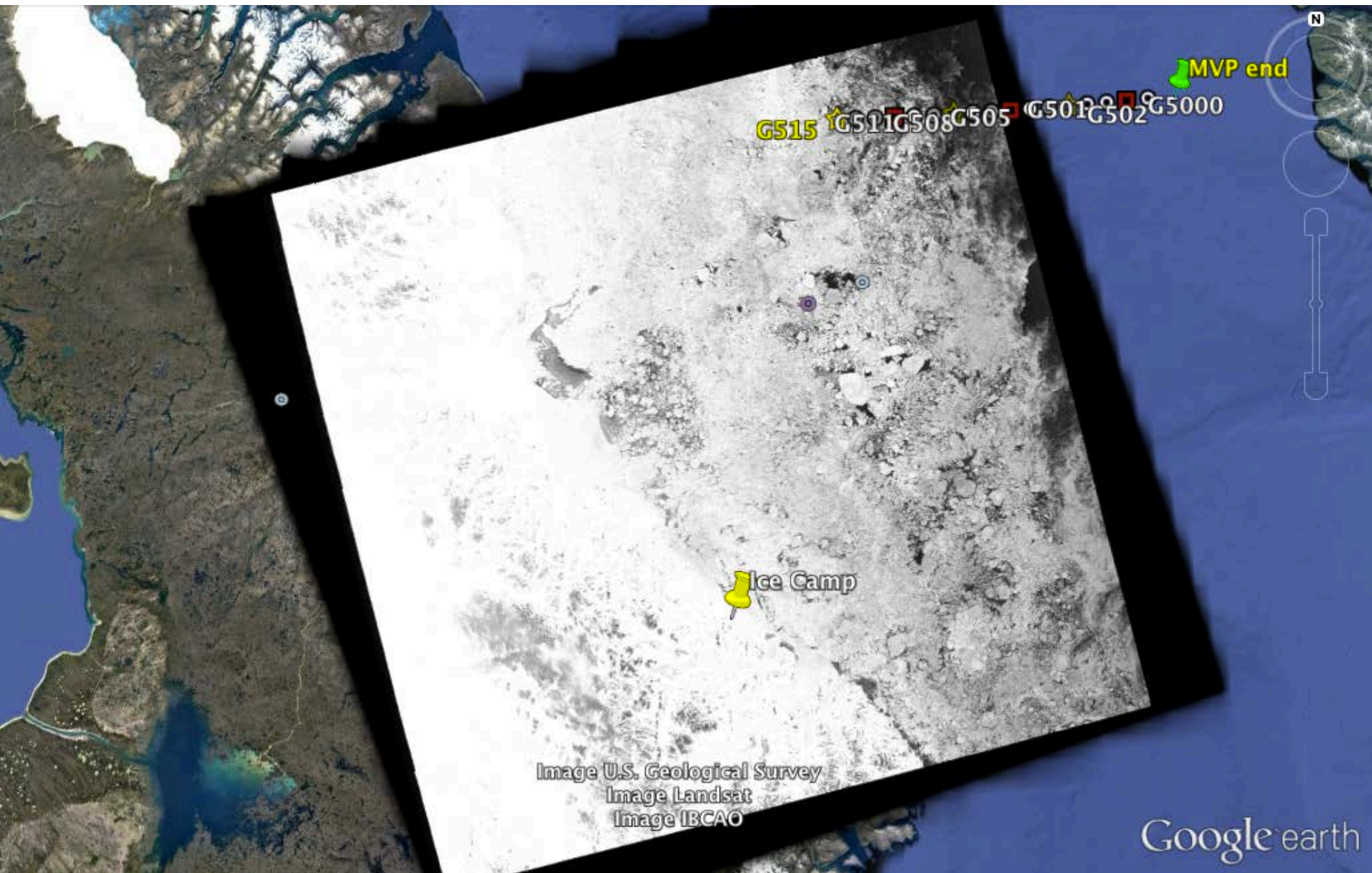
July 3rd

AMSR2 sea-ice concentration and MODIS chlorophyll-a concentration



July 2nd

Sentinel-1 from Polar View (S1A_EW_GRDM_1SDH_20160702T213551_D587_N_1.tif, 267 MB)



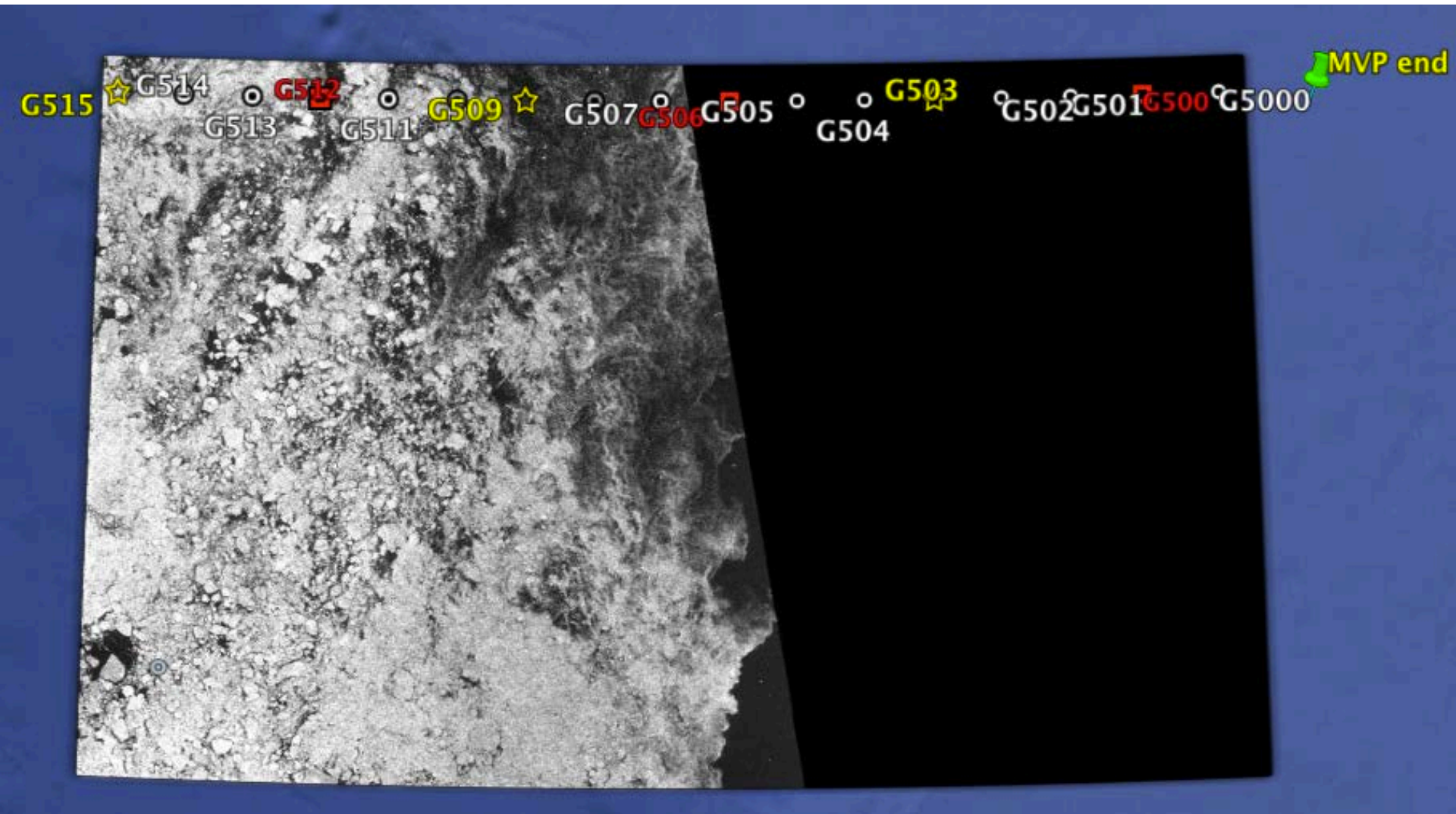
July 2nd

Sentinel-1 from Polar View (subset_G500_of_S1A_EW_GRDM_1SDH_20160702T213551_D587_N_1.tif, 1 MB)



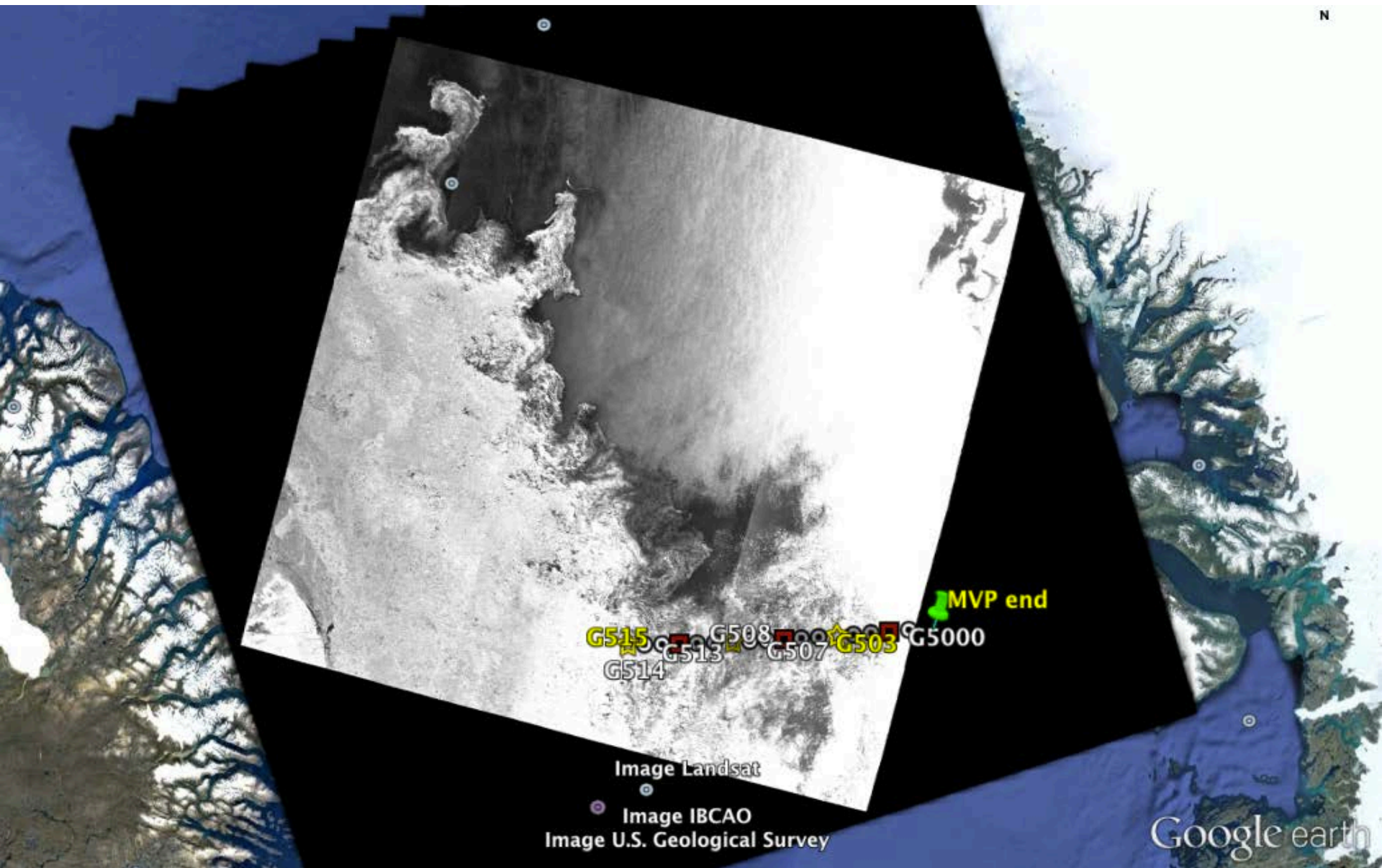
July 2nd

Sentinel-1 from Polar View (subset_gliders_of_S1A_EW_GRDM_1SDH_20160702T213551_D587_N_1.tif, 13 MB)



July 3rd

Sentinel-1 from Polar View (S1A_EW_GRDM_1SDH_20160703T105647_8CA9_N_1.tif, 413 MB)



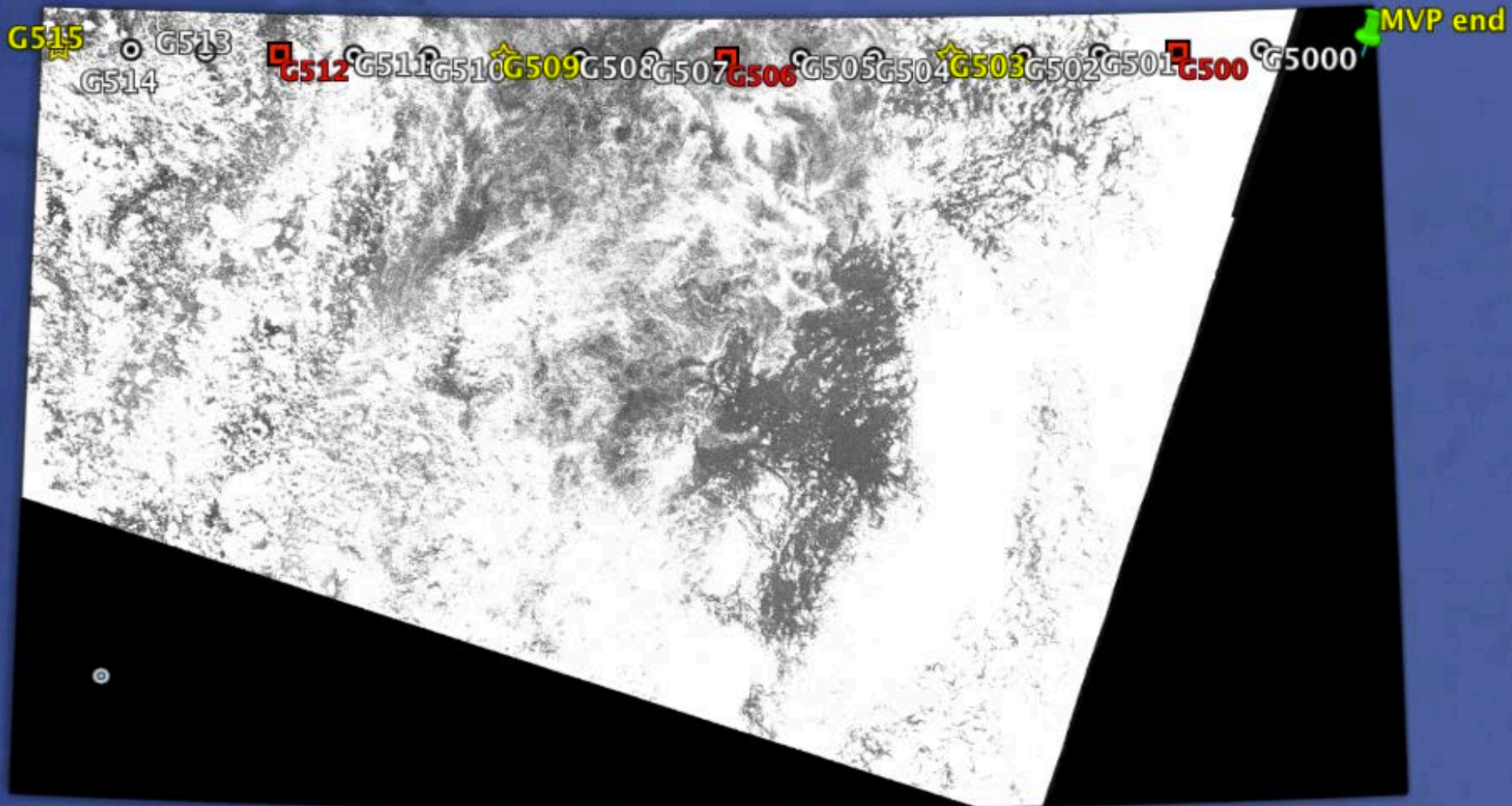
July 3rd

Sentinel-1 from Polar View (subset_G500_of_S1A_EW_GRDM_1SDH_20160703T105647_8CA9_N_1.tif, 1 MB)



July 3rd

Sentinel-1 from Polar View (subset_gliders_of_S1A_EW_GRDM_1SDH_20160703T105647_8CA9_N_1.tif, 11MB)

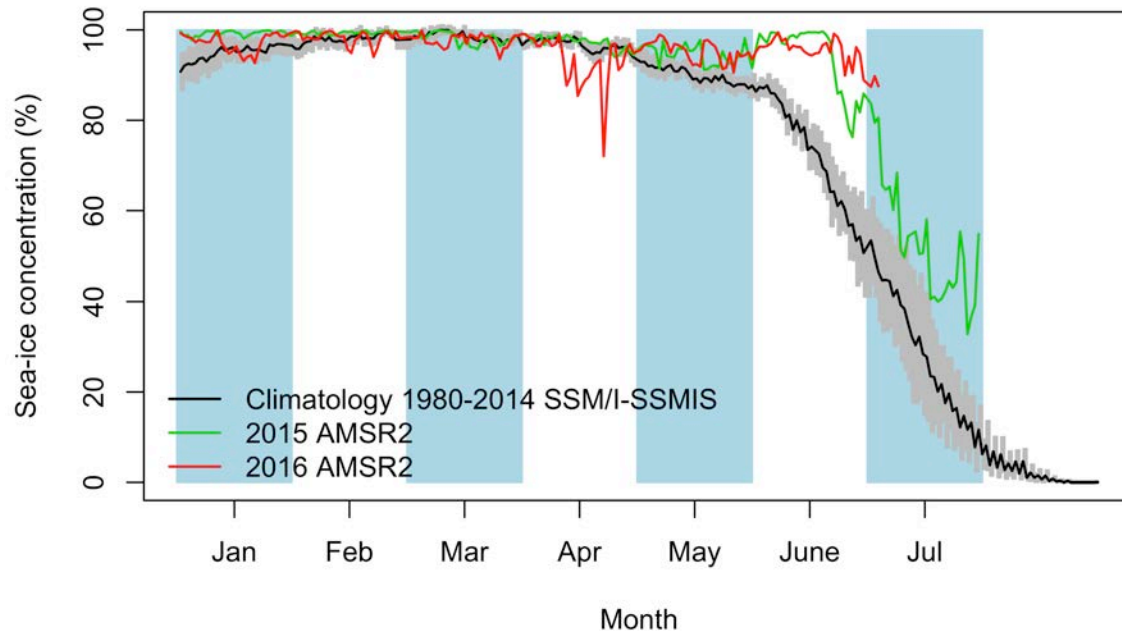


Green Edge Ice Camp

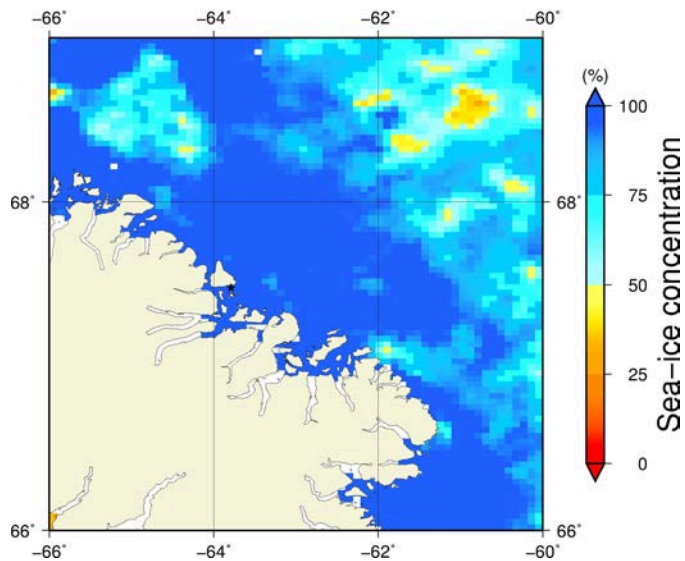
Comments

- There are black features in the land-fast ice on the Sentinel-1 image. Are they open waters forming in the land-fast ice near the land-fast ice edge? The distance between the ice camp and one of these features (Feature A) is 17.7 km.

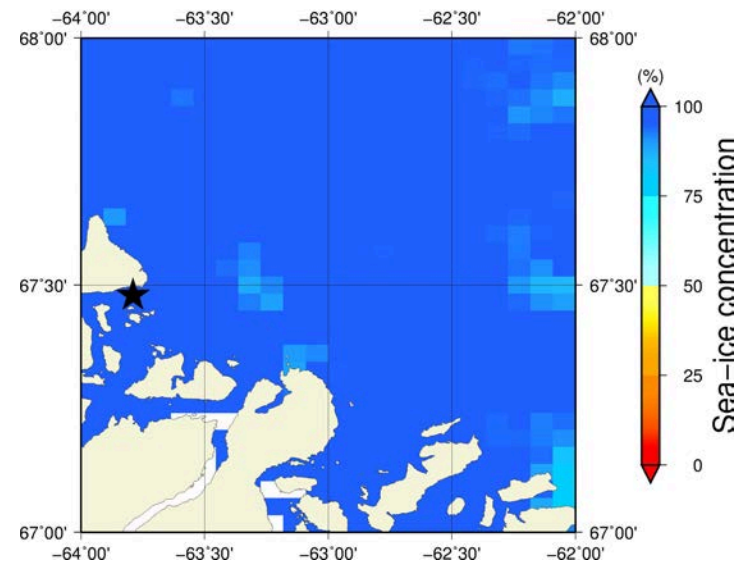
July 3rd (AMSR2) Sea – ice concentration in the region 66° to 69°N and –66° to –60°E



Overview



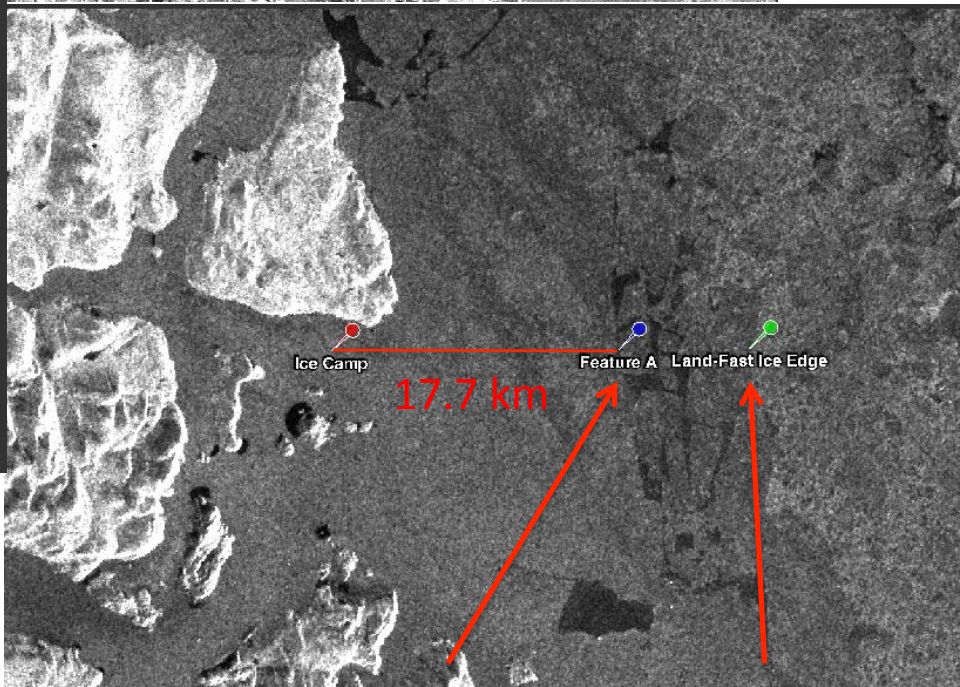
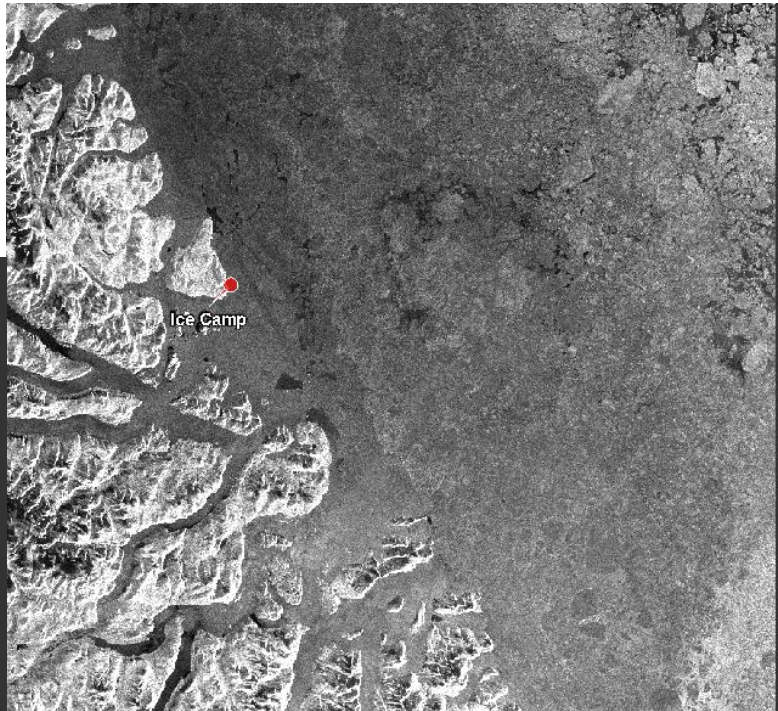
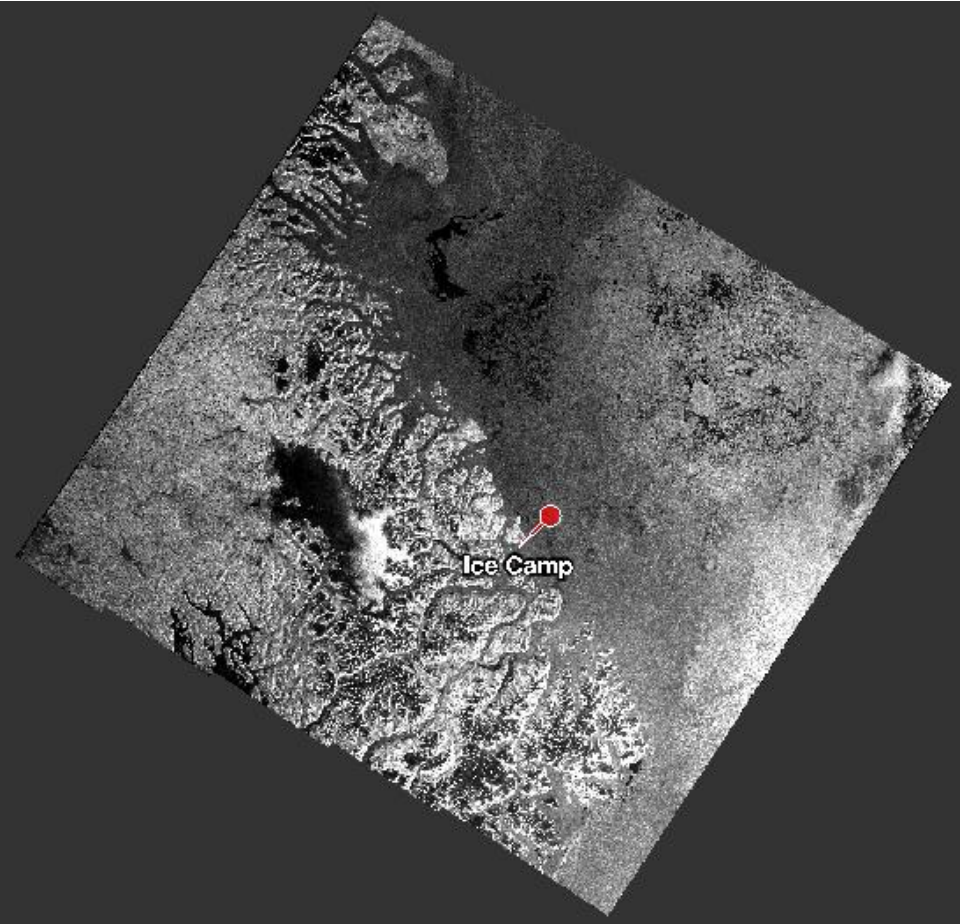
Zoom



July 3rd (MODIS)



July 3rd (Sentinel-1)



Feature A Land-Fast Ice Edge