

Green Edge Amundsen

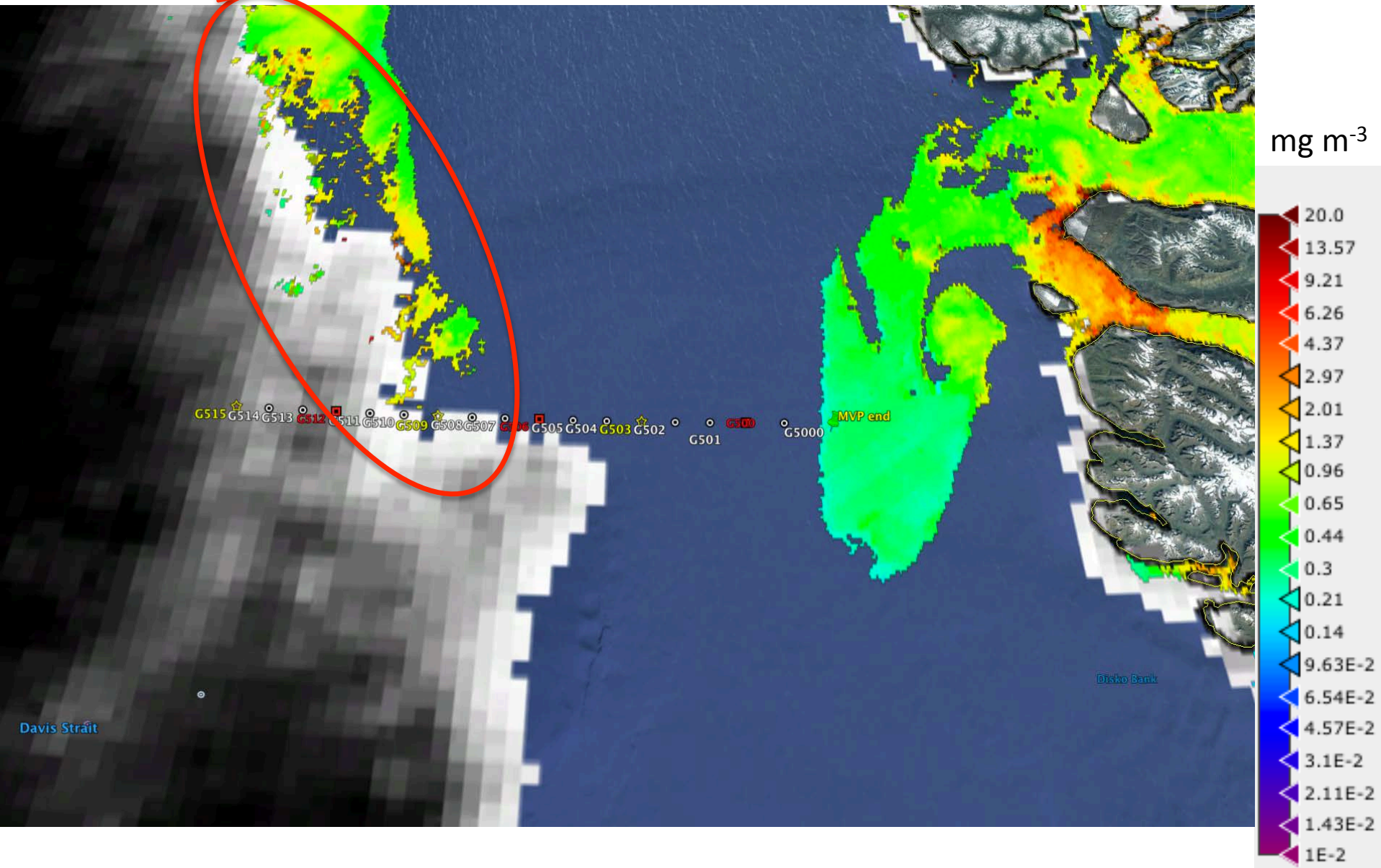
Comments

- On the AMSR2 sea-ice concentration and MODIS chlorophyll-a concentration screen capture of Google Earth Pro, we see higher chlorophyll-a concentration values near the marginal ice zone (Feature A) on the G500 transect. Is it a marginal ice zone phytoplanktonic spring bloom?
- I would recommend downloading Sentinel-1 images subset_G500_of_S1-2016-06-29-69-60-100 (2 MB) and subset_gliders_of_S1-2016-06-29-69-60-100 (13 MB) on <https://goo.gl/SwM77o>.

June 29th

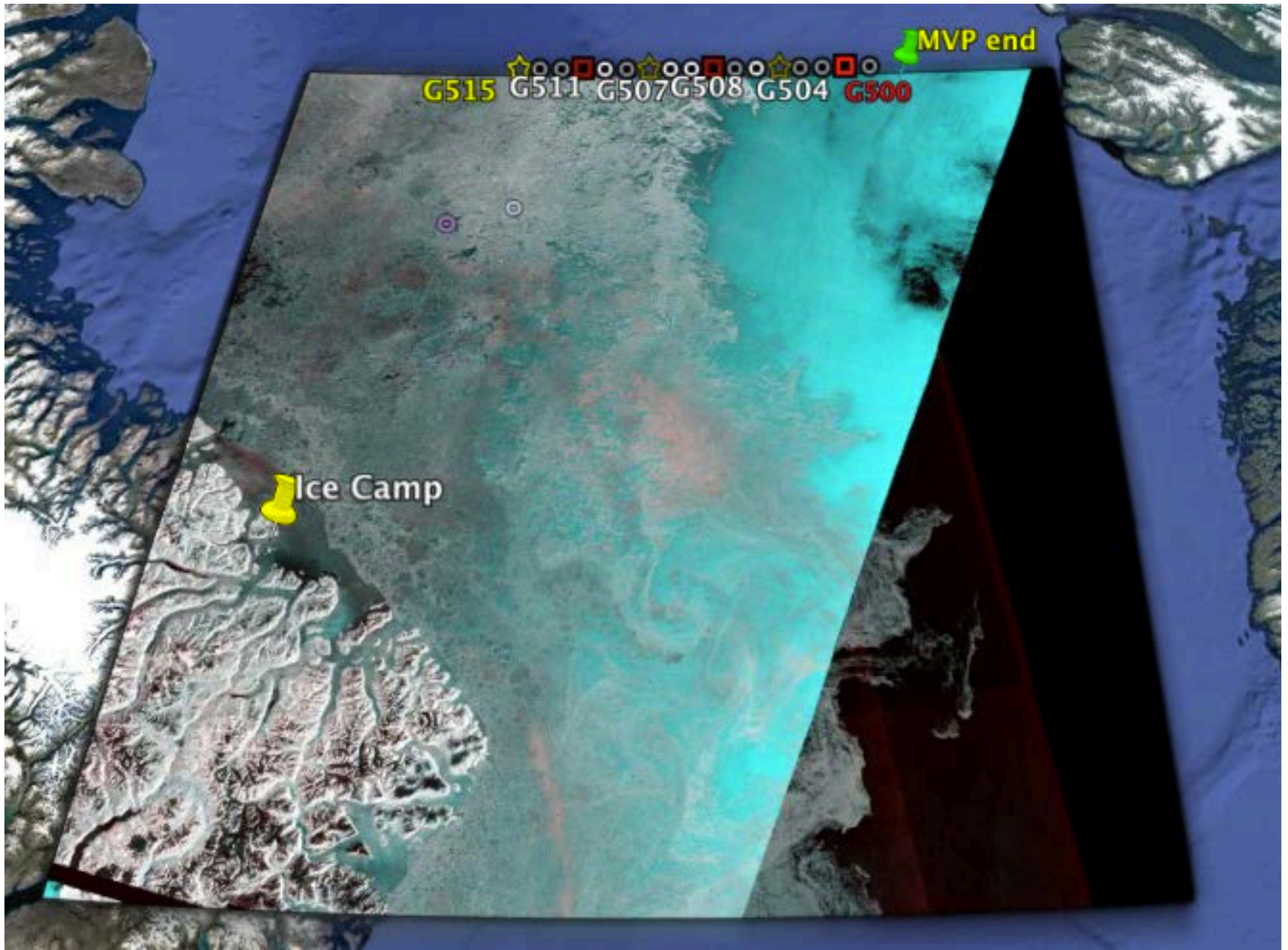
AMSR2 sea-ice concentration and MODIS chlorophyll-a concentration

Feature A



June 29th

Sentinel-1 (S1-2016-06-29-68-60-100.tif, 117 MB)



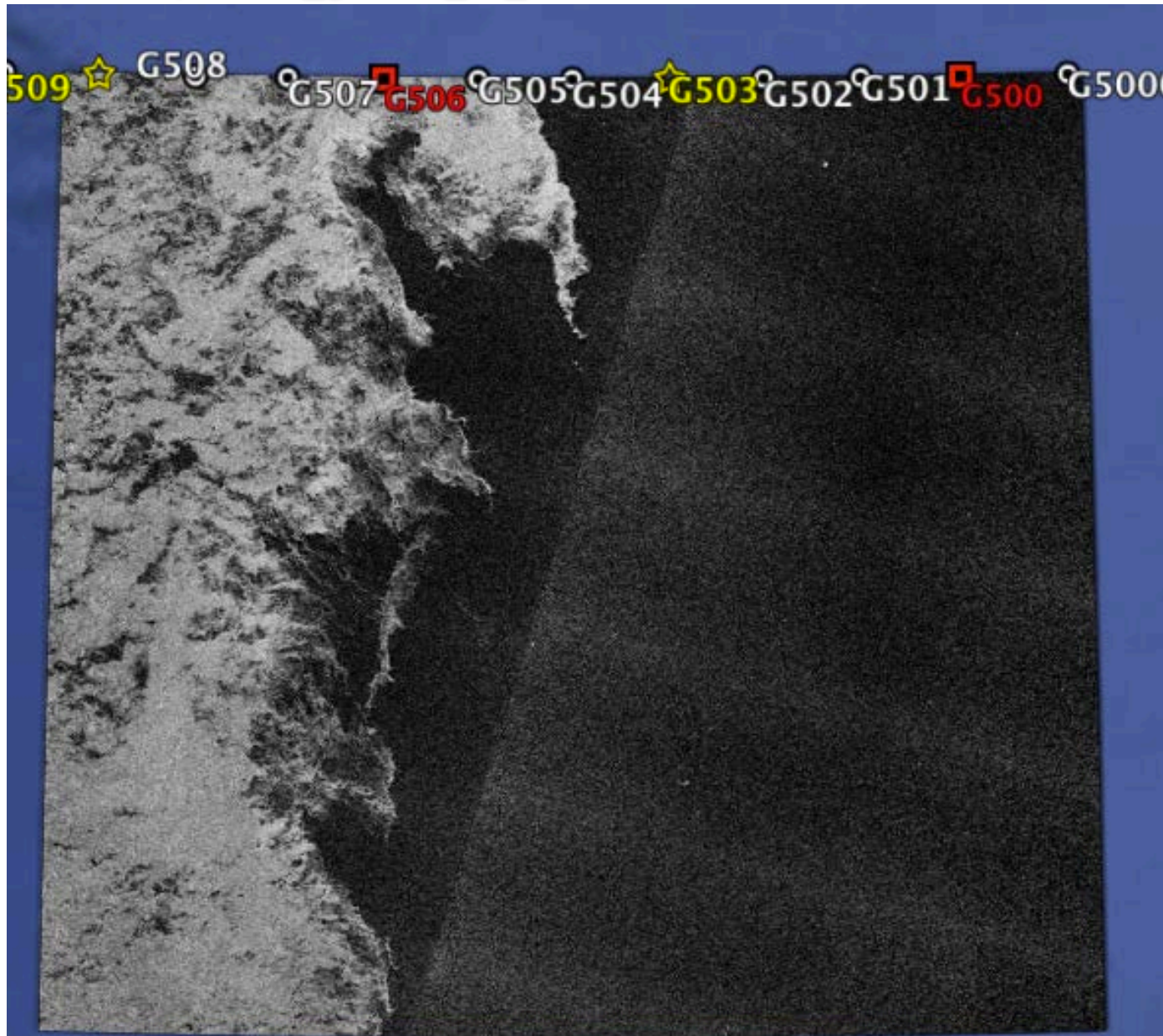
June 29th

Sentinel-1 (subset_G500_of_S1-2016-06-29-68-60-100.tif, 1 MB)



June 29th

Sentinel-1 (subset_gliders_of_S1-2016-06-29-68-60-100.tif, 12 MB)



June 29th

Sentinel-1 (S1-2016-06-29-69-60-100.tif, 126 MB)



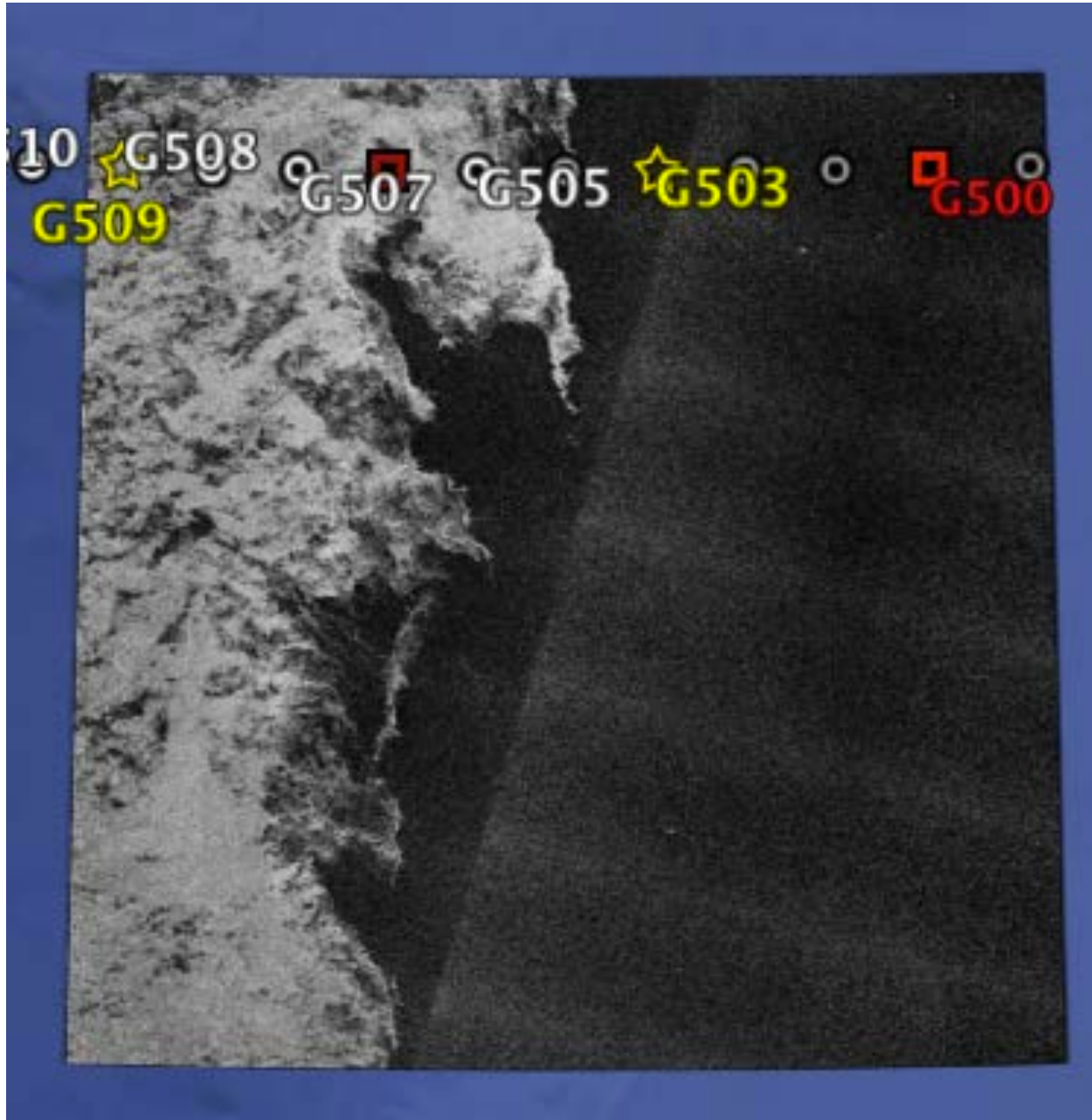
June 29th

Sentinel-1 (subset_G500_of_S1-2016-06-29-69-60-100, 2 MB)



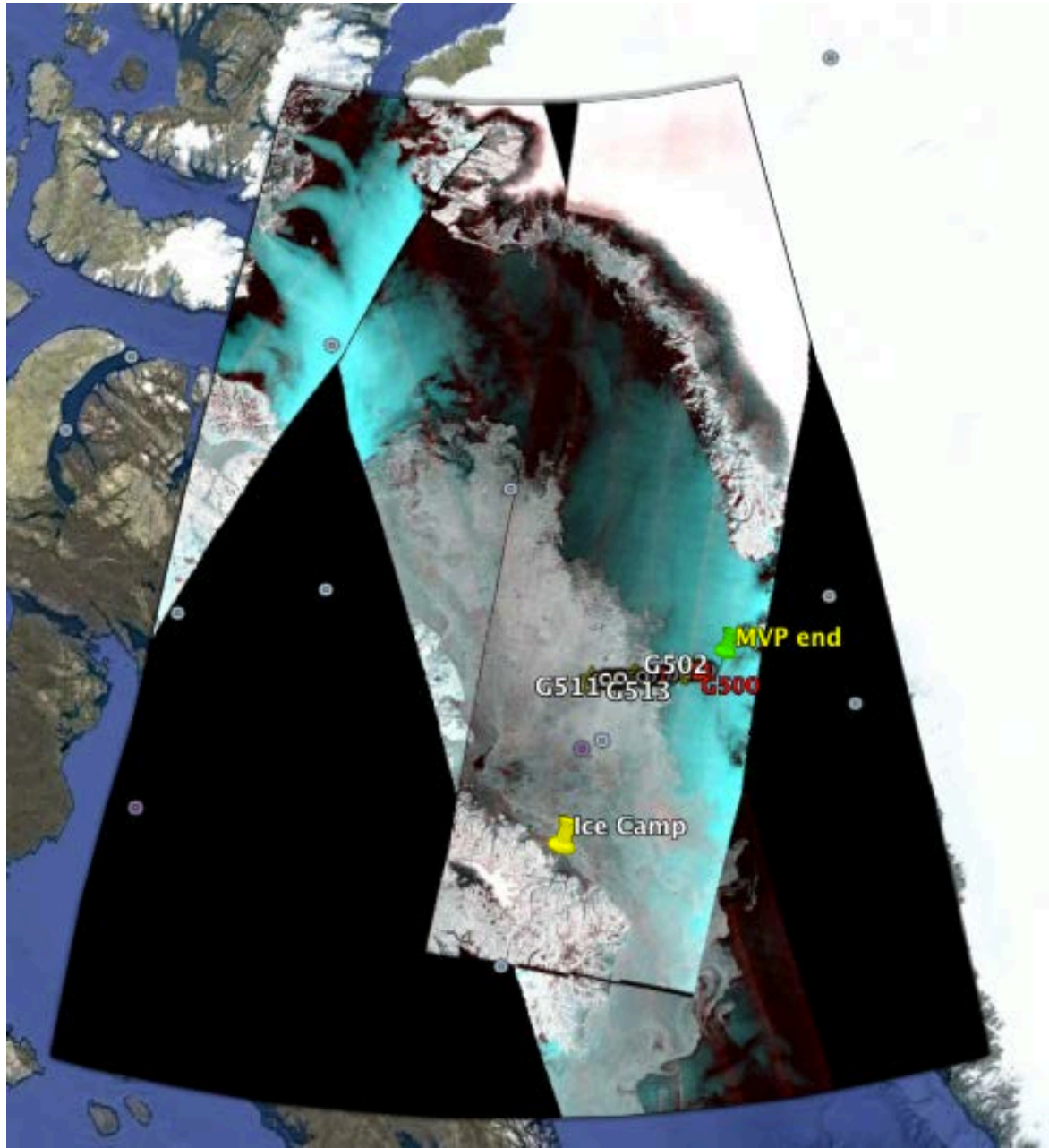
June 29th

Sentinel-1 (subset_gliders_of_S1-2016-06-29-69-60-100, 13 MB)



June 29th

Sentinel-1 (S1-2016-06-29-71-65-500.tif, 30 MB)



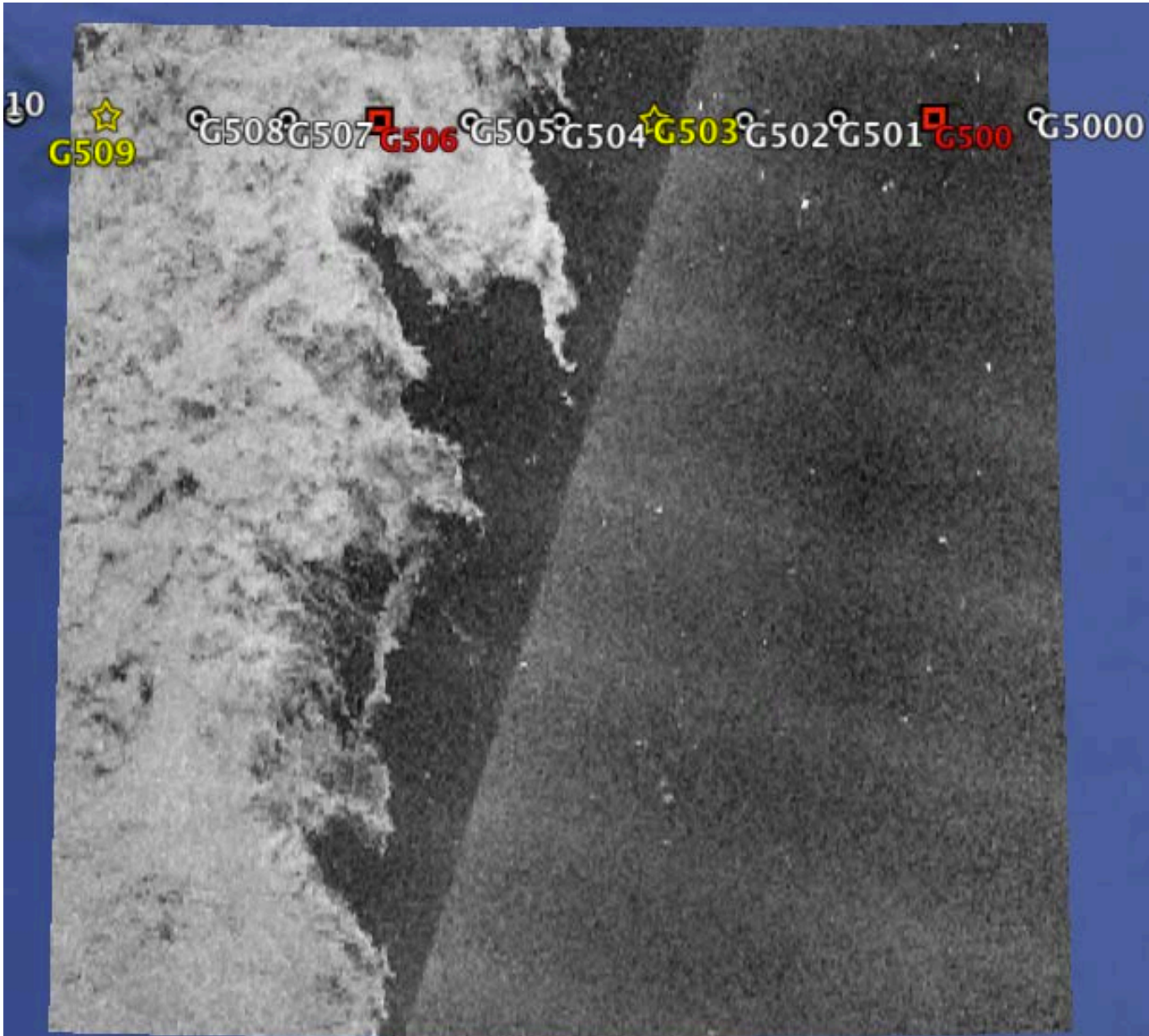
June 29th

Sentinel-1 (subset_G500_of_S1-2016-06-29-71-65-500.tif, 0 MB)



June 29th

Sentinel-1 (subset_gliders_of_S1-2016-06-29-71-65-500.tif, 1 MB)



June 29th

Sentinel-2 (S2-2016-06-29-70-61-50.tif, 457 MB)



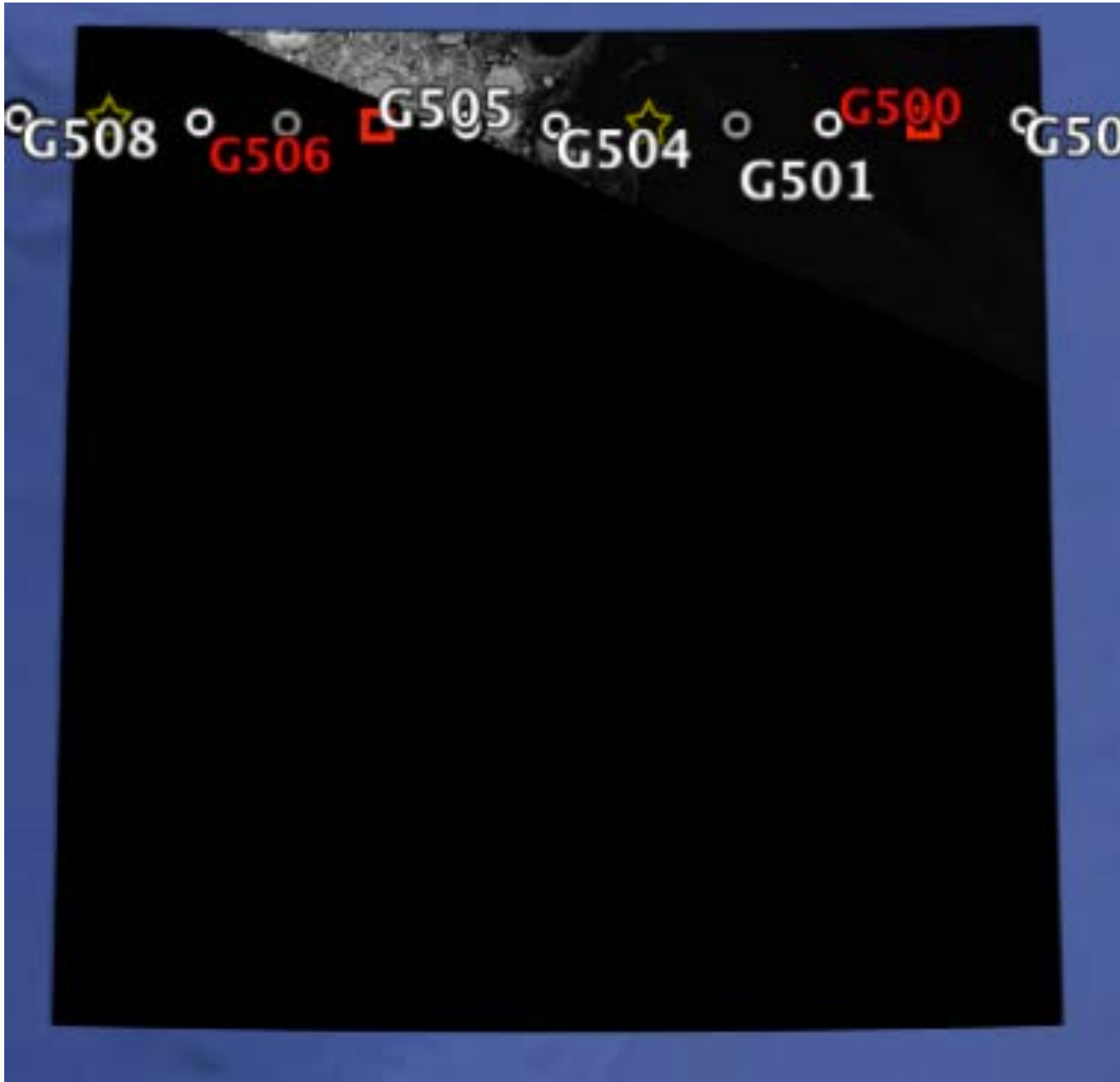
June 29th

Sentinel-2 (subset_G500_of_S2-2016-06-29-70-61-50.tif, 7 MB)



June 29th

Sentinel-2 (subset_gliders_of_S2-2016-06-29-70-61-50.tif, 51 MB)

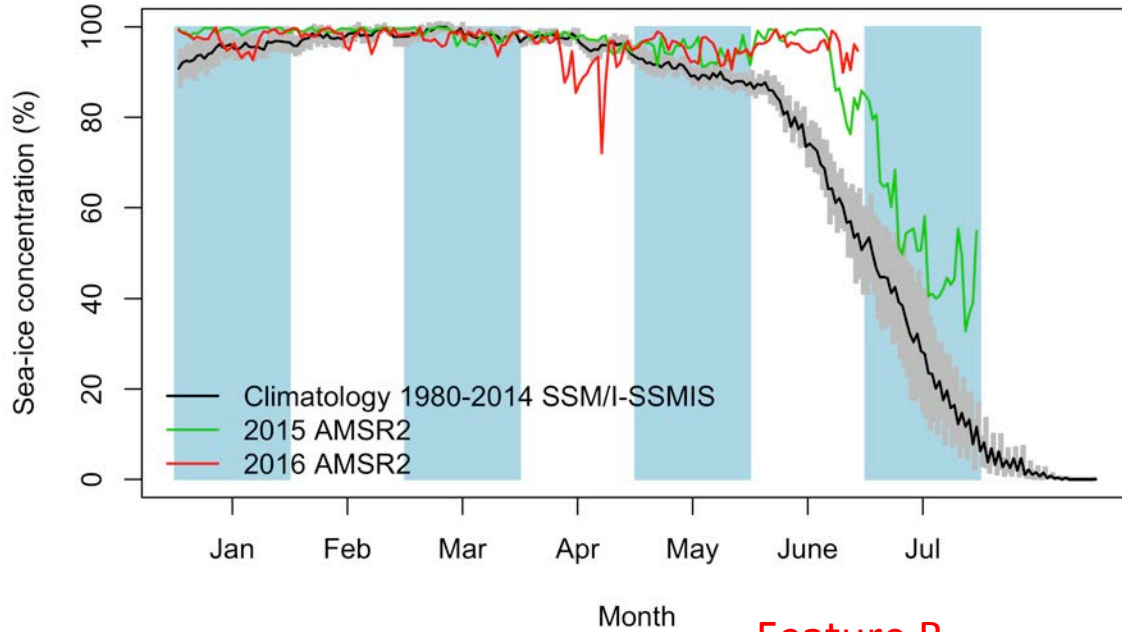


Green Edge Ice Camp

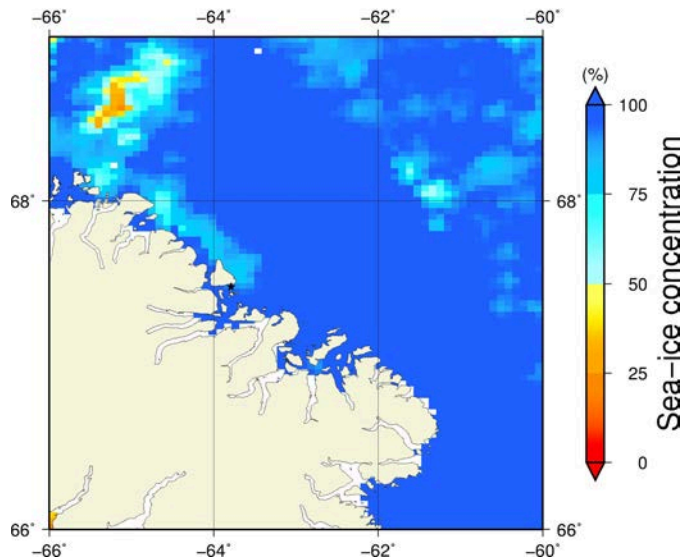
Comments

- On the AMSR2 zoom image of the ice camp, we observe that the sea ice concentration is around 70 % at the north-east coast of Broughton Island (Feature B). **The area of relative low sea-ice concentration touches the ice camp.**

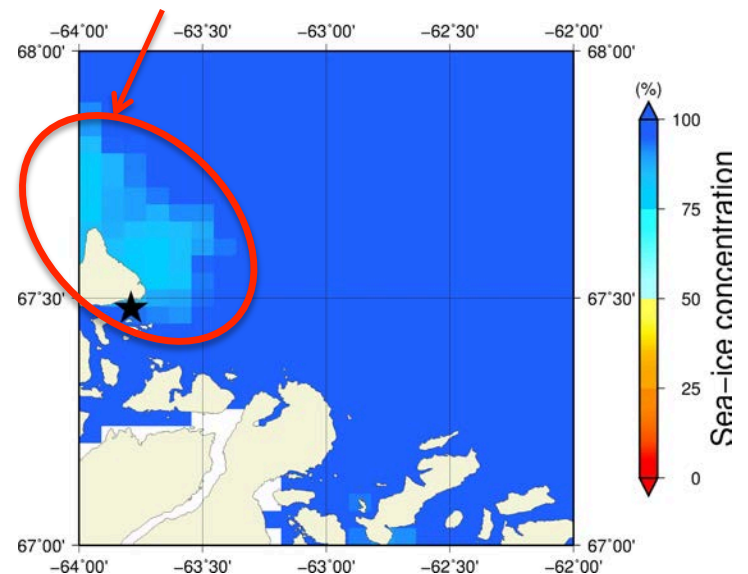
June 29th (AMSR2) Sea - ice concentration in the region 66° to 69°N and -66° to -60°E



Overview



Feature B Zoom



June 29th (MODIS)



Sea-ice concentration

CIS Ice charts

Stage of development

