

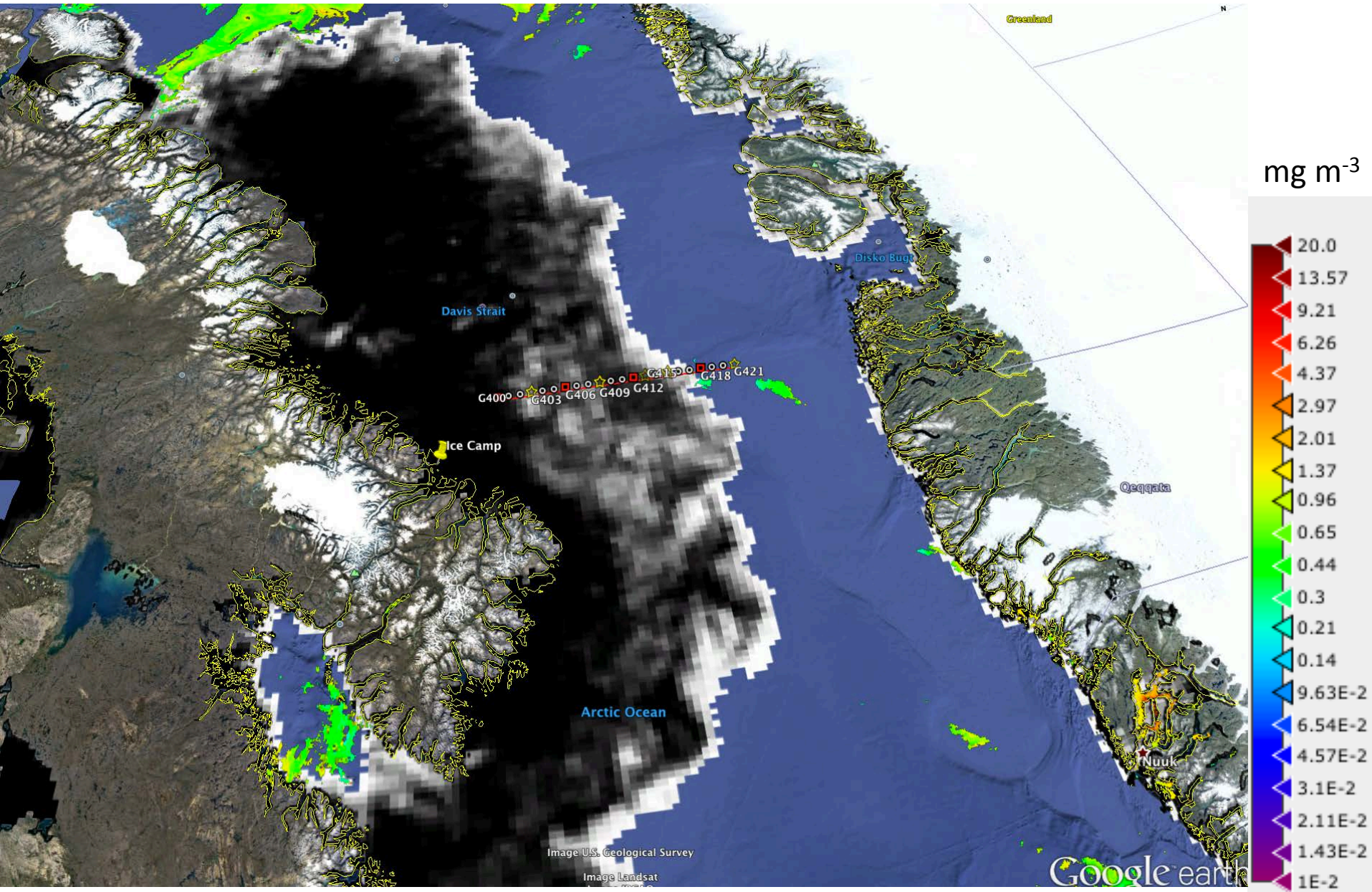
Green Edge Amundsen

Comments

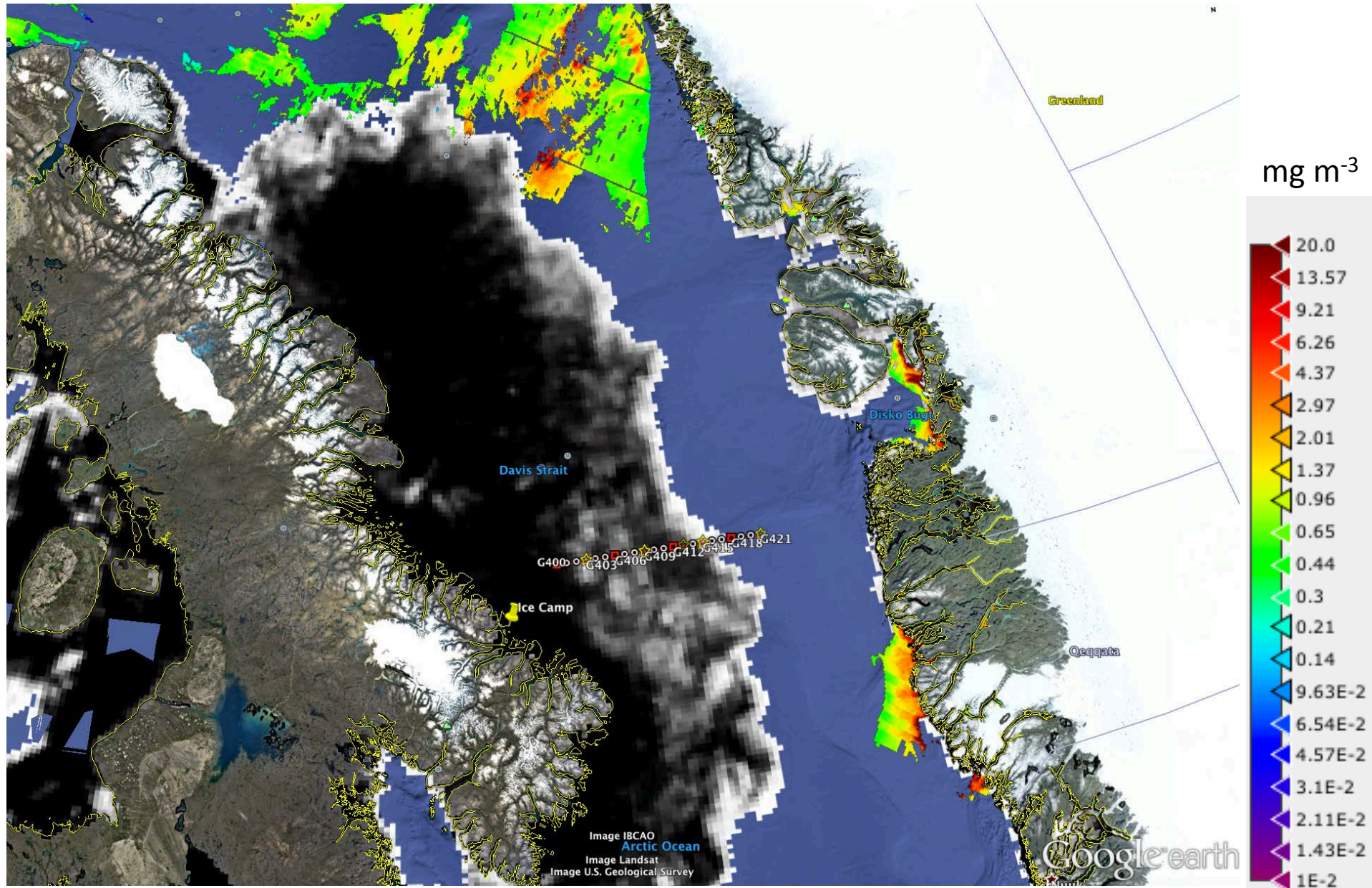
- We see on the AMSR2 image that the sea ice is melting along the G400 transect.
- Sentinel-1 images from Polar View are back online. They are available at <https://goo.gl/SwM77o>. The full image (S1A_EW_GRDM_1SDH_20160627T212737_5A1D_N_1.tif, 250 MB) will be available for at least two days. It will be available after on the FTP server of Québec-Océan.
- The subset for the G400 stations (subset_G400_of_S1A_EW_GRDM_1SDH_20160627T212737_5A1D_N_1.tif, 6MB) and the subset for the gliders (subset_gliders_of_S1A_EW_GRDM_1SDH_20160627T212737_5A1D_N_1.tif, 8 MB) will remain indefinitely at <https://goo.gl/SwM77o>. Previews are available at <http://www.greenedgeproject.info/data.php>.

June 27th

AMSR2 sea-ice concentration and MODIS chlorophyll-a concentration

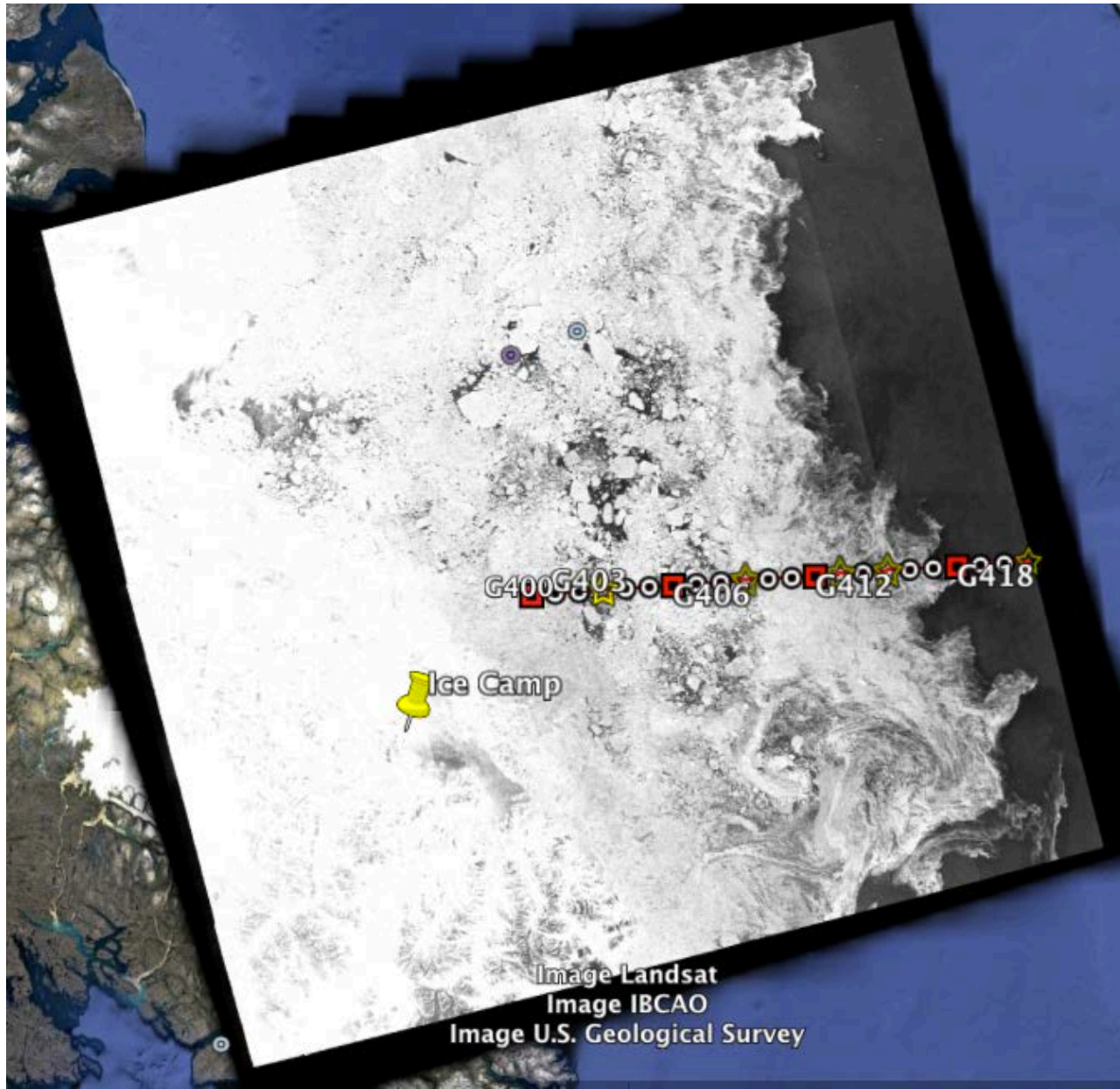


AMSR2 sea-ice concentration of June 27th
and MODIS chlorophyll-a concentration of June 28th



June 27th

Sentinel-1 from PolarView (S1A_EW_GRDM_1SDH_20160627T212737_5A1D_N_1.tif,
250 MB)



June 27th

Sentinel-1 from PolarView

subset_G400_of_S1A_EW_GRDM_1SDH_20160627T212737_5A1D_N_1.tif, 6 MB)



June 27th

Sentinel-1 from PolarView

subset_gliders_of_S1A_EW_GRDM_1SDH_20160627T212737_5A1D_N_1.tif, 8 MB)



June 27th

Sentinel-2 (S2-2016-06-27-70-61-50.tif, 460 MB)

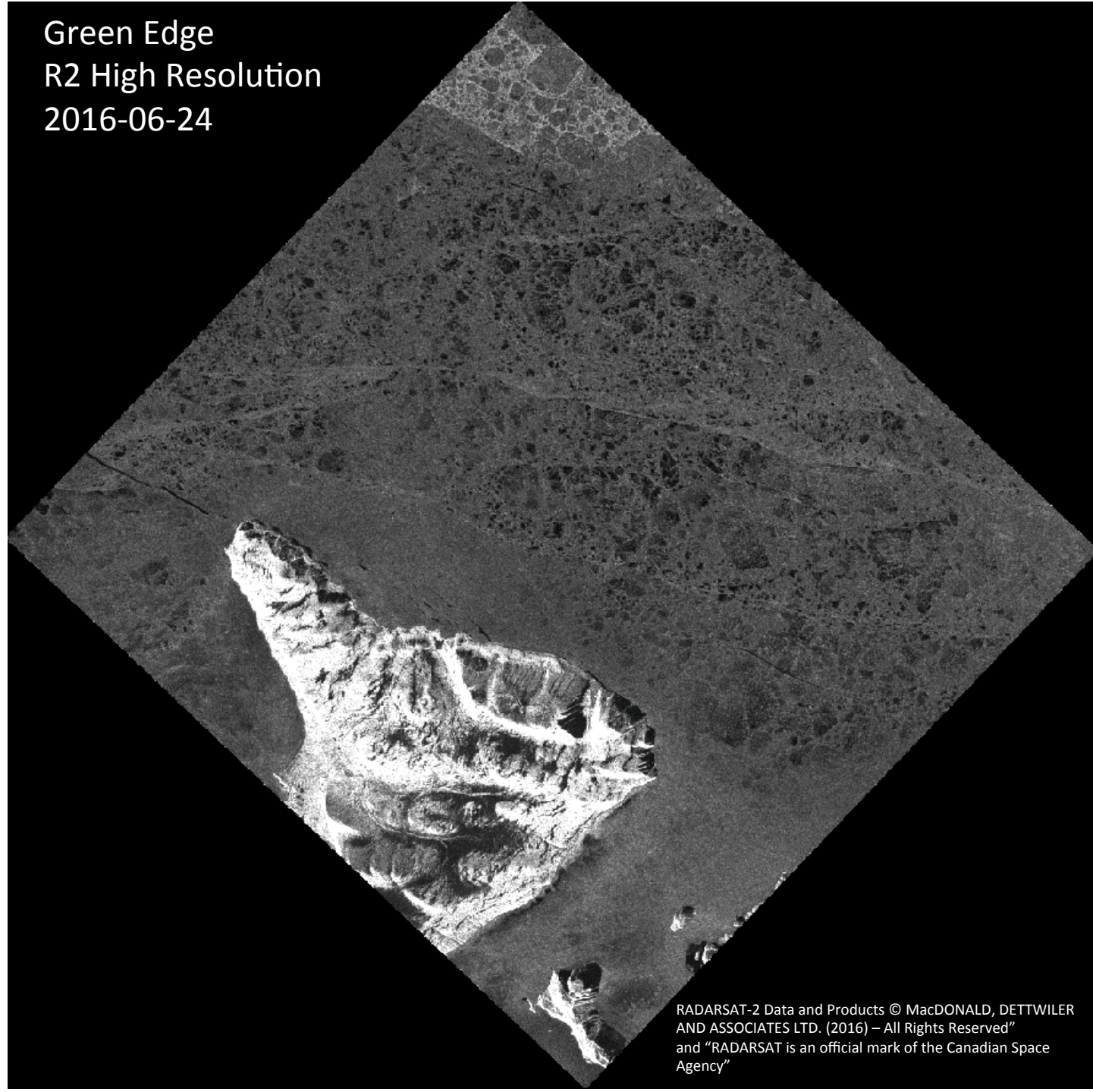


Green Edge Ice Camp

Comments

- We have RADARSAT-2 high-resolution images thanks to Marilee Pregitzer from the Canadian Ice Service.
- Sentinel-1 images are back online.
- We see in the Sentinel-1 image that the distance between the marginal ice zone in the middle of Davis Strait and the ice camp is stable since May 29th. This distance decreased from 294.0 km (May 5th) to 287.3 km (May 10th) to 248.4km (May 17th) to 245.1 km (May 18th) to 252.3 km (May 22nd) to 233.4 km (May 29th) to 232.2 km (June 10th) to 235.4 km (June 15th) to 240.7 km (June 27th).
- The distance between the marginal ice zone in Home Bay and the ice camp is continuously decreasing. It decreased from 153.5 km (June 2nd) to 127.8 km (June 13th) to 112.3 km (June 27th).
- The distance between the land-fast ice edge and the ice camp decreased only from 25.0 km to 24.3 km from April 22nd to June 28th.

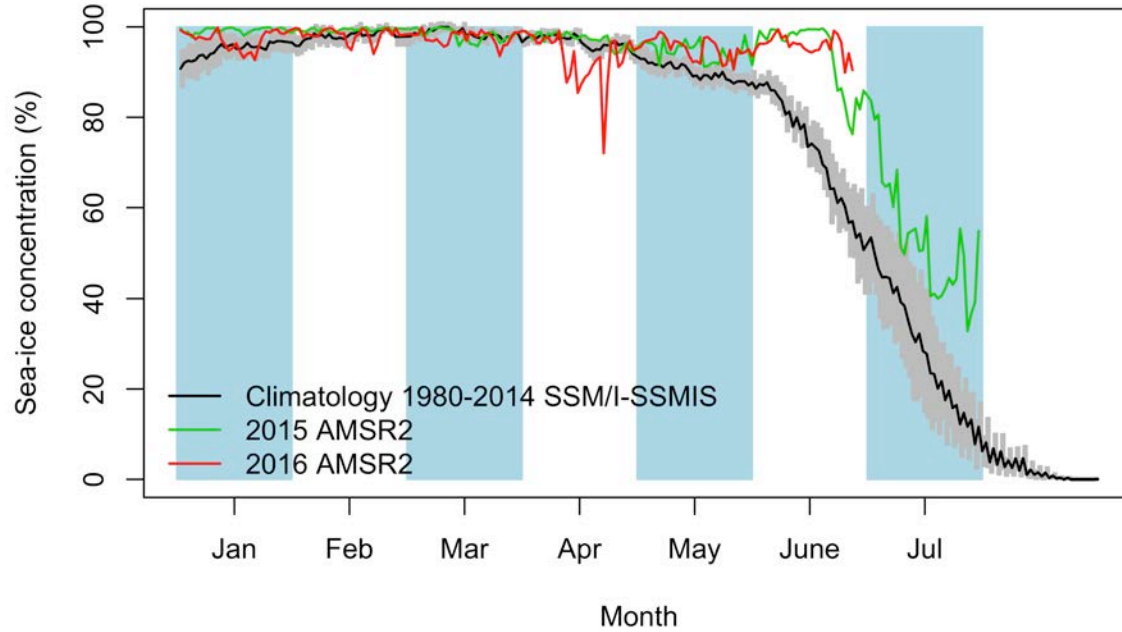
Green Edge
R2 High Resolution
2016-06-24



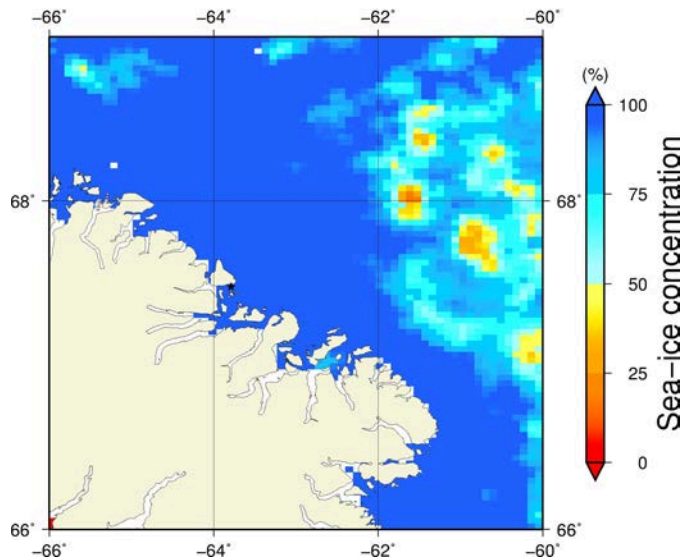
RADARSAT-2 Data and Products © MacDONALD, DETTWILER
AND ASSOCIATES LTD. (2016) – All Rights Reserved”
and “RADARSAT is an official mark of the Canadian Space
Agency”

Green Edge
R2 High Resolution
2016-06-24

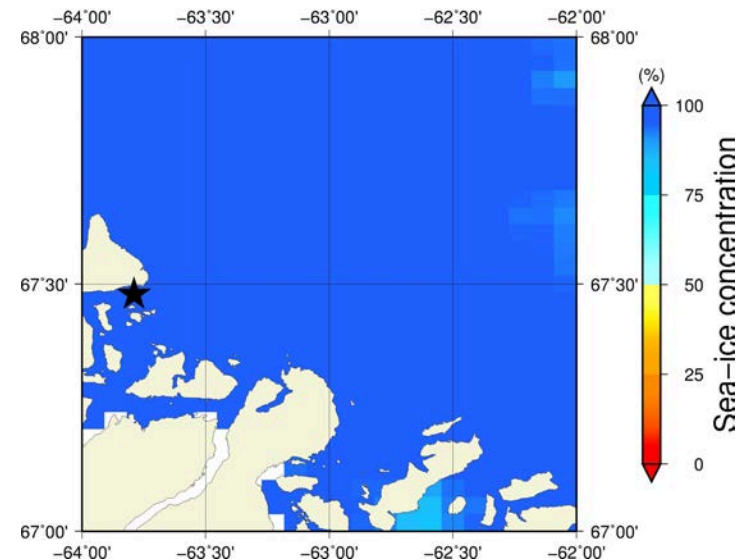
June 27th (AMSR2) Sea – ice concentration in the region 66° to 69°N and –66° to –60°E



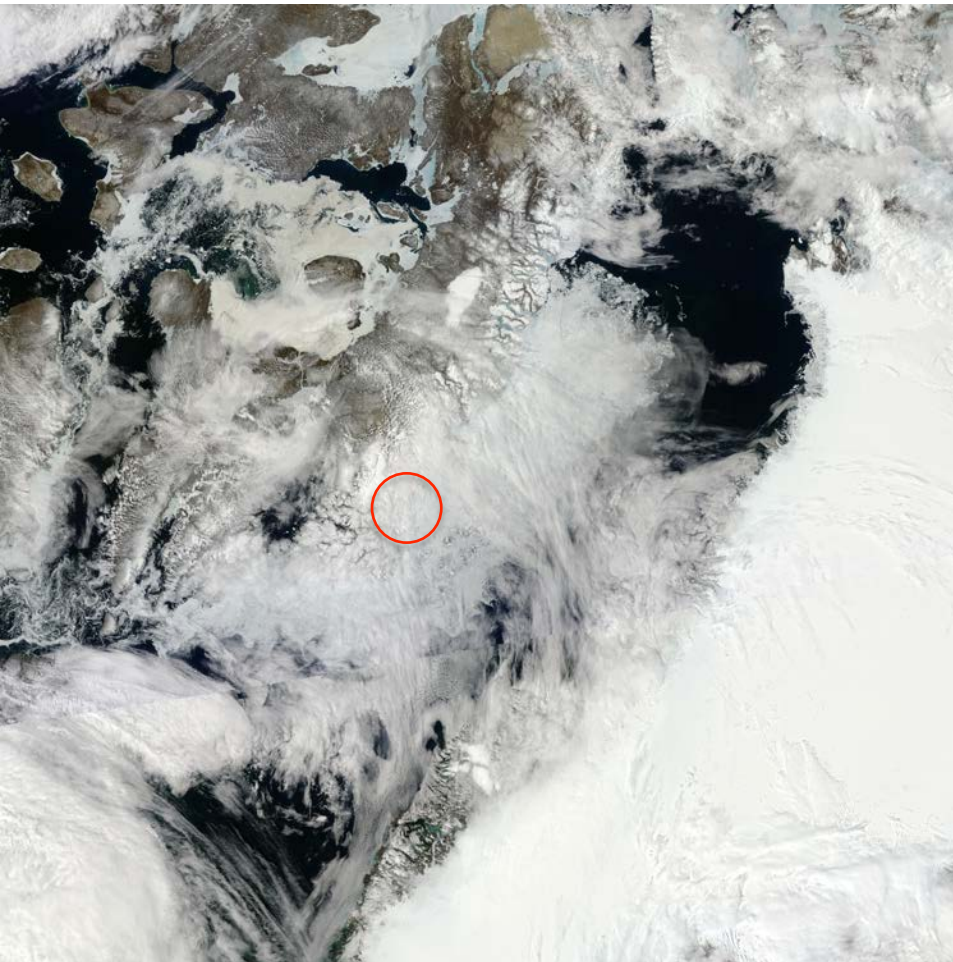
Overview



Zoom



June 27th (MODIS)



June 27th (Sentinel-1)

