

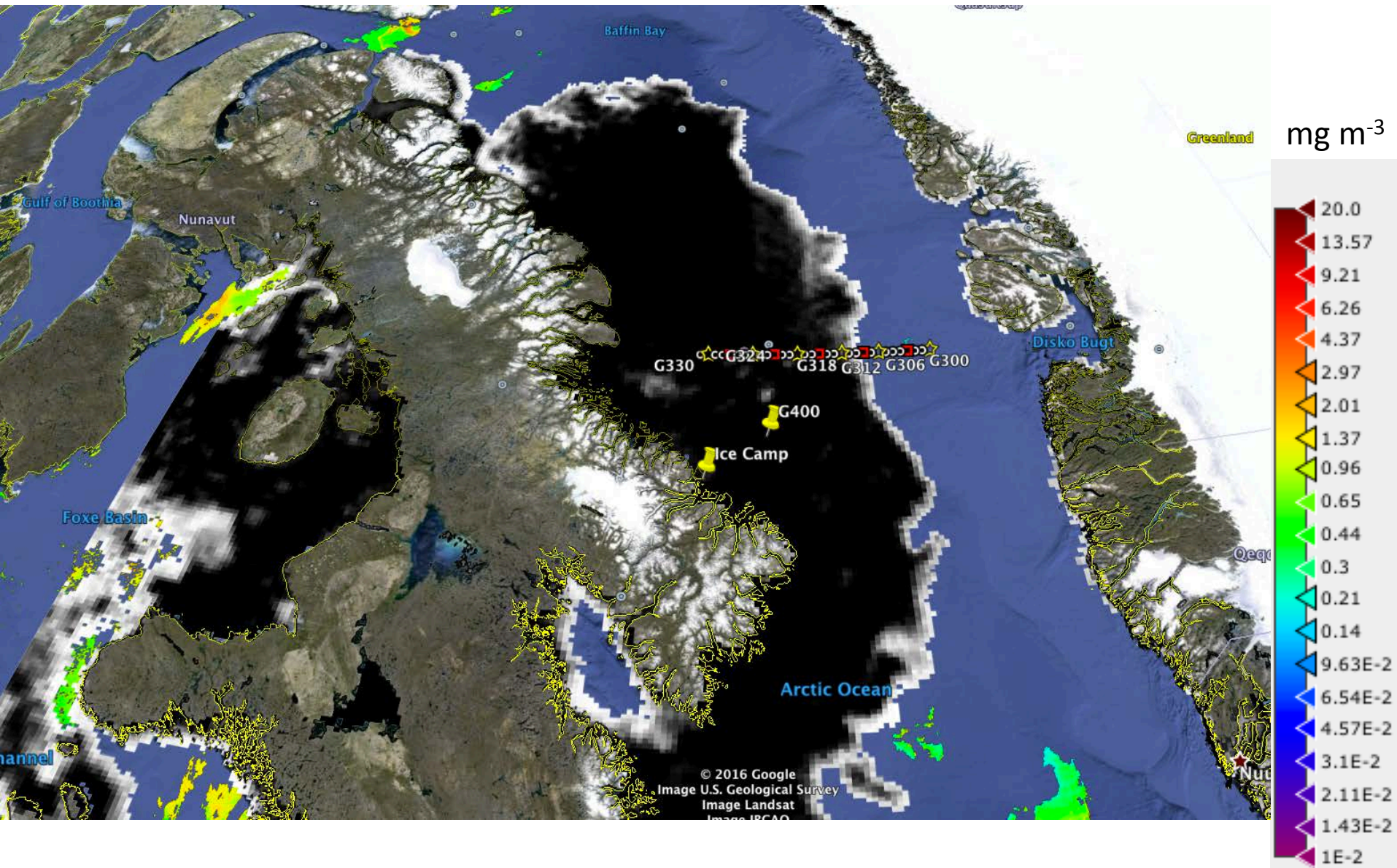
Green Edge Amundsen

Comments

- Sentinel-1 imagery is still unavailable. The Sentinel-1 images on <http://gliders.takuvik.ulaval.ca/ice/S12/> (S1-*.tif) don't contain any data. I would not recommend downloading them.
- The Sentinel-2 image on <http://gliders.takuvik.ulaval.ca/ice/S12/> (S2-2016-06-23-70-61-50.tif, 428 MB) doesn't contain new cloud-free data in the region of interest comparatively to the Sentinel-2 image of June 20th. I would not recommend downloading it if you already have the Sentinel-2 image of June 20th.
- Note that the Sentinel-2 image subset of June 21st (198 MB) is still available on the FTP server of Québec-Océan.

June 23rd

AMSR2 sea-ice concentration and MODIS chlorophyll-a concentration

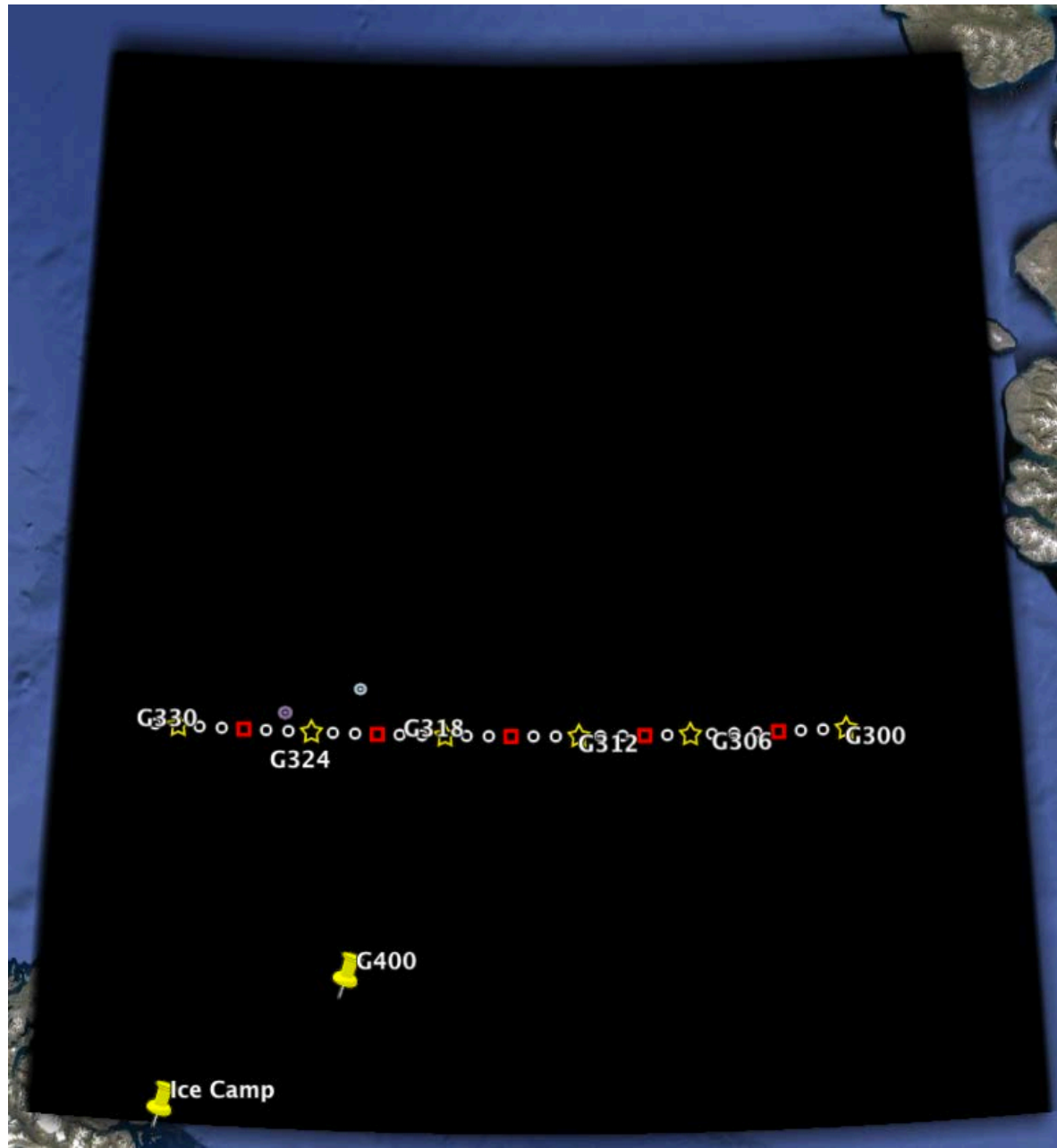


June 23rd

Sentinel-1 sea ice (S1-2016-06-23-68-60-100.tif, 1 MB)

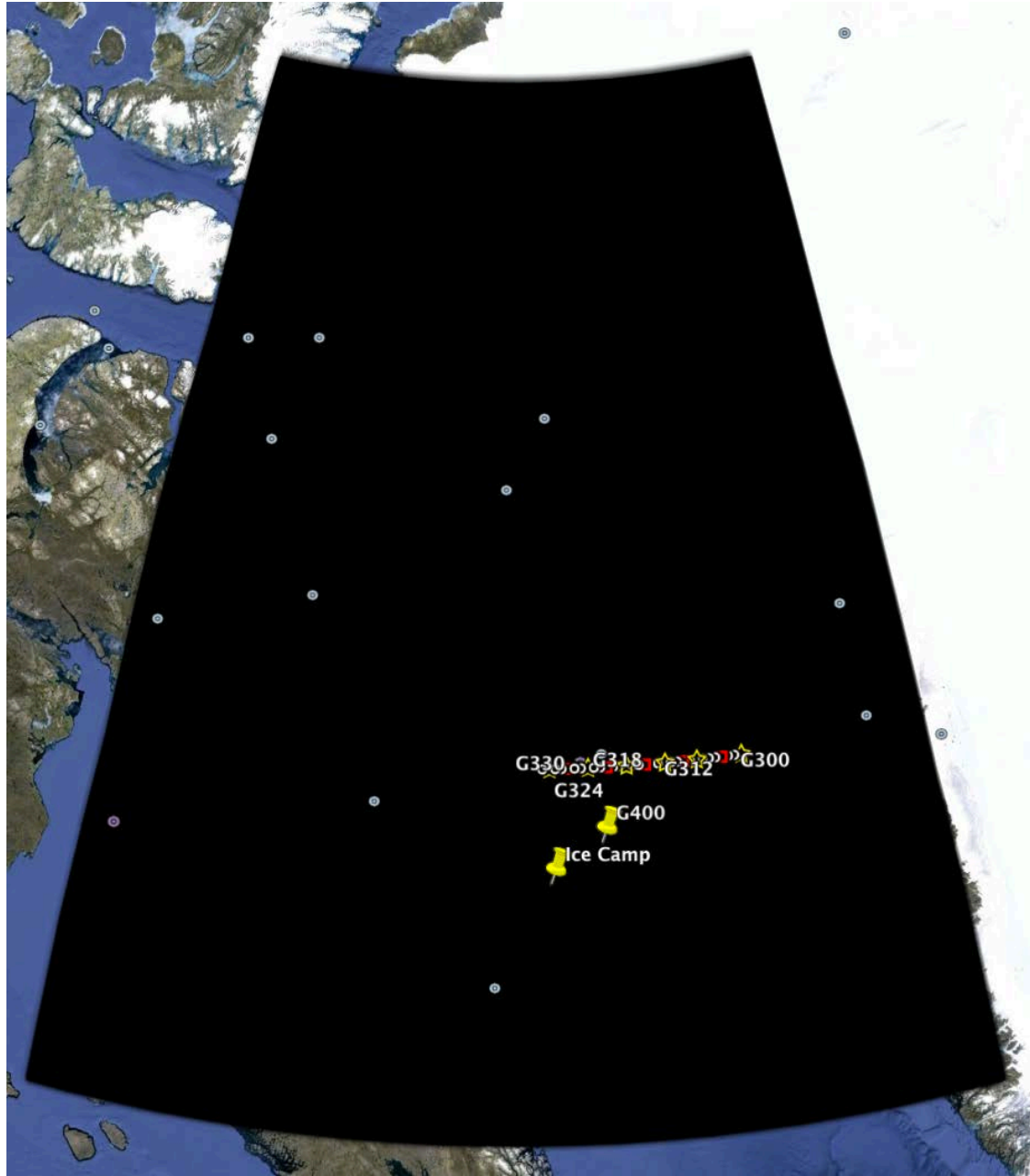
June 23rd

Sentinel-1 sea ice (S1-2016-06-23-69-60-100.tif, 1 MB)



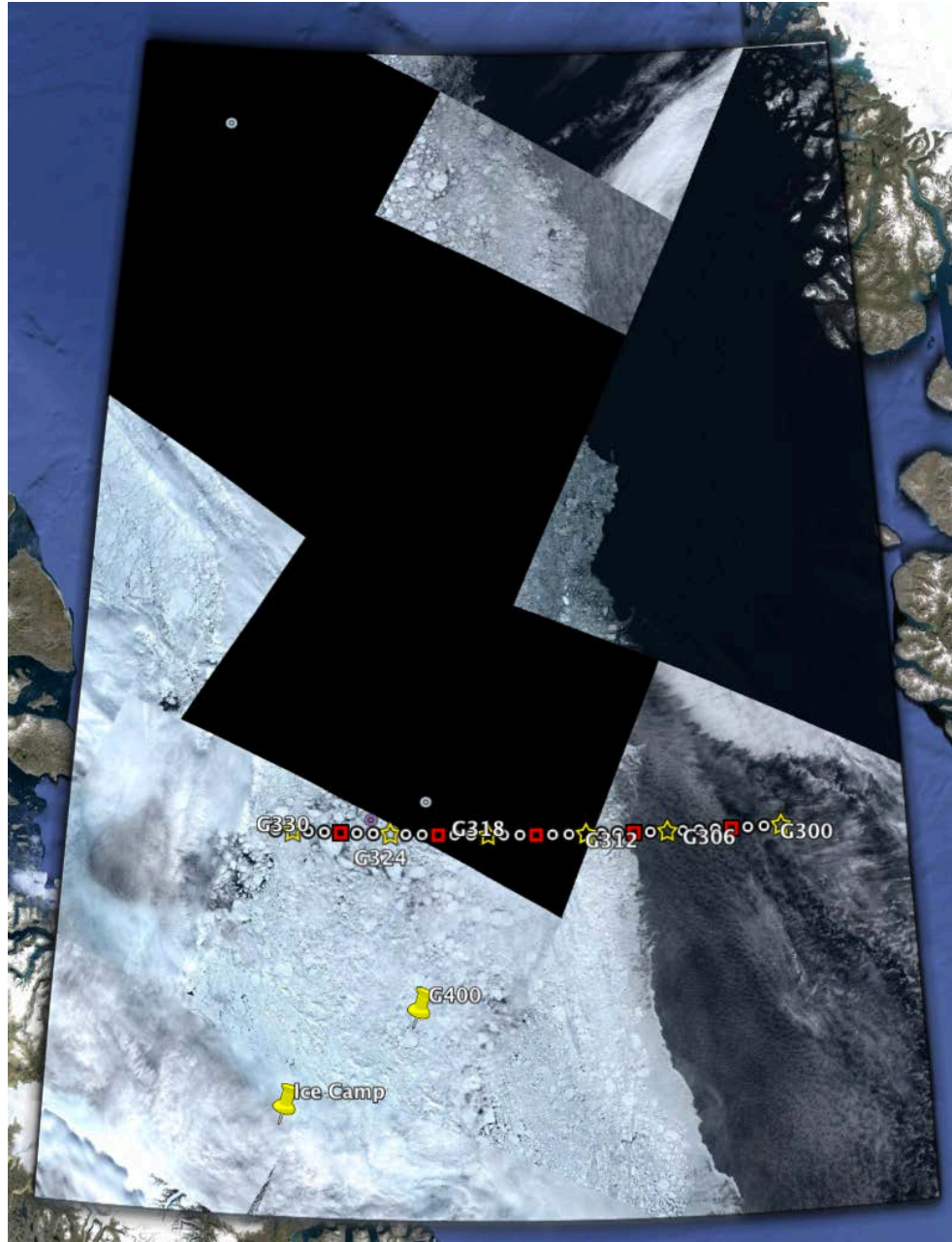
June 23rd

Sentinel-1 sea ice (S1-2016-06-23-71-65-500.tif, 0 MB)



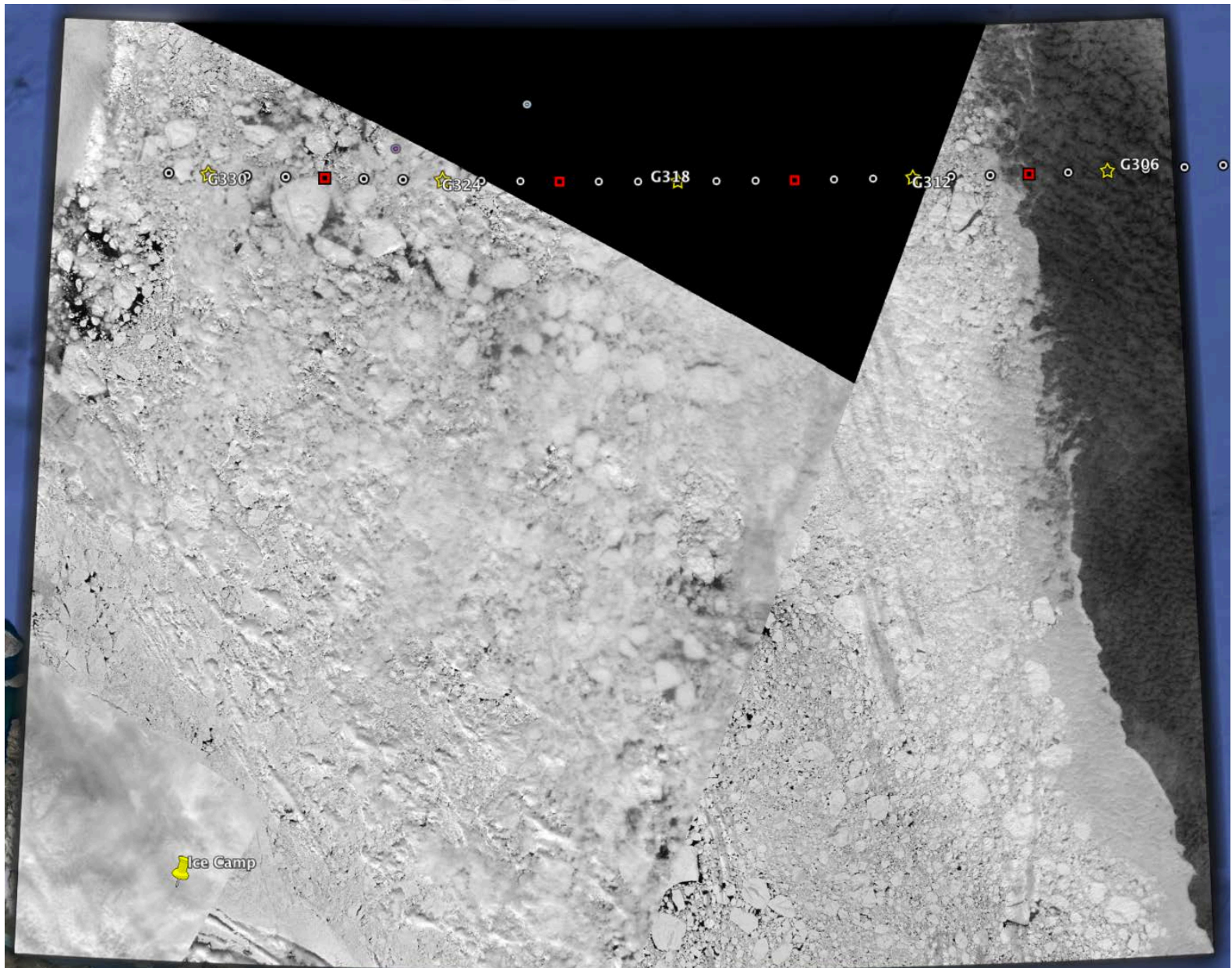
June 23rd

Sentinel-2 (S2-2016-06-23-70-61-50.tif, 428 MB)



June 21st

Sentinel-2 (subset_0_of_S2-2016-06-21-70-61-50.tif, 198 MB)

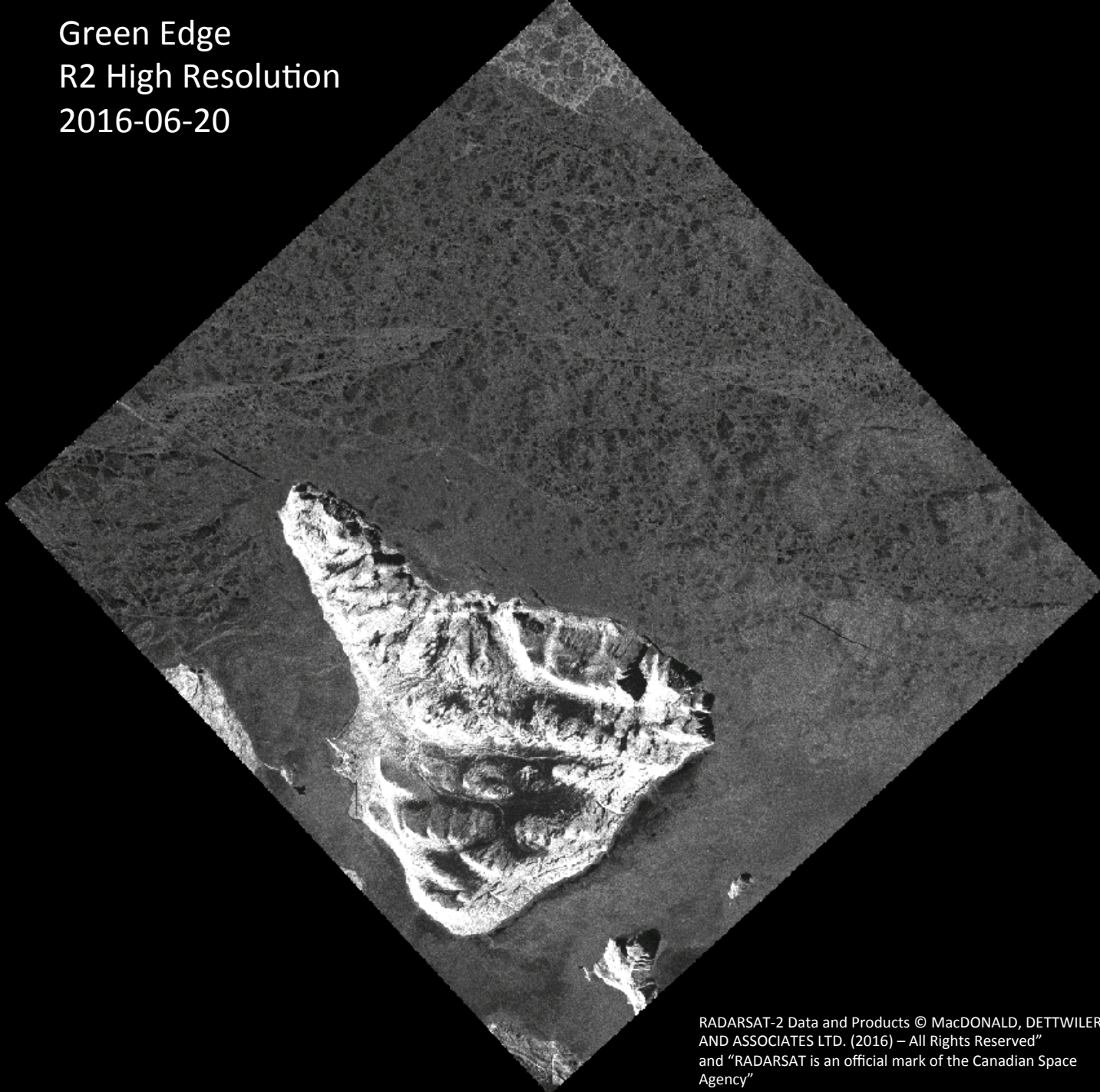


Green Edge Ice Camp

Comments

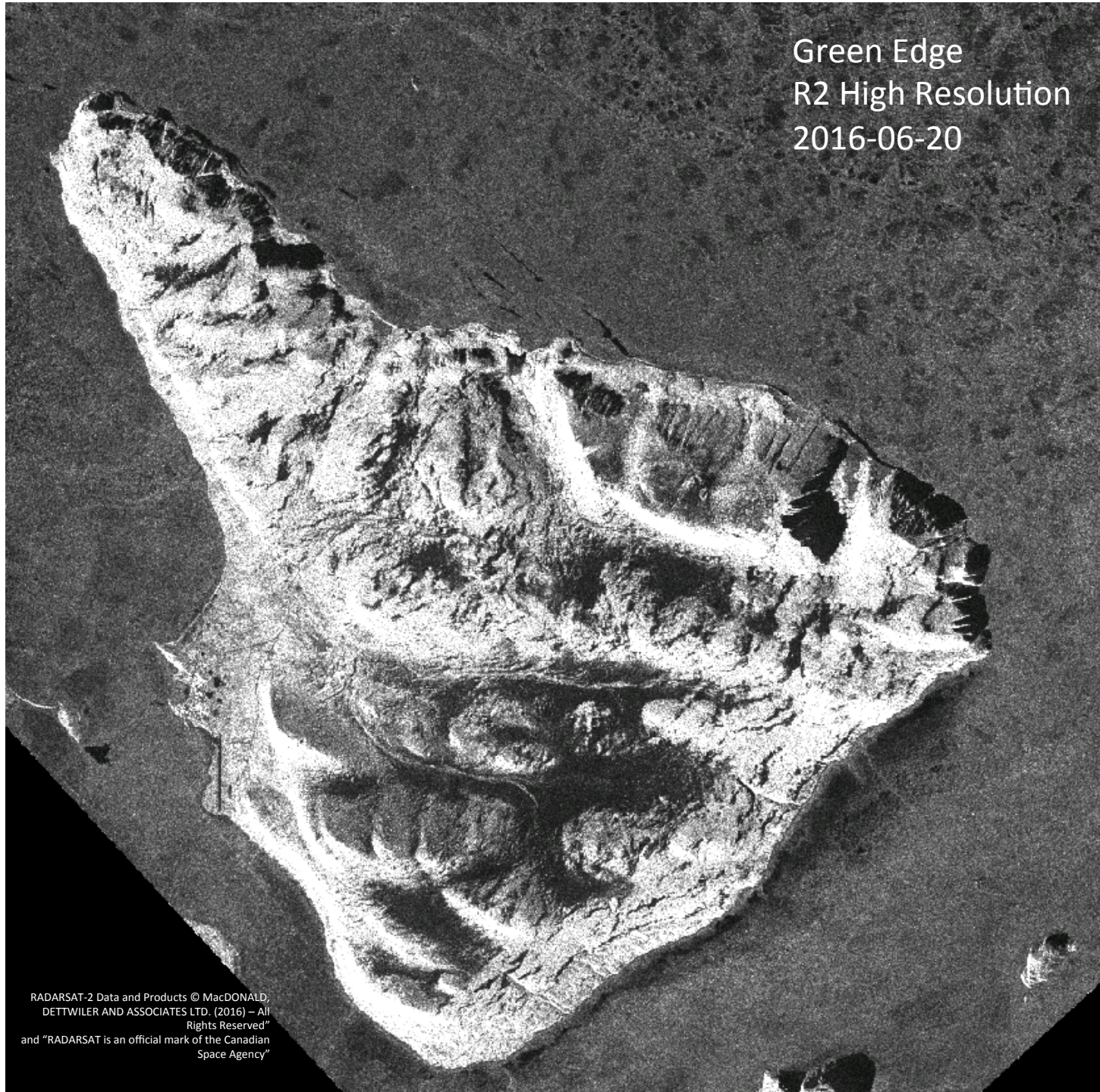
- We have RADARSAT-2 high-resolution images thanks to Marilee Pregitzer from the Canadian Ice Service. We observe that a different sort of ice begins at Feature A on the third RADARSAT-2 high-resolution image. Feature A is not the land-fast ice edge which is farer.

Green Edge
R2 High Resolution
2016-06-20



RADARSAT-2 Data and Products © MacDONALD, DETTWILER
AND ASSOCIATES LTD. (2016) – All Rights Reserved”
and “RADARSAT is an official mark of the Canadian Space
Agency”

Green Edge
R2 High Resolution
2016-06-20



RADARSAT-2 Data and Products © MacDONALD,
DETTWILER AND ASSOCIATES LTD. (2016) – All
Rights Reserved”
and “RADARSAT is an official mark of the Canadian
Space Agency”

Green Edge R2 High Resolution 2016-06-20

RADARSAT-2 Data and Products © MacDONALD,
DETTWILER AND ASSOCIATES LTD. (2016) – All
Rights Reserved”
and “RADARSAT is an official mark of the Canadian
Space Agency”

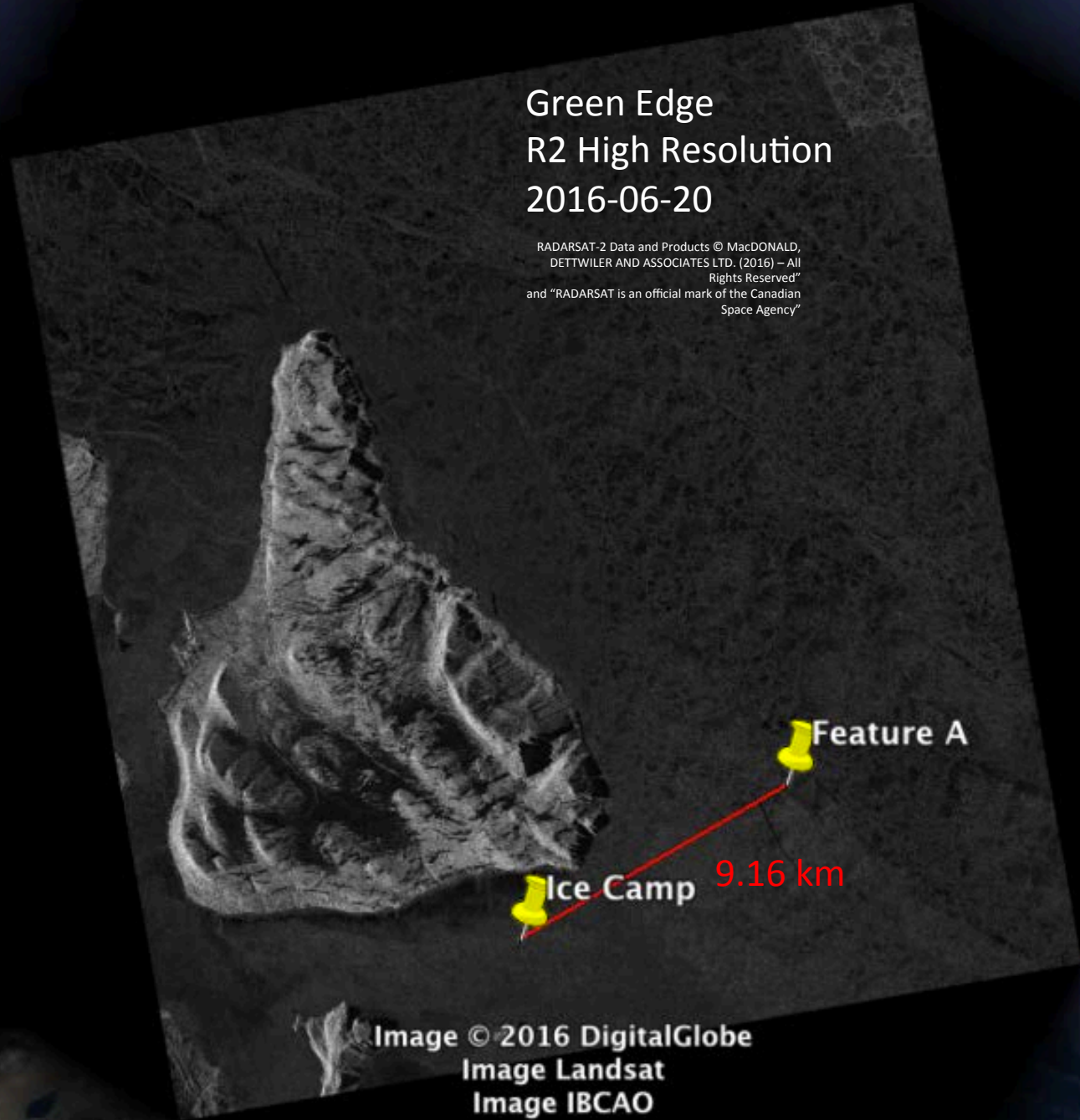
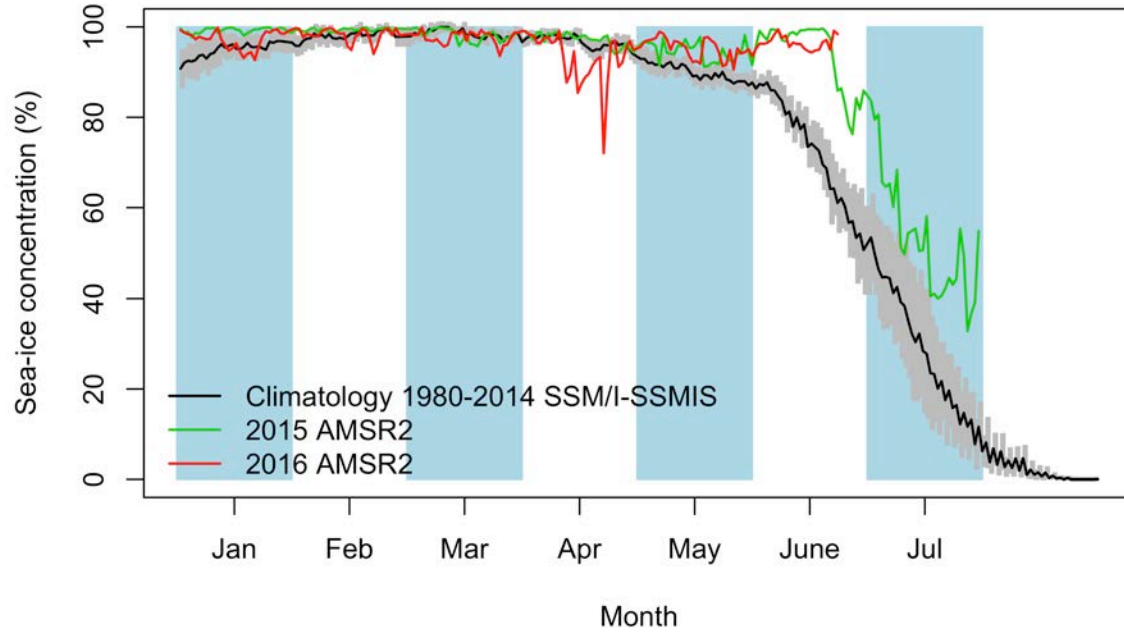


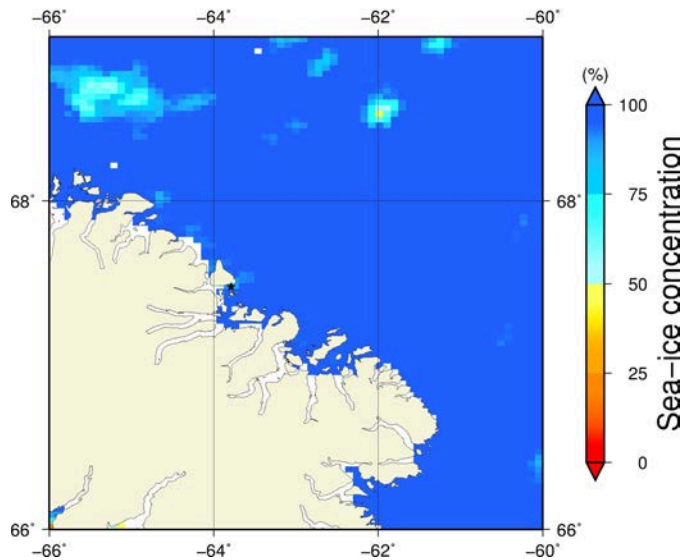
Image © 2016 DigitalGlobe
Image Landsat
Image IBCAO



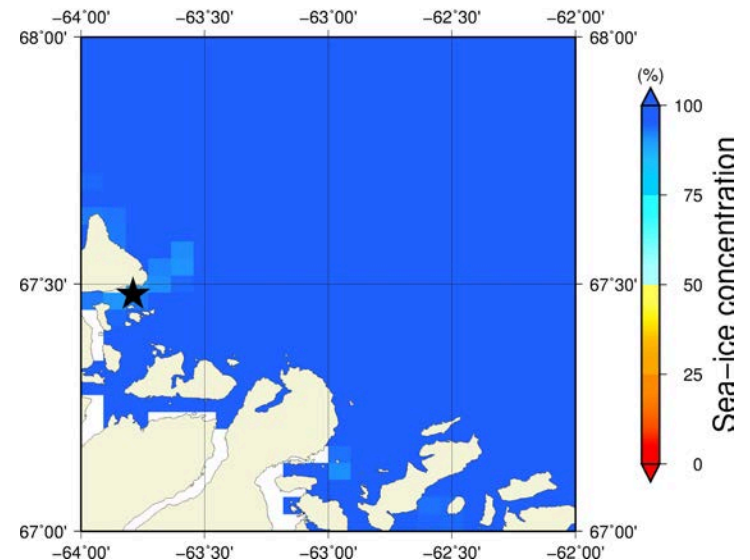
June 23rd (AMSR2) Sea - ice concentration in the region 66° to 69°N and -66° to -60°E



Overview



Zoom



June 23rd (MODIS)

