

# Green Edge General

# Comments

- Sentinel-1 tweeted on June 21<sup>st</sup> at 7:13 AM (EDT): *Sentinel1A imagery is still unavailable. Investigations are progressing but further tests are needed before operations can be resumed.* See <https://twitter.com/PolarViewStatus>. I will keep you posted about the developments.

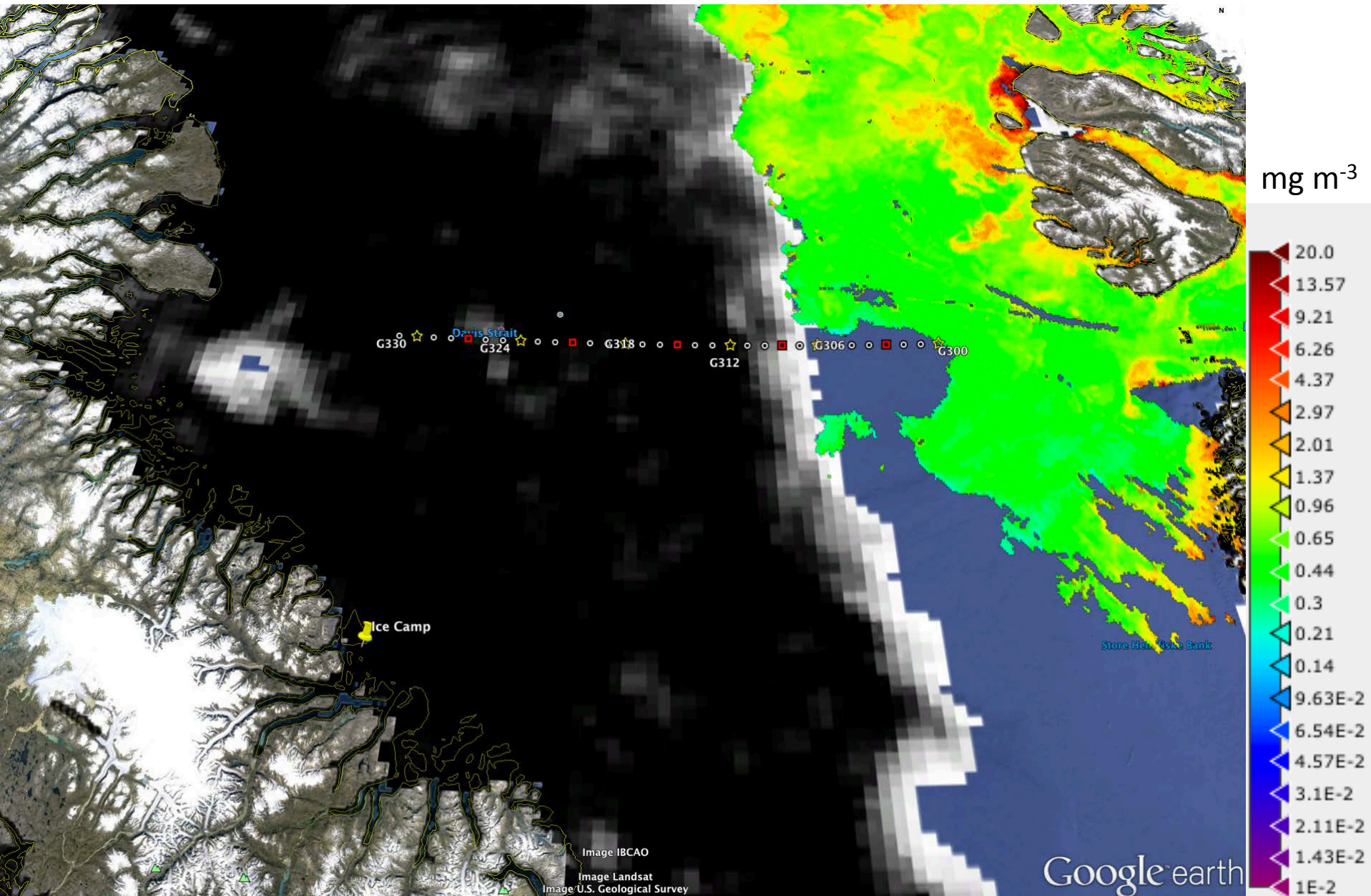
Green Edge Amundsen

# Comments

- Sentinel-1 is still not functional. I would not recommend downloading <http://gliders.takuvik.ulaval.ca/ice/S12/S1-2016-06-20-68-60-100.tif> because it doesn't contain any data.
- The Sentinel-2 image <http://gliders.takuvik.ulaval.ca/ice/S12/S2-2016-06-20-70-61-50.tif> ( 5 1 2 M B ) c o n t a i n s d a t a . S e e a p r e v i e w a t [http://www.greenedgeproject.info/images/Data/SatelliteImages\\_20160621.pdf](http://www.greenedgeproject.info/images/Data/SatelliteImages_20160621.pdf), page 6. I created a regional subset to reduce the size of this image without affecting the resolution. S e e a p r e v i e w o f t h i s r e g i o n a l s u b s e t a t [http://www.greenedgeproject.info/images/Data/SatelliteImages\\_20160621.pdf](http://www.greenedgeproject.info/images/Data/SatelliteImages_20160621.pdf), page 7. I would recommend downloading this regional subset. It is on the FTP server of Québec-Océan.

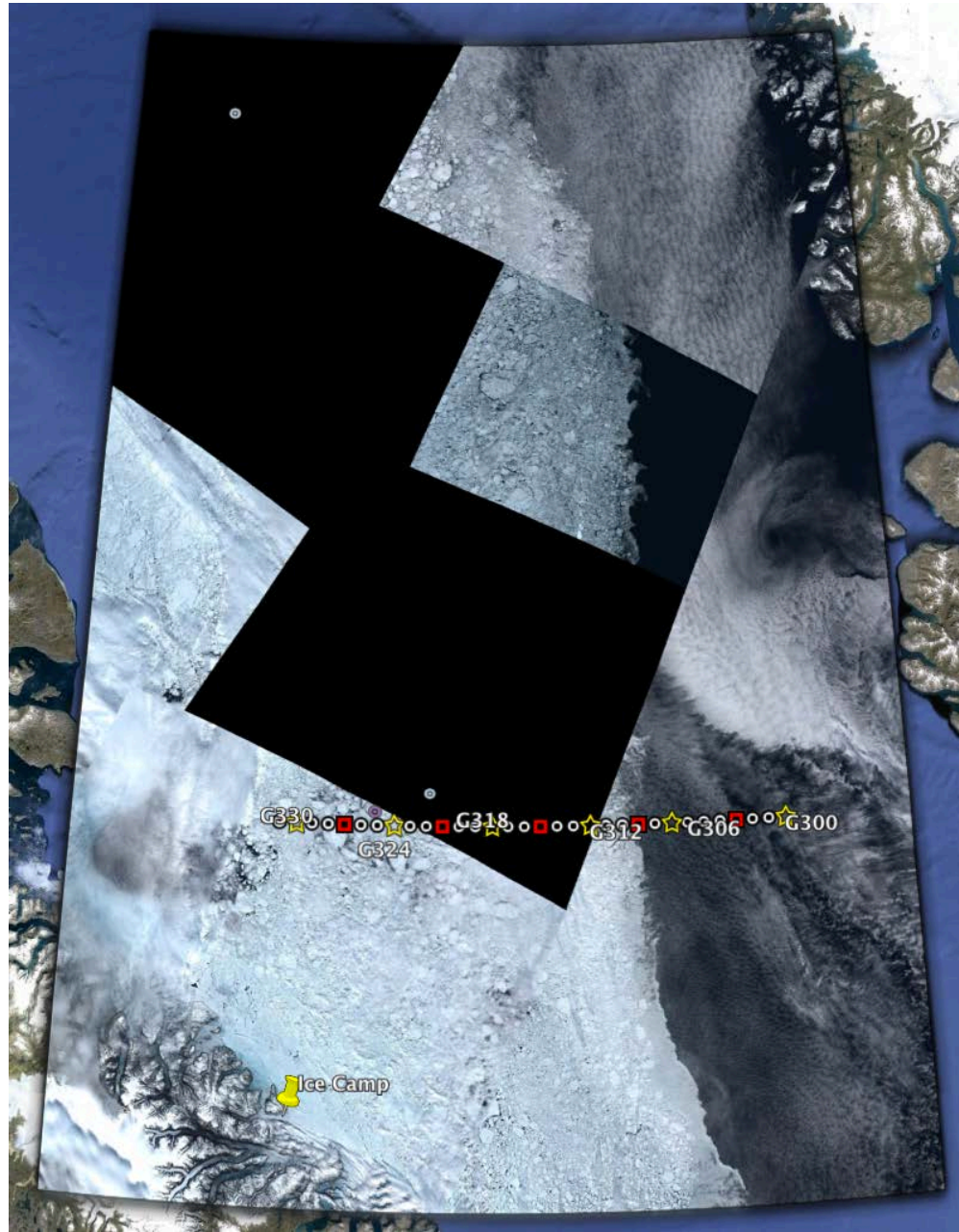
June 20<sup>th</sup>

# AMSR2 sea-ice concentration and MODIS chlorophyll-a concentration



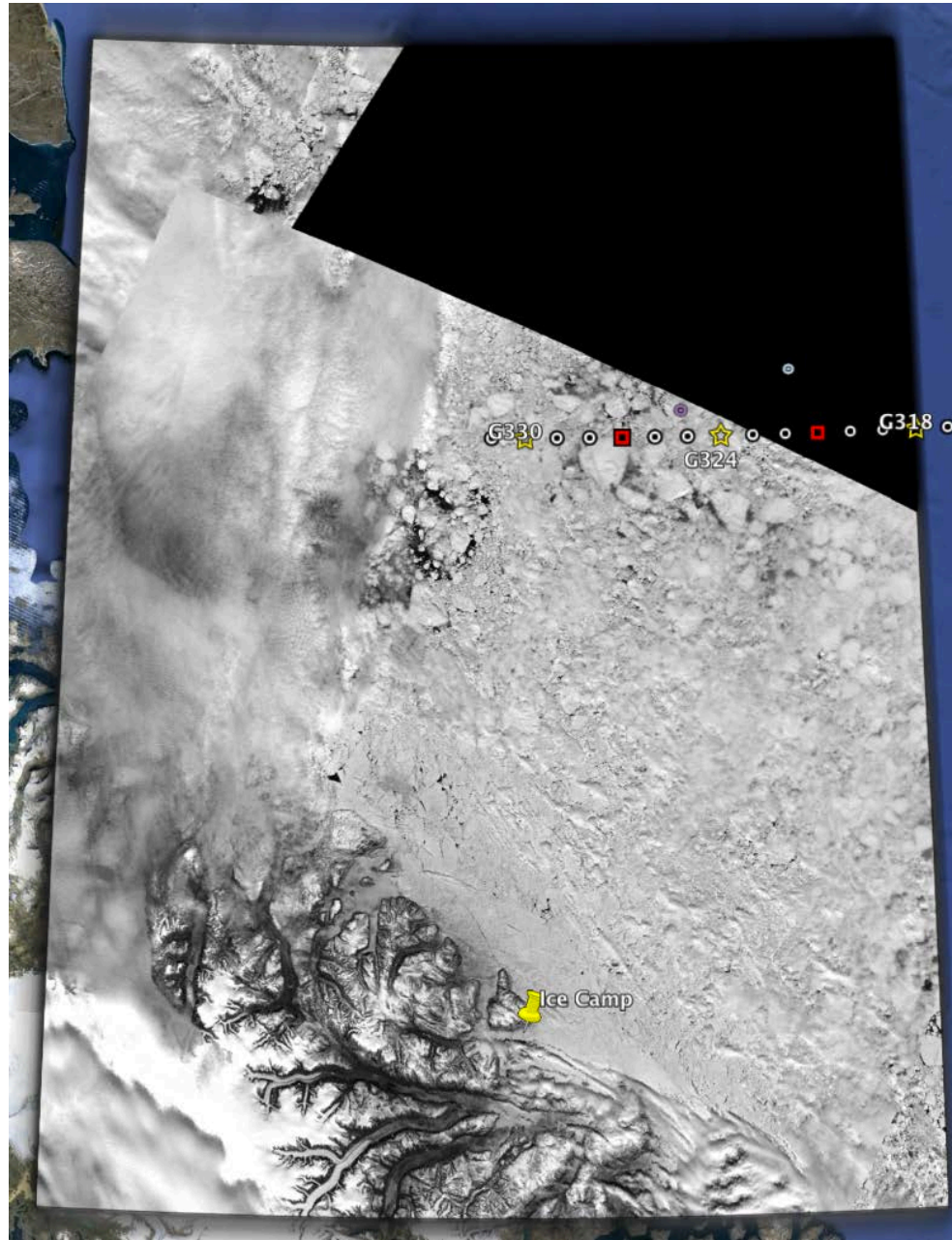
June 20<sup>th</sup>

Sentinel-2 (S2-2016-06-20-70-61-50.tif, 537 MB)



June 20<sup>th</sup>

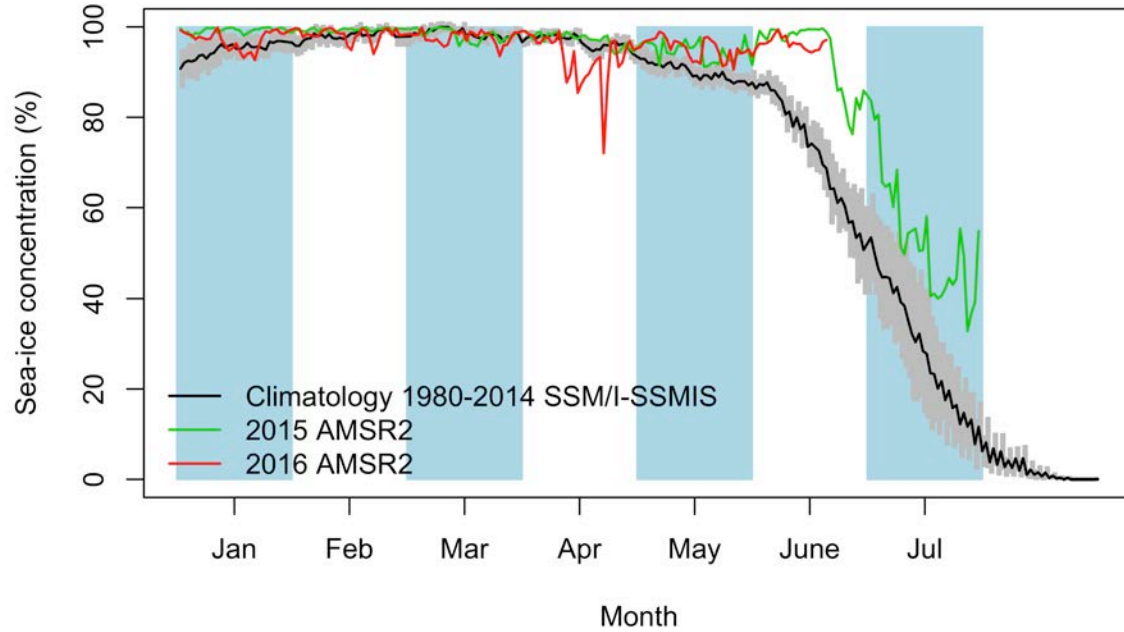
Sentinel-2 (subset\_0\_of\_S2-2016-06-20-70-61-50.tif, 268 MB)



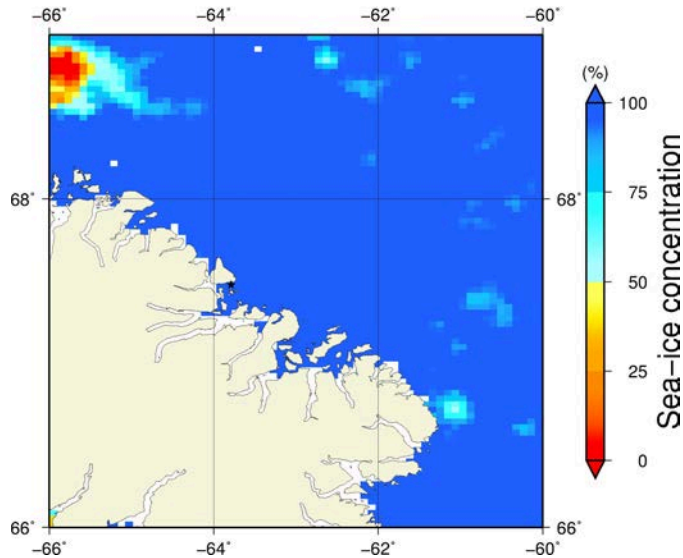
# Green Edge Ice Camp



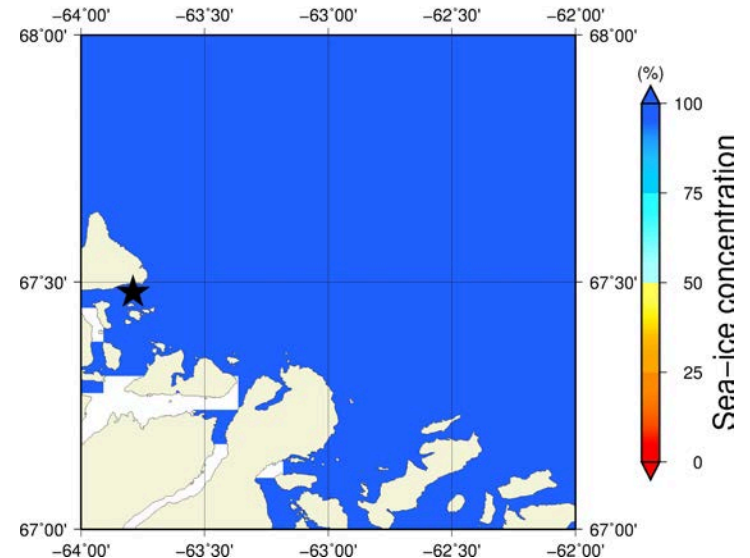
# June 20<sup>th</sup> (AMSR2) Sea - ice concentration in the region 66° to 69°N and -66° to -60°E



**Overview**



**Zoom**



June 20<sup>th</sup> (MODIS)

