

Green Edge Amundsen

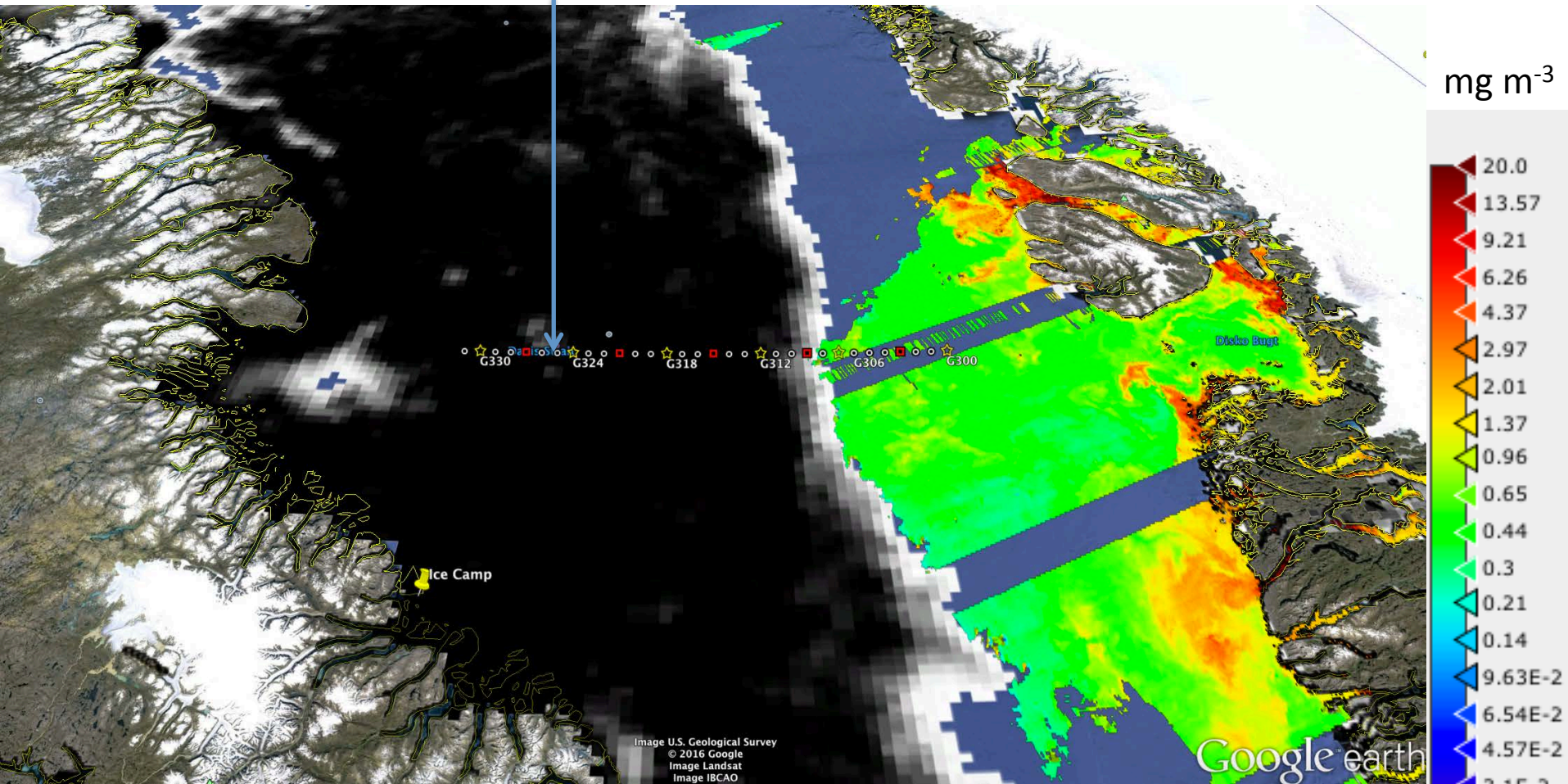
Comments

- The ship track of stations G300 is available at <https://goo.gl/SwM77o> as file Stations G300.kmz.
- The ship was at station G312 on June 19th. The ship will continue navigating into sea ice in opposite direction of the marginal ice zone. It should encounter an area with less sea ice at station G325.
- Sentinel-1 is still not functional. I would not recommend downloading <http://gliders.takuvik.ulaval.ca/ice/S12/S1-2016-06-19-68-60-100.tif> because it doesn't contain any data.

June 19th

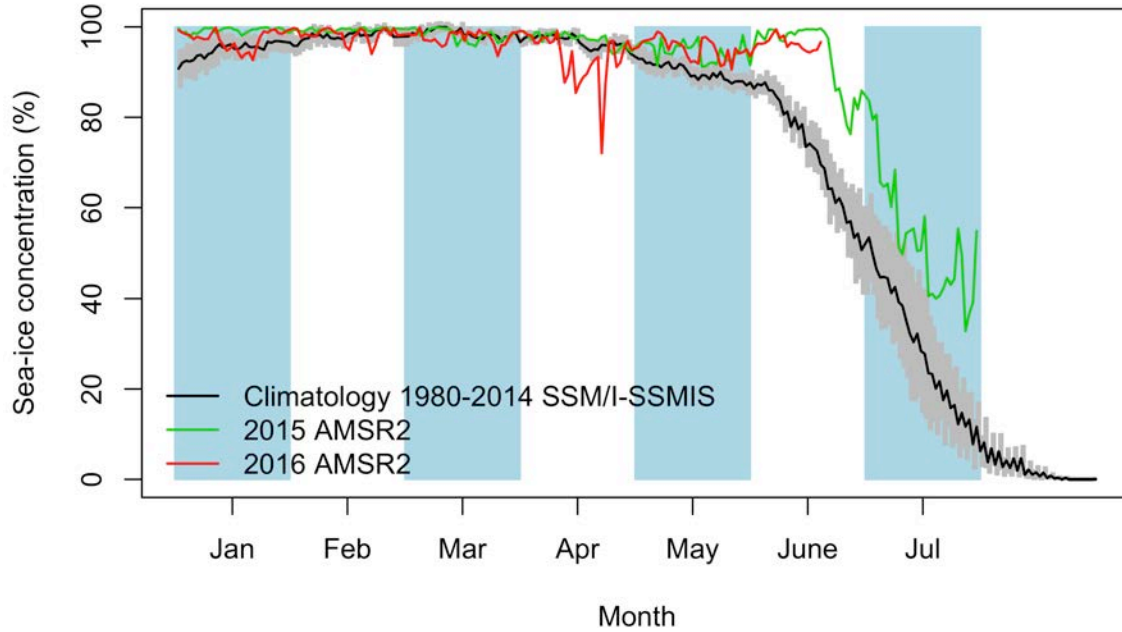
AMSR2 sea-ice concentration and MODIS chlorophyll-a concentration

Station G325

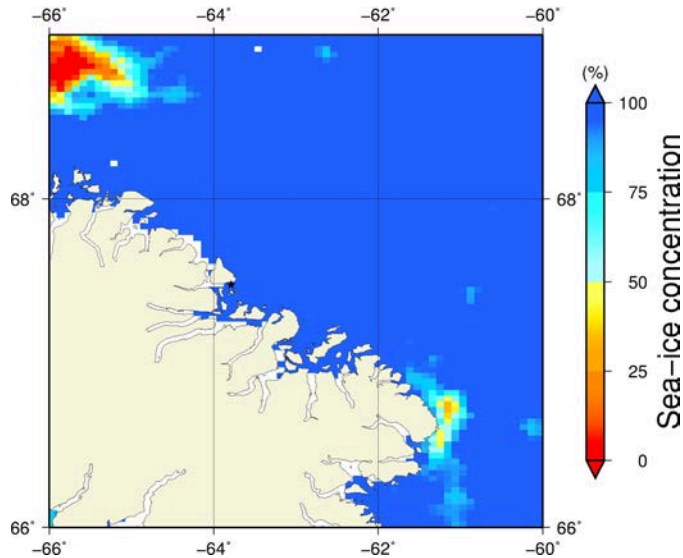


Green Edge Ice Camp

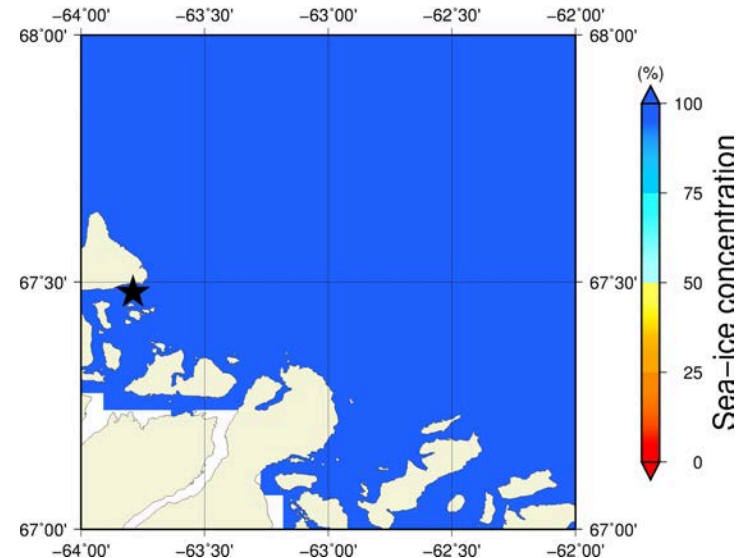
June 19th (AMSR2) Sea-ice concentration in the region 66° to 69°N and -66° to -60°E



Overview



Zoom



June 19th (MODIS)

