

Green Edge General

Comments

- Sentinel-1 tweeted on June 18th at 2:29 AM (EDT): *Sentinel1 imagery is currently unavailable due to a satellite anomaly. The issue is being investigated and an update is expected on Monday.* See <https://twitter.com/PolarViewStatus>. I will keep you posted about the developments.
- The website <http://gliders.takuvik.ulaval.ca/ice/S12> contains mosaic Sentinel-1 images of the last days. It is why we still have one image S1-2016-06-18-68-60-100.tif available for June 18th but the footprint is incomplete.
- This image doesn't contain newer data than the image of the June 17th. I would not recommend downloading this image on the Amundsen because of the limited bandwidth. There is a preview of the image on page 6 of the report *SatelliteImages_20160619.pdf* available at <http://www.greenedgeproject.info/data.php>.

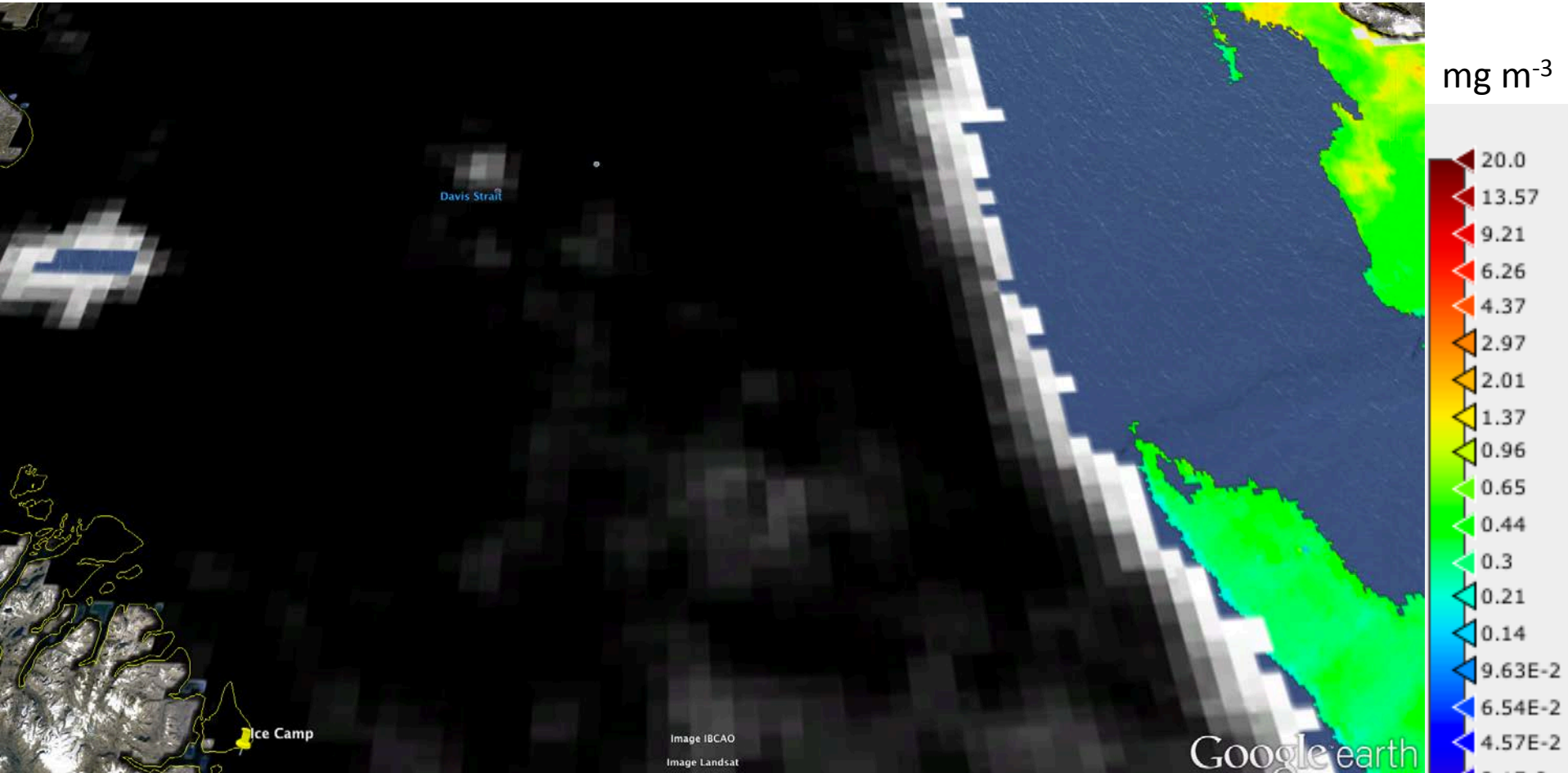
Green Edge Amundsen

Comments

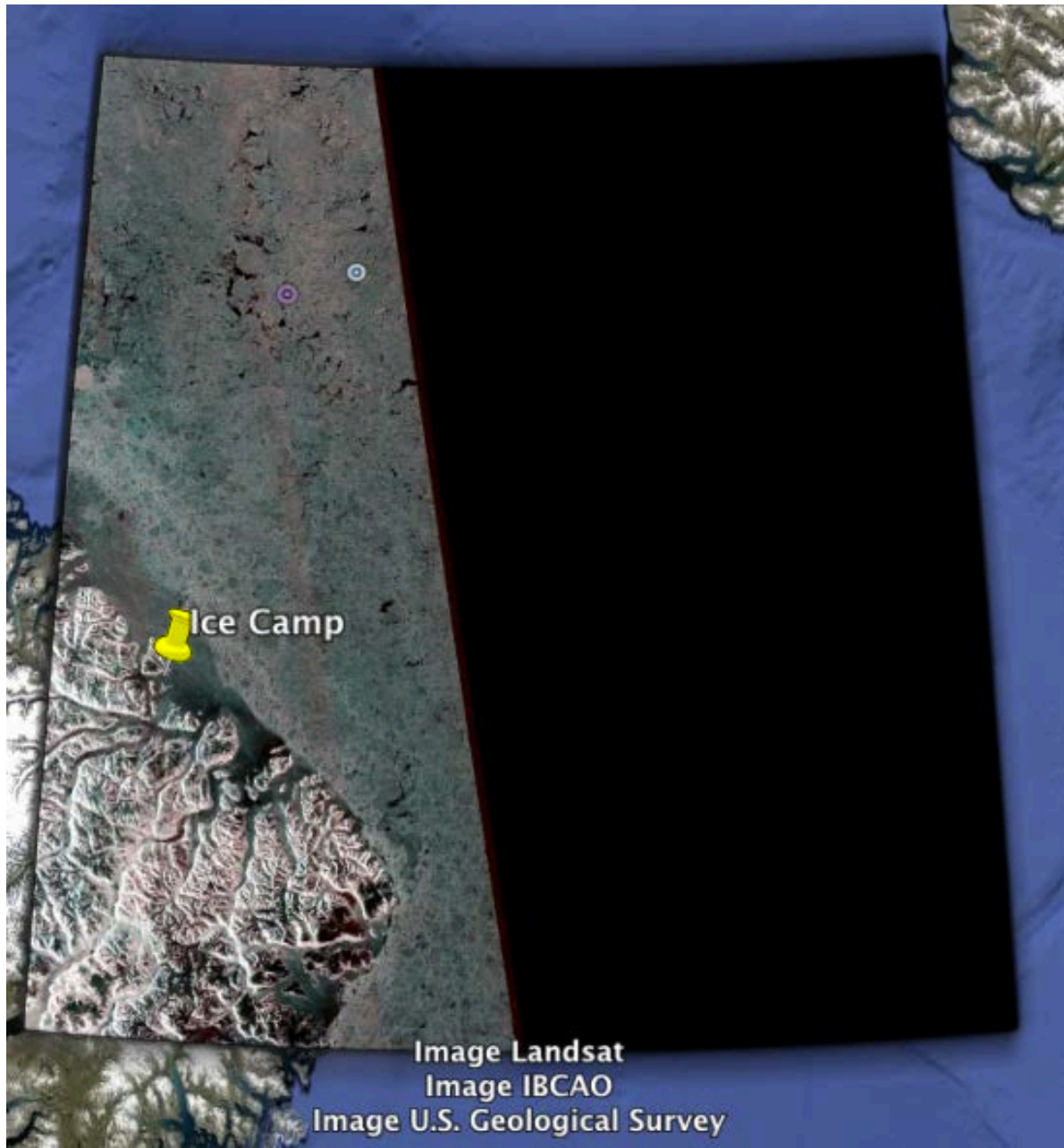
- There is chlorophyll-a concentration data near the marginal ice zone.

June 18th

AMSR2 sea-ice concentration and MODIS chlorophyll-a concentration



June 18th
Sentinel-1 sea ice

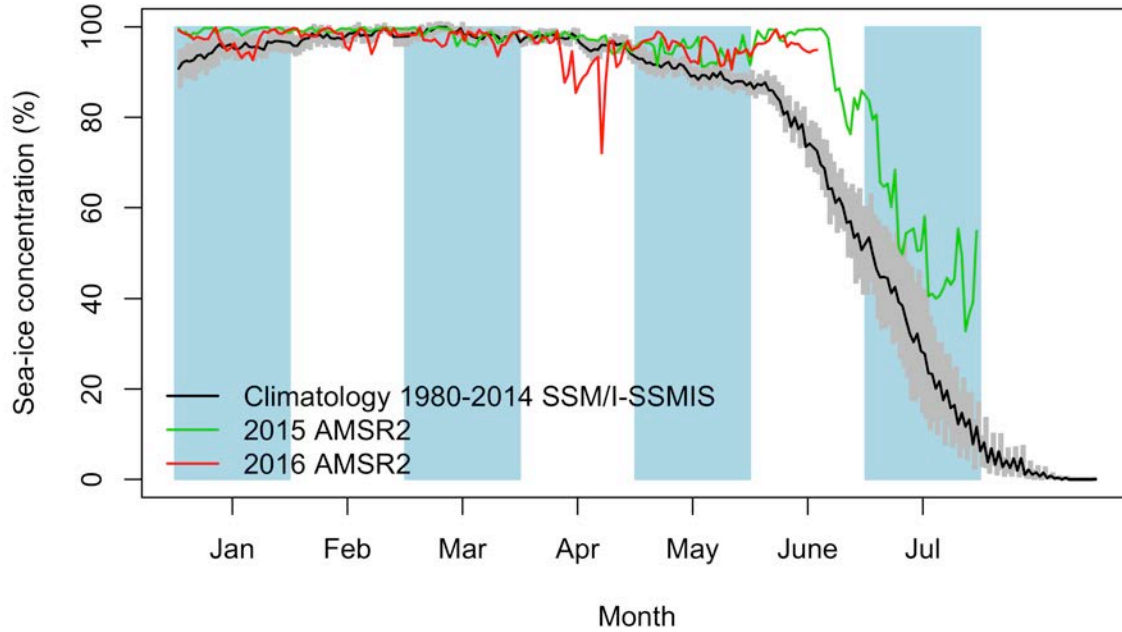


Ice Camp

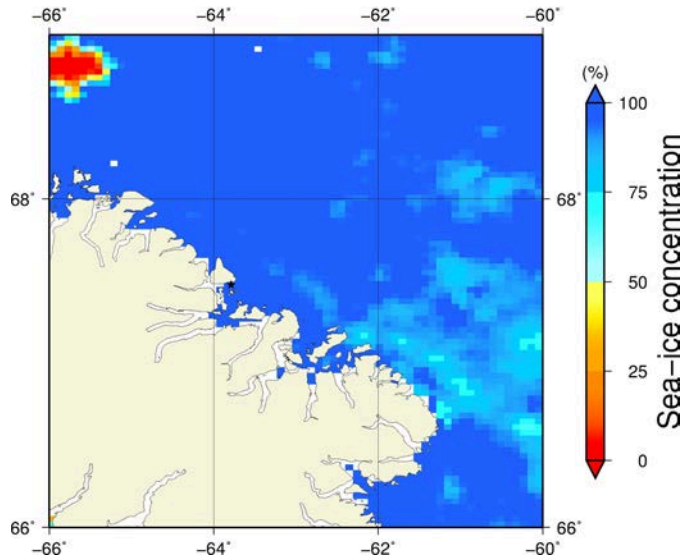
Image Landsat
Image IBCAO
Image U.S. Geological Survey

Green Edge Ice Camp

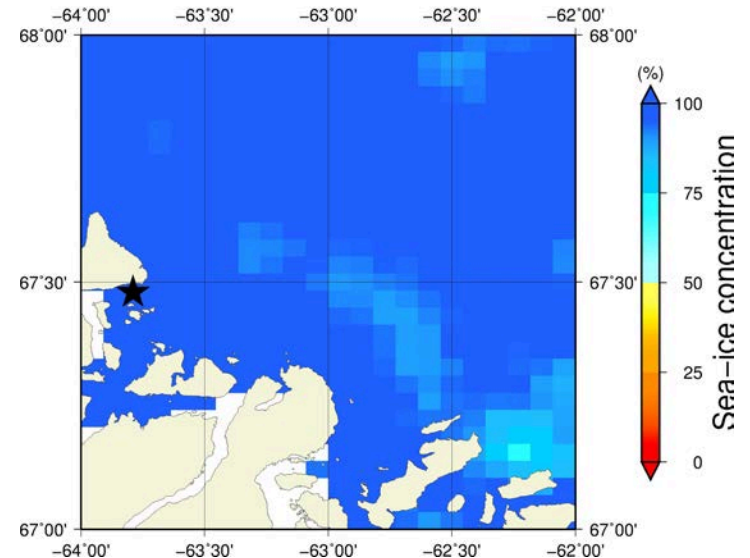
June 18th (AMSR2) Sea - ice concentration in the region 66° to 69°N and -66° to -60°E



Overview



Zoom



June 18th (MODIS)

