

Green Edge Amundsen

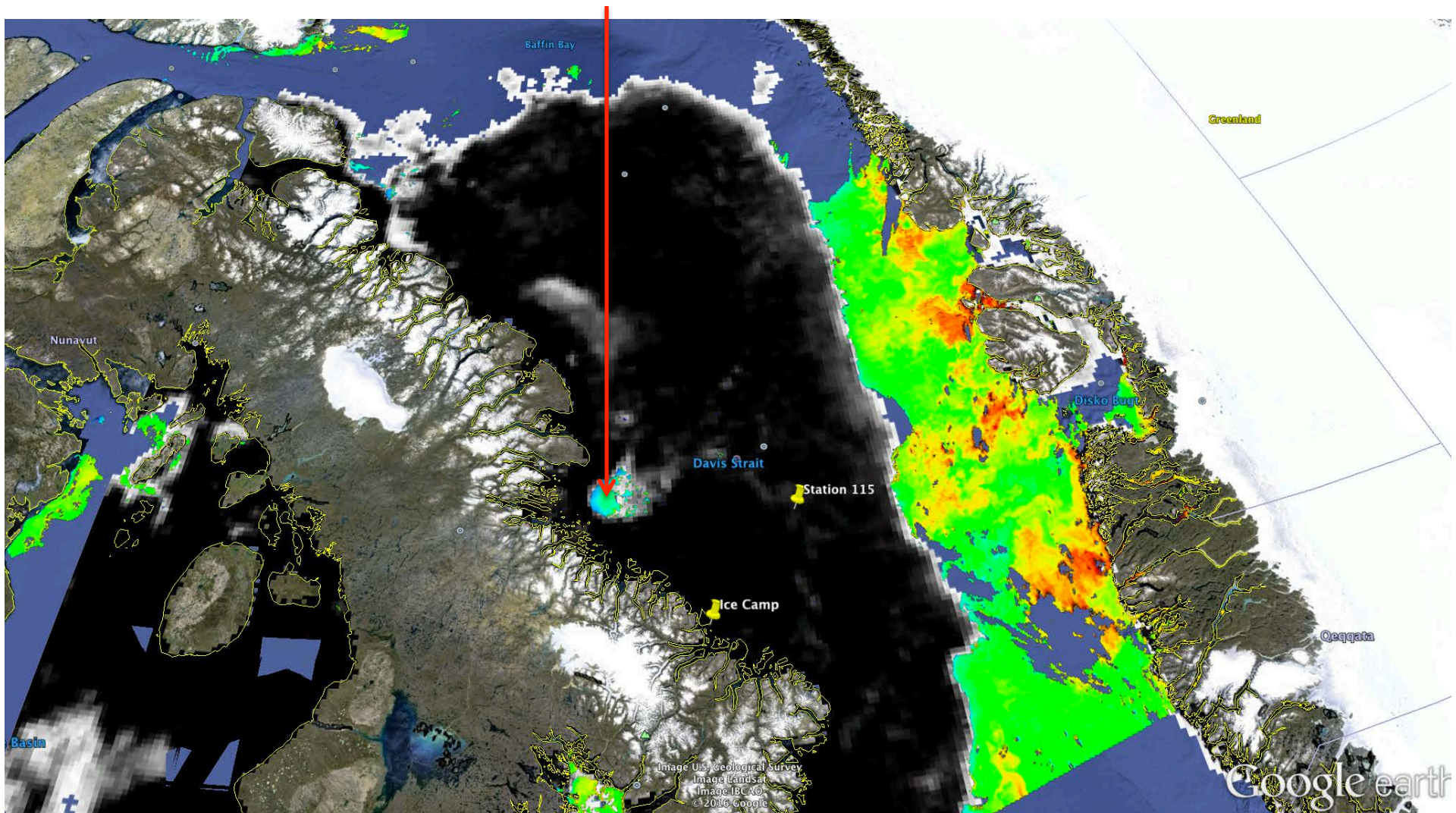
Comments

- We see chlorophyll-a concentration data in Home Bay open waters.
- There are two high-resolution sea ice Sentinel-1 images of Davis Strait for June 13th:
 - S1A_EW_GRDM_1SDH_20160613T214402_EC1B_N_1.tif (East)
 - S1A_EW_GRDM_1SDH_20160613T102451_449B_N_1.tif (West)

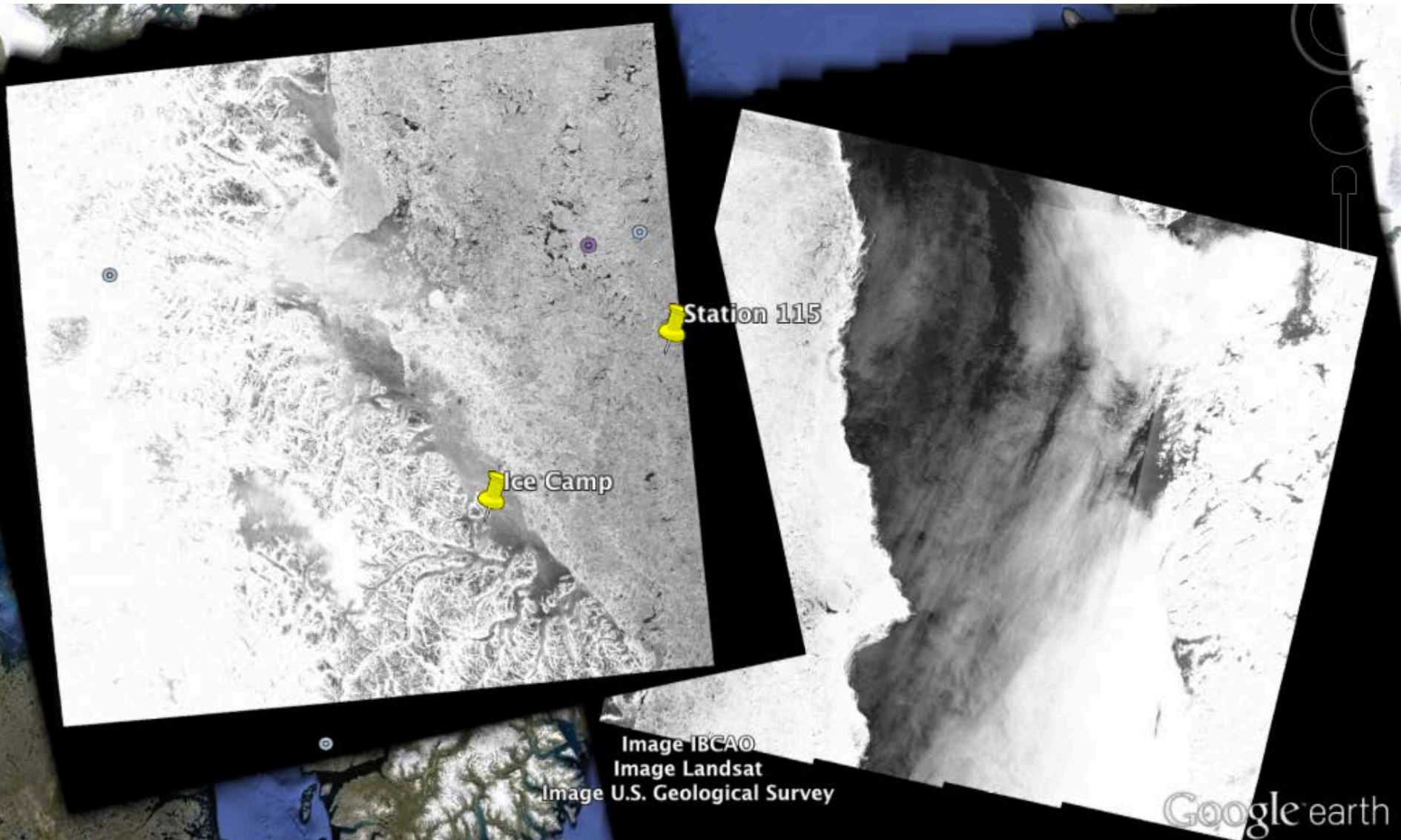
June 13th

AMSR2 sea-ice concentration and MODIS chlorophyll-a concentration

Home Bay Open waters



June 13th
Sentinel-1 sea ice

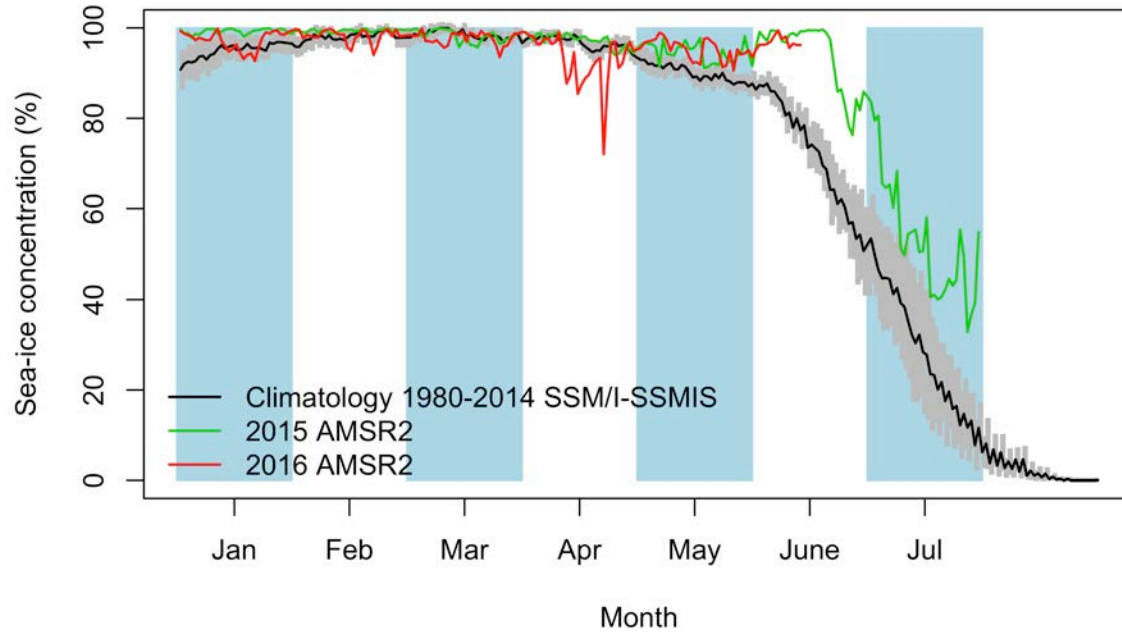


Green Edge Ice Camp

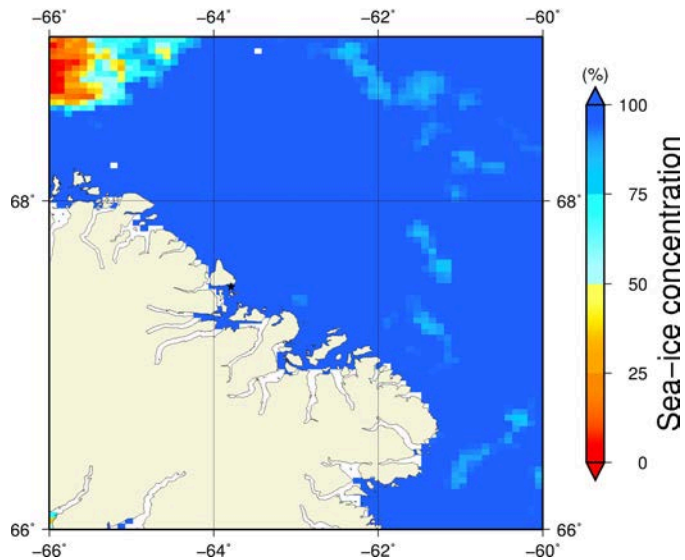
Comments

- The distance between the marginal ice zone in Home Bay and the ice camp is now 127.8 km. It was 153.5 km on June 2nd.
- The distance between the land-fast ice edge and the ice camp was only decreased from 25.0 km to 24.3 km from April 22nd to June 13th.

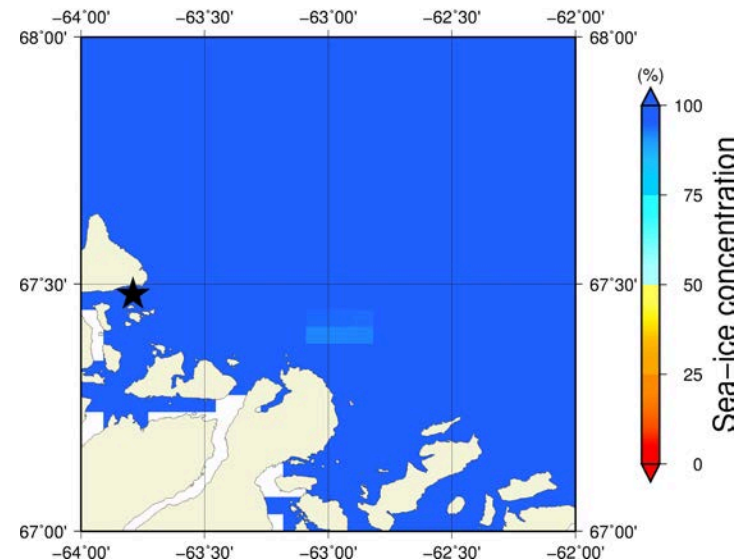
June 13th (AMSR2) Sea – ice concentration in the region 66° to 69°N and –66° to –60°E



Overview



Zoom



June 13th (MODIS)



June 13th (Sentinel-1)

