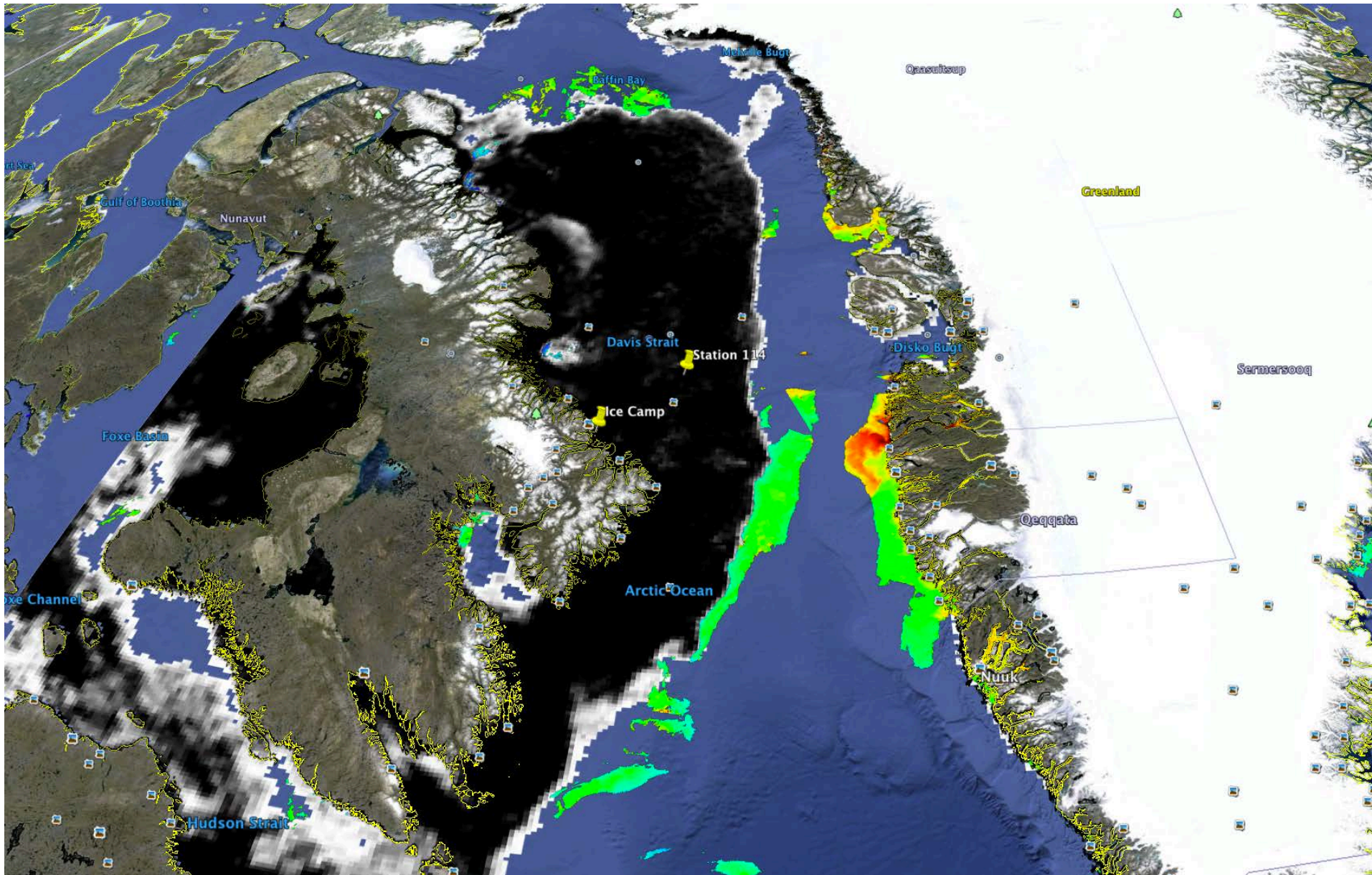


Green Edge Amundsen

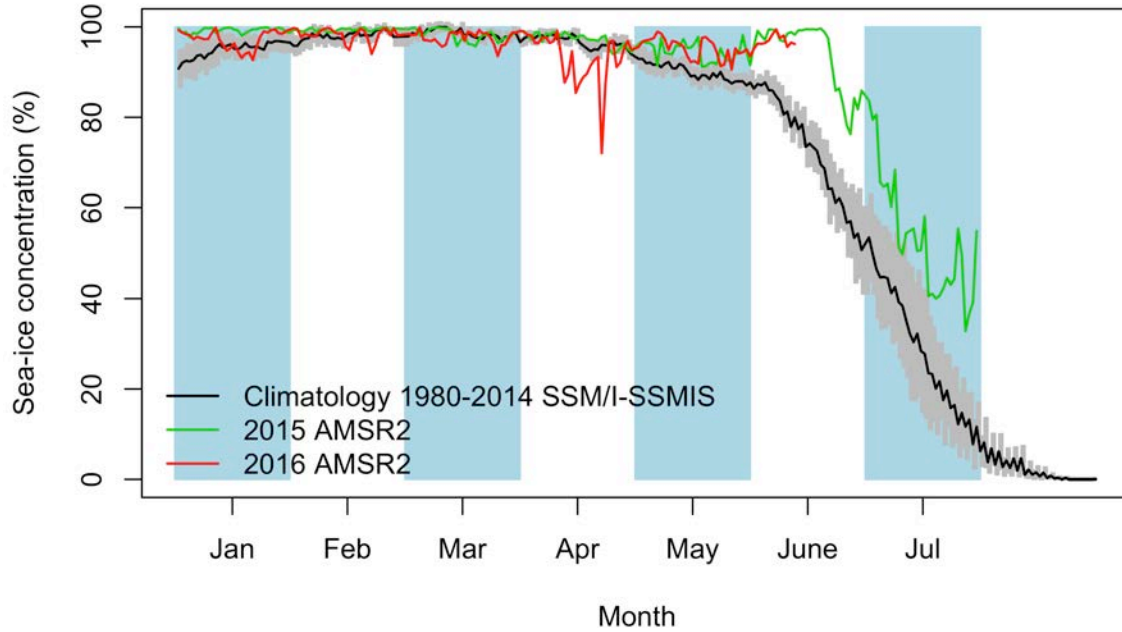
June 12<sup>th</sup>

# AMSR2 sea-ice concentration and MODIS chlorophyll-a concentration

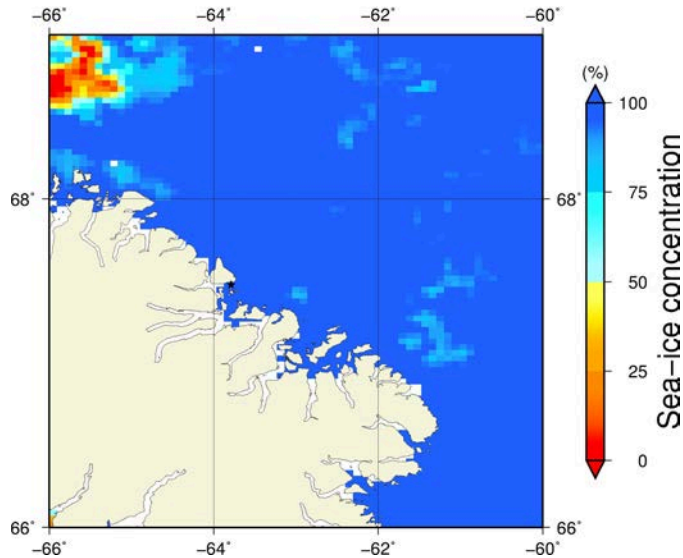


# Green Edge Ice Camp

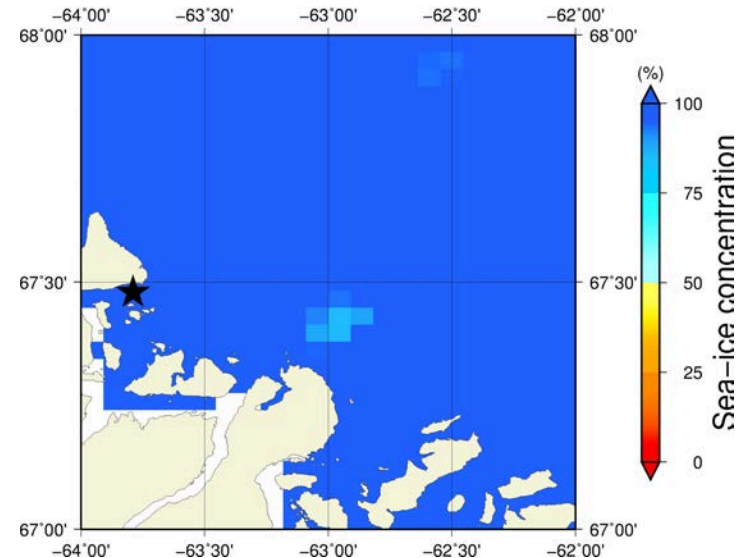
# June 12<sup>th</sup> (AMSR2) Sea - ice concentration in the region 66° to 69°N and -66° to -60°E



**Overview**



**Zoom**



June 12<sup>th</sup> (MODIS)

