

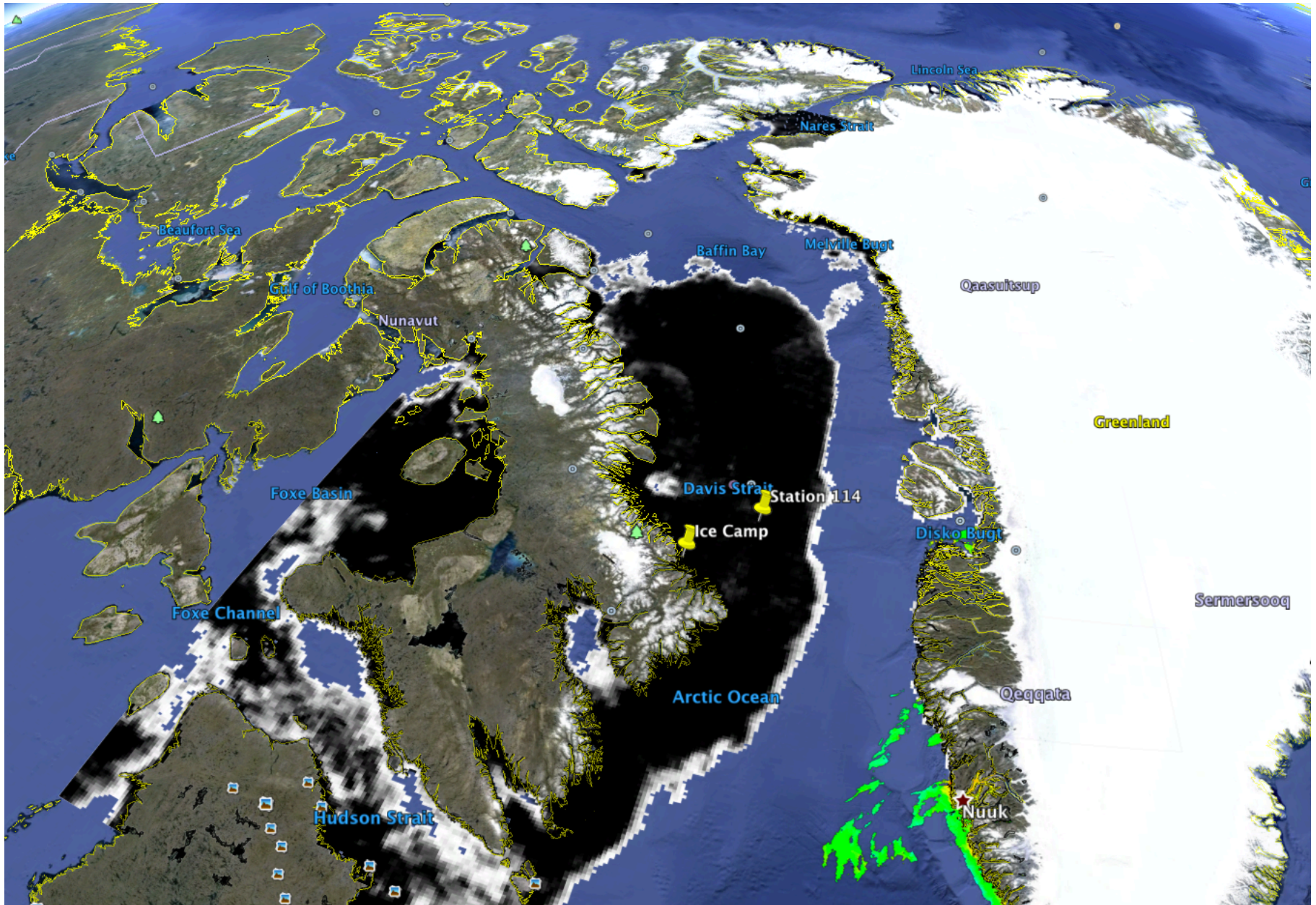
Green Edge Amundsen

Comments

- High-resolution sea ice from Sentinel-1 is available as file S1A_EW_GRDM_1SDH_20160611T104117_9232_N_1.tif at <https://goo.gl/SwM77o>. This file will remain on my Dropbox until a new Sentinel-1 image is available.
- Note that there is not a good contrast of color between the sea ice and the open water when we open this image in Google Earth Pro.

June 11th

AMSR2 sea-ice concentration and MODIS chlorophyll-a concentration

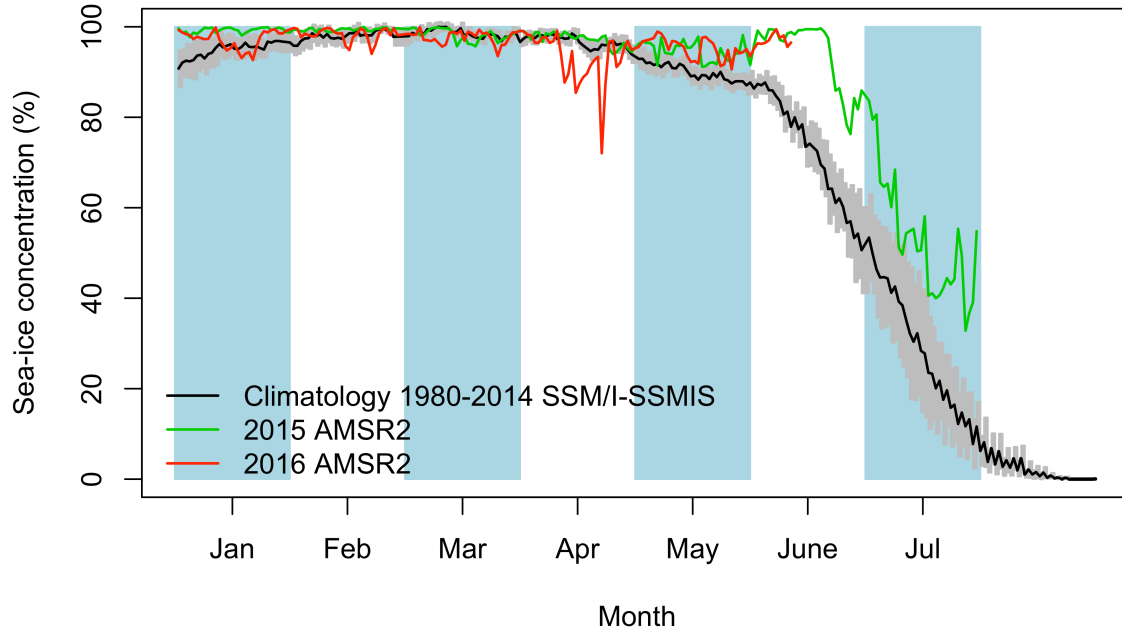


June 11th
Sentinel-1 sea ice

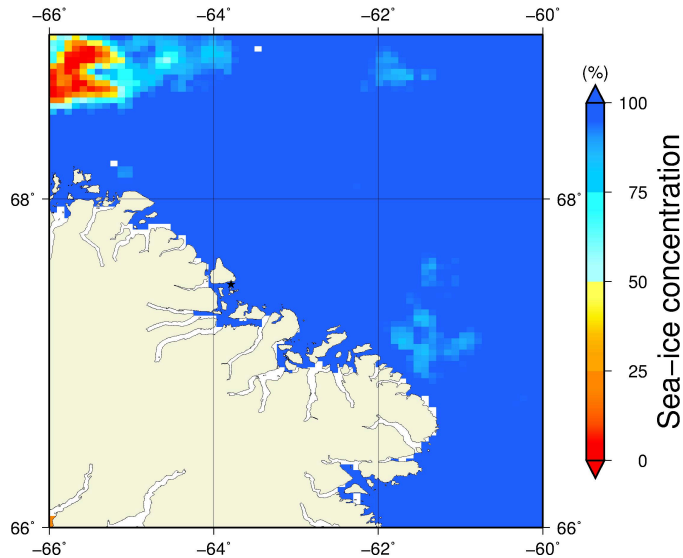


Green Edge Ice Camp

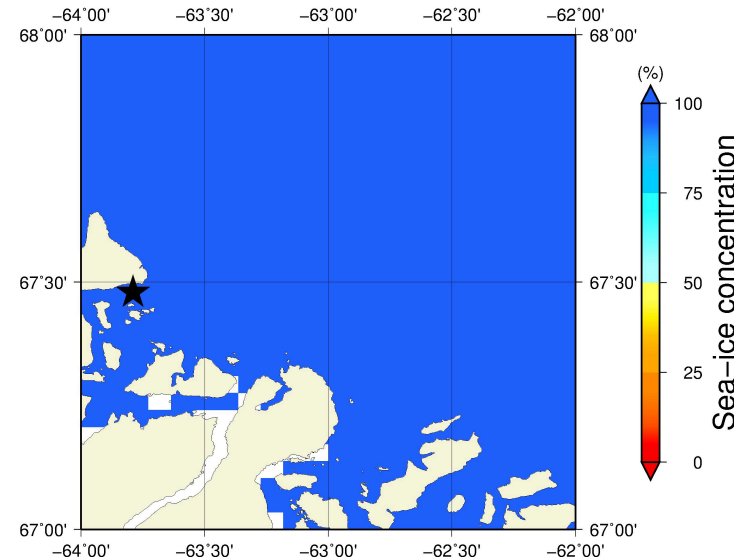
June 11th (AMSR2) Sea - ice concentration in the region 66° to 69°N and -66° to -60°E



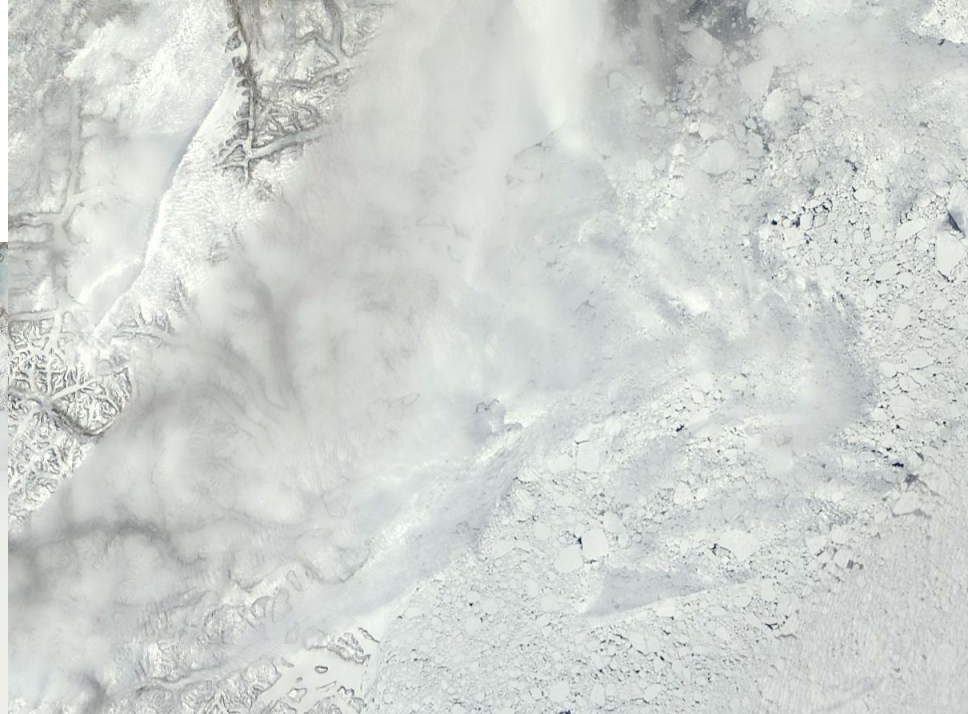
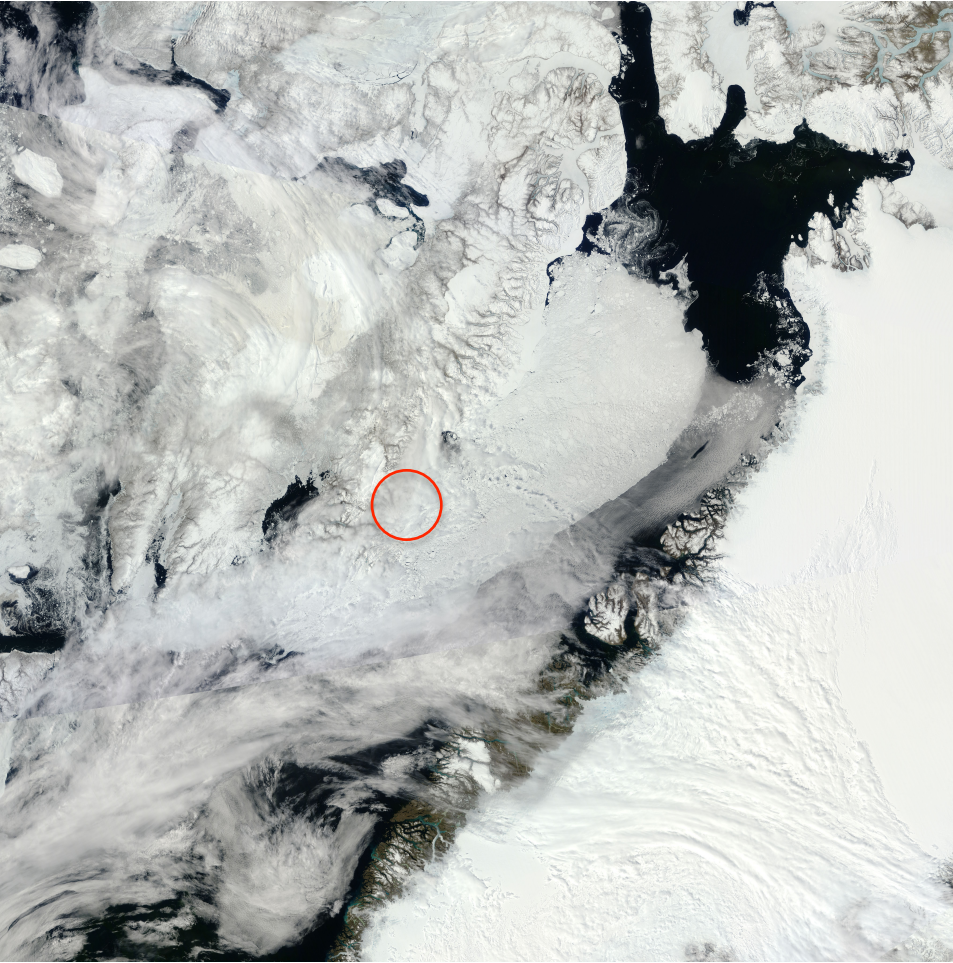
Overview



Zoom



June 11th (MODIS)



June 11th (Sentinel-1)

