

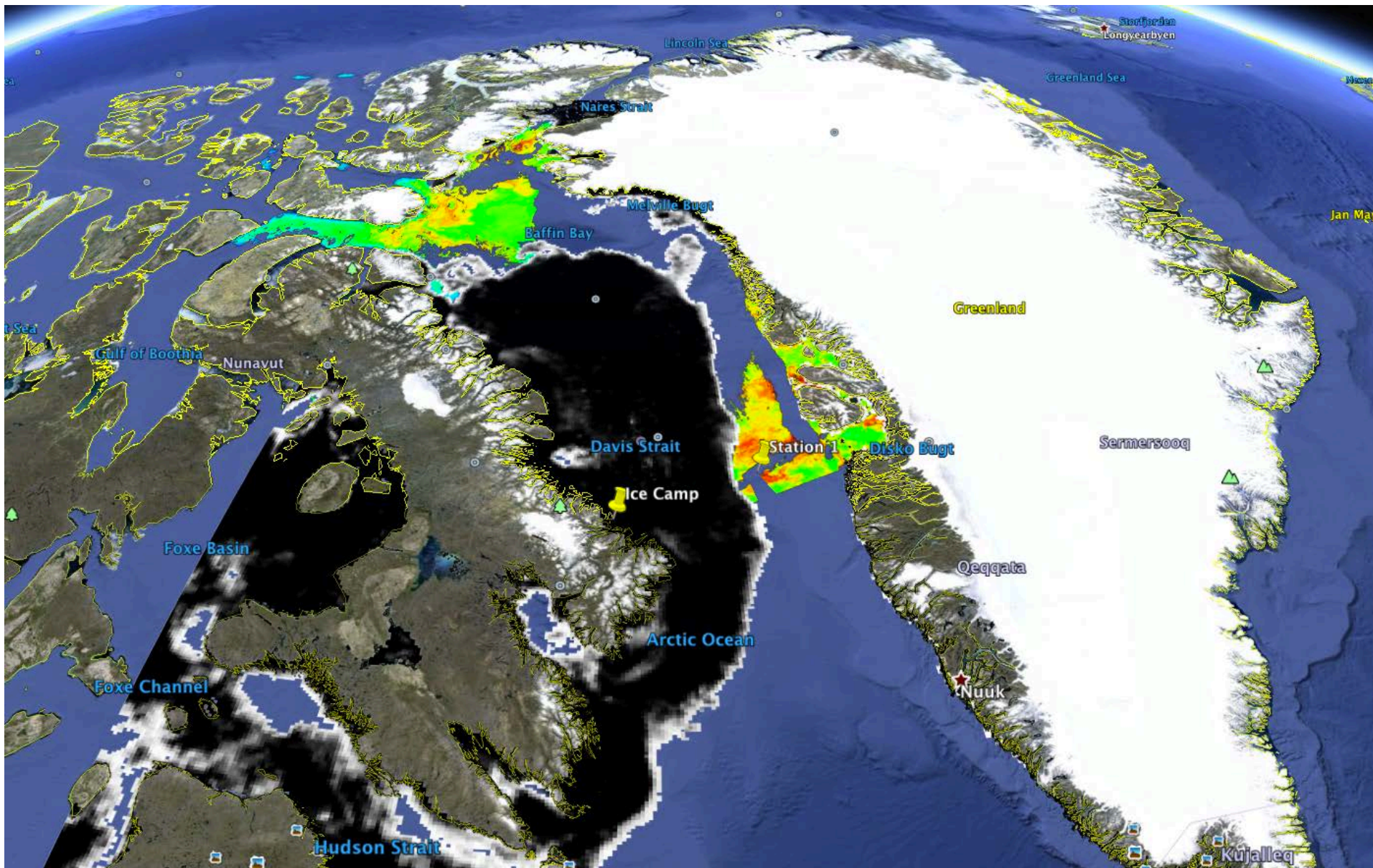
Green Edge Amundsen

Comments

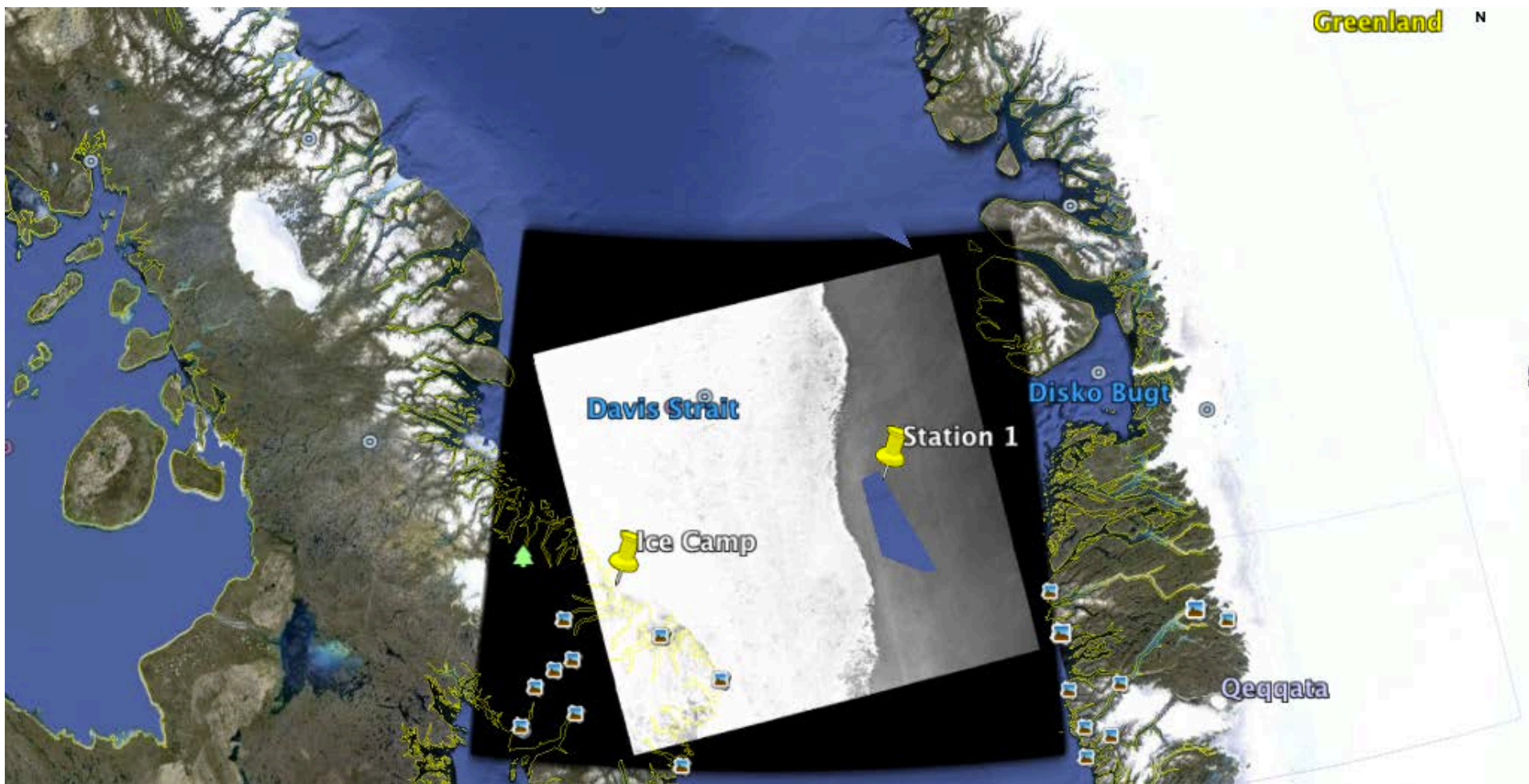
- Chlorophyll-a concentration data contains data around station 1. See file A2016162160000_L2_LAC_OC.kmz at <https://goo.gl/SwM77o>.
- High-resolution sea ice from Sentinel-1 for station 1 is available at <https://goo.gl/SwM77o>. File S1A_EW_GRDM_1SDH_20160610T211921_F7A7_N_1_S1_meridian_changed.tif (164 MB) has full spatial coverage available from Polar View. File subset_0_of_S1A_EW_GRDM_1SDH_20160610T211921_F7A7_N_1.tif (230 KB) has a spatial coverage of 1 degree in latitude and 5 degrees in longitude around station 1. File S1A_EW_GRDM_1SDH_20160610T211921_F7A7_N_1_S1_meridian_changed.tif will remain available at <https://goo.gl/SwM77o> one week. Both files can be opened in Google Earth Pro.

June 10th

AMSR2 sea-ice concentration and MODIS chlorophyll-a concentration



June 10th
Sentinel-1 sea ice

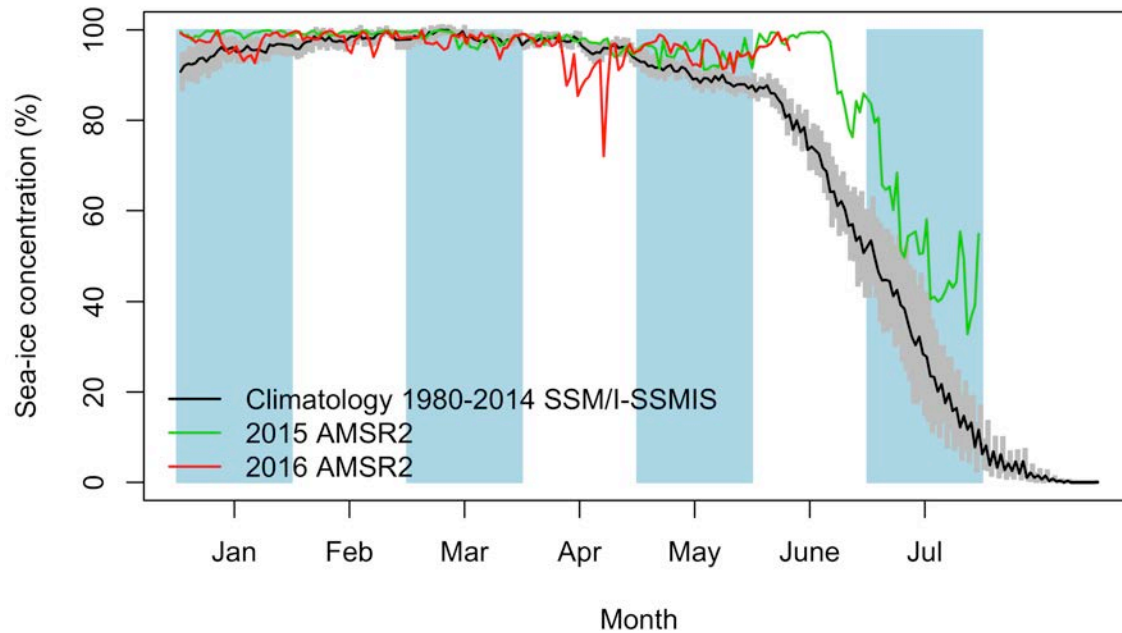


Green Edge Ice Camp

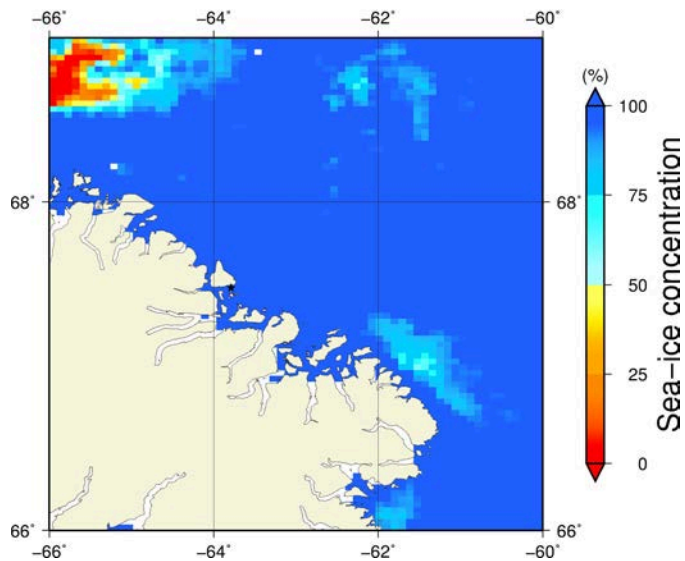
Comments

- The Sentinel-1 image recovers the ice camp too. The distance between the marginal ice zone in the middle of Davis Strait and the ice camp is stable since May 29th. This distance decreased from 294.0 km (May 5th) to 287.3 km (May 10th) to 248.4km (May 17th) to 245.1 km (May 18th) to 252.3 km (May 22nd) to 233.4 km (May 29th) to 232.2 km (June 10th).

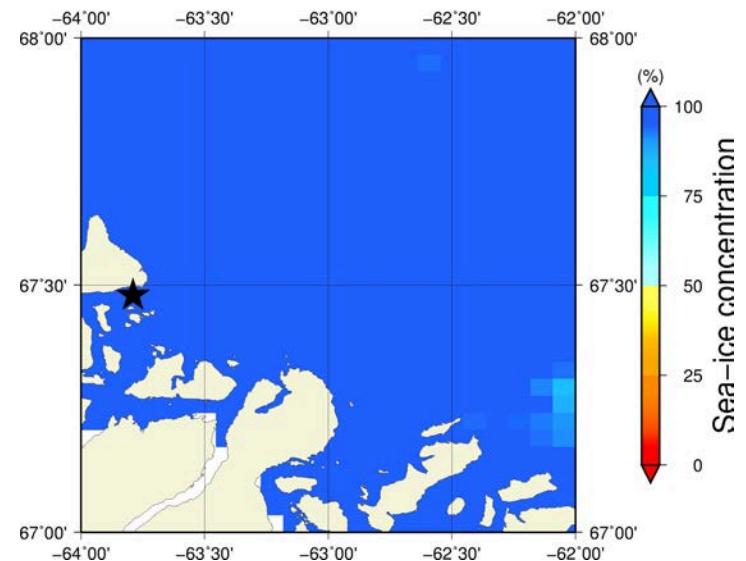
June 10th (AMSR2) Sea – ice concentration in the region 66° to 69°N and –66° to –60°E



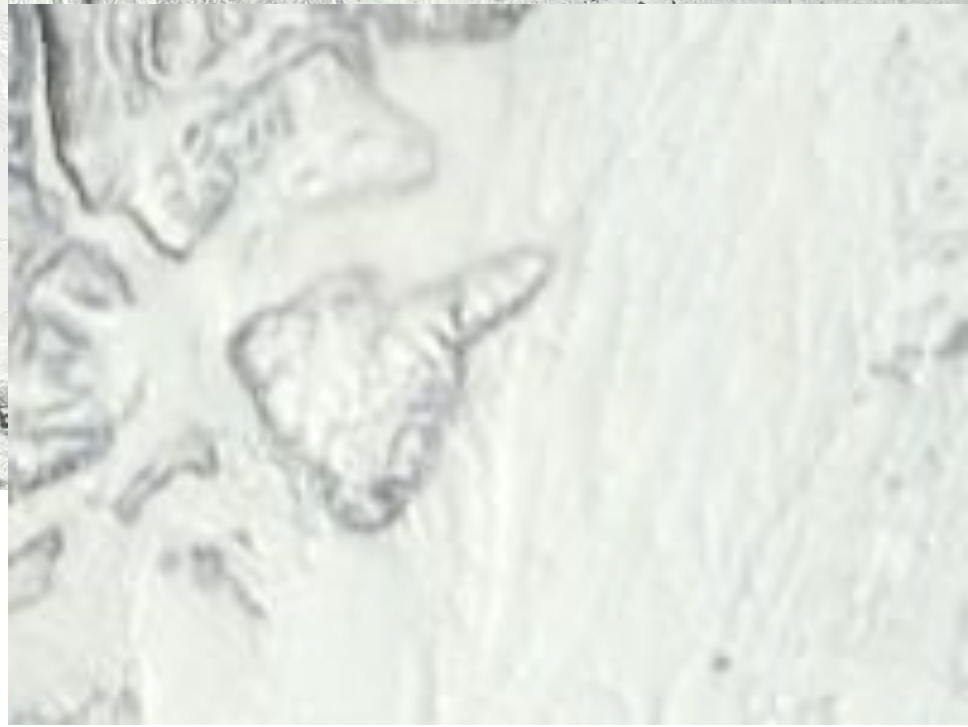
Overview



Zoom



June 10th (MODIS)



April 10th (Sentinel-1)

