

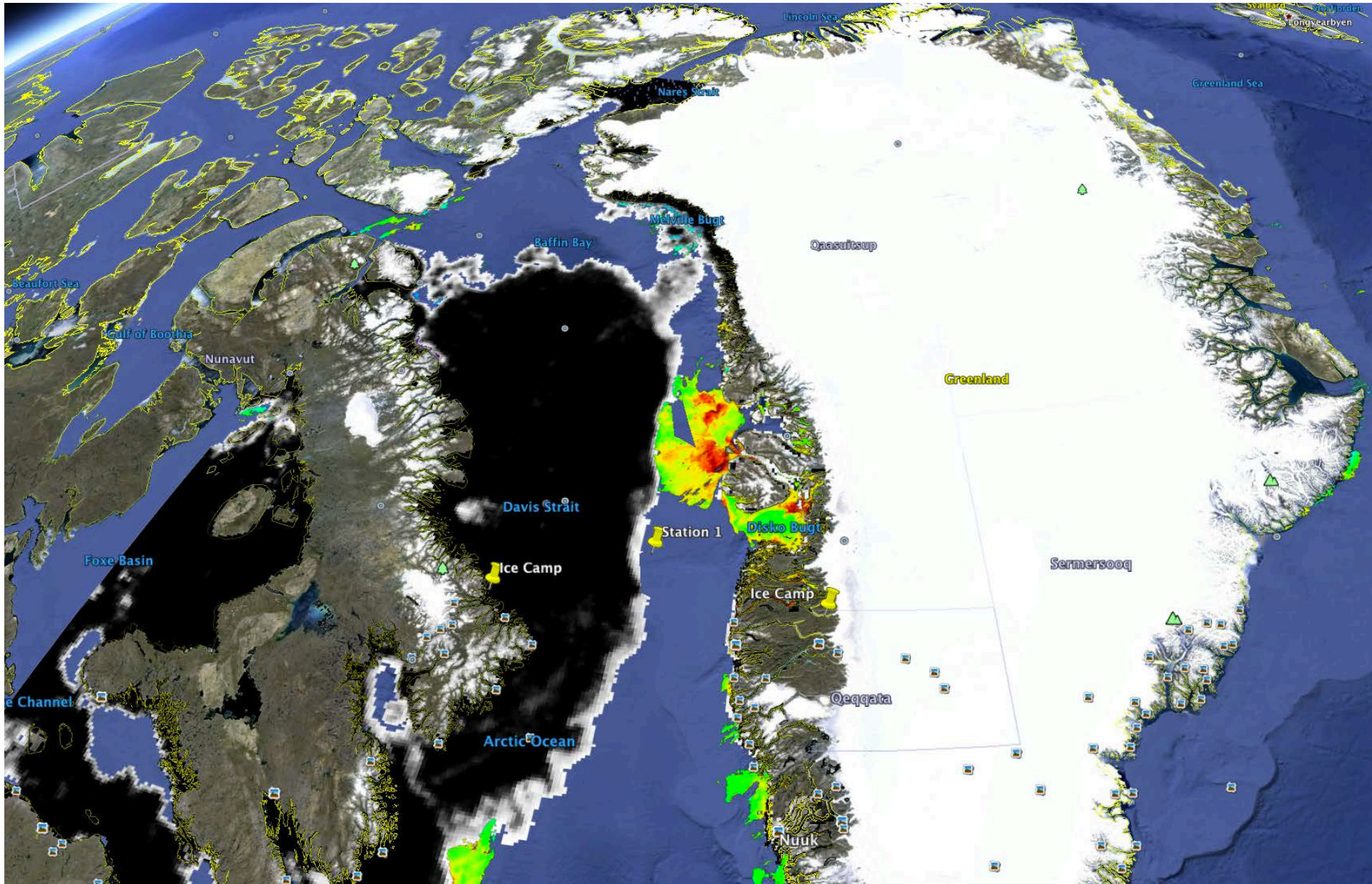
Green Edge Amundsen

Comments

- The resolution of chlorophyll-a concentration was reduced from 4.64 km to 1.1 km. See files *_L2_LAC_OC.kmz on <https://goo.gl/SwM77o>. The model used is always OCI. SST data at 1.1 km resolution is also available. See files *_L2_LAC_SST.kmz.
- Note that a MacBook Pro with a graphic card NVIDIA GeForce GT 330M 512 MB is required to open these kmz files in Google Earth Pro. One user reported that the graphic card Intel HD Graphics 4000 512 MB graphics could not open these kmz files in Google Earth Pro. If you have a 15-inch MacBook Pro, you probably have a graphic card NVIDIA GeForce GT 330M 512 MB. If you have a 13-inch MacBook Pro, you probably have an Intel HD Graphics 4000 512 MB graphics and you will not be able to open the kmz files in the Google Earth Pro installation on your system.
- On the Google Earth Pro screen capture, we see that there is chlorophyll-a concentration data near station 1 for June 9th.

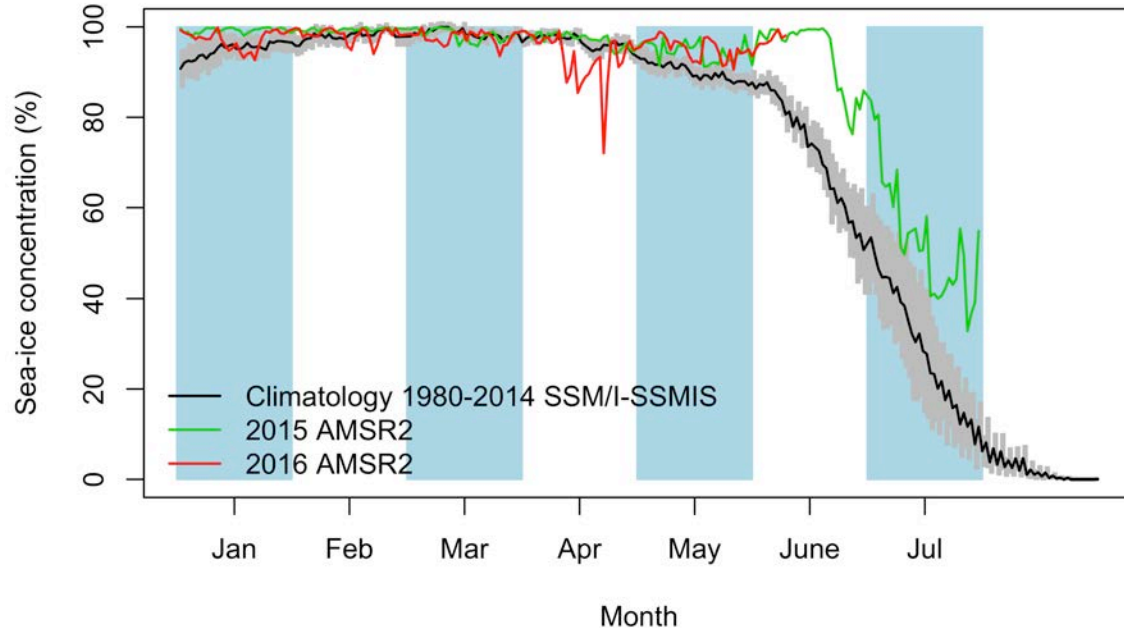
June 9th

AMSR2 sea-ice concentration and MODIS chlorophyll-a concentration

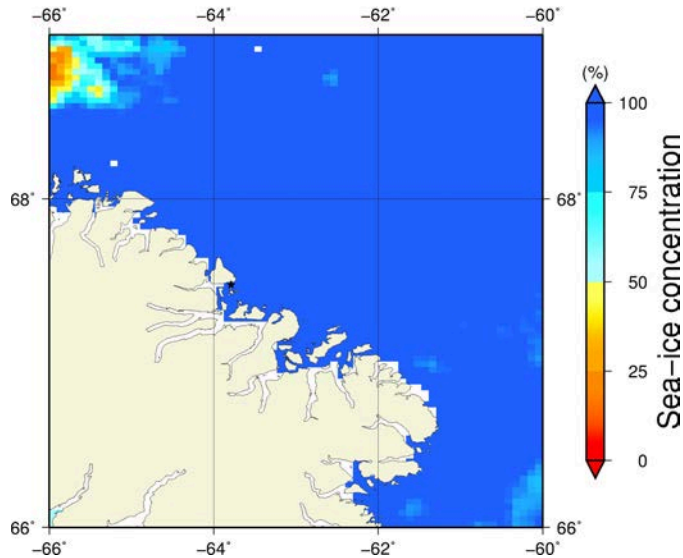


Green Edge Ice Camp

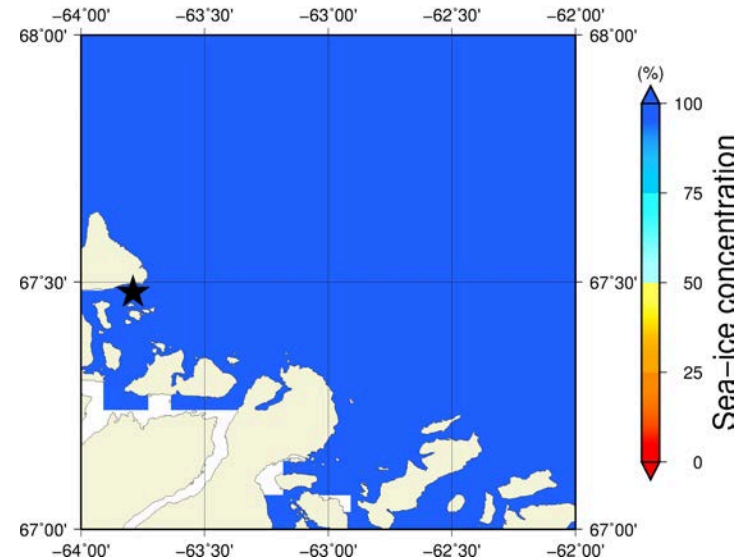
June 9th (AMSR2) Sea-ice concentration in the region 66° to 69°N and -66° to -60°E



Overview



Zoom



June 9th (MODIS)

