

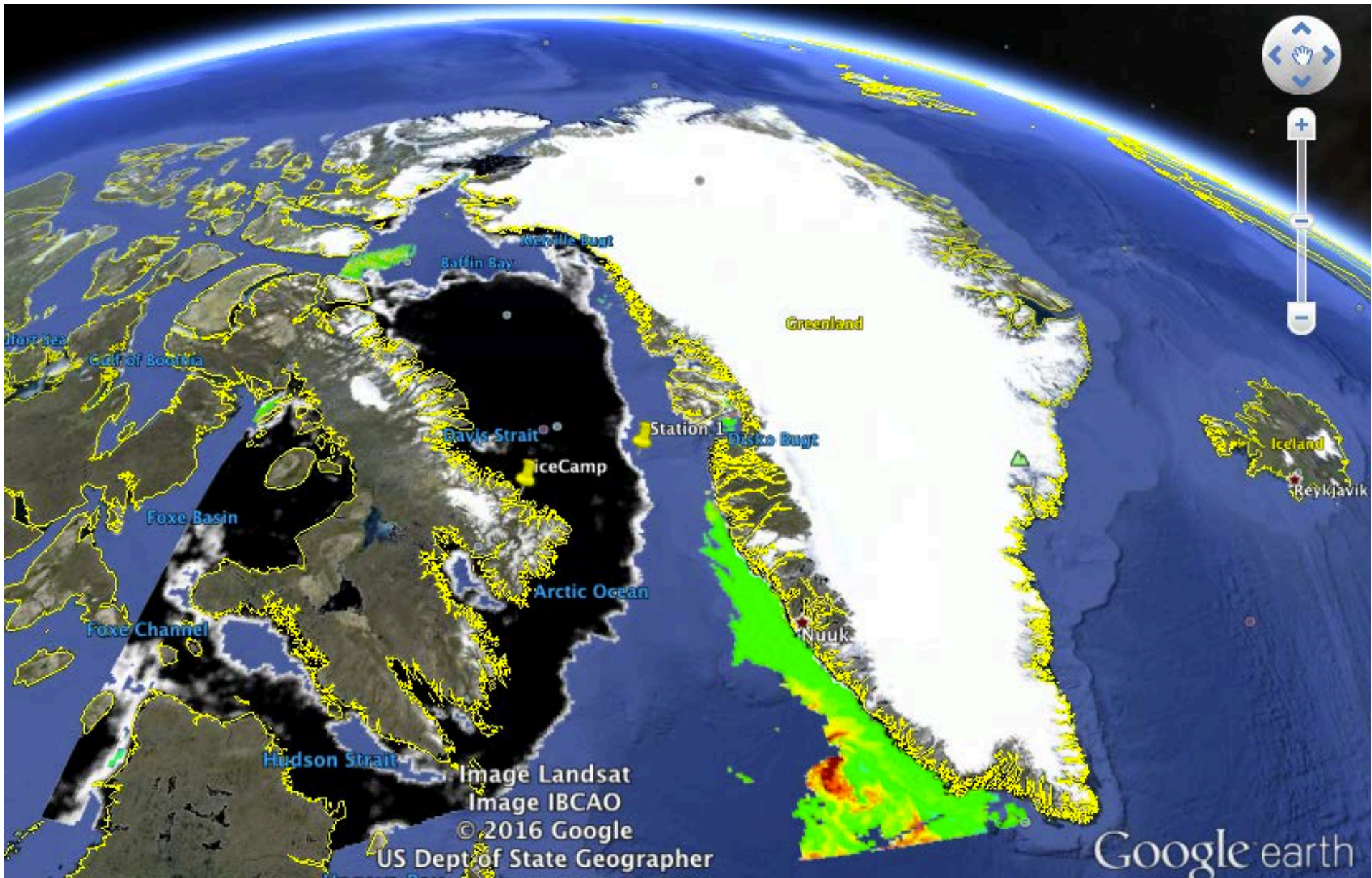
Green Edge Amundsen

Comments

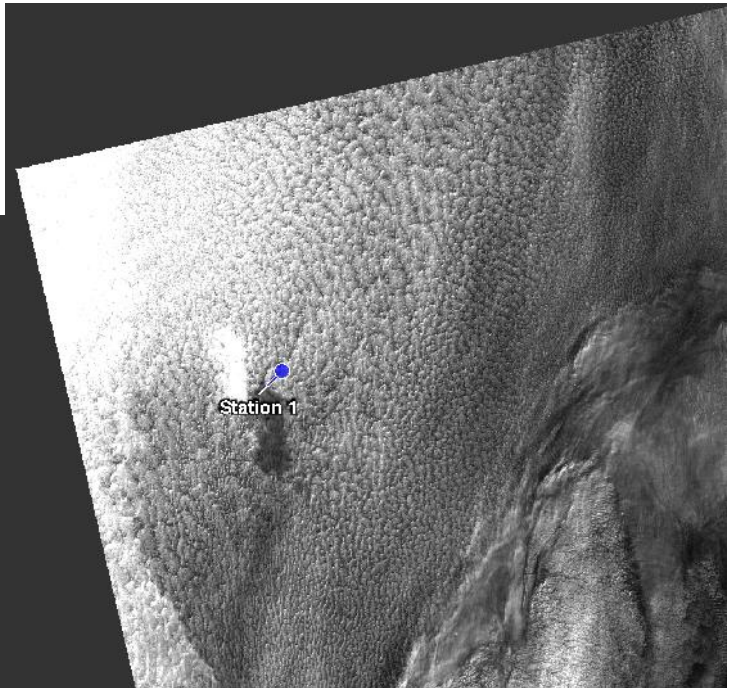
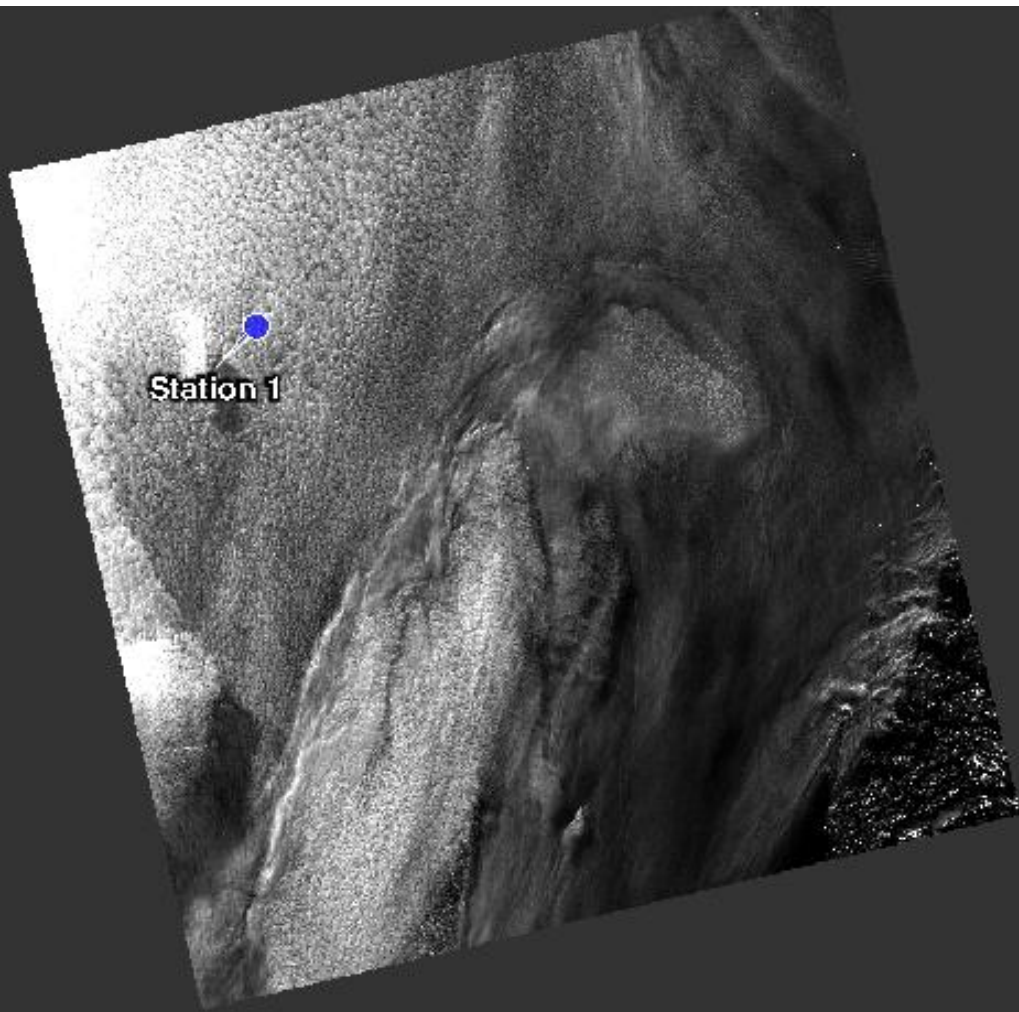
- There is a Landsat image of the region around the position of the Amundsen. It is a cloudy image.

June 8th

AMSR2 sea-ice concentration and MODIS chlorophyll-a concentration

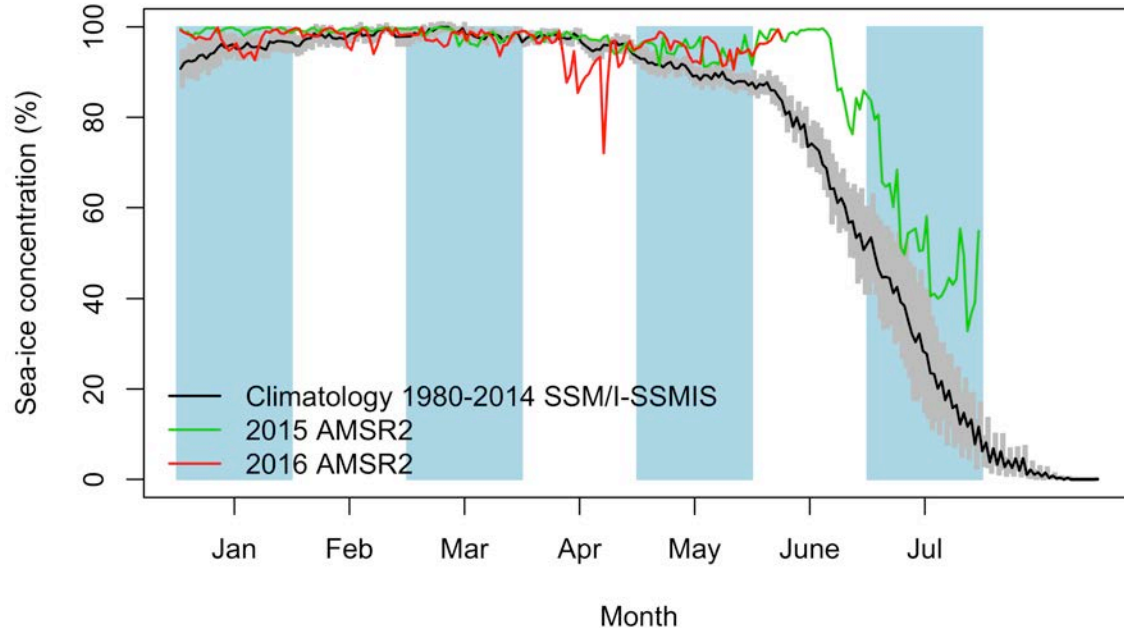


June 8th (Landsat)

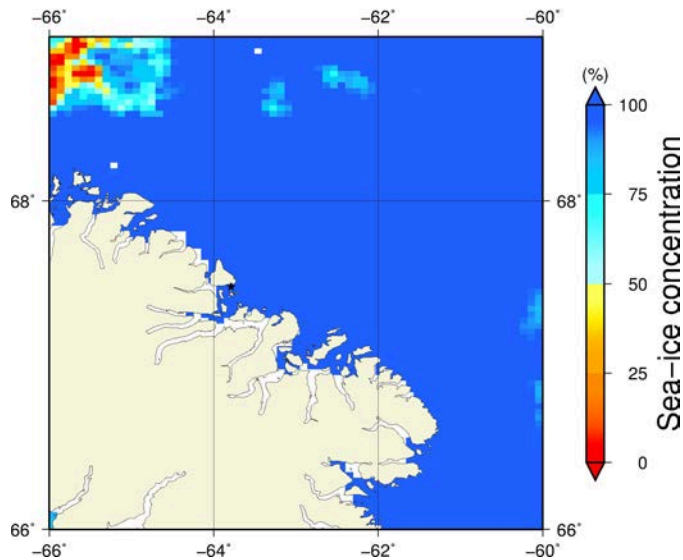


Green Edge Ice Camp

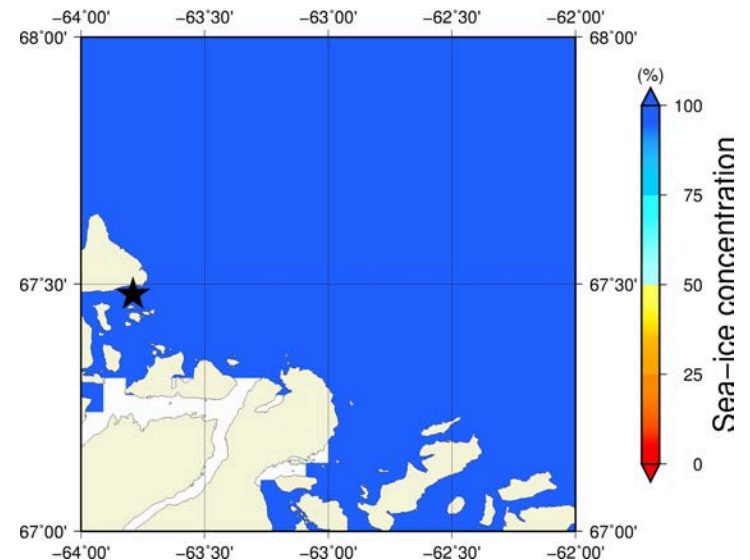
June 8th (AMSR2) Sea-ice concentration in the region 66° to 69°N and -66° to -60°E



Overview



Zoom



June 8th (MODIS)



Sea-ice concentration

CIS Ice charts

Stage of development

