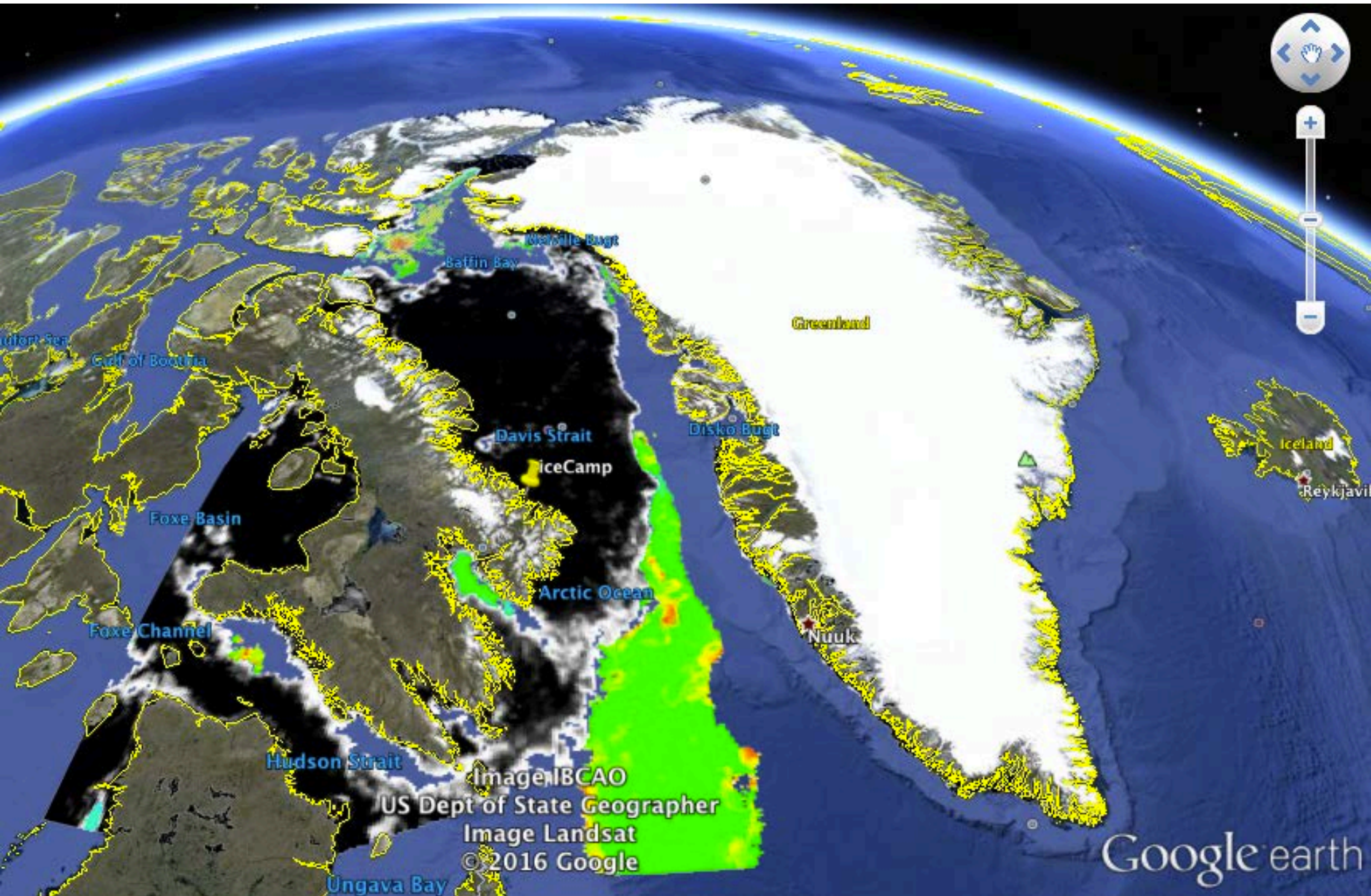


Green Edge Amundsen

# Comments

- Chlorophyll-a concentration data for Baffin Bay was added to sea ice concentration data on my Dropbox. Chlorophyll-a concentration is from MODIS-Aqua and has a resolution of 4.6 km. Chlorophyll-a concentration and sea ice concentration data will be distributed daily in format kml/png. See <https://goo.gl/SwM77o>.
- At this hour, sea ice concentration data is available for June 4<sup>th</sup> but not chlorophyll-a concentration. The last chlorophyll-a concentration available is for June 3<sup>rd</sup>. The last available data for each product will be distributed from my Dropbox and will be used for the Google Earth Pro screen capture.

# AMSR2 Ice (June 4<sup>th</sup>) and chlorophyll-a concentration (June 3<sup>rd</sup>)

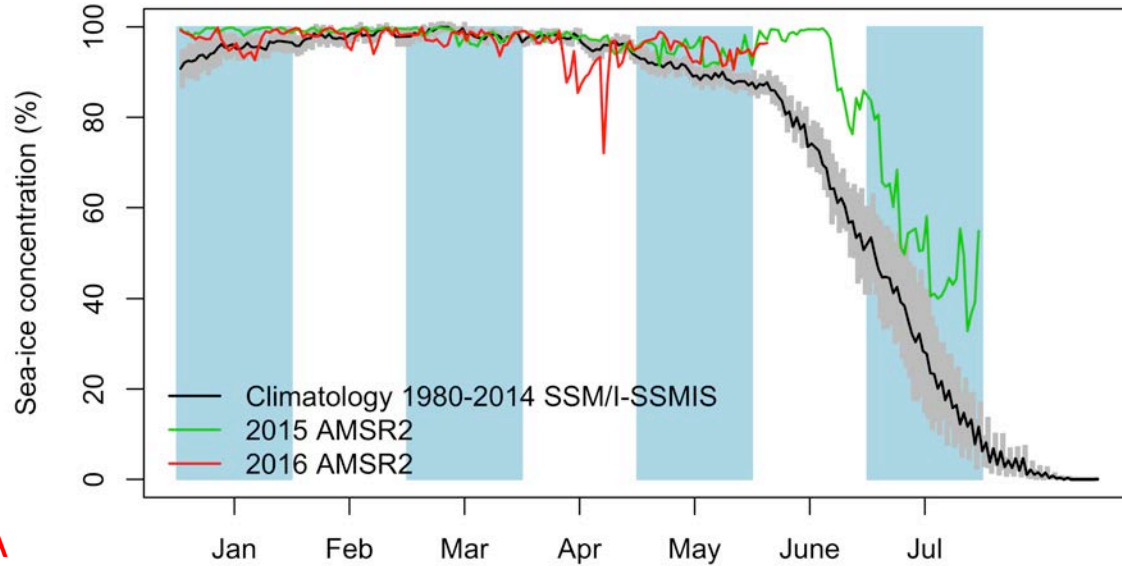


# Green Edge Ice Camp

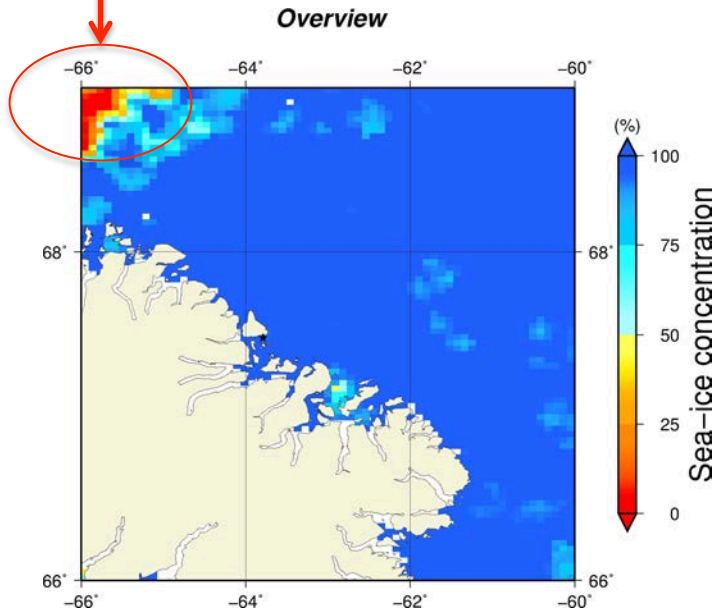
# Comments

- We observe since May 26<sup>th</sup> an open water area (Feature A) in Home Bay north of Broughton Island. It is particularly visible in the upper left corner of the overview AMSR2 images. On the low-resolution RADARSAT-2 image of today's report, we see in details this open water area with a disintegrating marginal ice zone. It confirms that there is an open water area at this place.

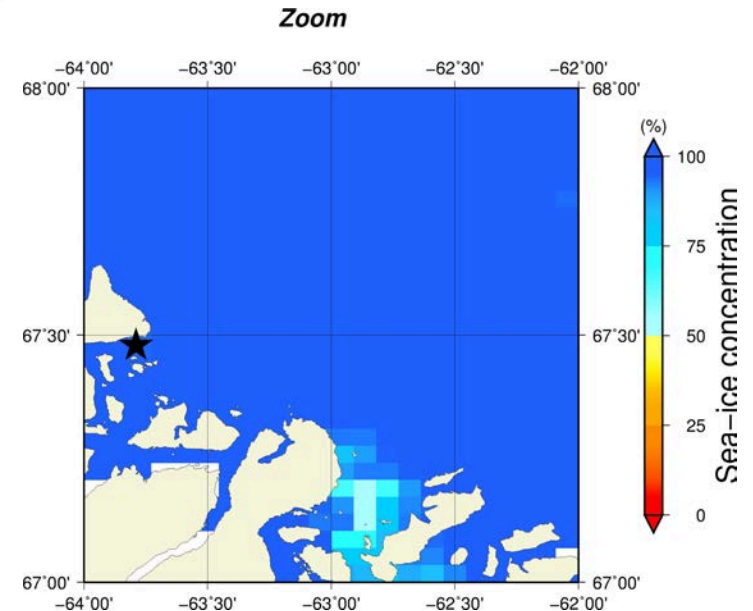
# June 4<sup>th</sup> (AMSR2) Sea-ice concentration in the region 66° to 69°N and -66° to -60°E



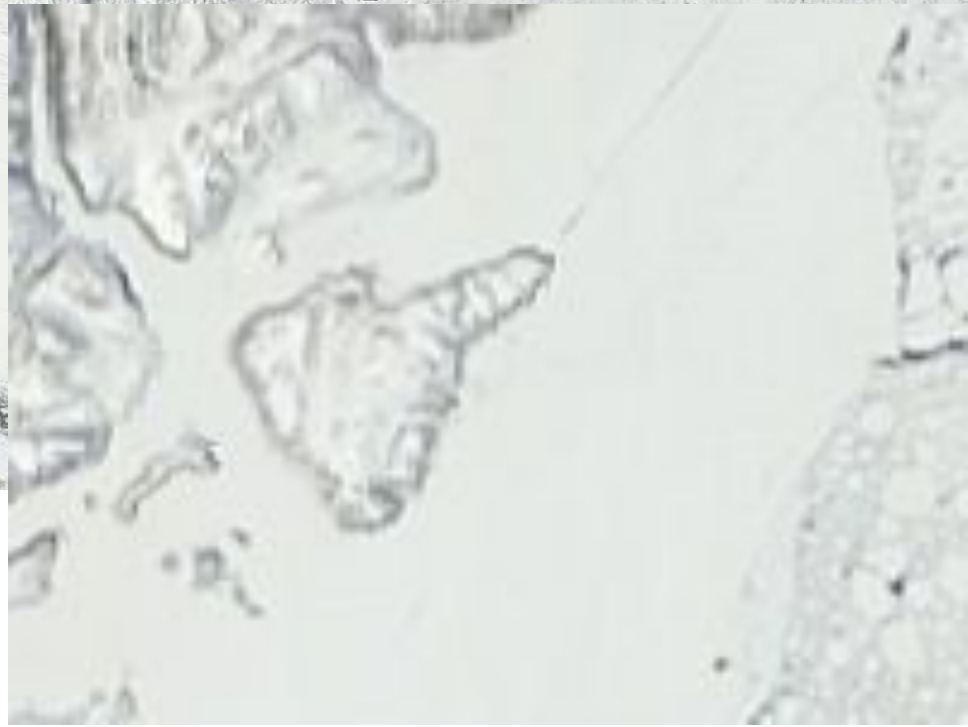
Feature A

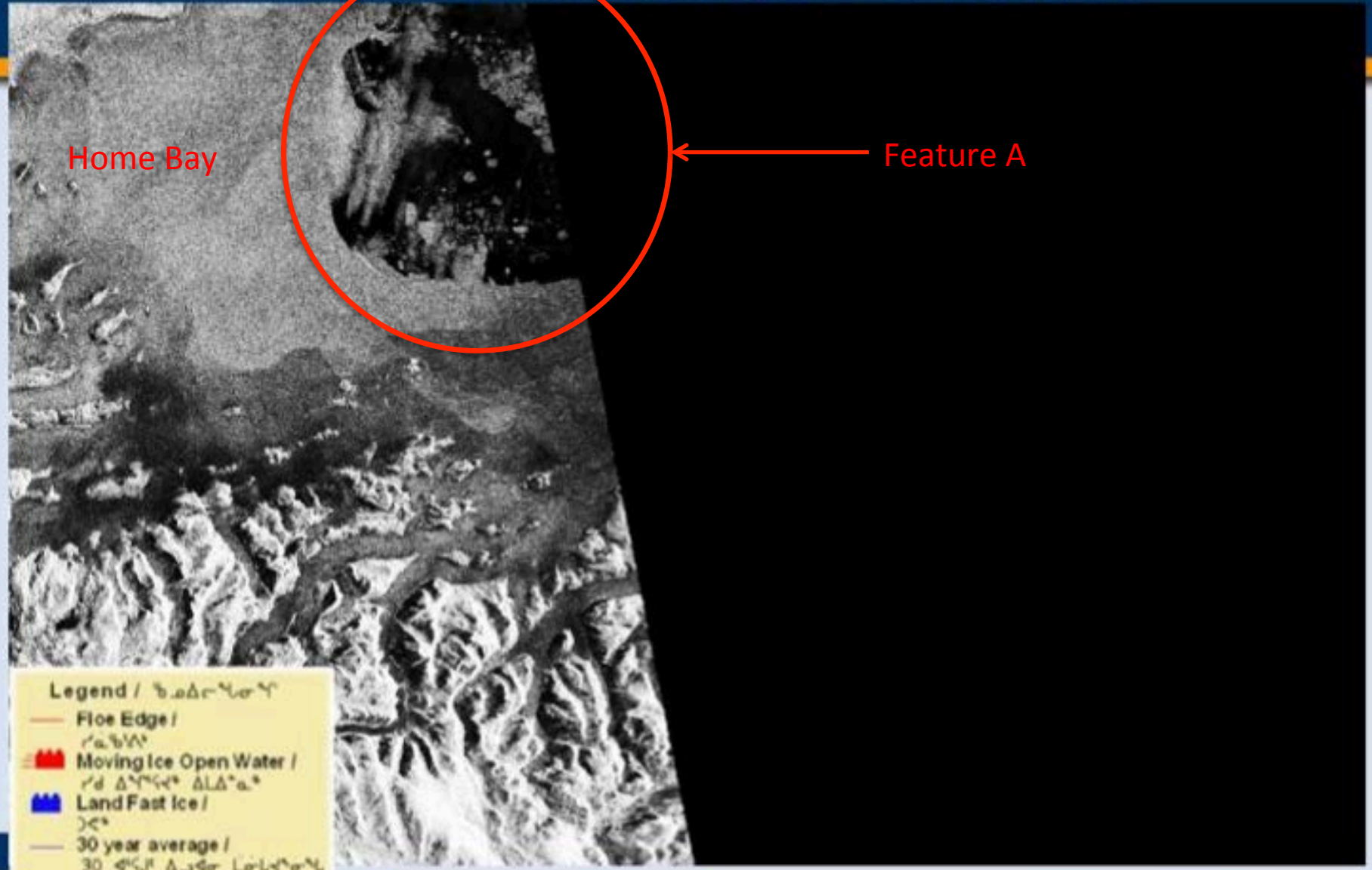


Month



June 4<sup>th</sup> (MODIS)





Home Bay

Feature A

**Legend / ᐅᓄᓕᓕᓕᓕ**

- Floe Edge / ᓕᓕᓕᓕ
- 🏰 Moving Ice Open Water / ᓕᓕ ᓕᓕᓕᓕ ᓕᓕᓕᓕ
- 🏰 Land Fast Ice / ᓕᓕ
- 30 year average / 30 ᓕᓕᓕᓕ ᓕᓕᓕᓕ ᓕᓕᓕᓕ