

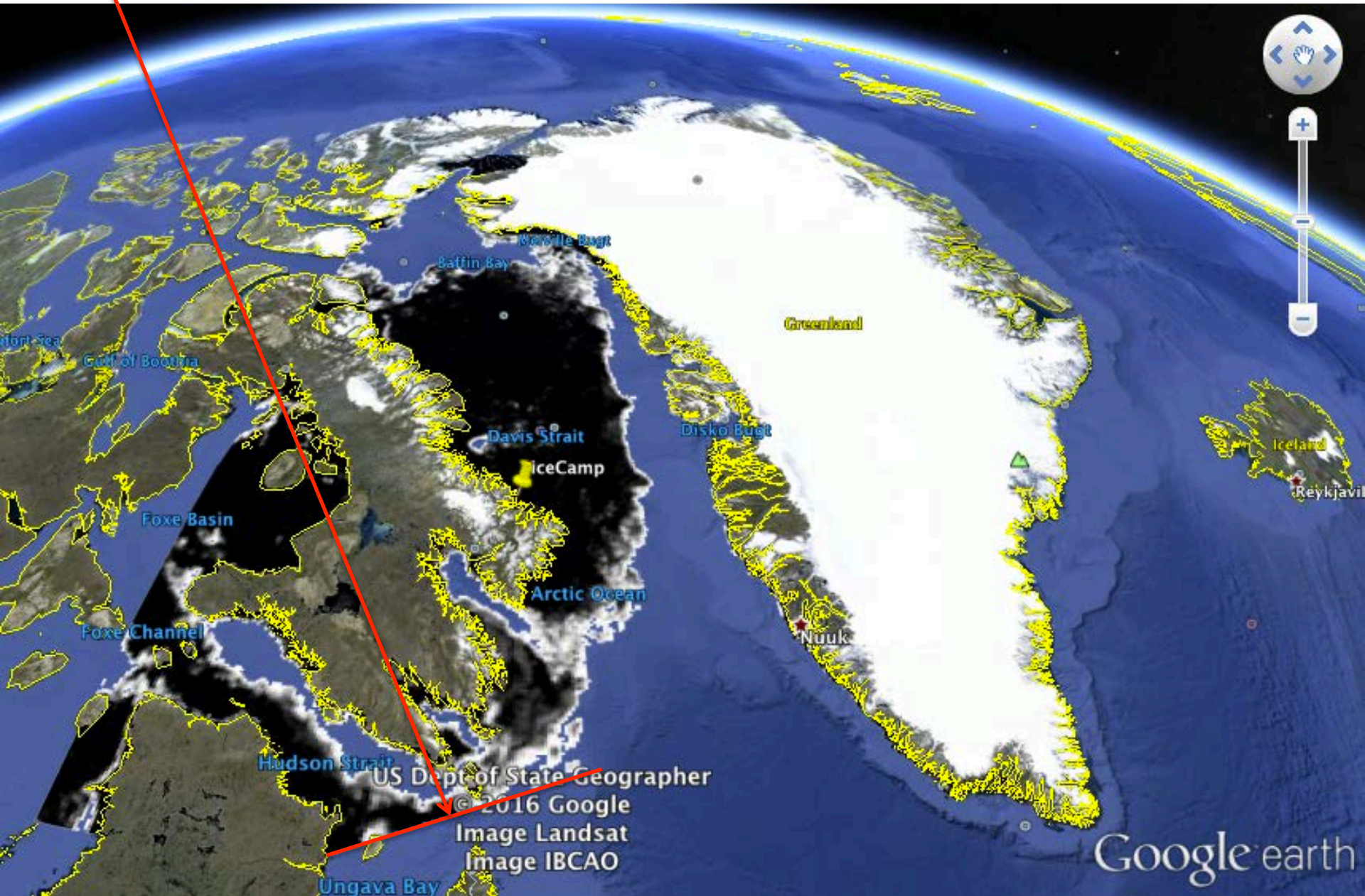
Green Edge Amundsen

Comments

- Images for the Amundsen mission will be added to the daily report of the satellite images for Green Edge. The first part of the report will be satellite images for the Amundsen mission and the second part will be satellite images for the ice camp. New types of satellite images for the Amundsen mission will be added in the next days. Please send me your comments.
- **Green Edge Amundsen**
- An AMSR2 image of the sea ice concentration in Baffin Bay will be added daily to the satellite images report of Green Edge 2016.
- Note that the AMSR2 image used doesn't contain data south of the Feature A (see the image). It doesn't mean there is no ice south of Feature A. It is because we use images from http://www.iup.uni-bremen.de:8084/amsr2data/asi_daygrid_swath/n3125/2016/jun/NorthWestPassage for which the region of interest doesn't contain Labrador Sea. The advantages of these AMSR2 images is that they contain data of the last 24 hours and they have spatial resolution of 3.125 km. Unfortunately, the other regions of interest in http://www.iup.uni-bremen.de:8084/amsr2data/asi_daygrid_swath/n3125/2016/jun/ don't contain Labrador Sea neither.
- We plan making available the daily AMSR2 images of the sea ice concentration in Baffin Bay in the format kml/png on <http://www.greenedgeproject.info/data.php>. By then, they will be available on my Dropbox:
- <https://goo.gl/SwM77o>
- Images in the format kml/png can be opened in Google Earth. Open the kml file.

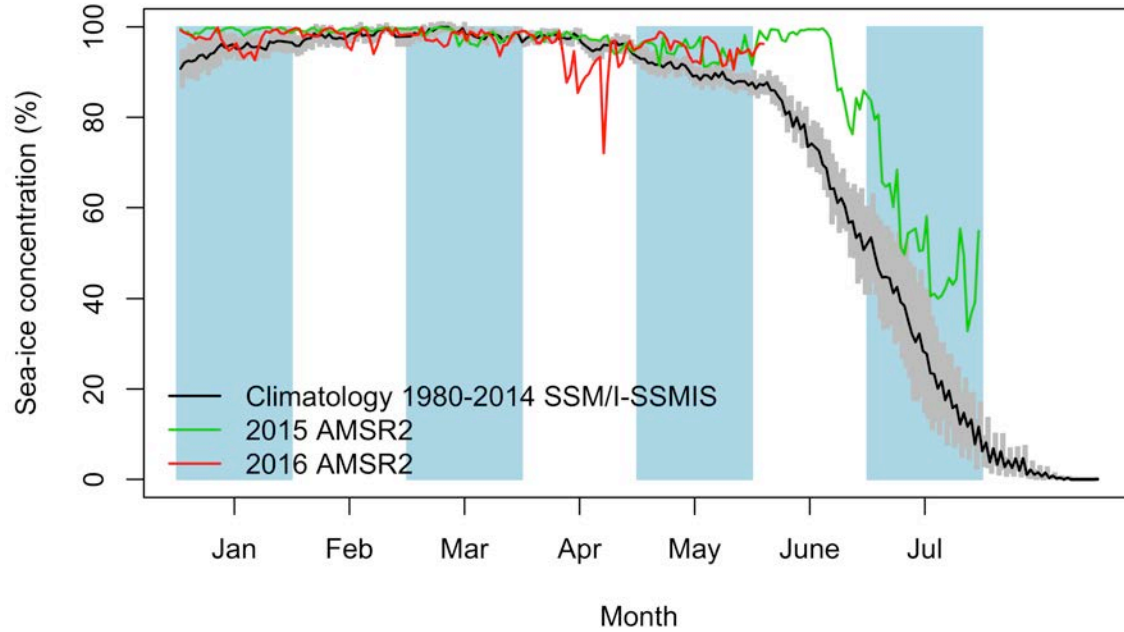
June 3rd
AMSR2 Ice

Feature A

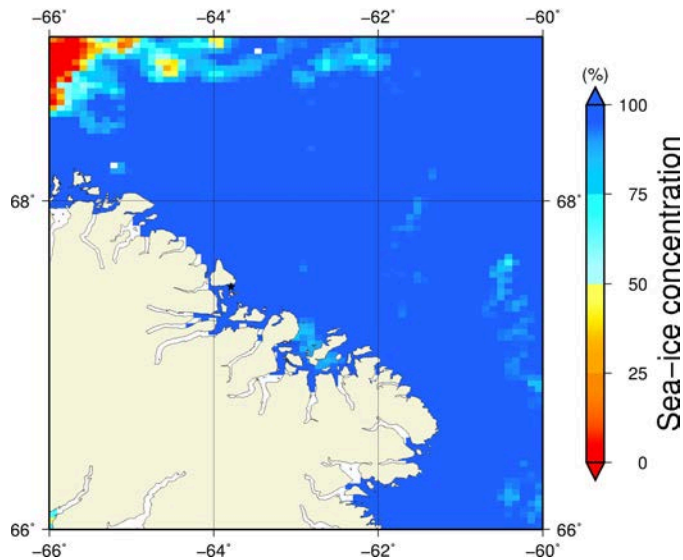


Green Edge Ice Camp

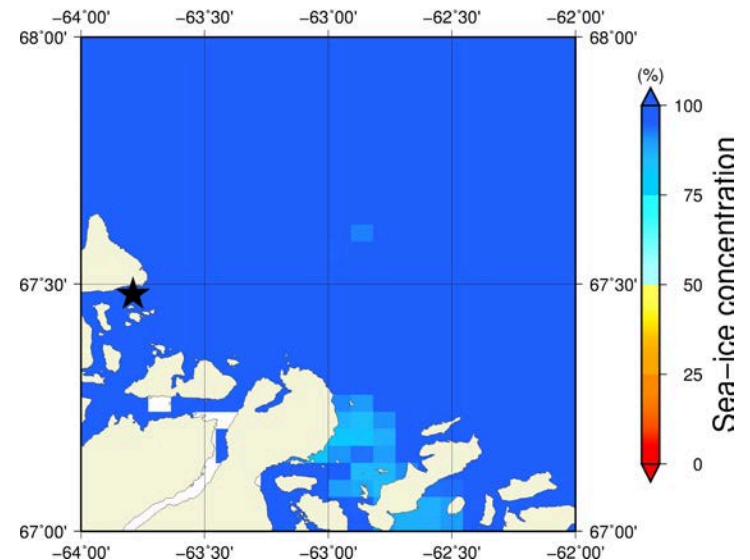
June 3rd (AMSR2) Sea-ice concentration in the region 66° to 69°N and -66° to -60°E



Overview



Zoom



June 3rd (MODIS)

