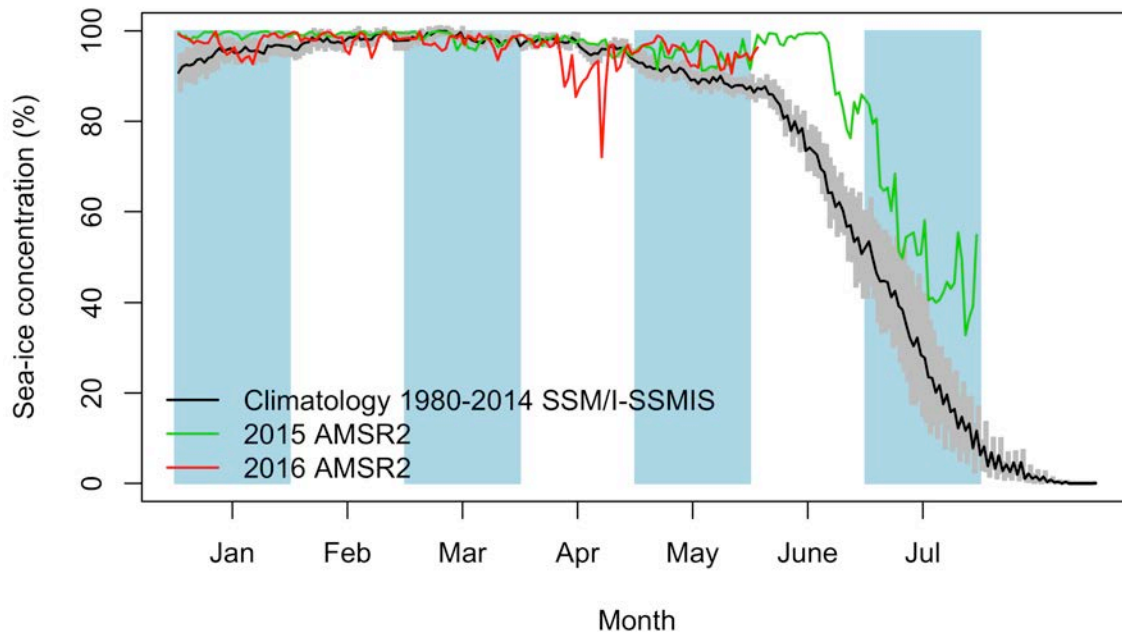


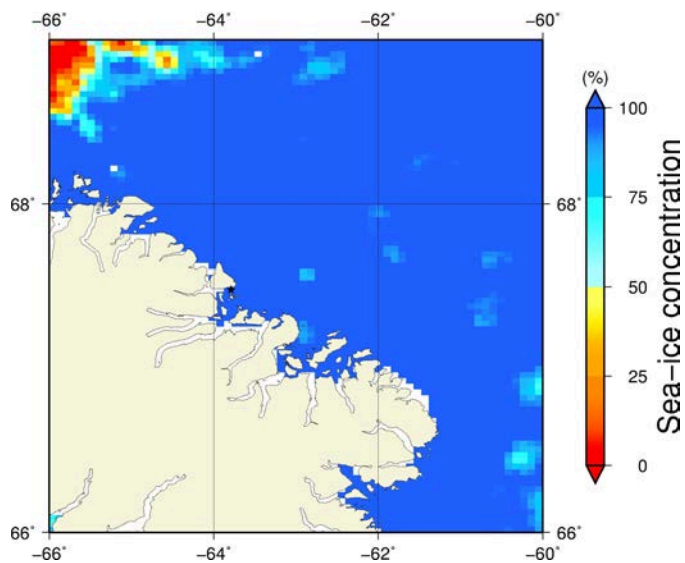
Comments

- On the Sentinel-1 synoptic image, we see that the distance between the ice camp and the marginal ice zone northwest of Broughton Island is stable since June 1st. It was 154.0 km on June 1st and 153.5 km on June 2nd.

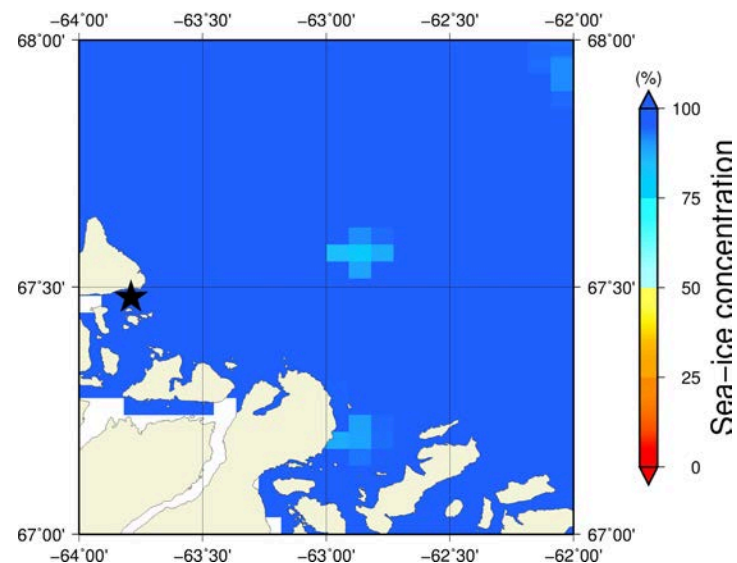
June 2nd (AMSR2) Sea-ice concentration in the region 66° to 69°N and -66° to -60°E



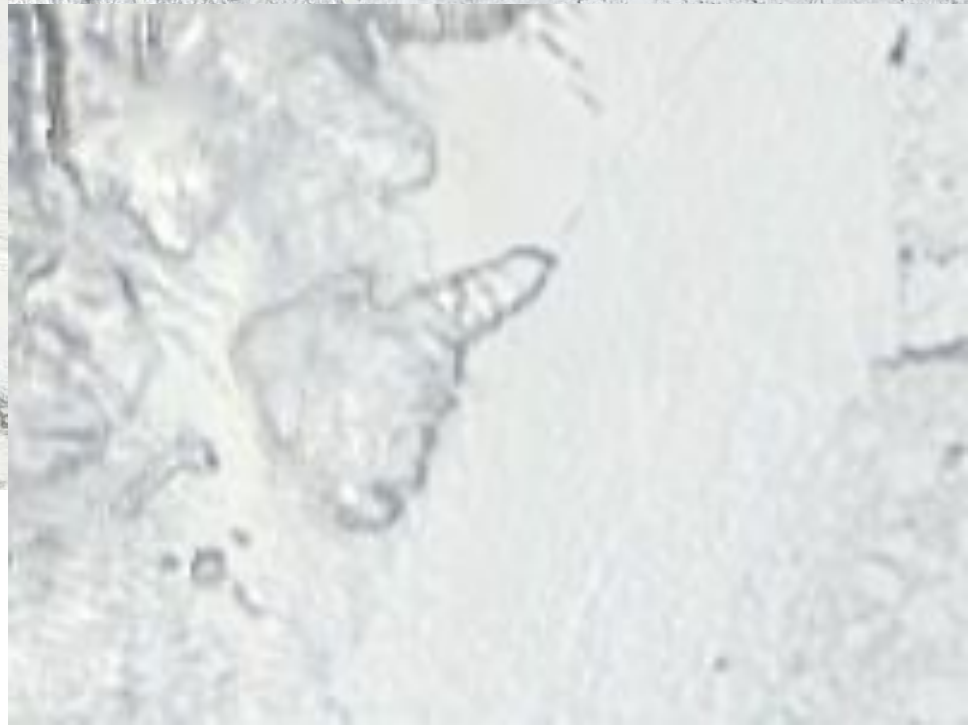
Overview



Zoom



June 2nd (MODIS)



June 2nd (Sentinel-1)

