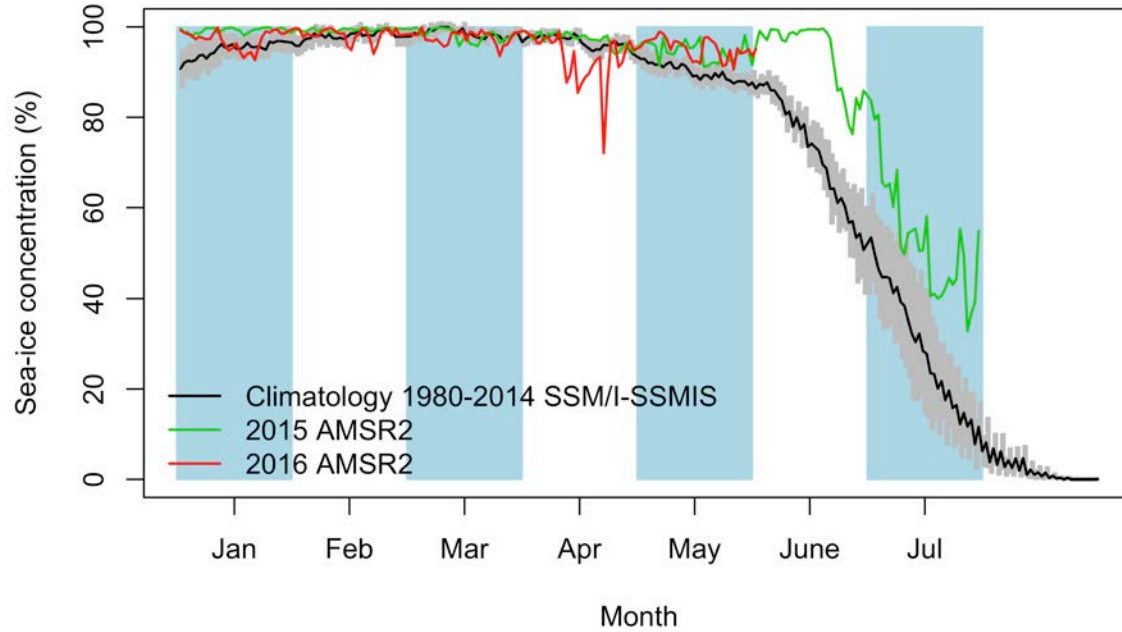


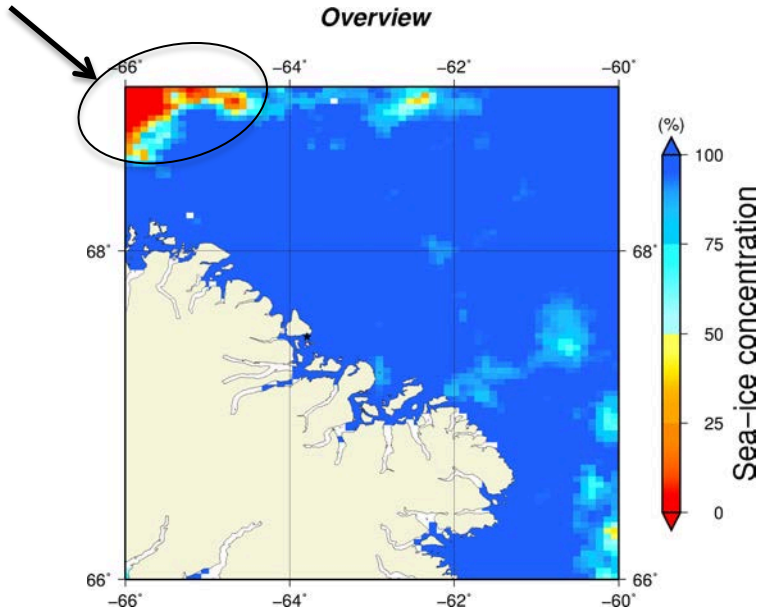
Comments

- Since May 26th, we observe an open water area northwest of Broughton Island on the AMSR2 overview images (Feature A). Feature A can be observed on the MODIS synoptic image, the Sentinel-1 synoptic image and the Canadian Ice Service (CIS) charts of today too. On the CIS sea-ice concentration chart, we observe that Feature A is at the land-fast ice edge. The distance between the ice camp and Feature A is 154.0 km.

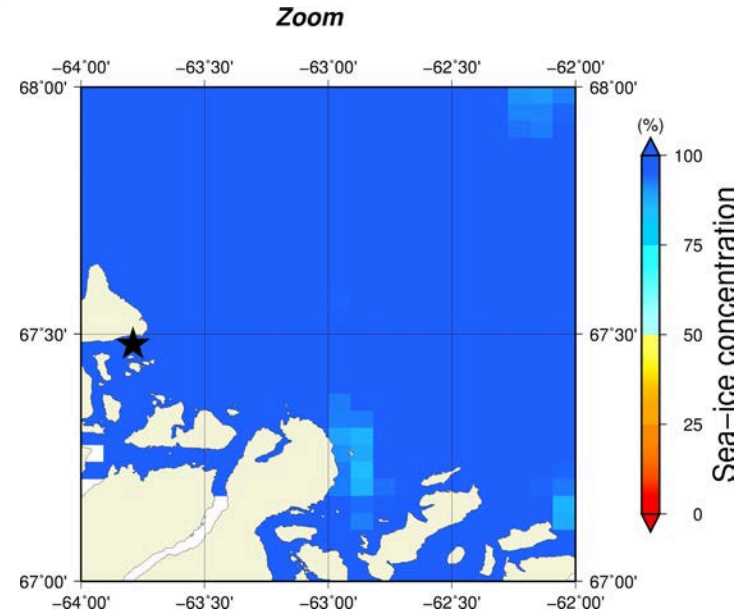
June 1st (AMSR2) Sea-ice concentration in the region 66° to 69°N and -66° to -60°E



Feature A

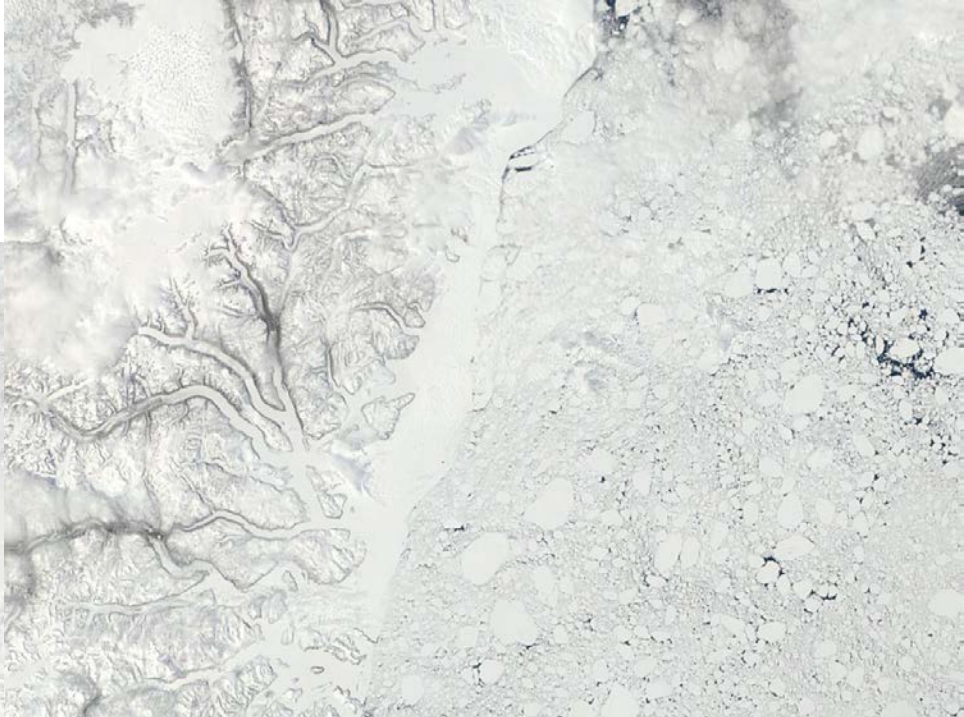
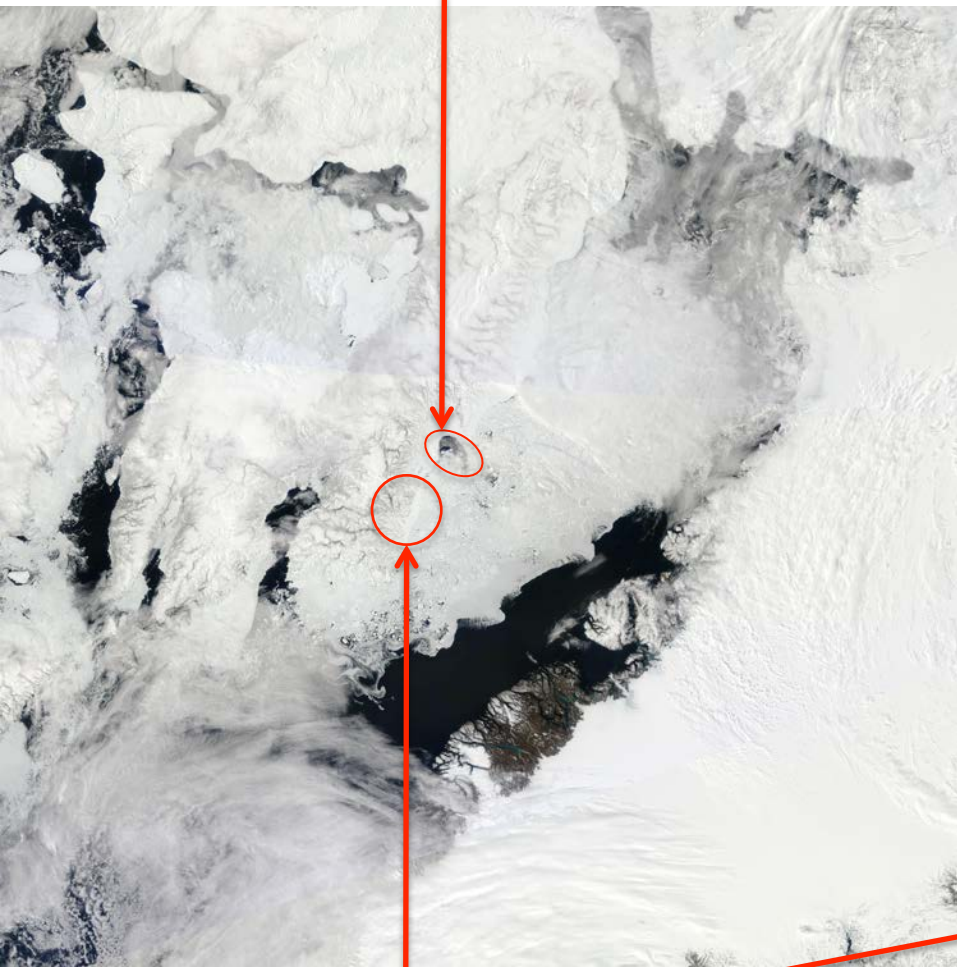


Month



June 1st (MODIS)

Feature A

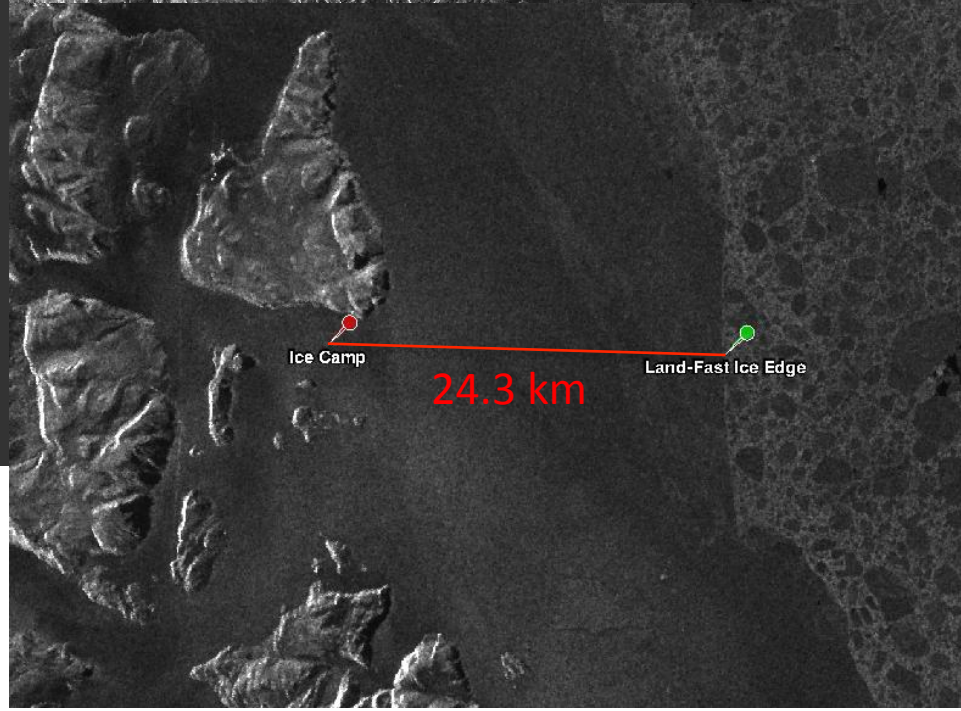
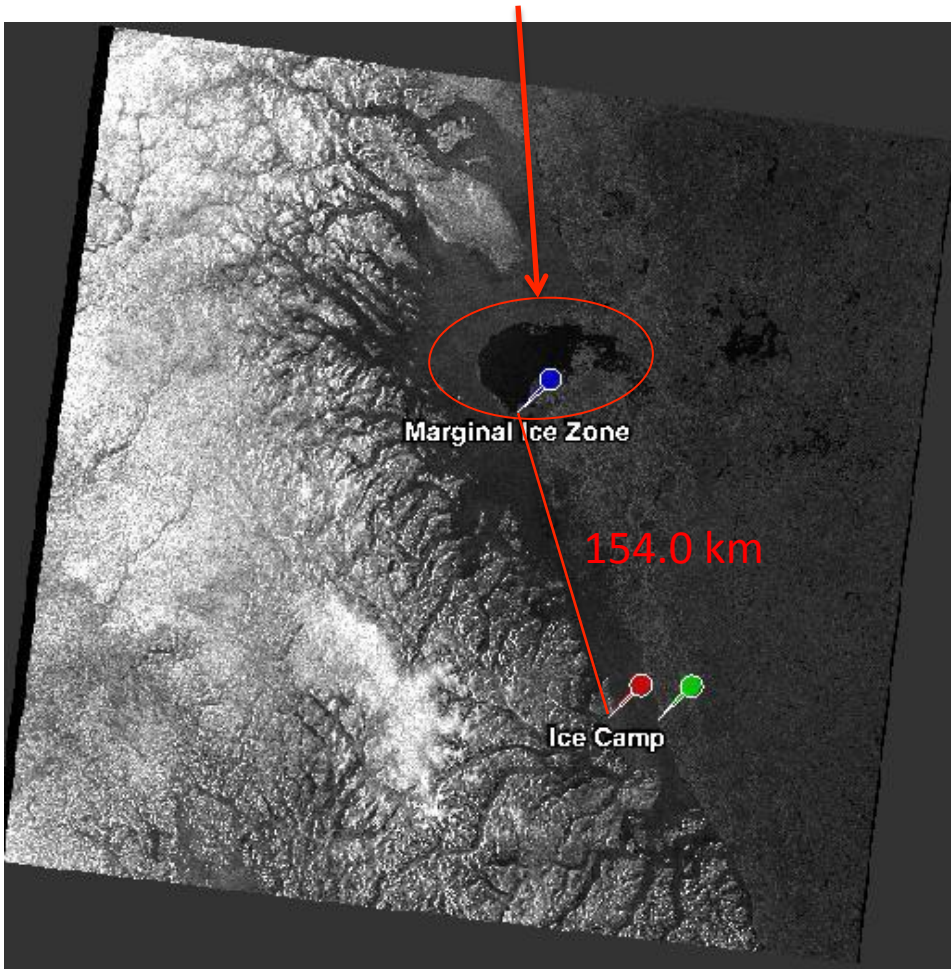


Broughton Island



June 1st (Sentinel-1)

Feature A



Feature A

Sea-ice concentration

CIS Ice charts

Stage of development

