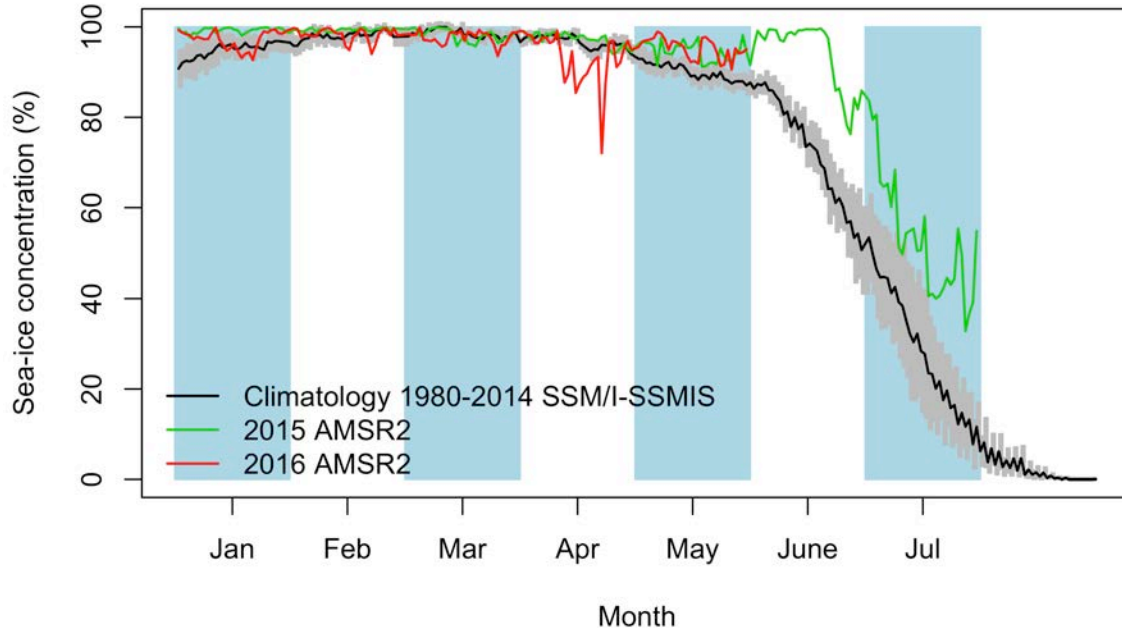


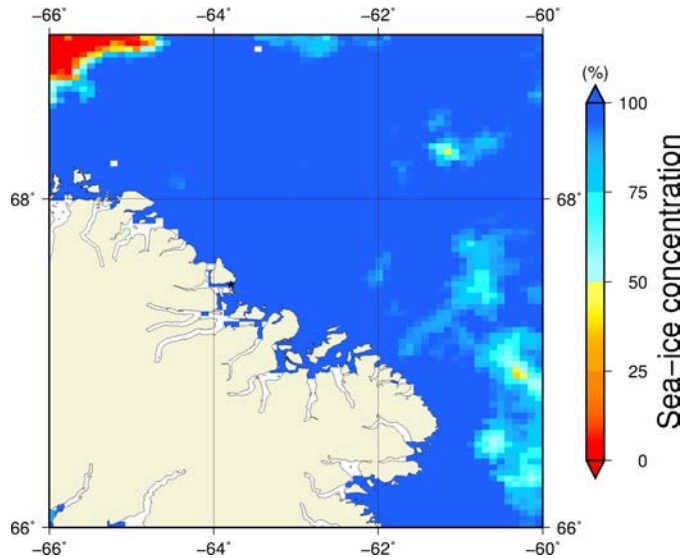
# Comments

- We observe a continual decline in the distance between the ice camp and the marginal ice zone on the Sentinel-1 images. It decreased from 294.0 km (May 5<sup>th</sup>) to 287.3 km (May 10<sup>th</sup>) to 248.4km (May 17<sup>th</sup>) to 245.1 km (May 18<sup>th</sup>) to 252.3 km (May 22<sup>nd</sup>) to 233.4 km (May 29<sup>th</sup>) to 237.0 km (May 30<sup>th</sup>).

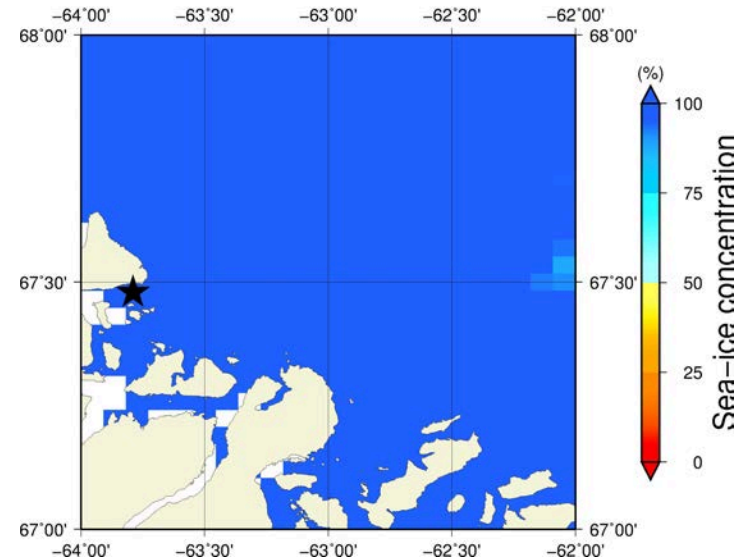
# May 30<sup>th</sup> (AMSR2) Sea - ice concentration in the region 66° to 69°N and -66° to -60°E



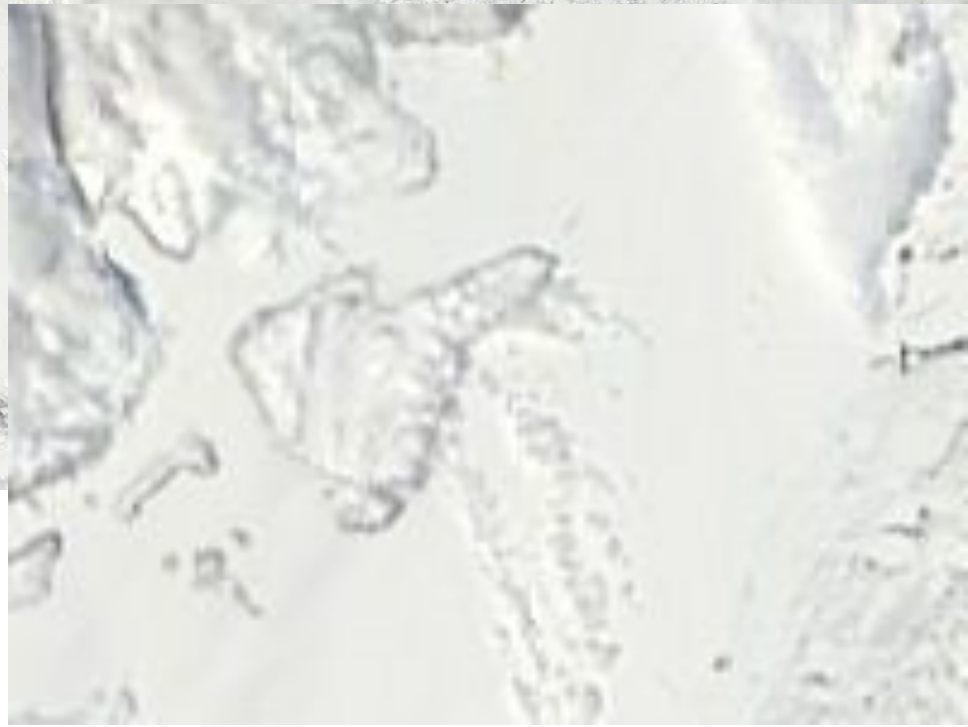
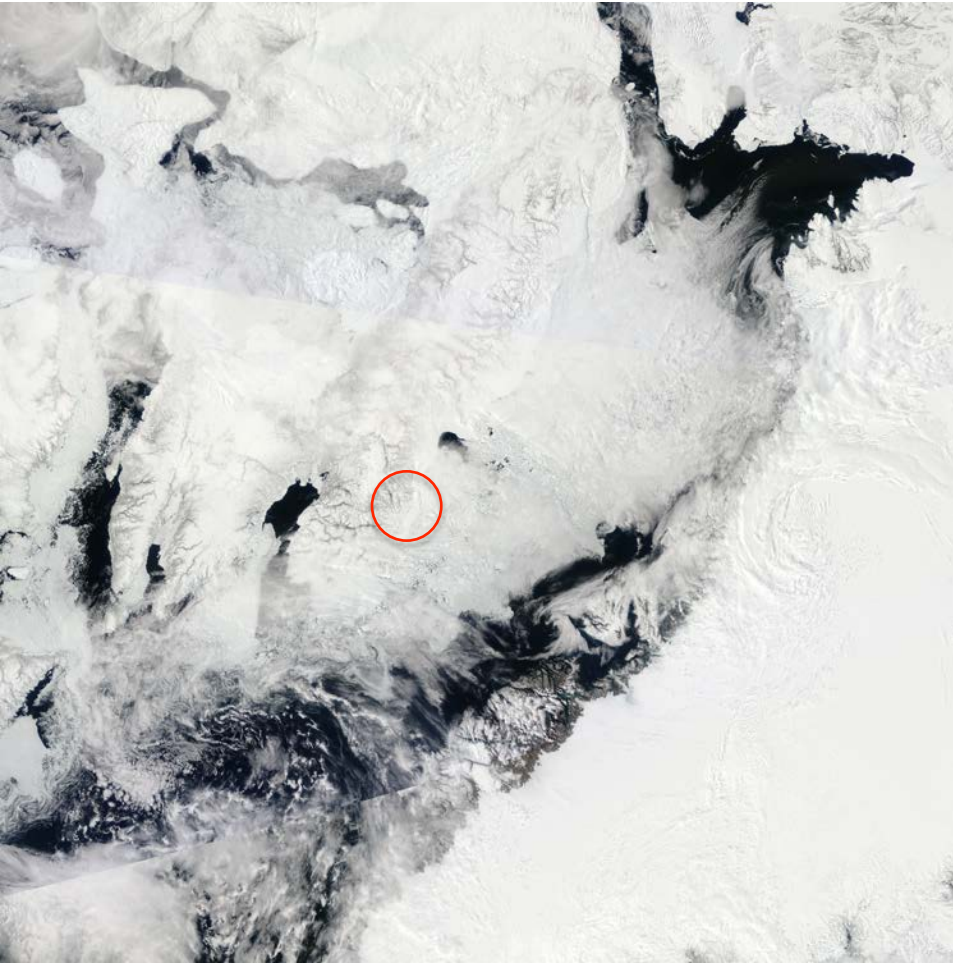
**Overview**



**Zoom**



May 30<sup>th</sup> (MODIS)





May 30<sup>th</sup> (Sentinel-1)

