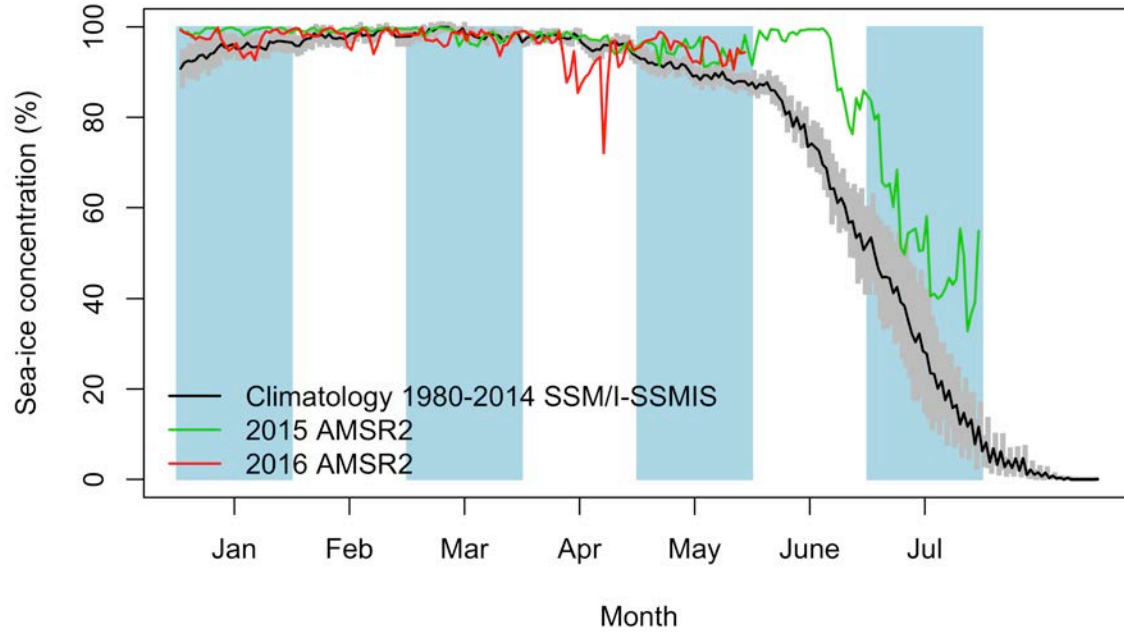


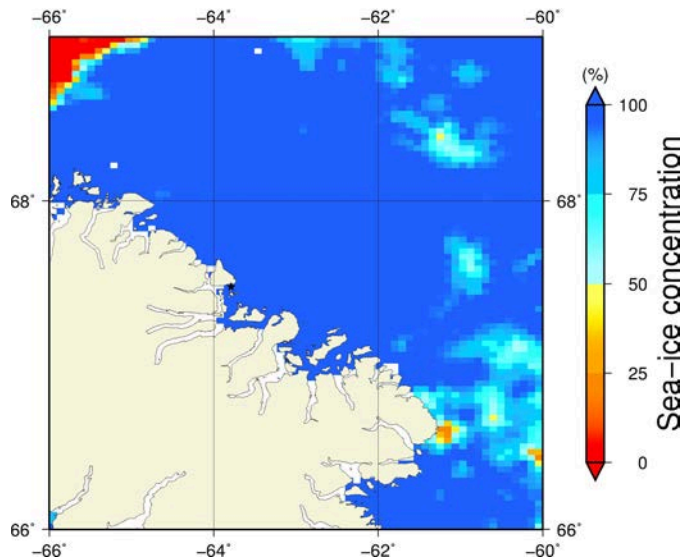
Comments

- There are many available images for yesterday May 29th. There are AMSR2, MODIS, Landsat, RADARSAT-2 low-resolution and Sentinel-1 images.
- Note that the MODIS and Landsat images are cloudy.
- The distance between the ice camp and the land-fast ice edge is 24.3 km on the Sentinel-1 image. It is almost stable since April 24th when it was 24.5 km.
- On the other hand, we observe a continual decline in the distance between the ice camp and the marginal ice zone on the Sentinel-1 images. It decreased from 294.0 km (May 5th) to 287.3 km (May 10th) to 248.4km (May 17th) to 245.1 km (May 18th) to 252.3 km (May 22nd) to 233.4 km (May 29th).

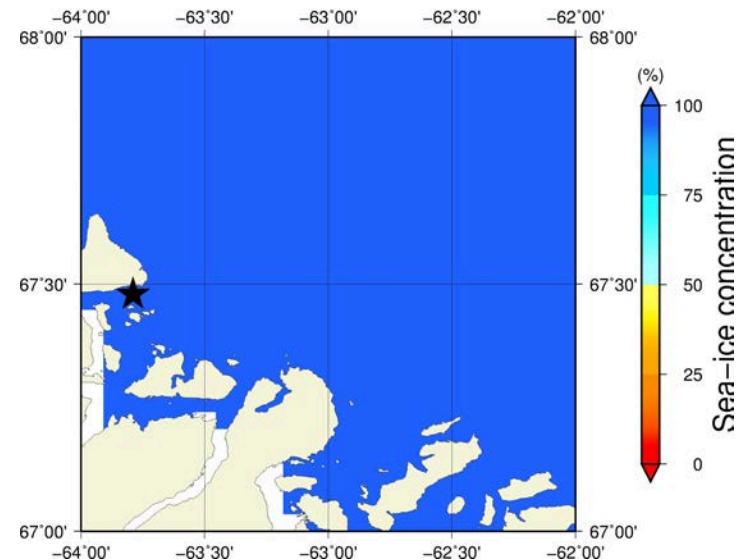
May 29th (AMSR2) Sea-ice concentration in the region 66° to 69°N and -66° to -60°E



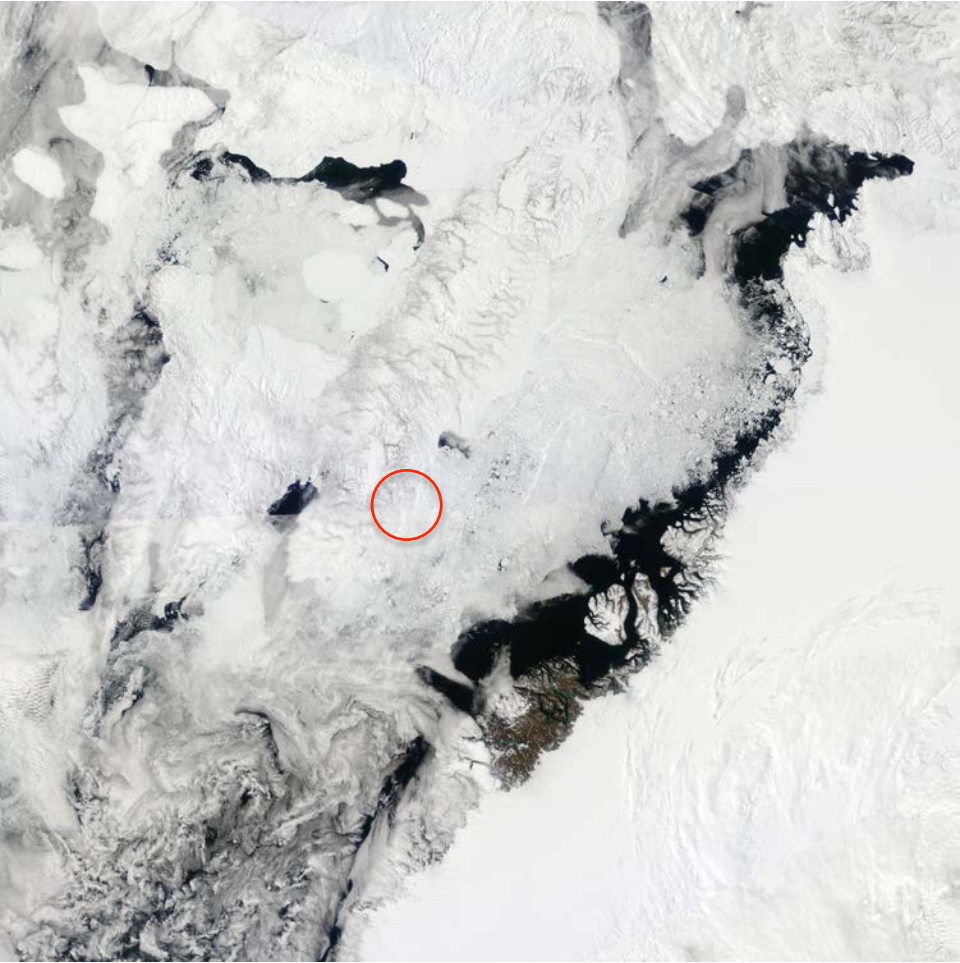
Overview



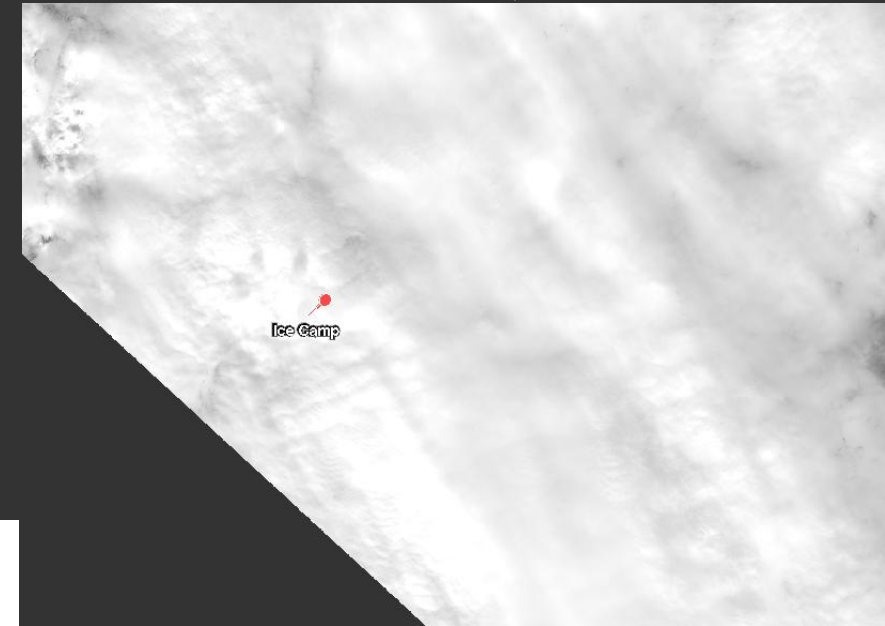
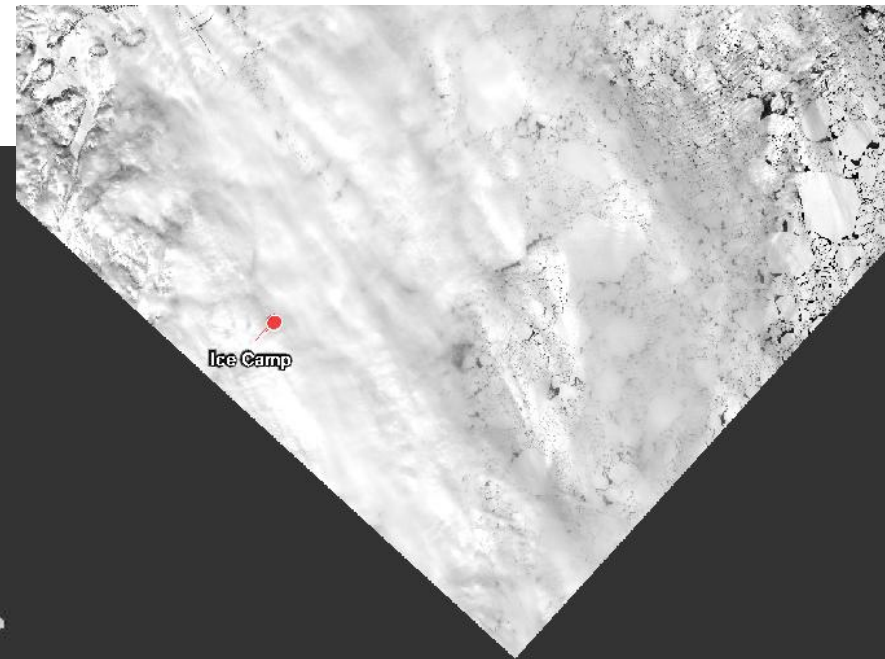
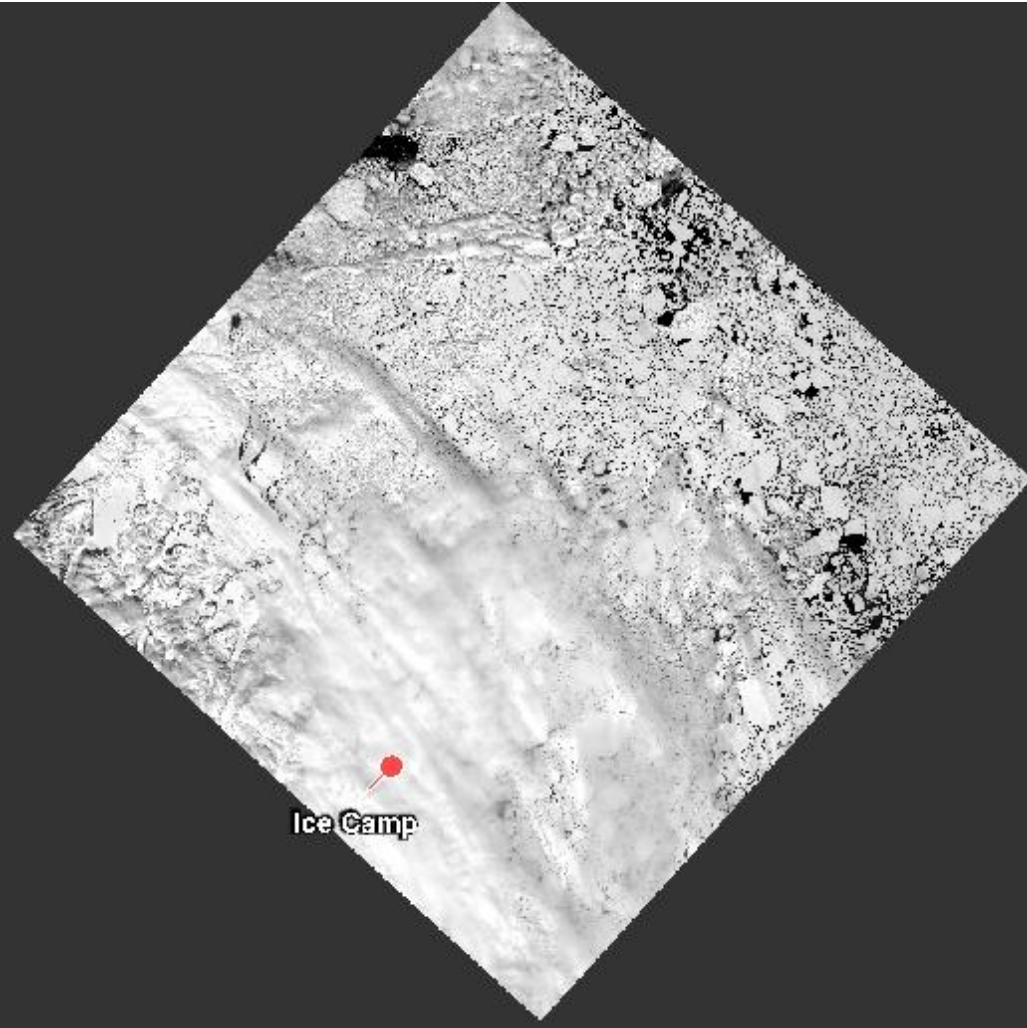
Zoom

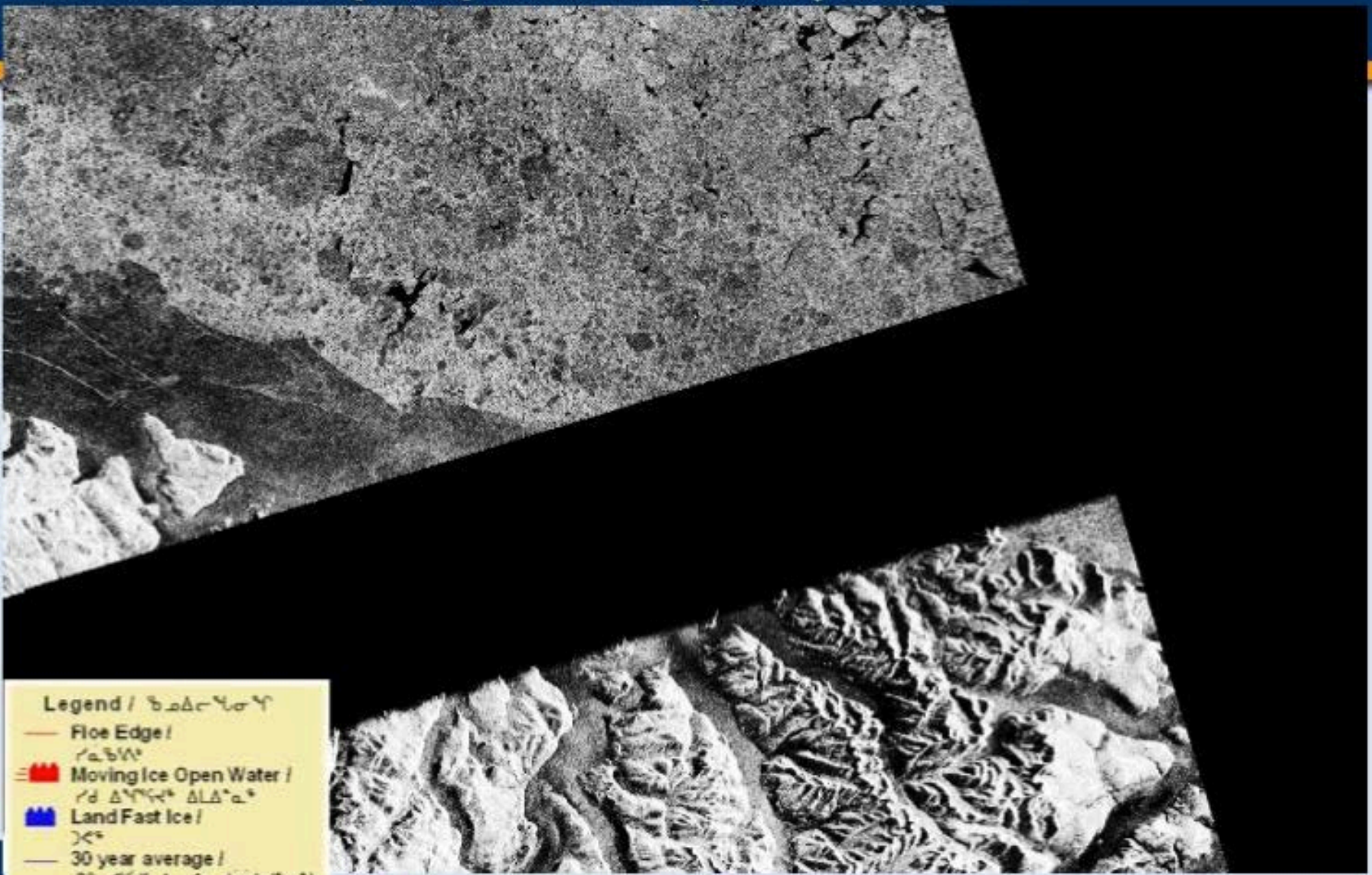


May 29th (MODIS)



May 29th (Landsat)





Legend / ᑲᓄᓕᑎᓂᑦᑦ

- Floe Edge / ᑎᓄᓂᑦᑦ
- 🚧 Moving Ice Open Water / ᑎᓄᓂᑦᑦ ᓄᓂᑎᓂᑦᑦ ᓄᓂᑎᓂᑦᑦ
- 🏔️ Land Fast Ice / ᓄᓂᑎᓂᑦᑦ
- 30 year average / 30 ᓄᓂᑎᓂᑦᑦ ᓄᓂᑎᓂᑦᑦ ᓄᓂᑎᓂᑦᑦ

May 29th (Sentinel-1)

