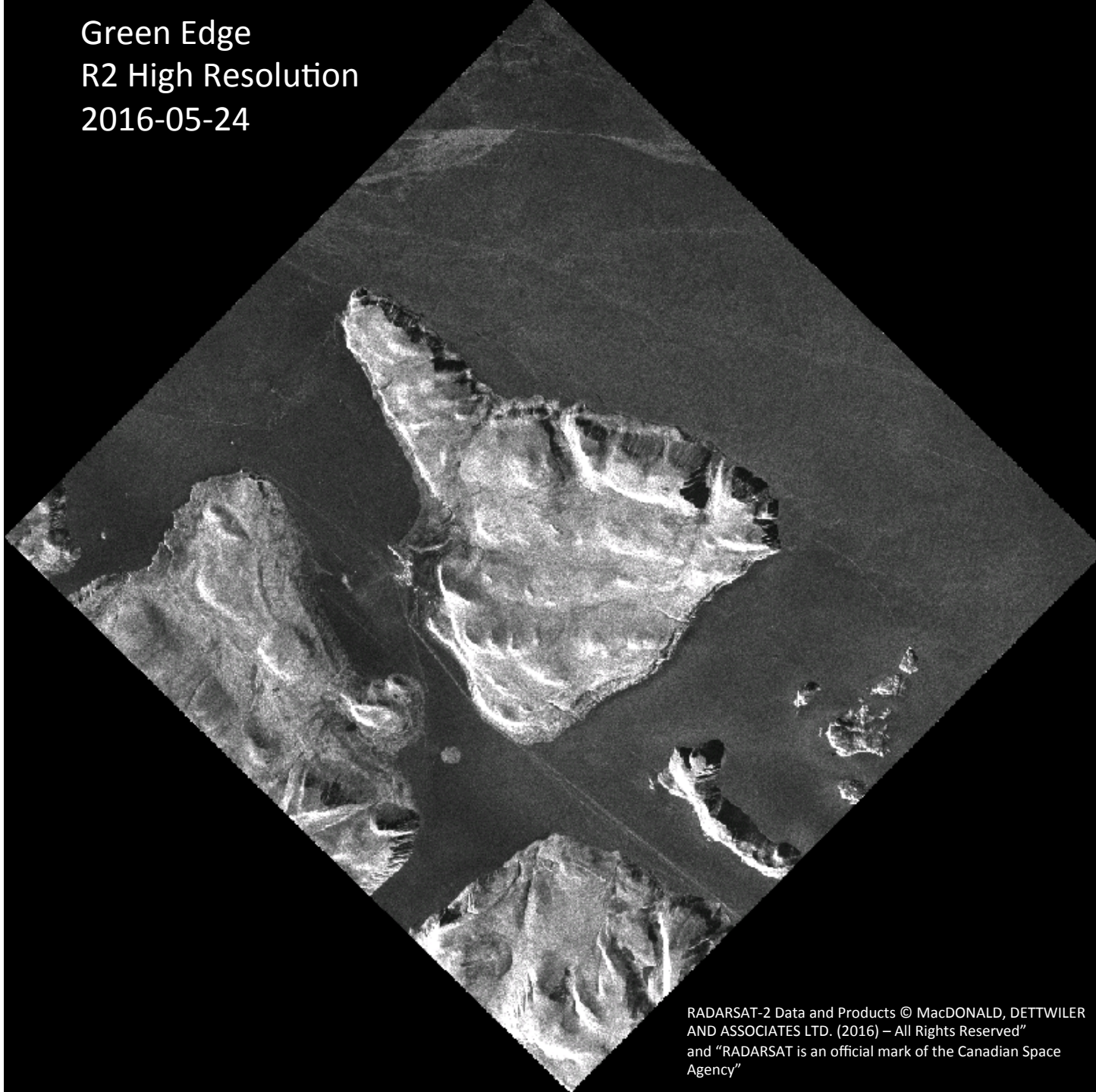


Comments

- There is a RADARSAT-2 high-resolution image from Marilee Pregitzer from the Canadian Ice Service.
- For an undetermined reason, Sentinel-1 images are unavailable from the Polar View website since May 23rd. Eric Rehm verified that they are unavailable from Google Earth Engine too since the same day of May 23rd.

Green Edge
R2 High Resolution
2016-05-24



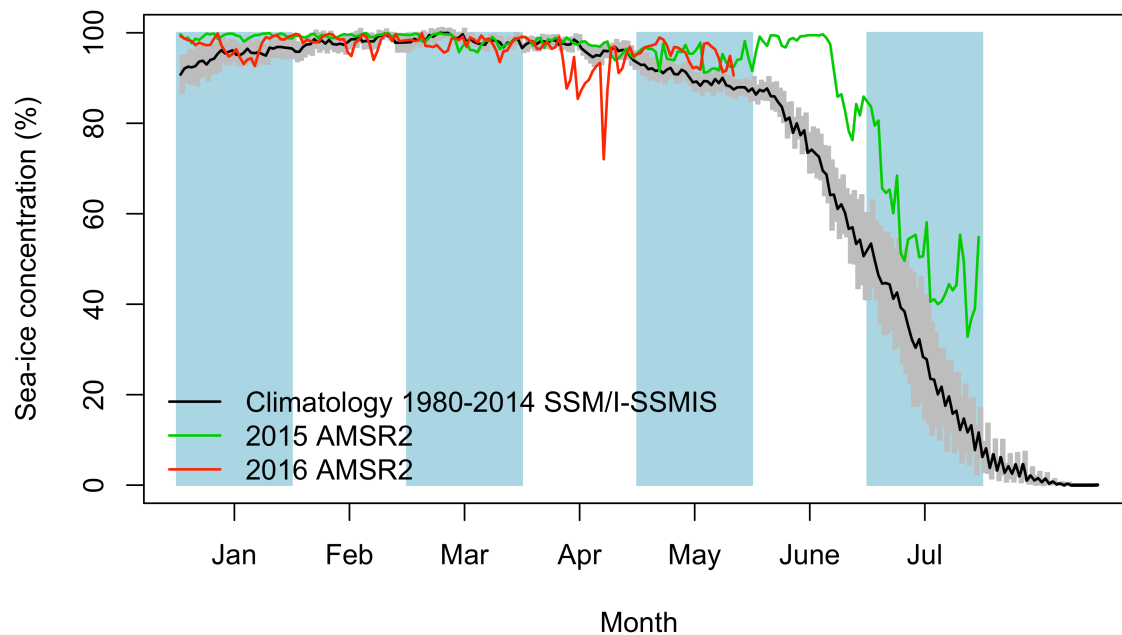
RADARSAT-2 Data and Products © MacDONALD, DETTWILER
AND ASSOCIATES LTD. (2016) – All Rights Reserved”
and “RADARSAT is an official mark of the Canadian Space
Agency”



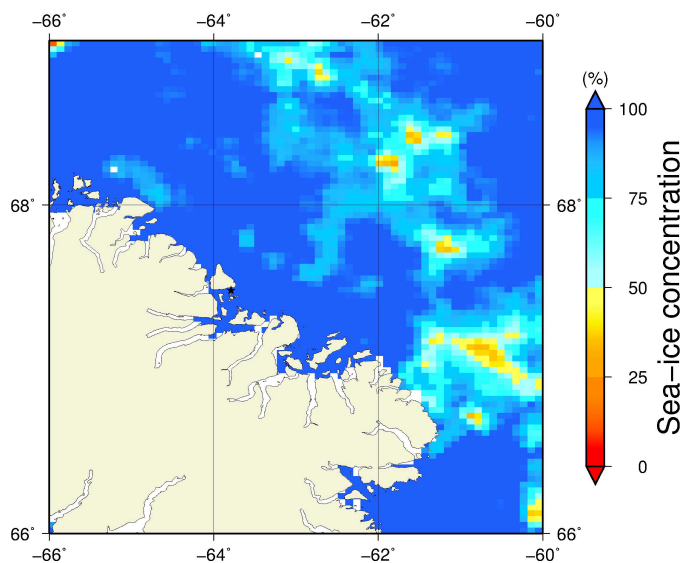
Green Edge
R2 High Resolution
2016-05-24

RADARSAT-2 Data and Products © MFC © NALD,
DETTWILER AND ASSOCIATES LTD. (2016) - All
Rights Reserved
and "RADARSAT is an official mark of the Canadian
Space Agency"

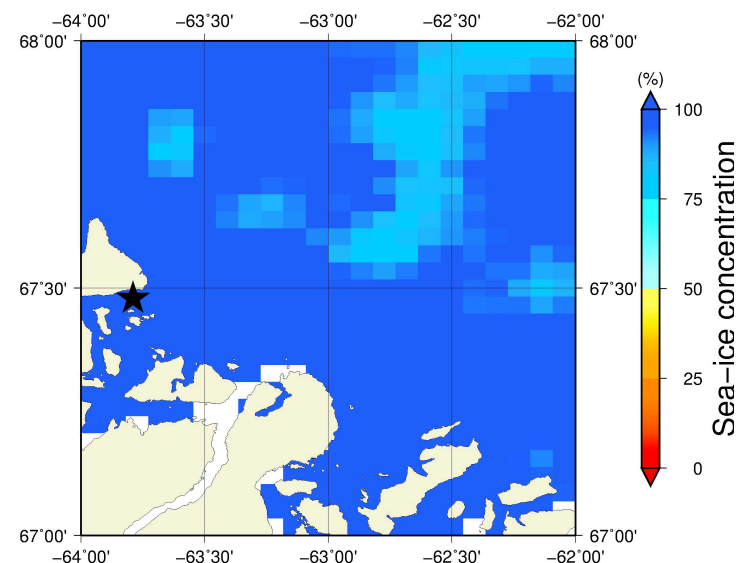
May 26th (AMSR2) Sea – ice concentration in the region 66° to 69°N and –66° to –60°E



Overview



Zoom



May 26th (MODIS)

