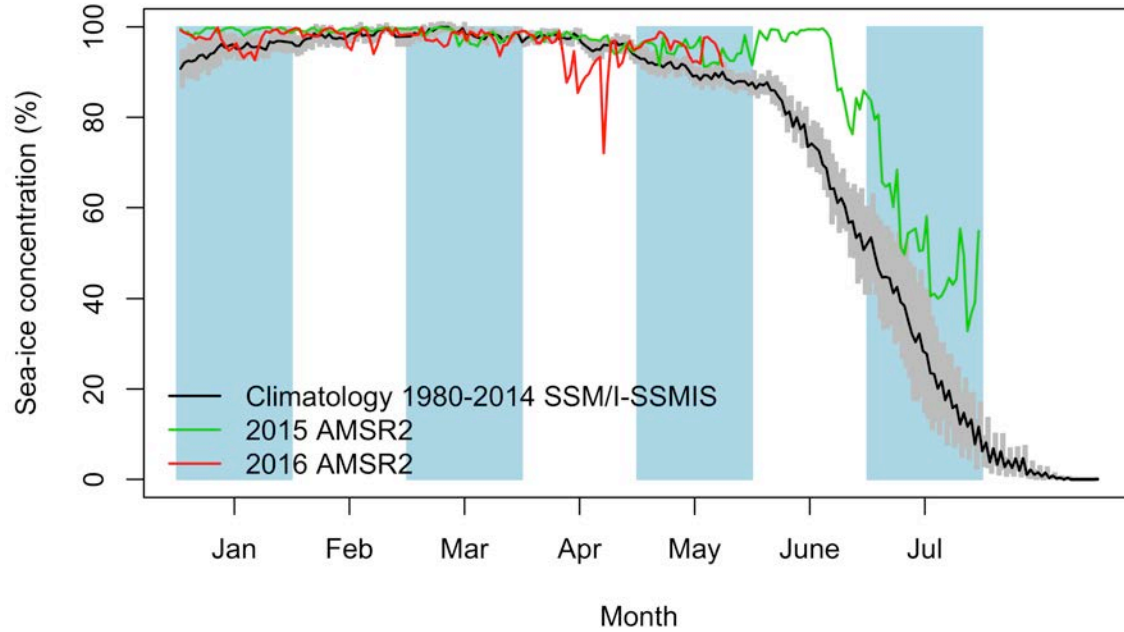


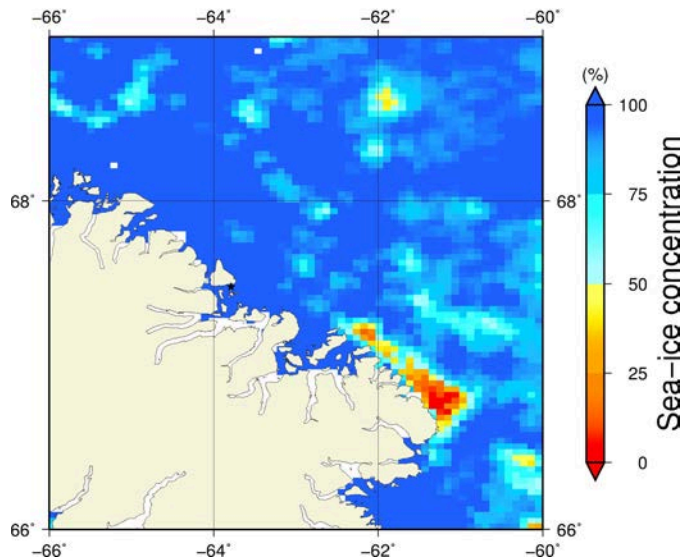
Comments

- We observe a long and narrow black area at the land-fast ice edge of the Sentinel-1 zoom image (Feature A). On the AMSR2 image, we have a sea-ice concentration of 100% at this area. My hypothesis is the following. It is an area of smooth ice at the land-fast ice edge.

May 23rd (AMSR2) Sea-ice concentration in the region 66° to 69°N and -66° to -60°E

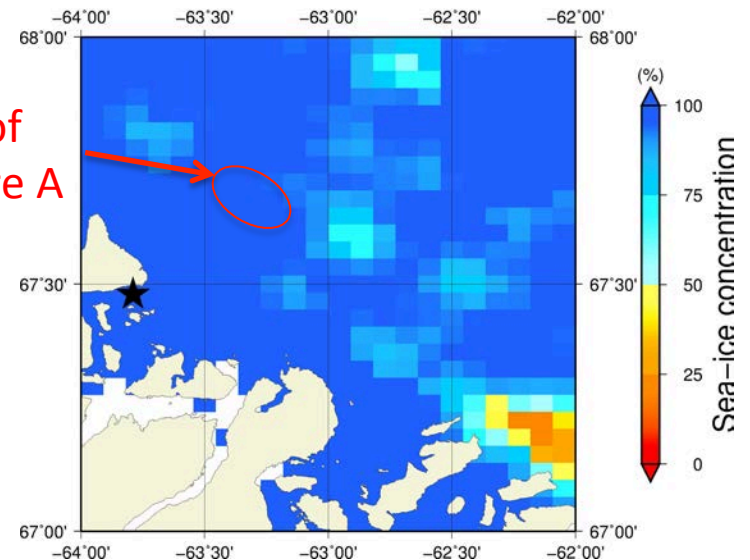


Overview

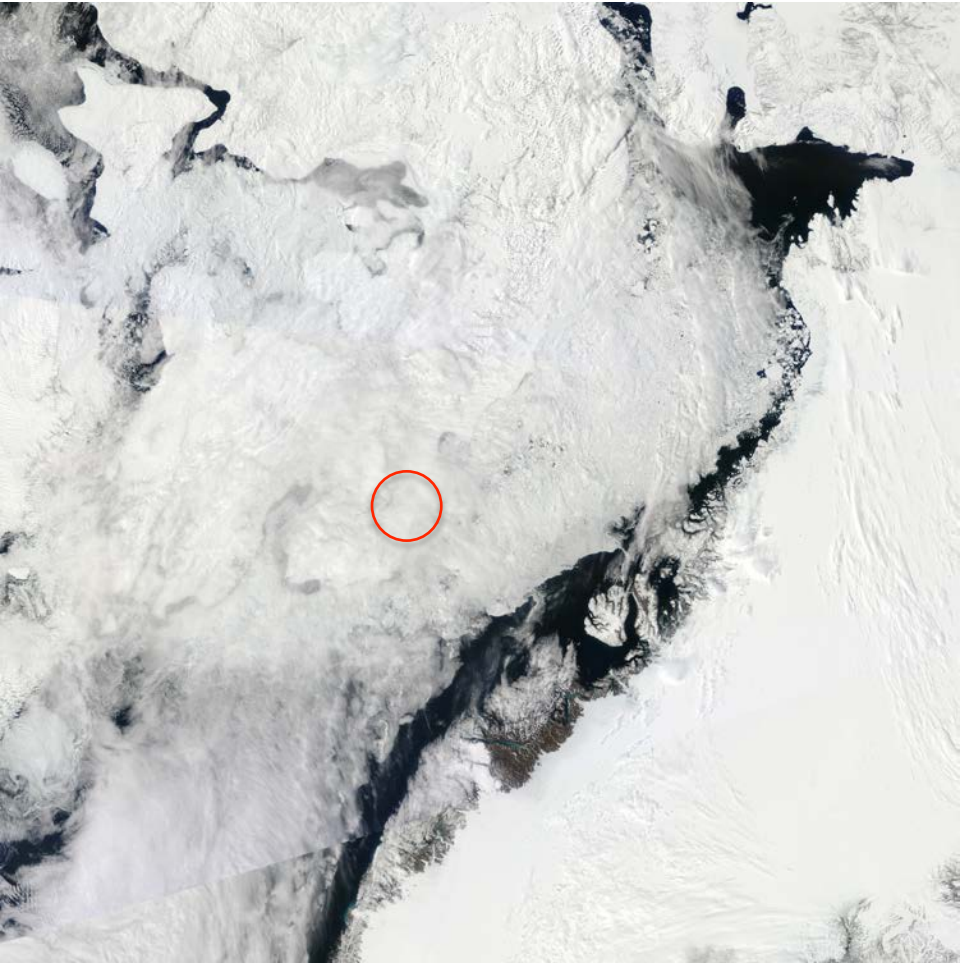


Zoom

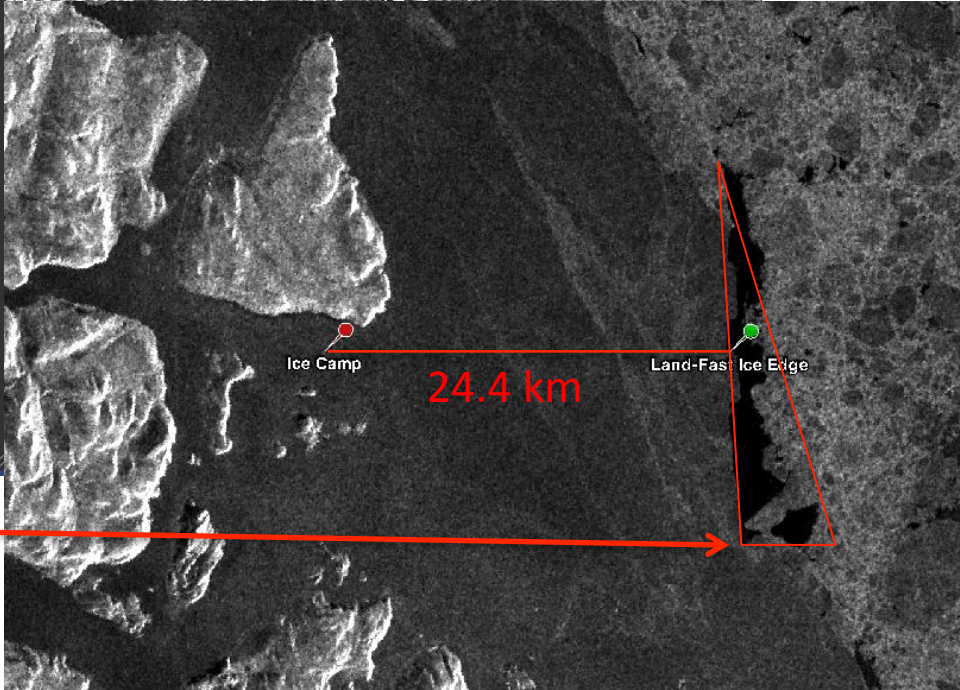
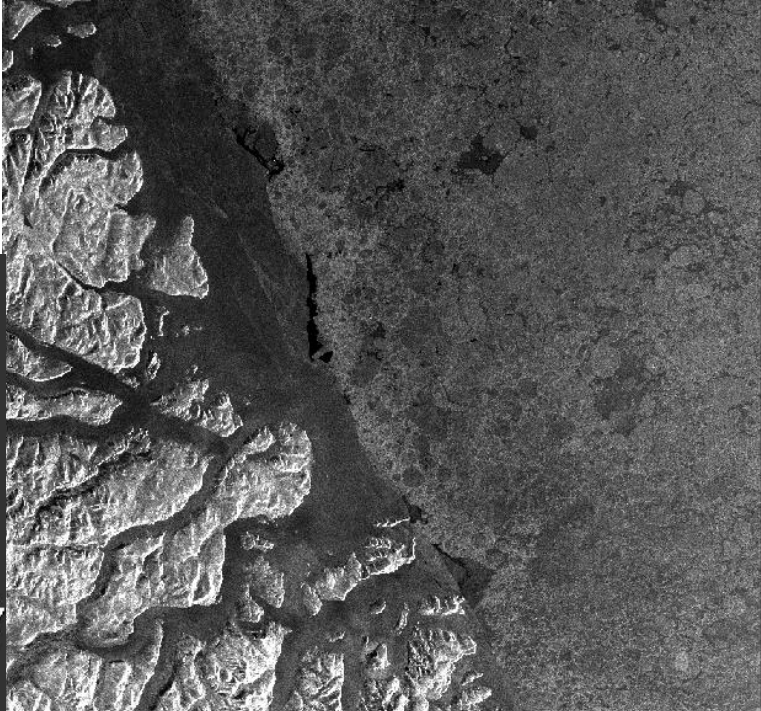
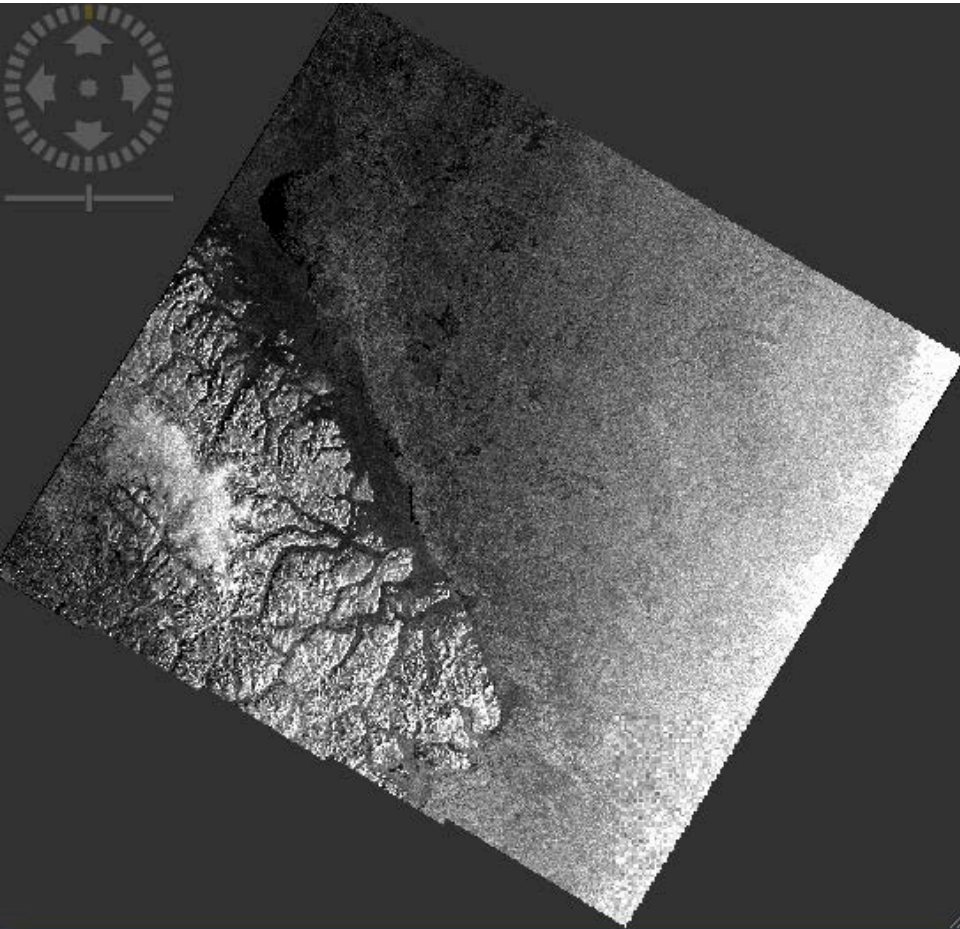
Zone of Feature A



May 23rd (MODIS)



May 23rd (Sentinel-1)



Feature A