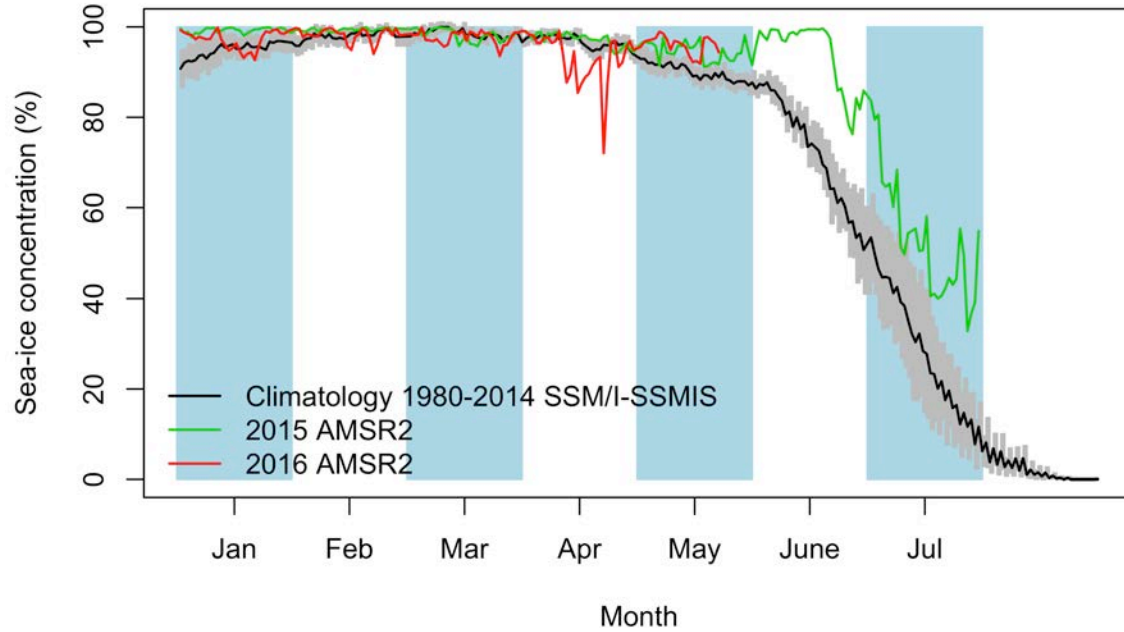


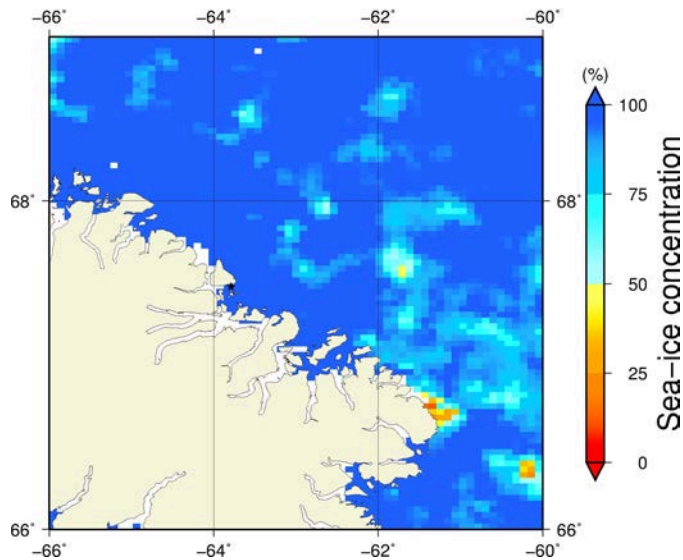
Comments

- There are many available images for yesterday May 22nd. There are AMSR2, MODIS, Landsat, RADARSAT-2 low-resolution and Sentinel-1 images.
- The distance between the ice camp and the land-fast ice edge is 24.5 km for Landsat and 24.1 km for Sentinel-1.
- On the Sentinel-1 synoptic image, we see that the distance between the ice camp and the marginal ice zone decreased from 294.0 km (May 5th) to 287.3 km (May 10th) to 248.4km (May 17th) to 245.1 km (May 18th) to 252.3 km (May 22nd).

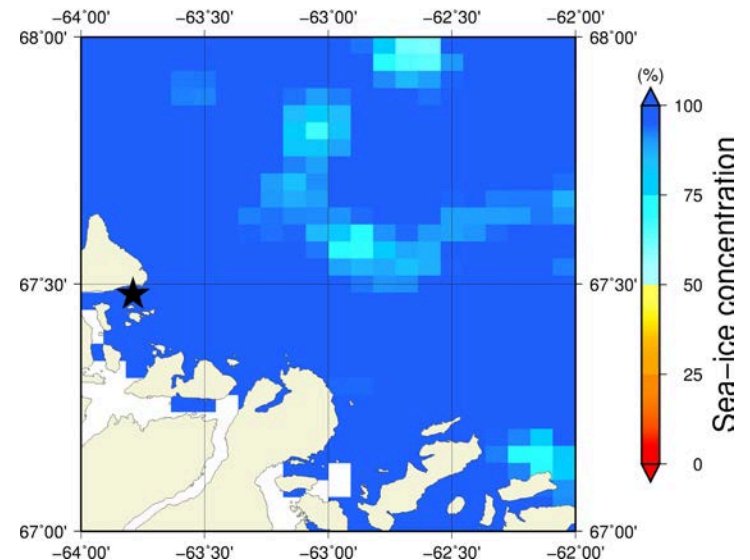
May 22nd (AMSR2) Sea - ice concentration in the region 66° to 69°N and -66° to -60°E



Overview



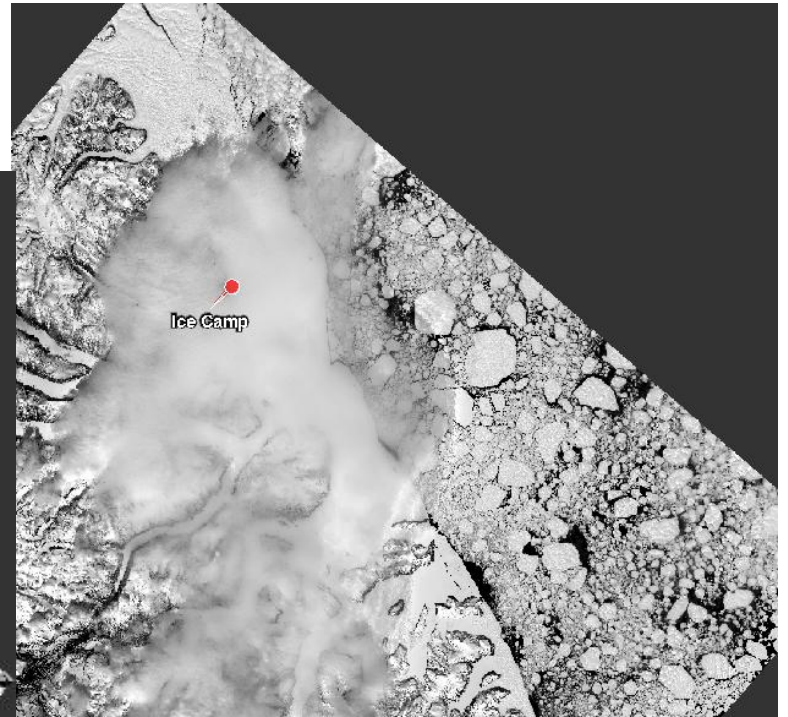
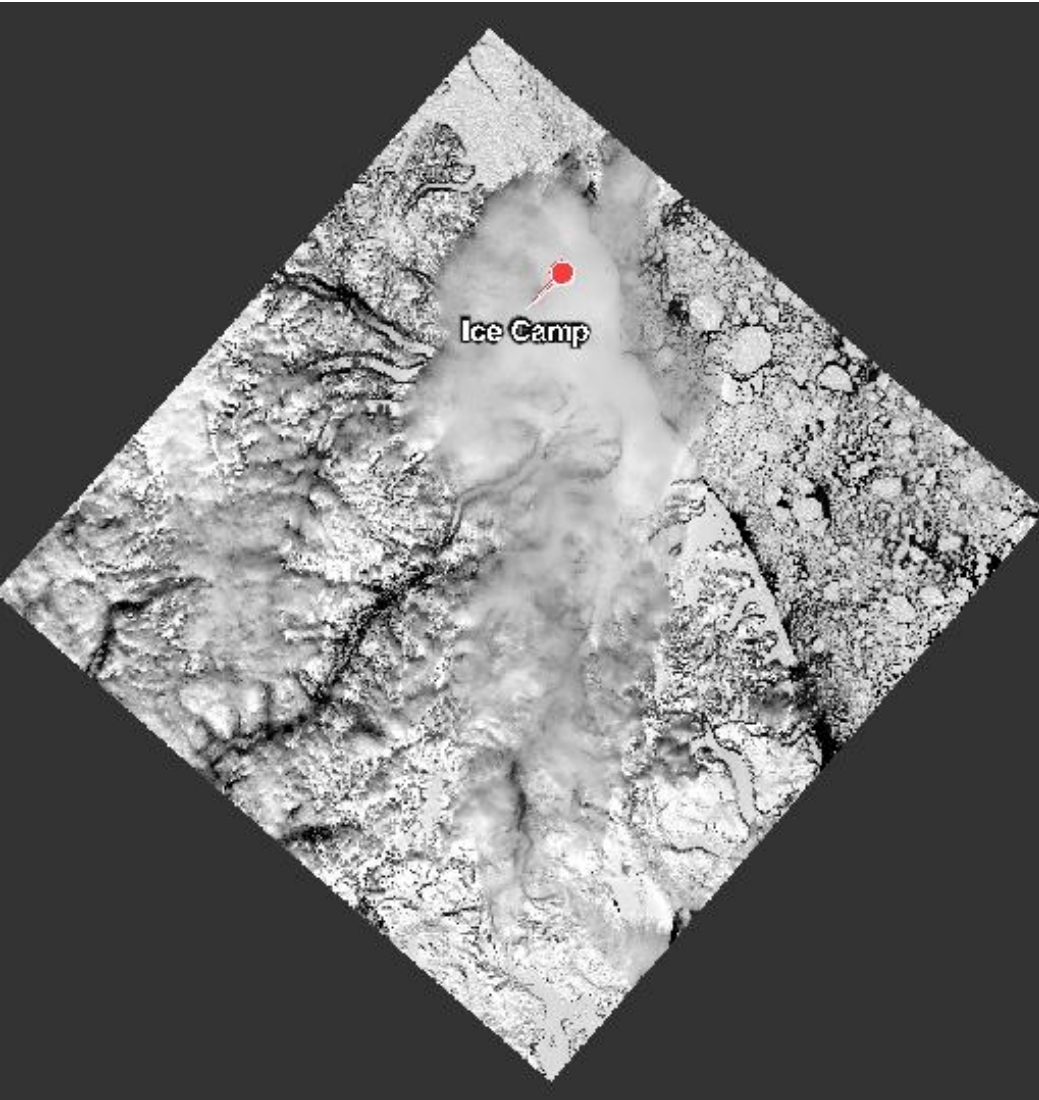
Zoom

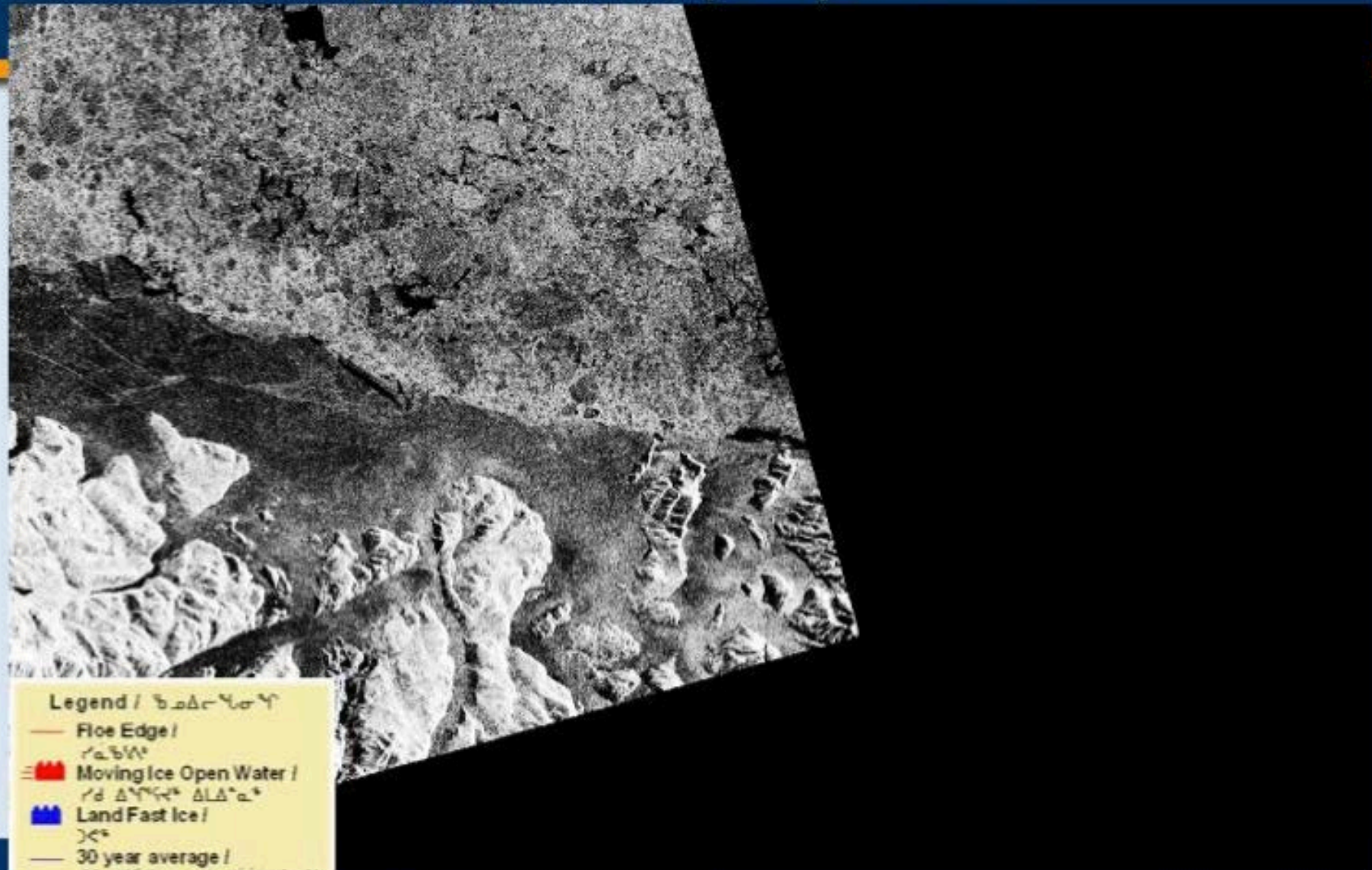


May 22nd (MODIS)





May 22nd (Landsat)





Legend / ᐅᓂᓕᓄᓂᓴ

- Floe Edge / ᓴᓂᓴᓴ
-  Moving Ice Open Water / ᓴᓂ ᓂᓴᓴᓴᓴ ᓂᓴᓴᓴᓴ
-  Land Fast Ice / ᓴᓴᓴ
- 30 year average / 30 ᓴᓴᓴᓴ ᓂᓴᓴᓴᓴ ᓴᓴᓴᓴᓴᓴ

May 22nd (Sentinel-1)

