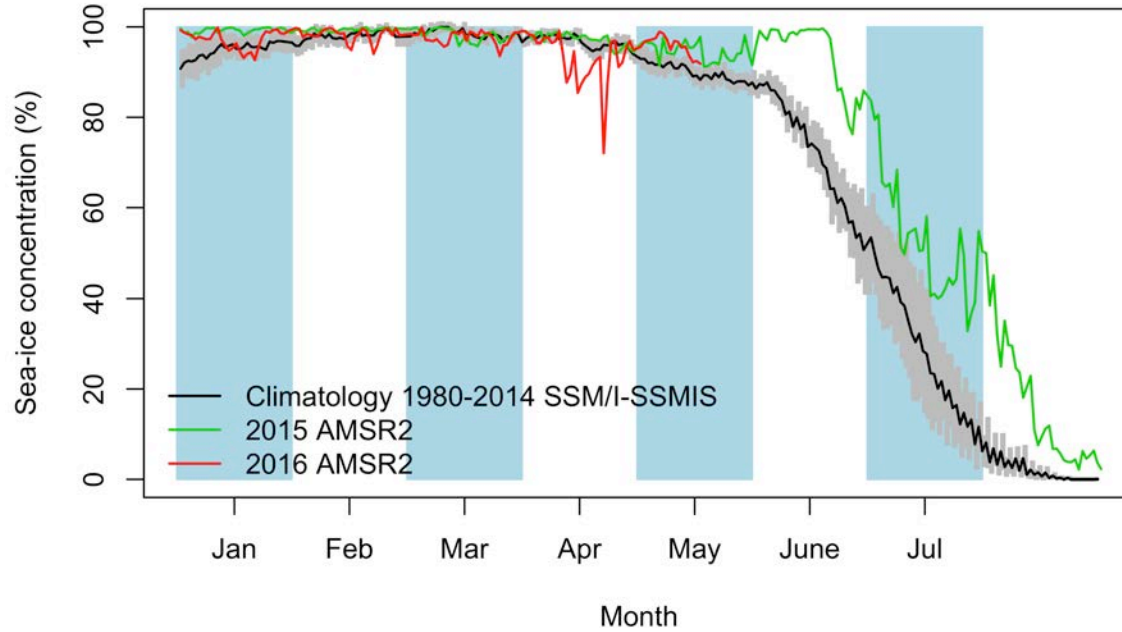


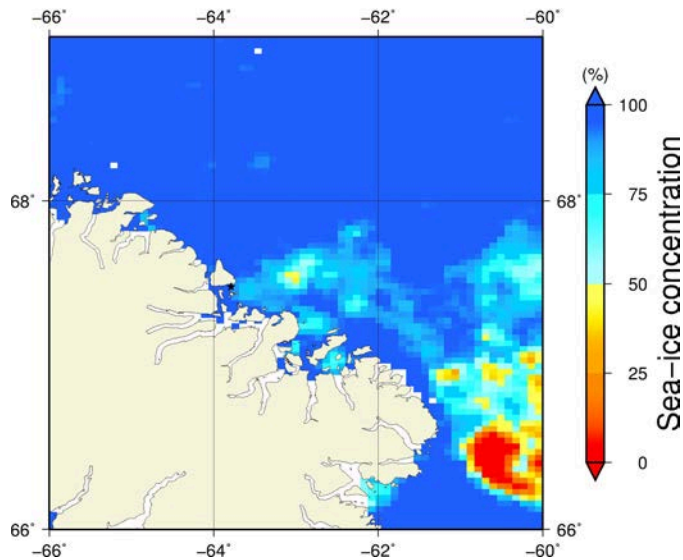
Comments

- On the AMSR2 zoom image, we see that the sea-ice concentration is below 100% at the exact ice camp location for the first time of the year. It is around 83% instead.
- On the Sentinel-1 image, we see that the distance between the ice camp and the land-fast ice edge is 24.9 km which is unchanged from May 5th (24.7 km) and May 10th (24.9 km). But, the distance between the ice camp and the marginal ice zone decreases. It decreased from 294.0 km (May 5th) to 287.3 km (May 10th) to 248.4km (May 17th).
- Even if the distance between the ice camp and the land-fast ice edge is unchanged, we see both on the AMSR2 images and on the Sentinel-1 images that the land-fast ice is melting near or even at the ice camp. See Feature A.
- A comparison between AMSR2 zoom images of this time of year between 2015 and 2016 is shown at the end of this report.

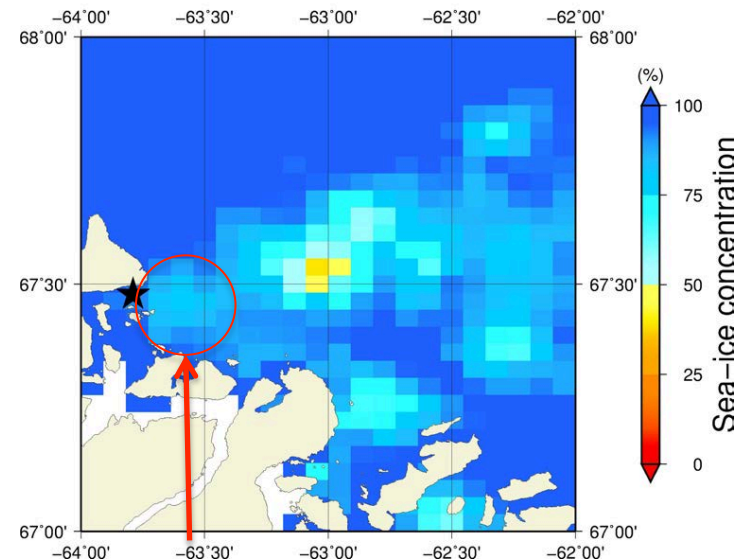
May 17th (AMSR2) Sea - ice concentration in the region 66° to 69°N and -66° to -60°E



Overview



Zoom

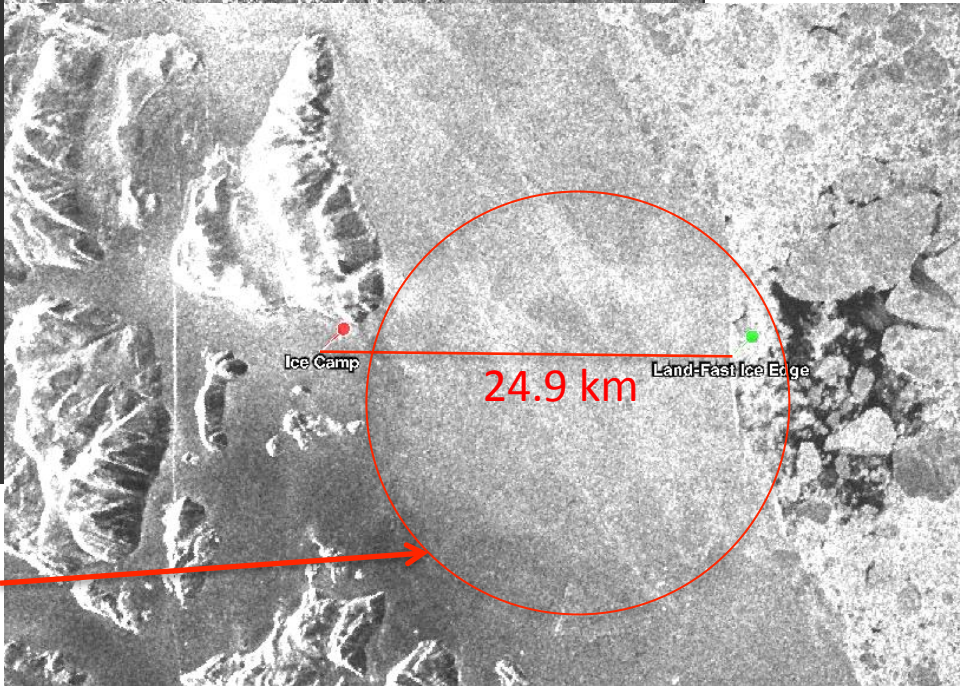
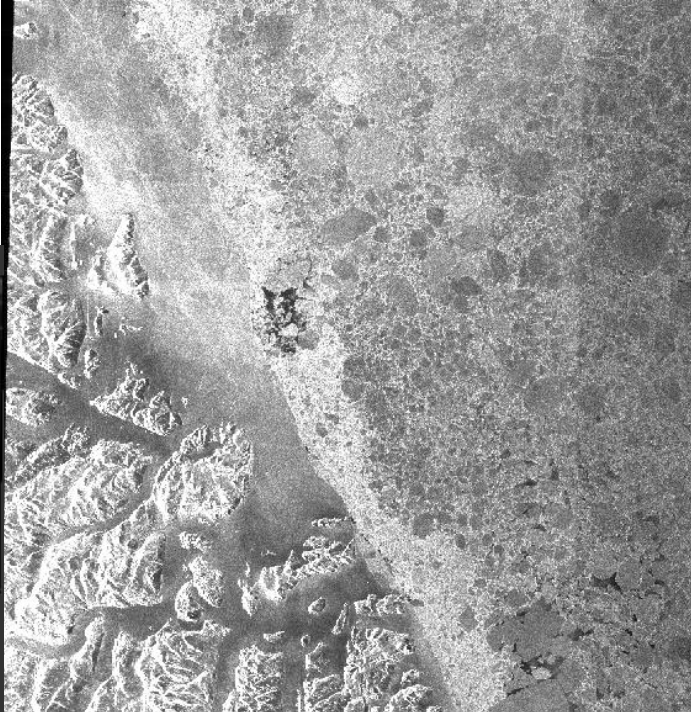
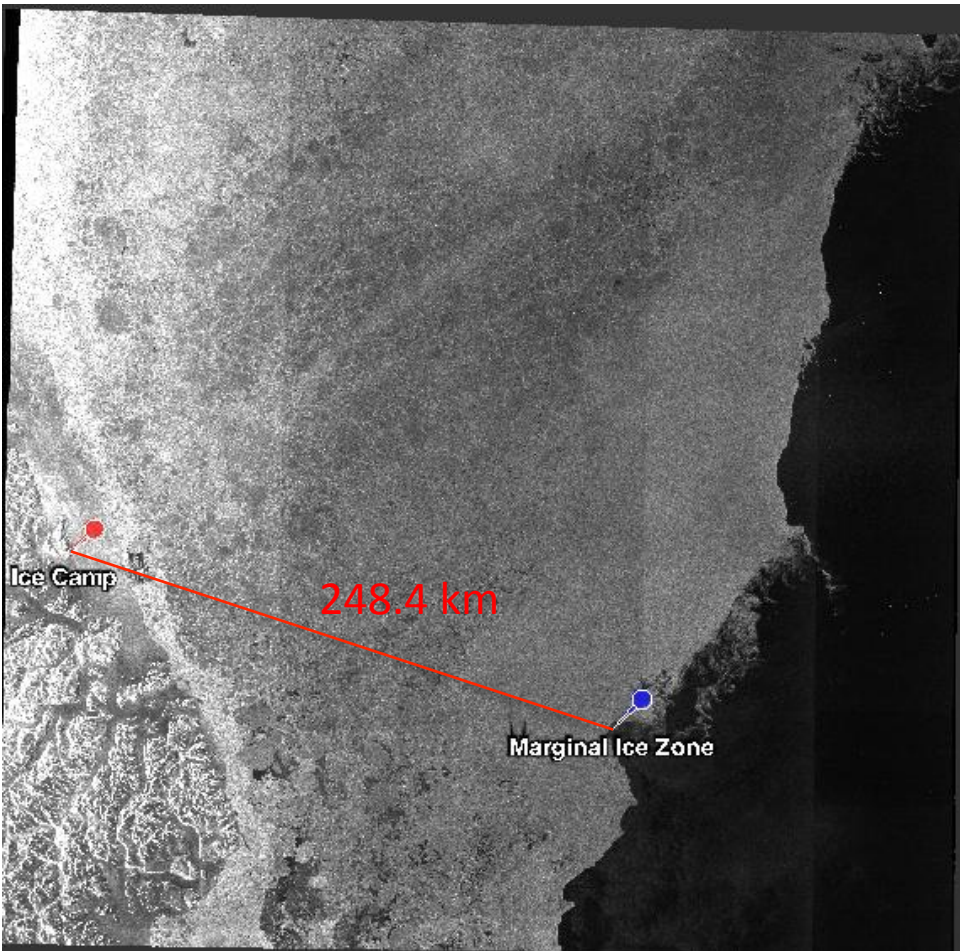


Feature A

May 17th (MODIS)



May 17th (Sentinel-1)

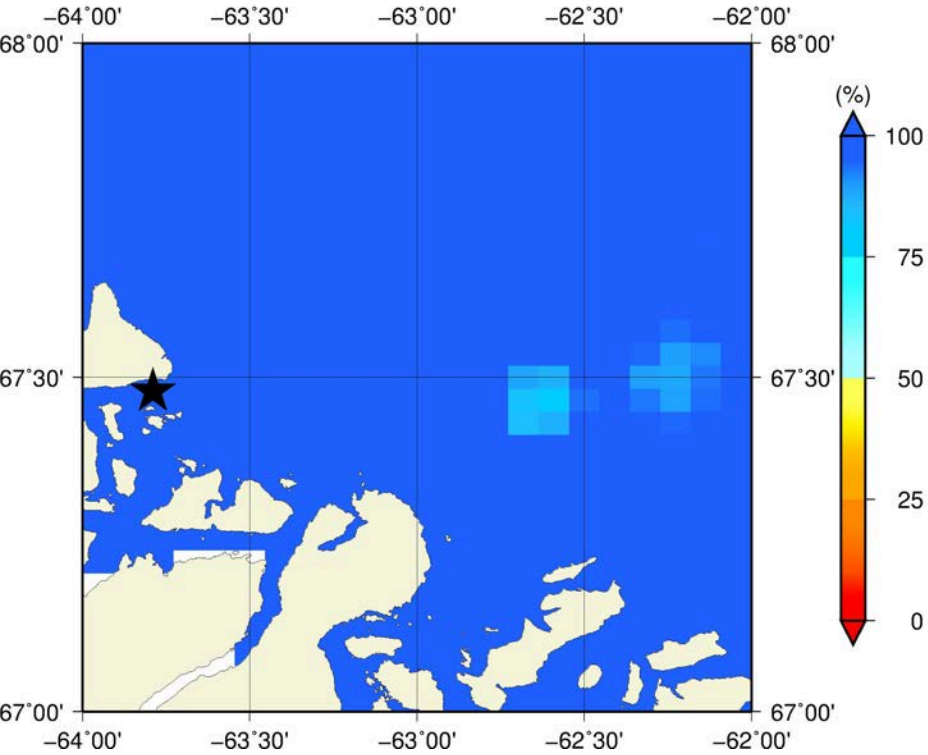


Feature A

May 17th 2015 (AMSR2)

May 17th 2016 (AMSR2)

Zoom



Zoom

