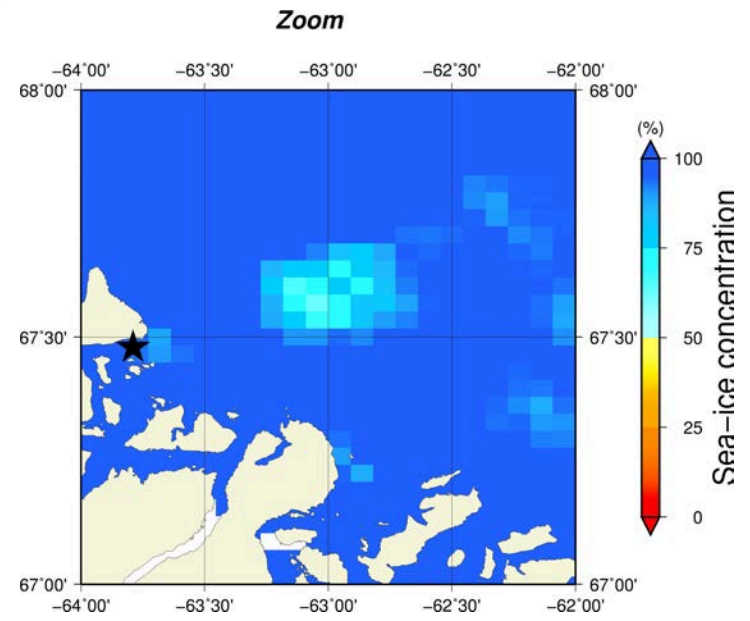
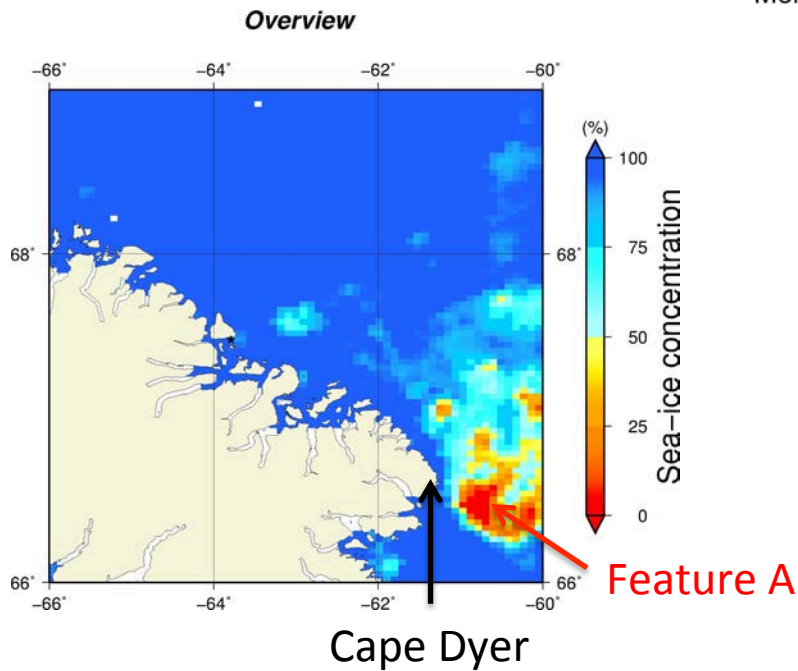
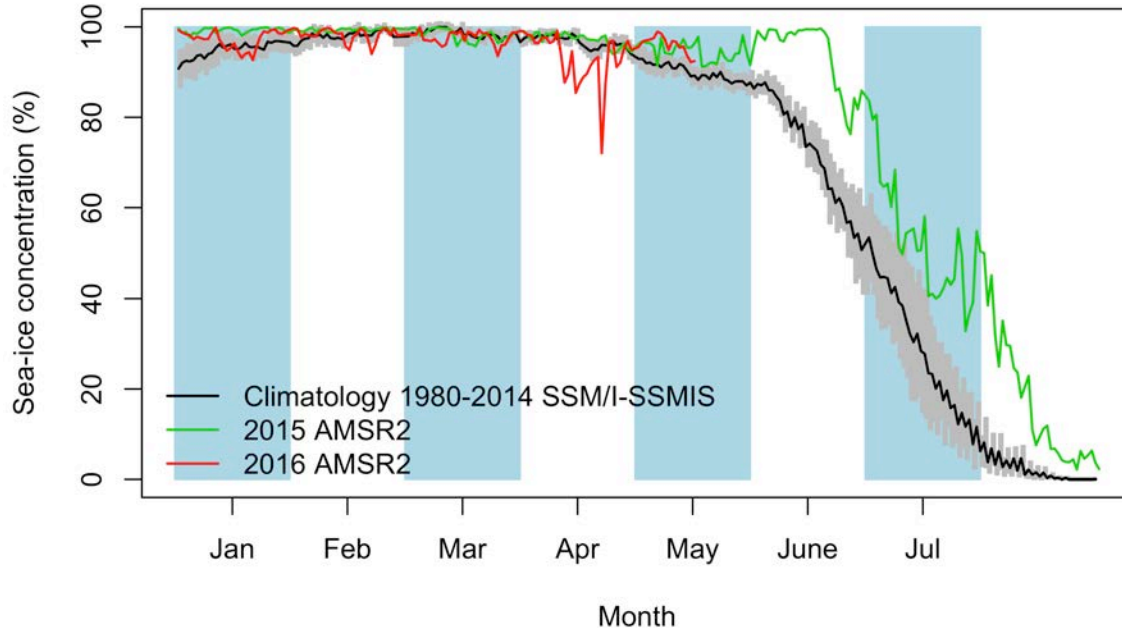


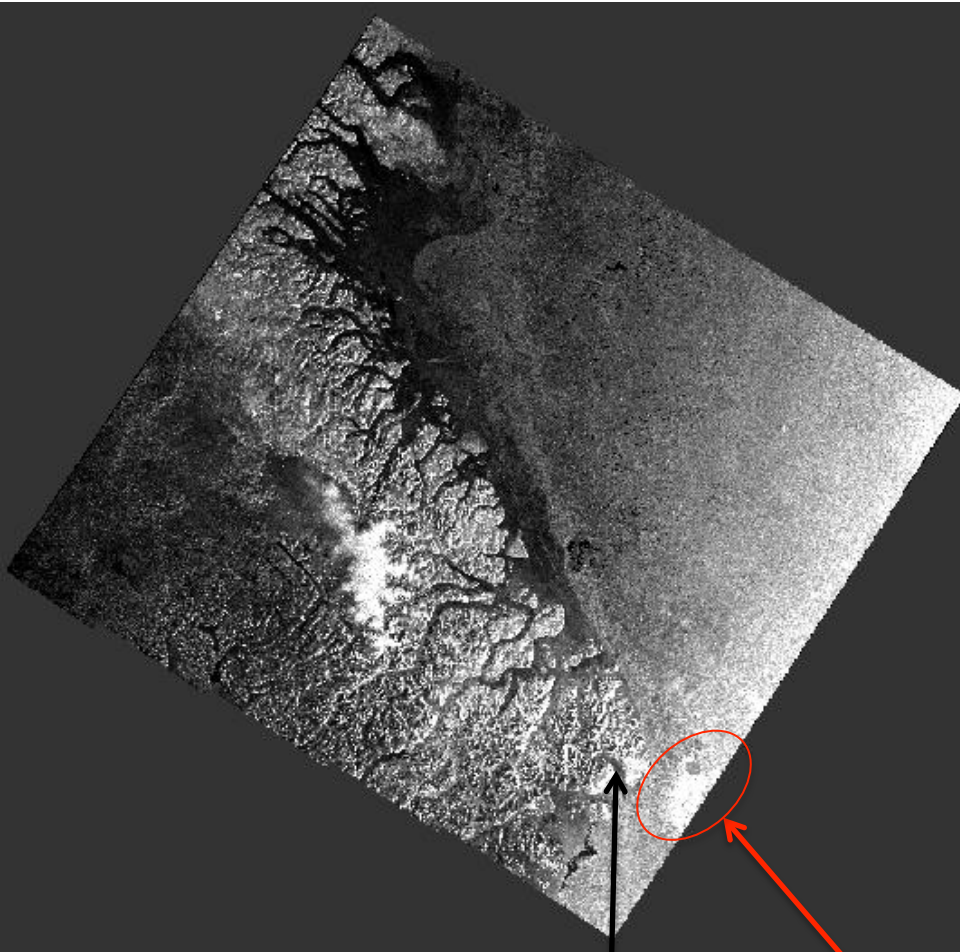
Comments

- AMSR2 images are back.
- Yesterday's MODIS images from the NASA website didn't cover Broughton Island area (<https://lance.modaps.eosdis.nasa.gov/imagery/subsets/?mosaic=Arctic.2016137.terra.1km.jpg>). Therefore, there is no MODIS images in the today's report.
- There is an open water zone off the coast of Cape Dyer (Feature A). It can be seen on the AMSR2 overview image and the Sentinel-1 synoptic image. In 2015, the open water zone reaching the ice camp was coming from Cape Dyer and not from the middle of Davis Strait. It will be interesting to watch the evolution of the open water zone off the coast of Cape Dyer to see if it stays and grows or if it vanishes in the next days and weeks.

May 16th (AMSR2) Sea-ice concentration in the region 66° to 69°N and -66° to -60°E



May 16th (Sentinel-1)



Cape Dyer **Feature A**

