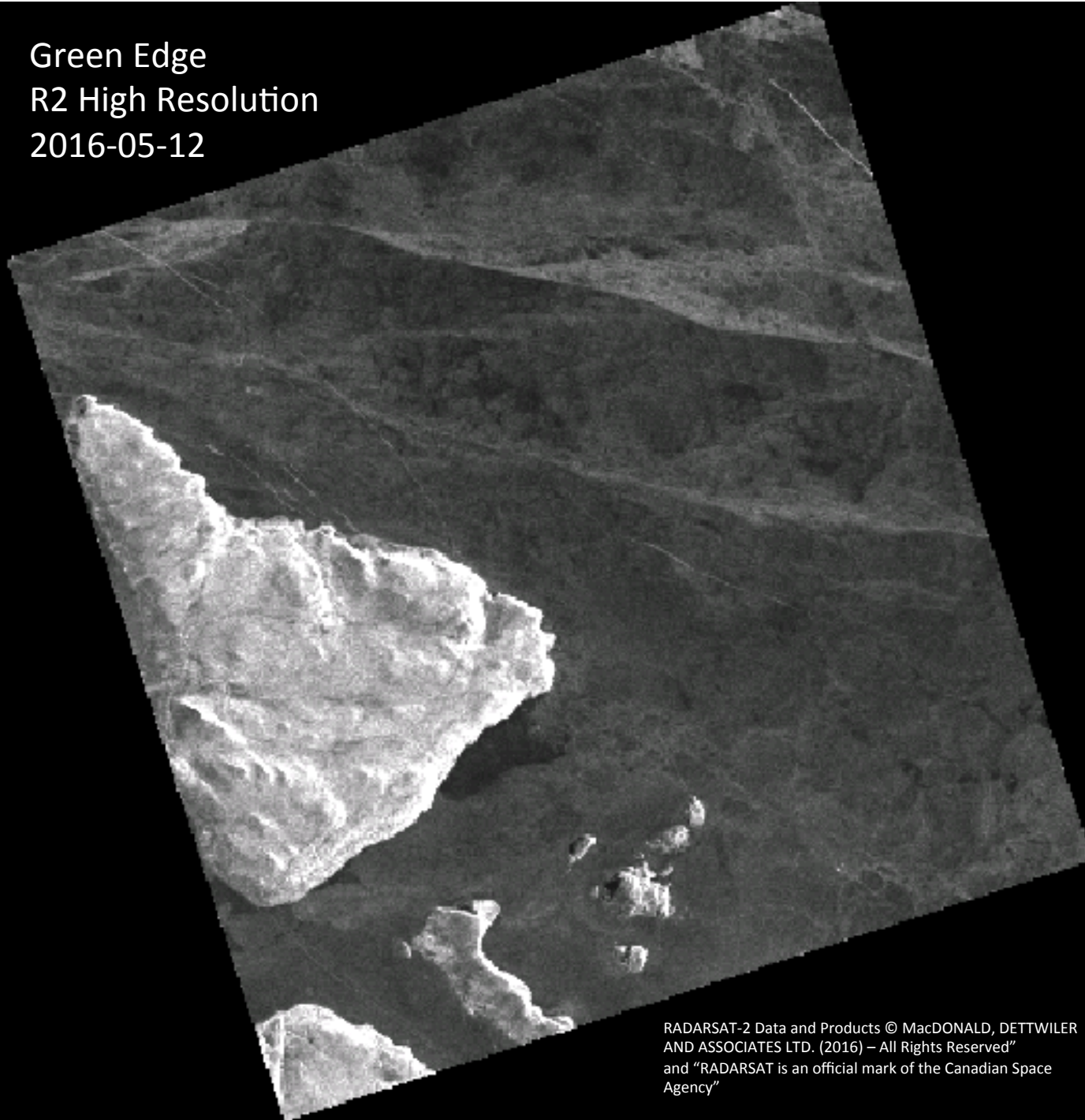


# Comments

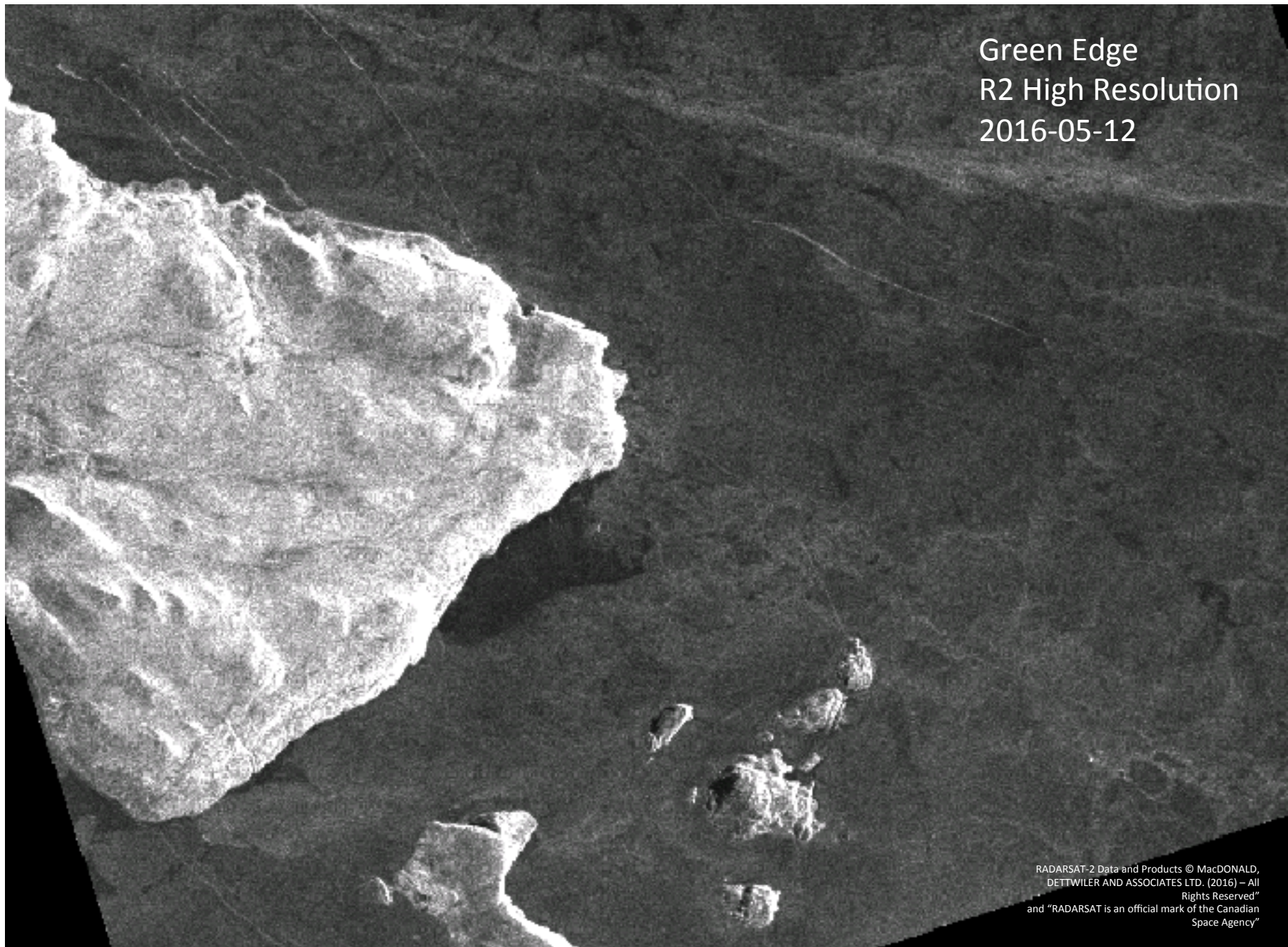
- Marilee Pregitzer from the Canadian Ice Service (CIS) sent us new high-resolution RADARSAT-2 images.
- We had too MODIS and Landsat images of yesterday May 13<sup>th</sup>. MODIS and Landsat are optical sensors. Optical sensors receive wavelengths only in the visible spectrum. The clouds block these wavelengths. Yesterday was a cloudy day at the ice camp. Therefore, the yesterday's MODIS and Landsat images are not very useful for the ice camp.

Green Edge  
R2 High Resolution  
2016-05-12



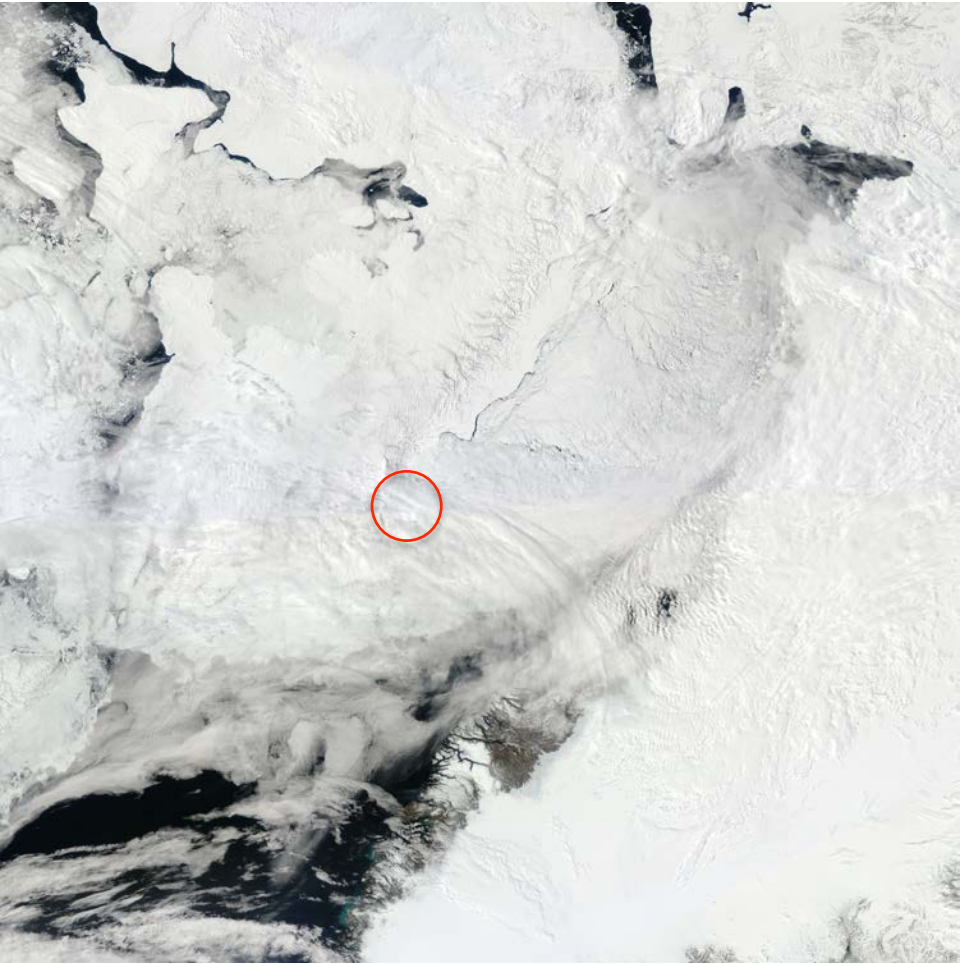
RADARSAT-2 Data and Products © MacDONALD, DETTWILER  
AND ASSOCIATES LTD. (2016) – All Rights Reserved”  
and “RADARSAT is an official mark of the Canadian Space  
Agency”

Green Edge  
R2 High Resolution  
2016-05-12



RADARSAT-2 Data and Products © MacDONALD,  
DETTWILER AND ASSOCIATES LTD. (2016) – All  
Rights Reserved”  
and “RADARSAT is an official mark of the Canadian  
Space Agency”

May 13<sup>th</sup> (MODIS)



May 13<sup>th</sup> (Landsat)

