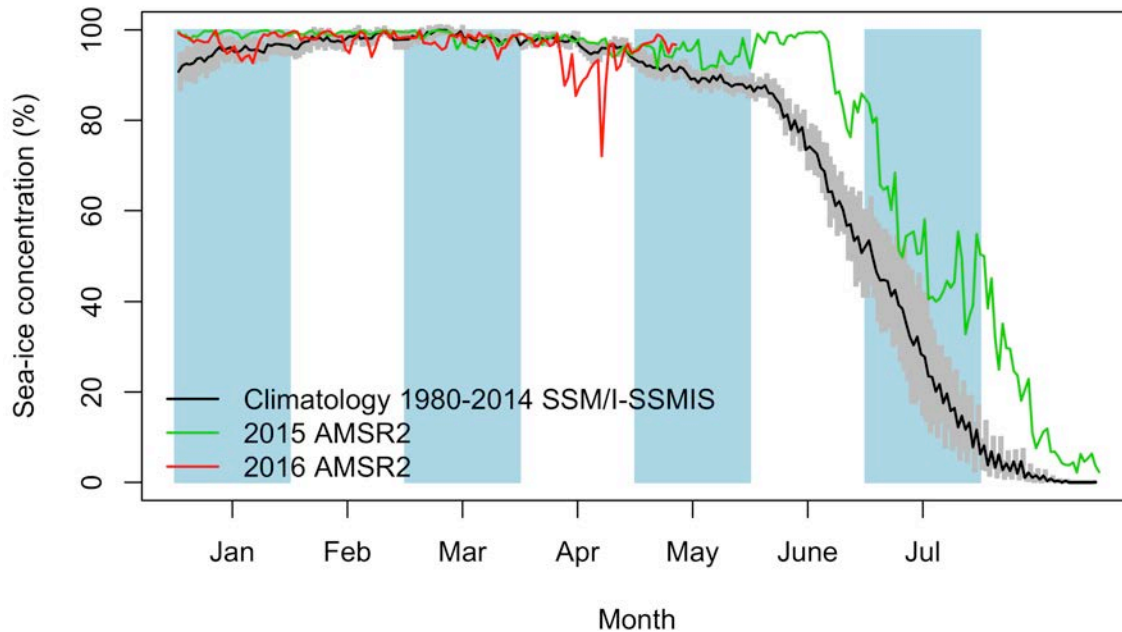


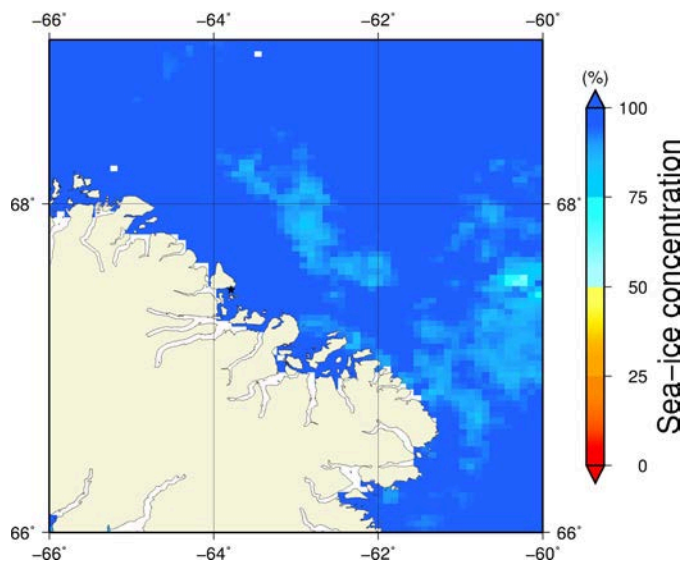
Comments

- There are new AMSR2, MODIS, Sentinel-1 images and ice charts from the Canadian Ice Service (CIS).

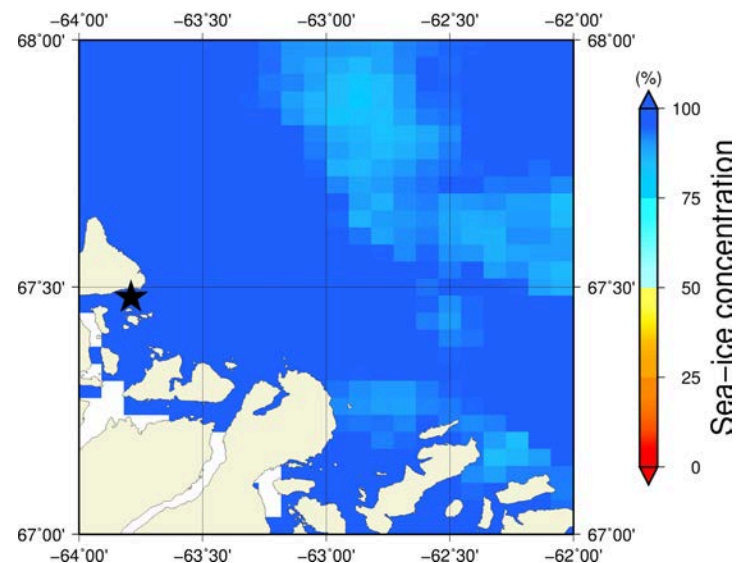
May 11th (AMSR2) Sea-ice concentration in the region 66° to 69°N and -66° to -60°E



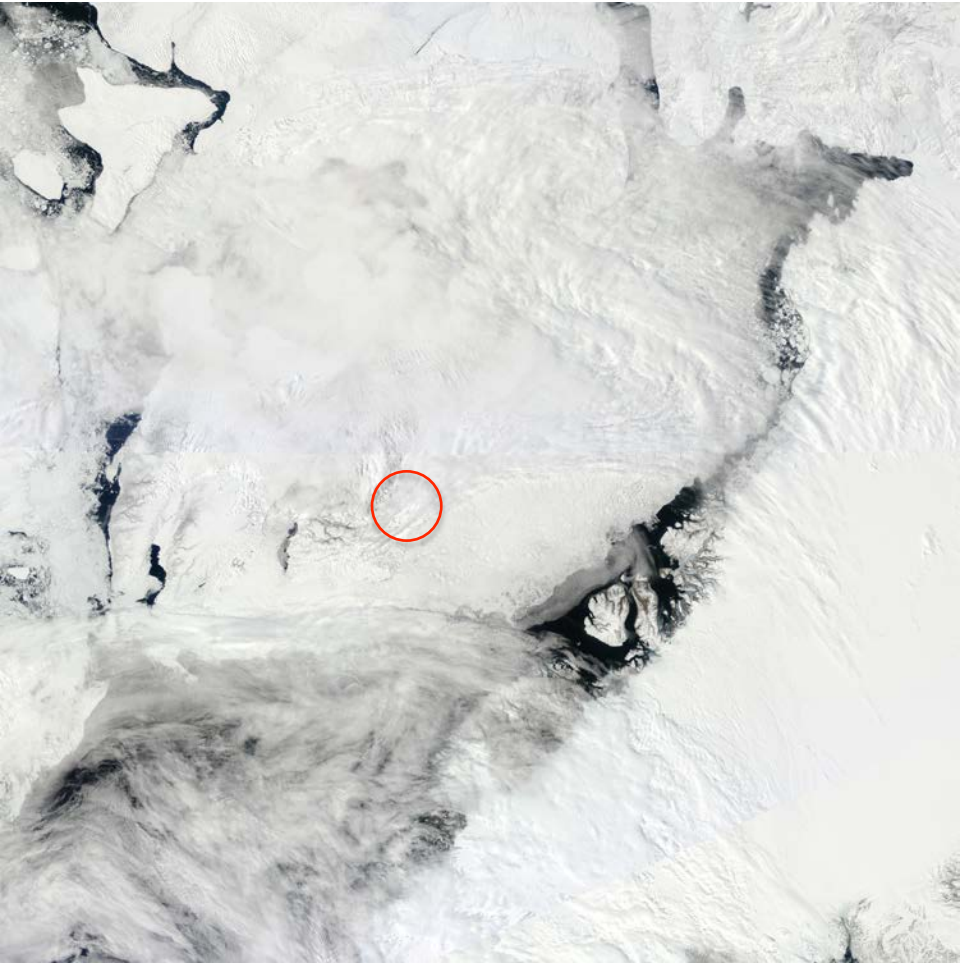
Overview



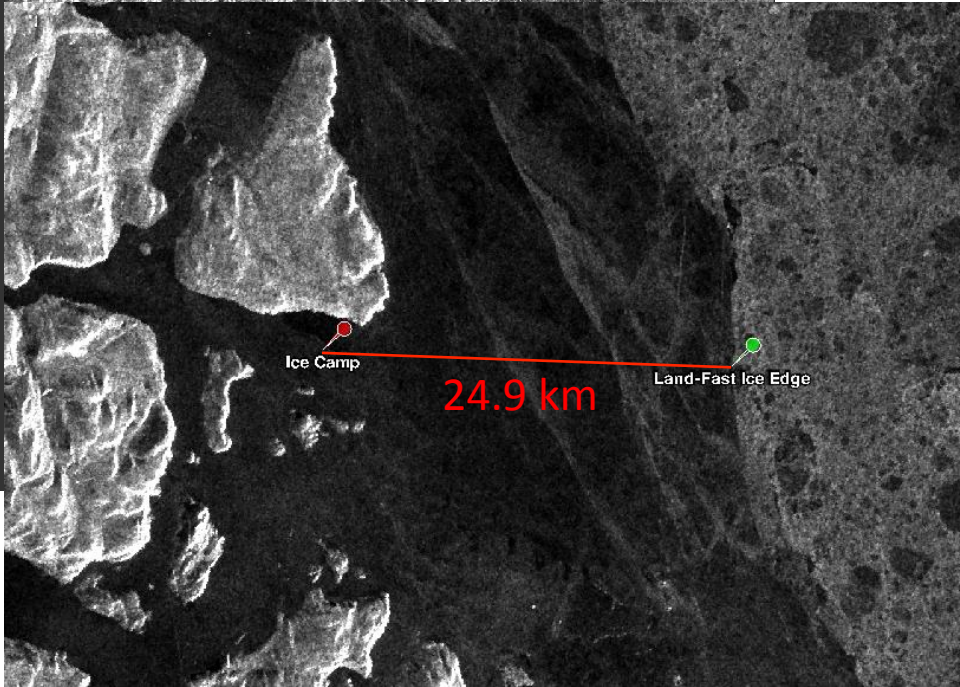
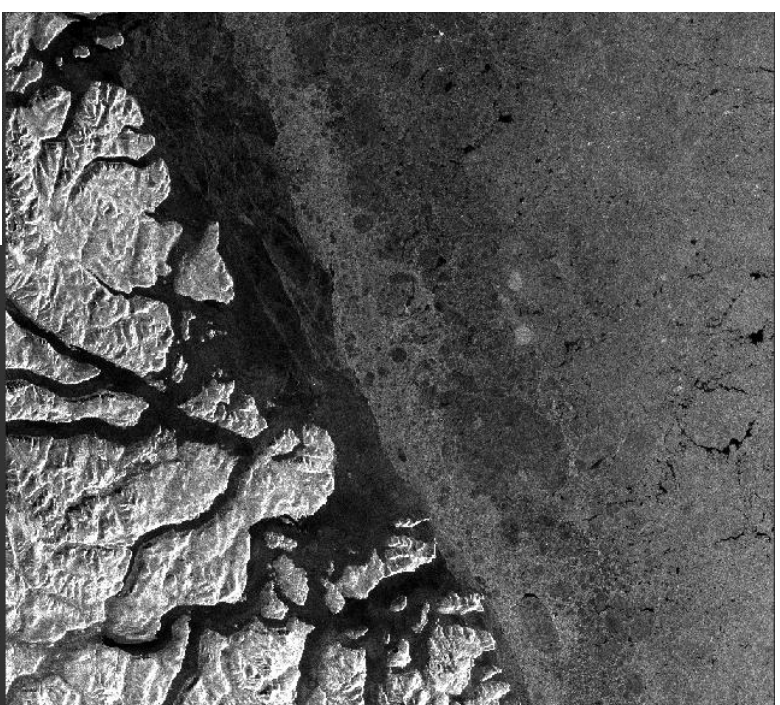
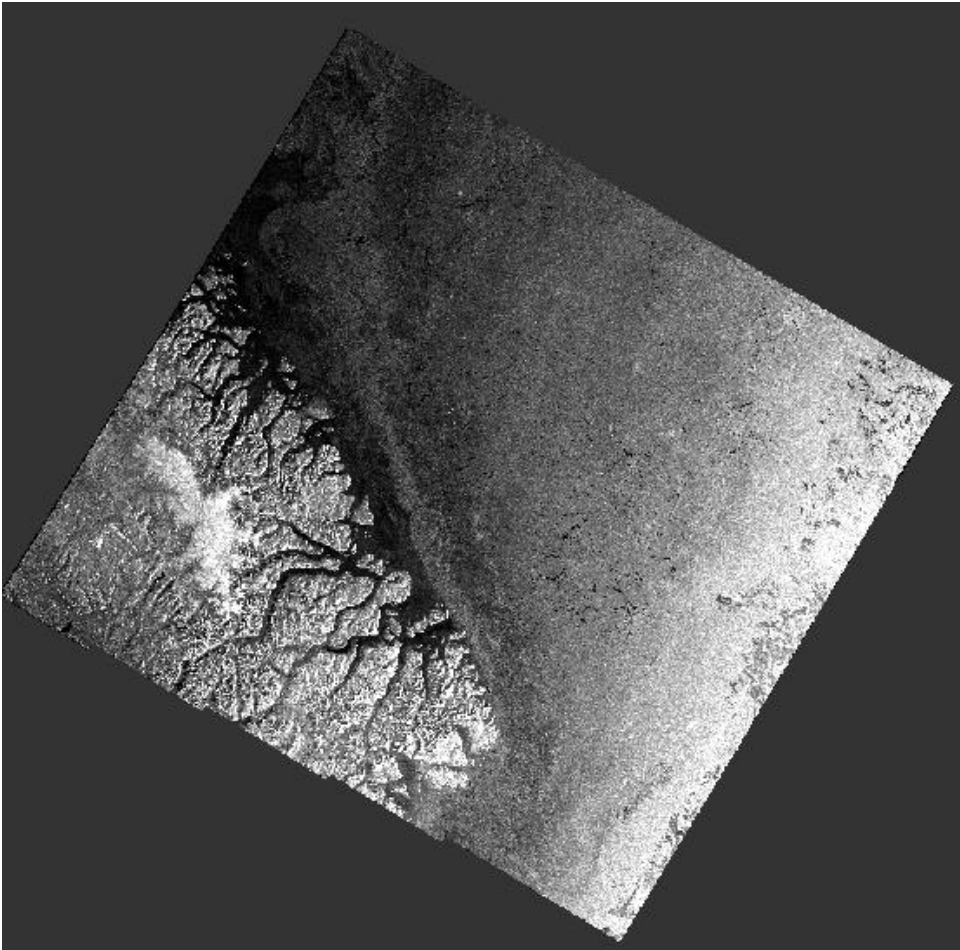
Zoom



May 11th (MODIS)



May 11th (Sentinel-1)



Sea-ice concentration

CIS Ice charts

Stage of development

