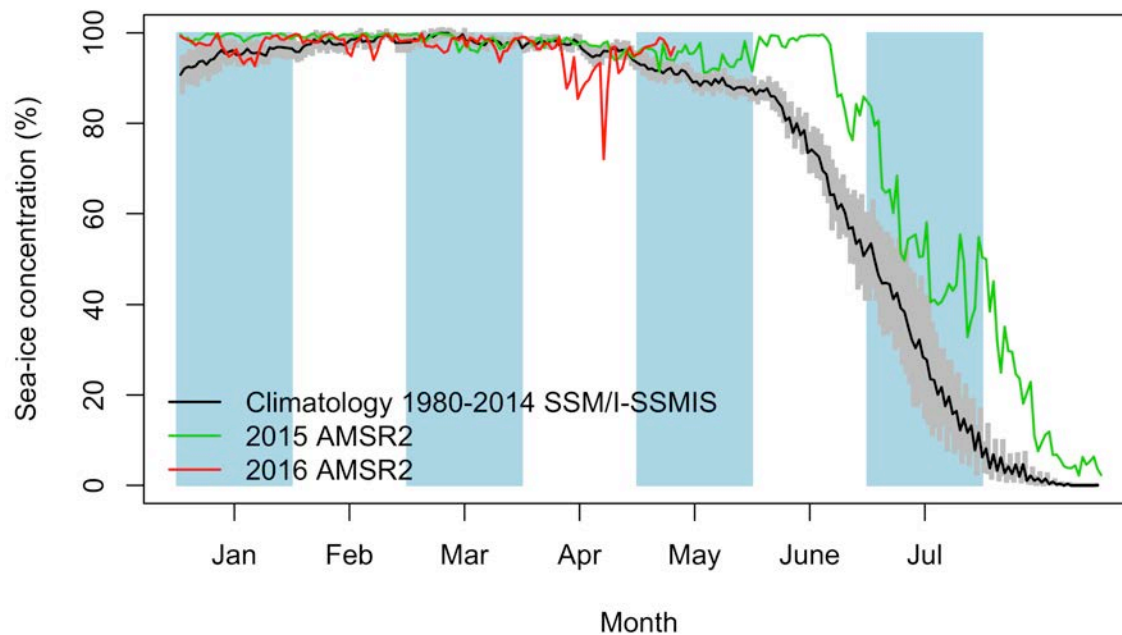


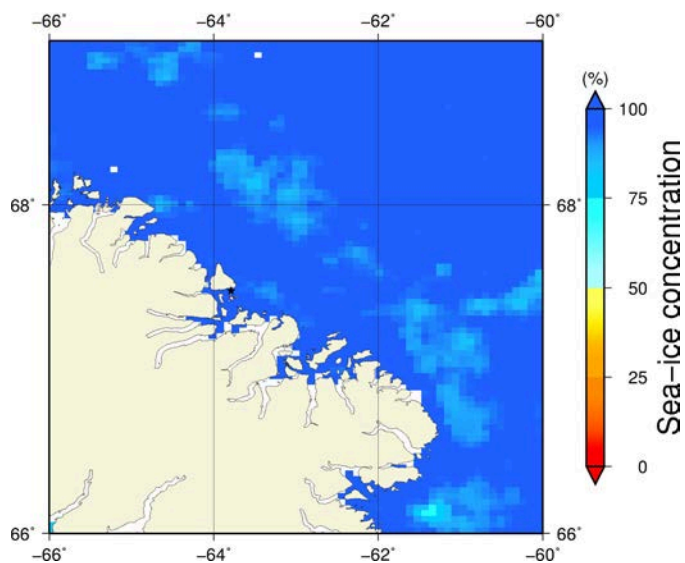
Comments

- The distance between the marginal ice zone from the middle of Davis Strait and the ice camp was reduced from 294.0 km to 287.3 km between May 5th and May 10th.
- But, the marginal ice zone rejoining the ice camp is not the one coming from the middle of Davis Strait. It is instead the marginal ice zone coming from Cape Dyer. See the ice chart of July 13th 2015 at the end of this report.
- For information, the last station at the ice camp was done on July 14th in 2015.
- Otherwise, we see what could be snowmobile tracks on the Sentinel-1 zoom image.

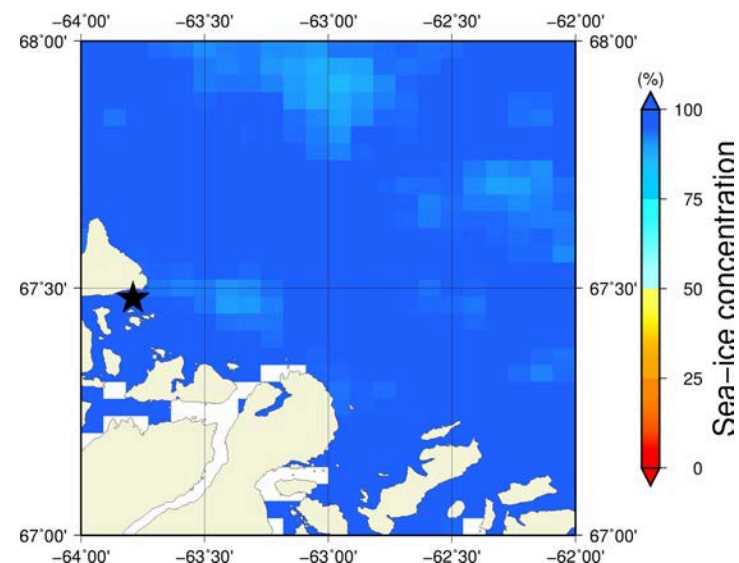
May 10th (AMSR2) Sea – ice concentration in the region 66° to 69°N and –66° to –60°E



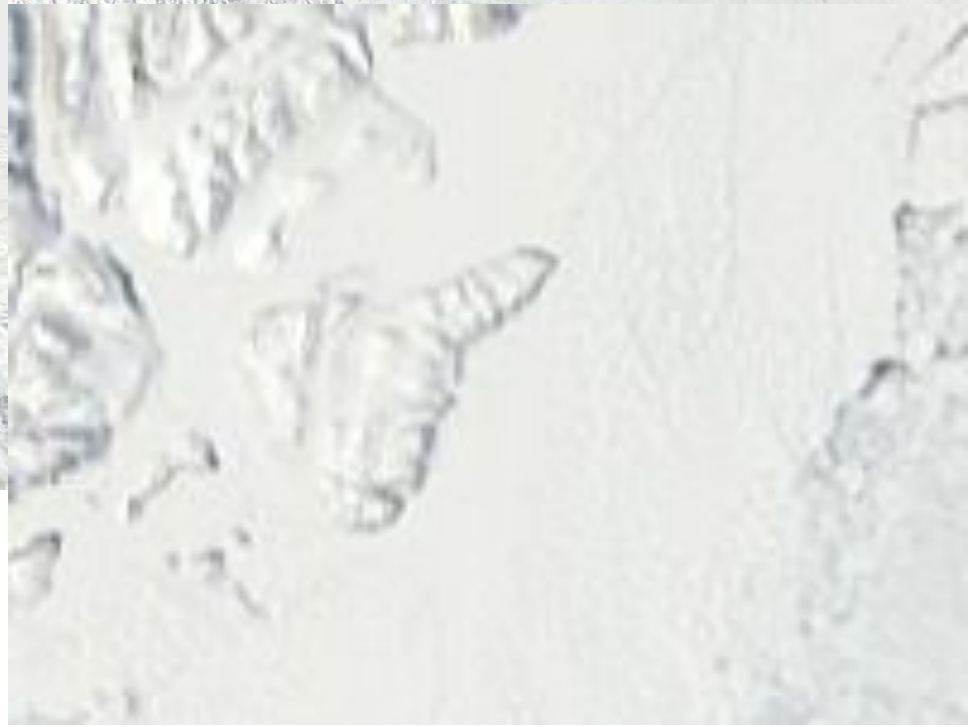
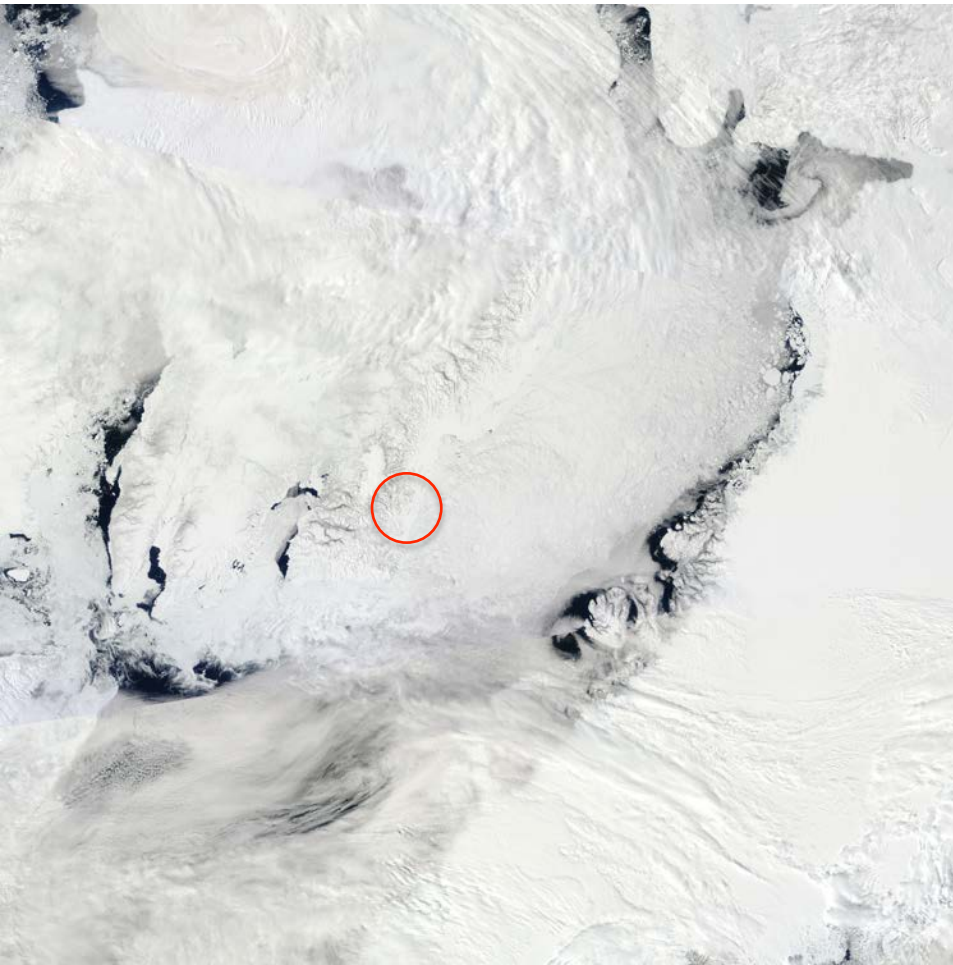
Overview



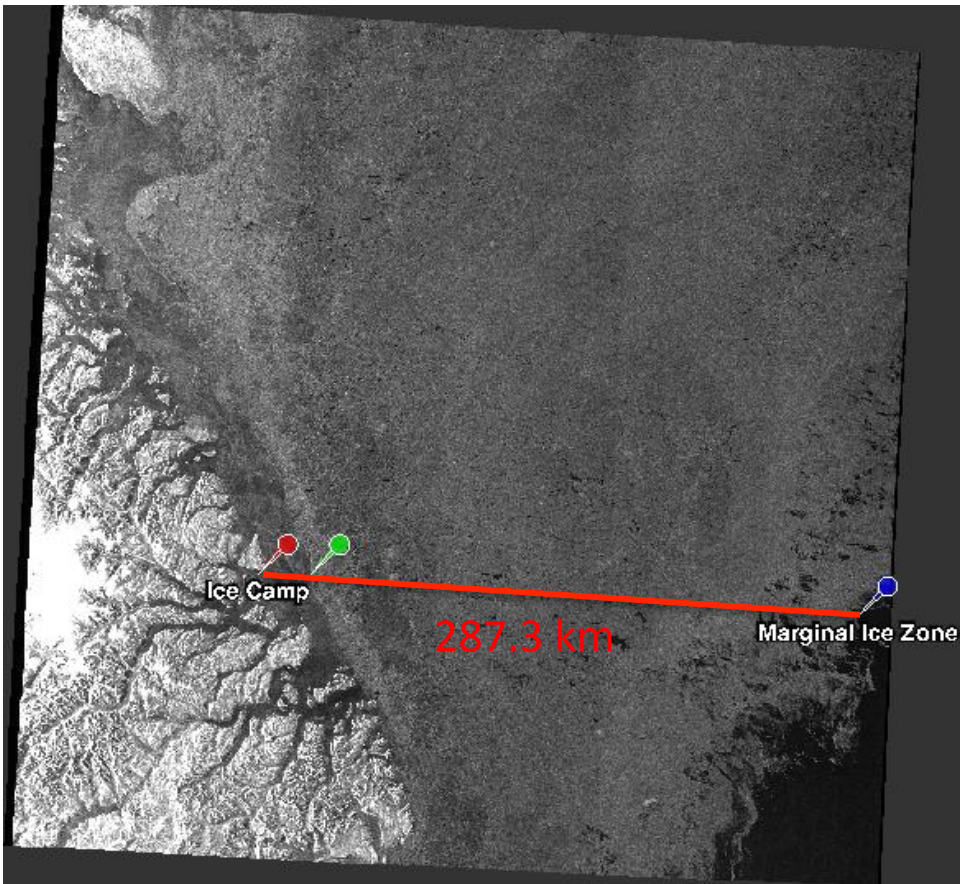
Zoom



May 10th (MODIS)



May 10th (Sentinel-1)

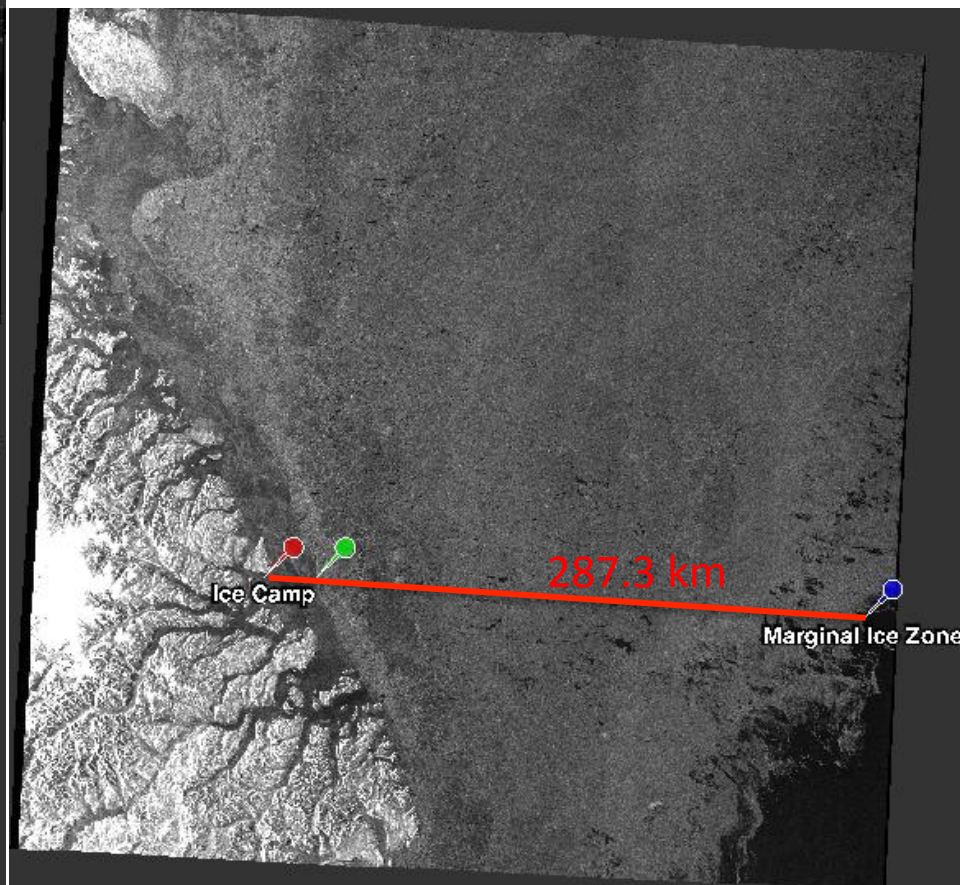
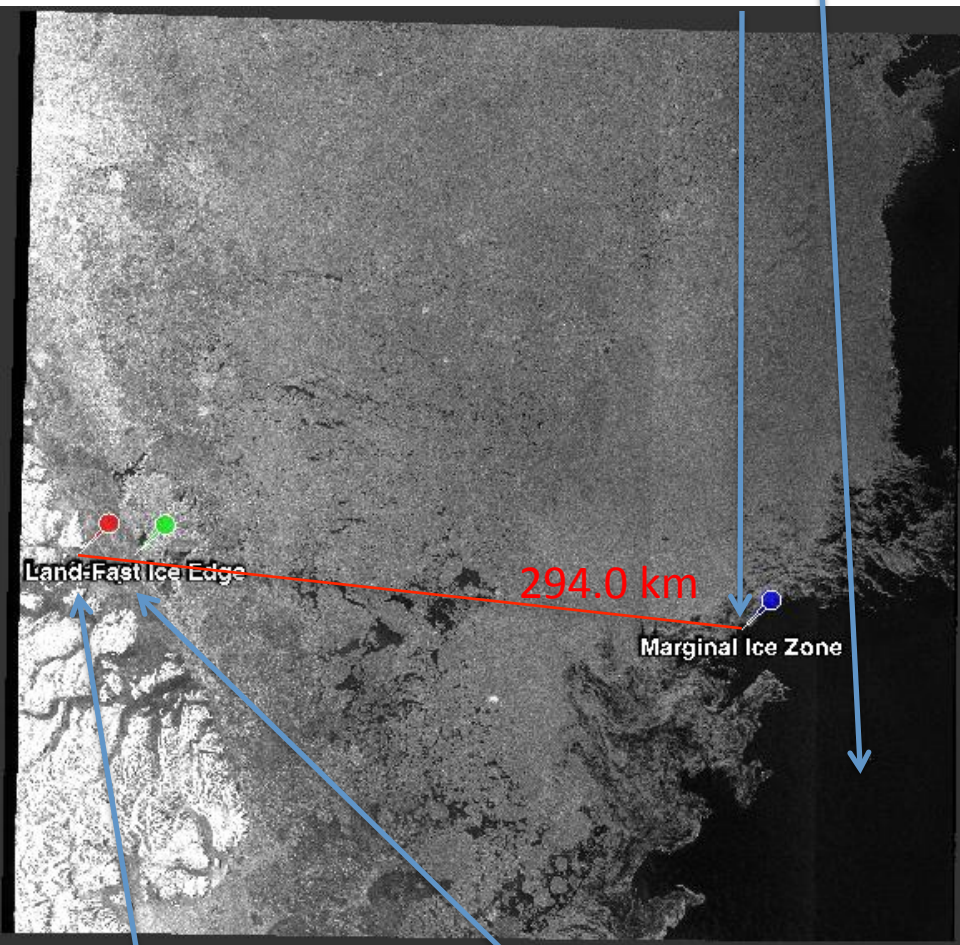


Snowmobile tracks?

May 5th (Sentinel-1)

May 10th (Sentinel-1)

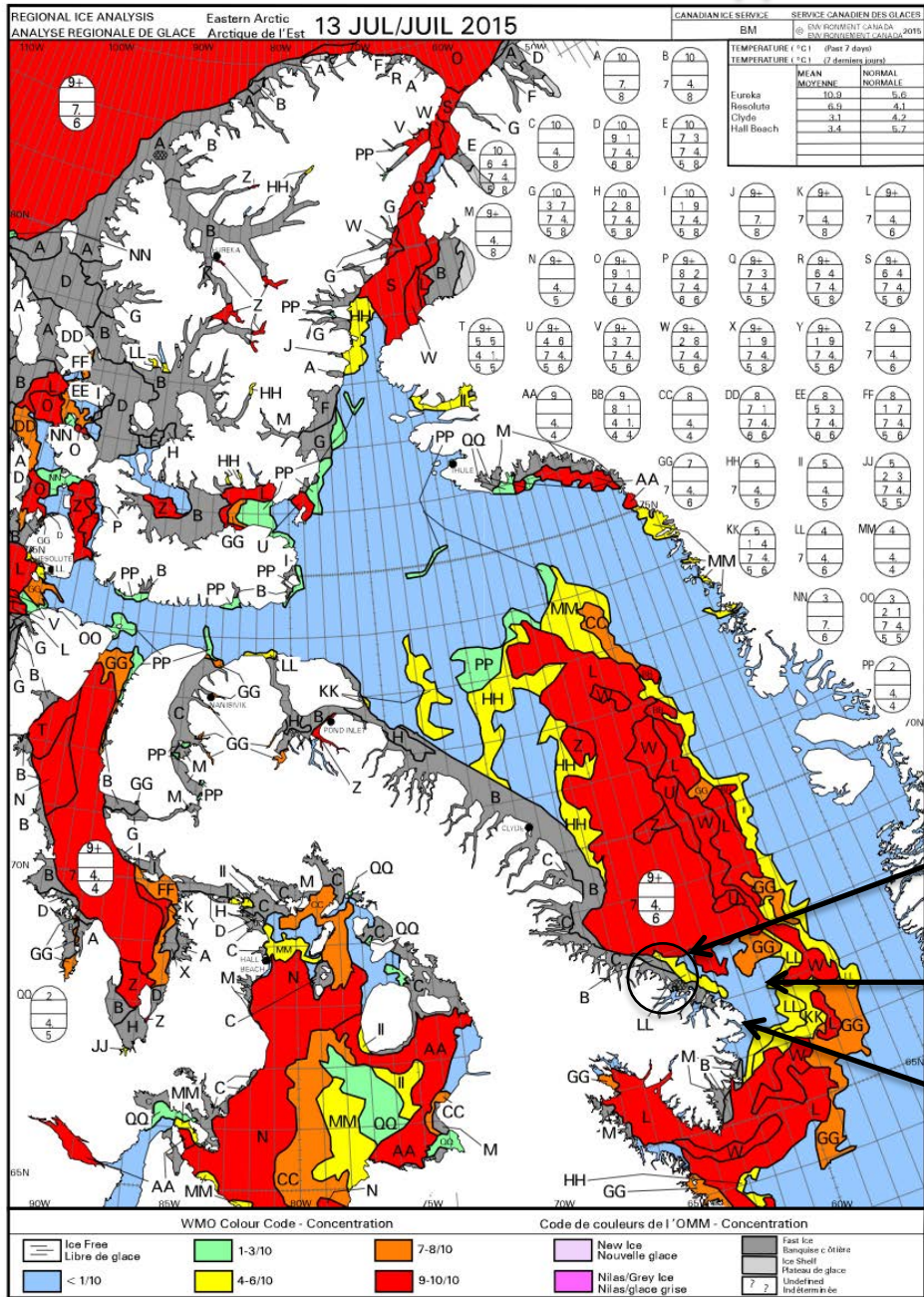
Open Water
Marginal Ice Zone



Ice Camp

Land-Fast Ice Edge

¹in support of the comments



Broughton Island

Origin of the open water rejoining the ice camp

Cap Dyer