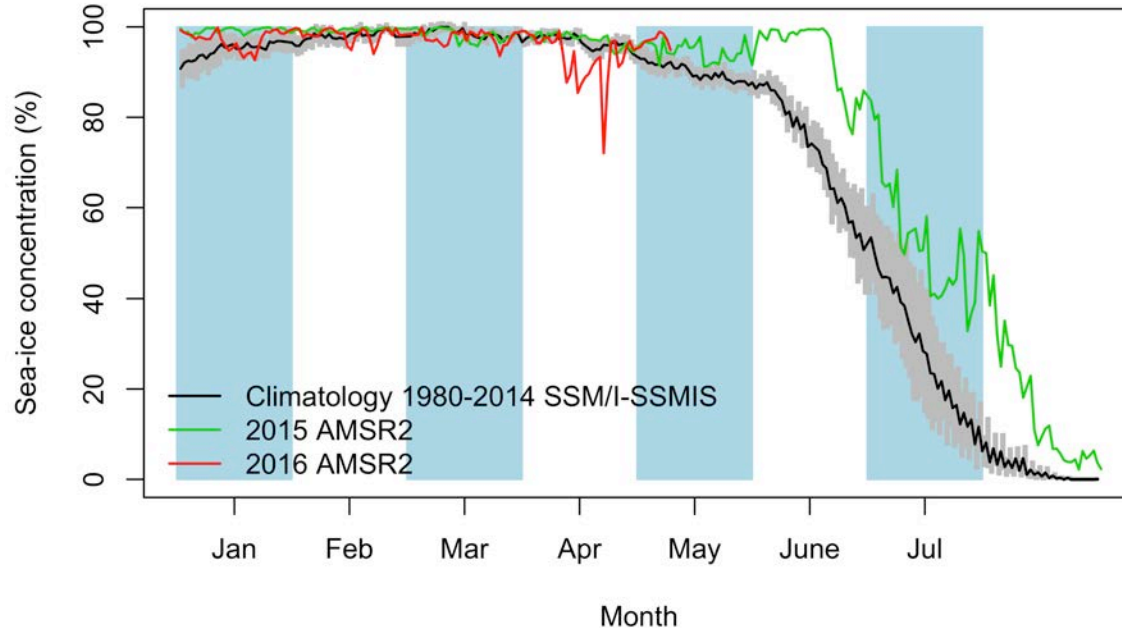


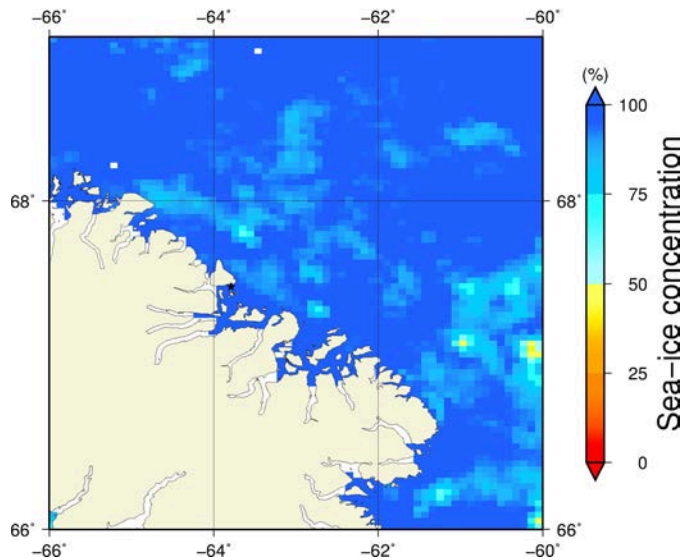
Comments

- We observe a feature (feature A) beyond the land-fast ice edge on AMSR2, MODIS and Sentinel-1 images. It is a narrow open water area as can be seen on the MODIS image.
- We see another feature (feature B) on the Sentinel-1 zoom image. It is a white trace between Qikiqtarjuaq and Baffin Island. You could need to zoom on the PDF to see it. I don't know what it is. My hypothesis is the following. I presume it is tracks left by an expedition of many snowmobiles. The image was acquired on May 9th at 06:06 AM local time. So, this expedition would have occurred the day before the image was taken that is on May 8th. Maybe someone at Qikiqtarjuaq could confirm or infirm that there was an expedition of snowmobiles between Qikiqtarjuaq and Baffin Island on May 8th?

May 9th (AMSR2) Sea-ice concentration in the region 66° to 69°N and -66° to -60°E

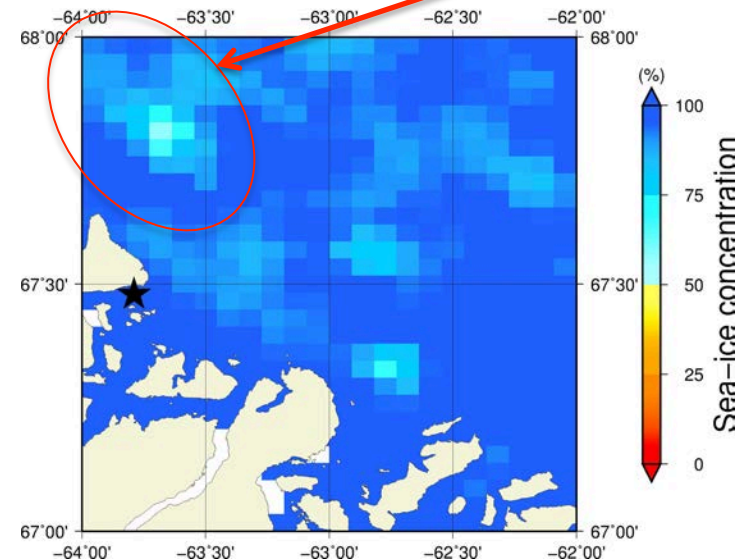


Overview



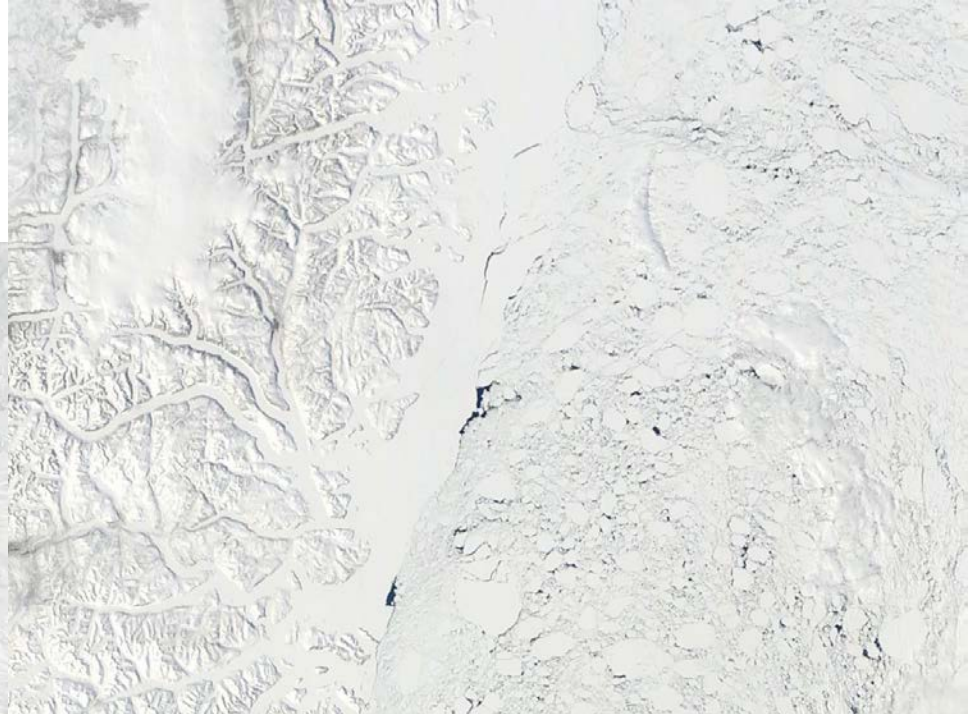
Month

Zoom



Feature A

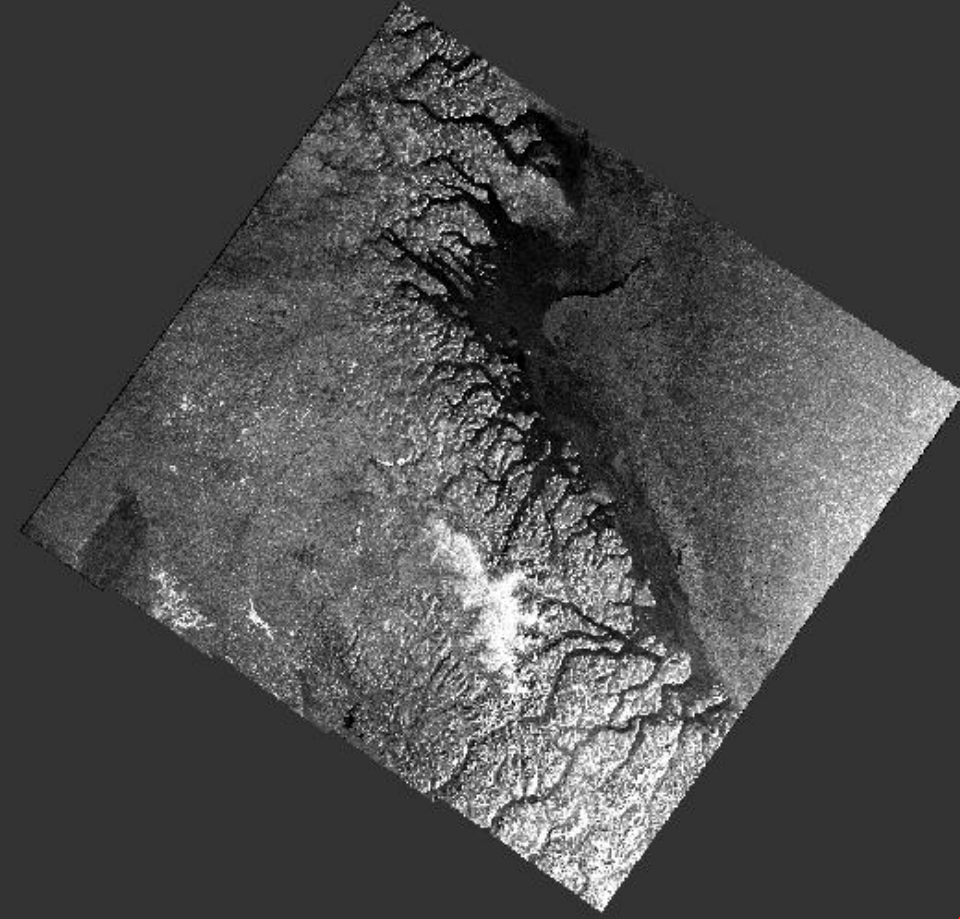
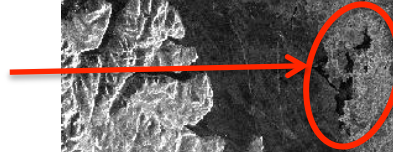
May 9th (MODIS)



Feature A

May 9th (Sentinel-1)

Feature A



Feature B



Ice Camp

24.8 km

Land-Fast Ice Edge

