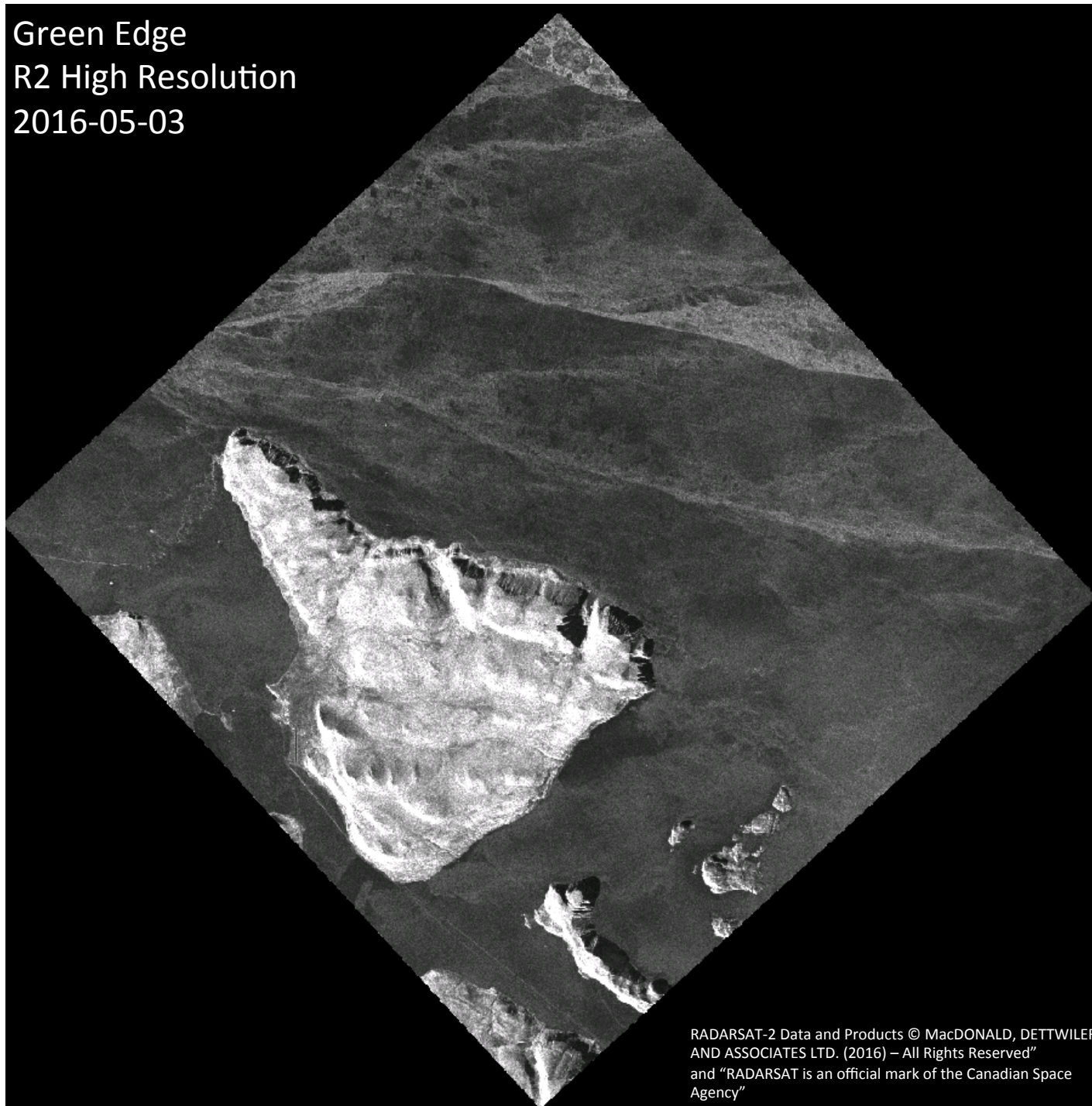


Comments

- Marilee Pregitzer from the Canadian Ice Service sent new high-resolution RADARSAT-2 images. The ice camp identified by Marilee Pregitzer is circled in red. I identified other features in the image. I suppose one is a skidoo track. I suppose the others are shadows west of rocks because the image was generated in the afternoon.
- On the AMSR2 zoom image and the Sentinel-1 overview image, there are three features at the land-fast ice edge. I suppose they are areas less covered by floes of drift ice.
- The geographical area of the Sentinel-1 synoptic image exceptionally recovers both the land-fast ice edge and the marginal ice zone. The distance between the ice camp and the land-fast ice edge is 24.7 km while the distance between the ice camp and the marginal ice zone is 294.0 km.

Green Edge
R2 High Resolution
2016-05-03



RADARSAT-2 Data and Products © MacDONALD, DETTWILER AND ASSOCIATES LTD. (2016) – All Rights Reserved” and “RADARSAT is an official mark of the Canadian Space Agency”

Green Edge
R2 High Resolution
2016-05-03



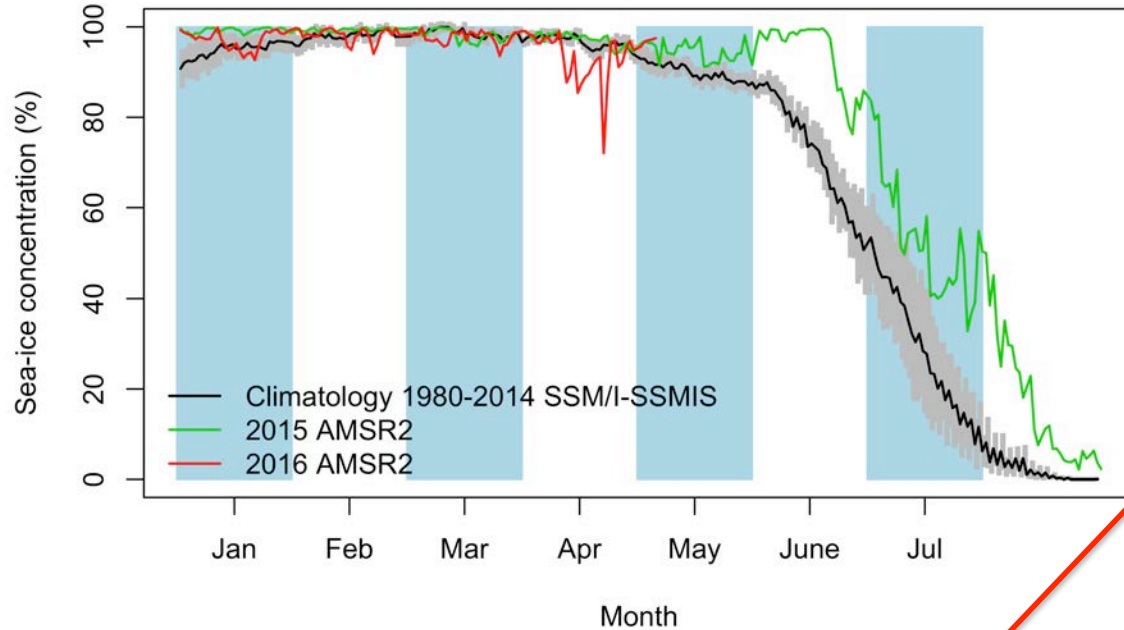
Skidoo tracks

Ice Camp

Shadows

RADARSAT-2 Data and Products © MacDonald,
DEFWILER AND ASSOCIATES LTD. (2016) – All
Rights Reserved
and RADARSAT is an official mark of the Canadian
Space Agency

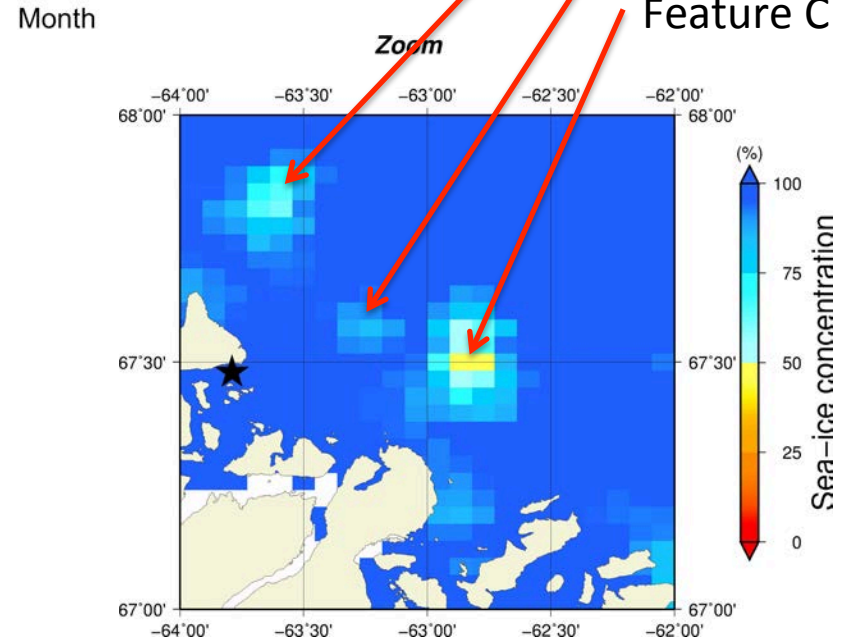
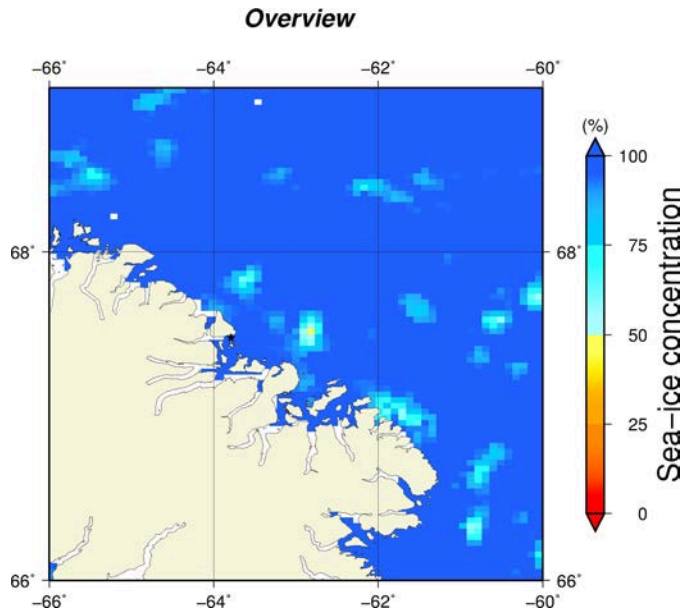
May 5th (AMSR2) Sea-ice concentration in the region 66° to 69°N and -66° to -60°E



Feature A

Feature B

Feature C

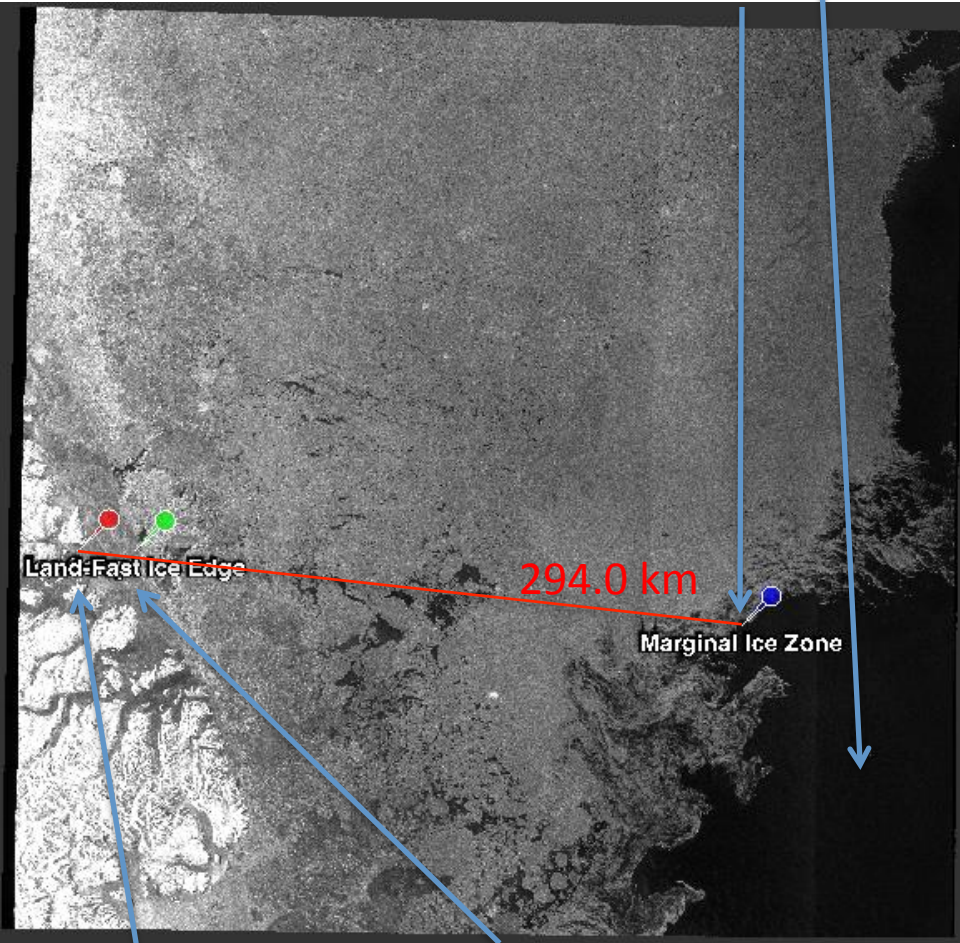


May 5th (MODIS)



May 5th (Sentinel-1)

Open Water
Marginal Ice Zone

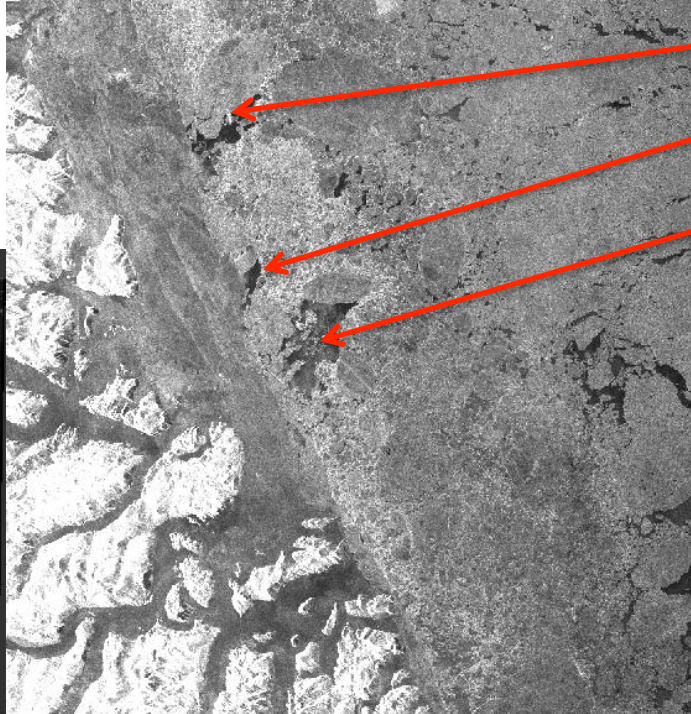


Ice Camp

Land-Fast Ice Edge

Ice Camp

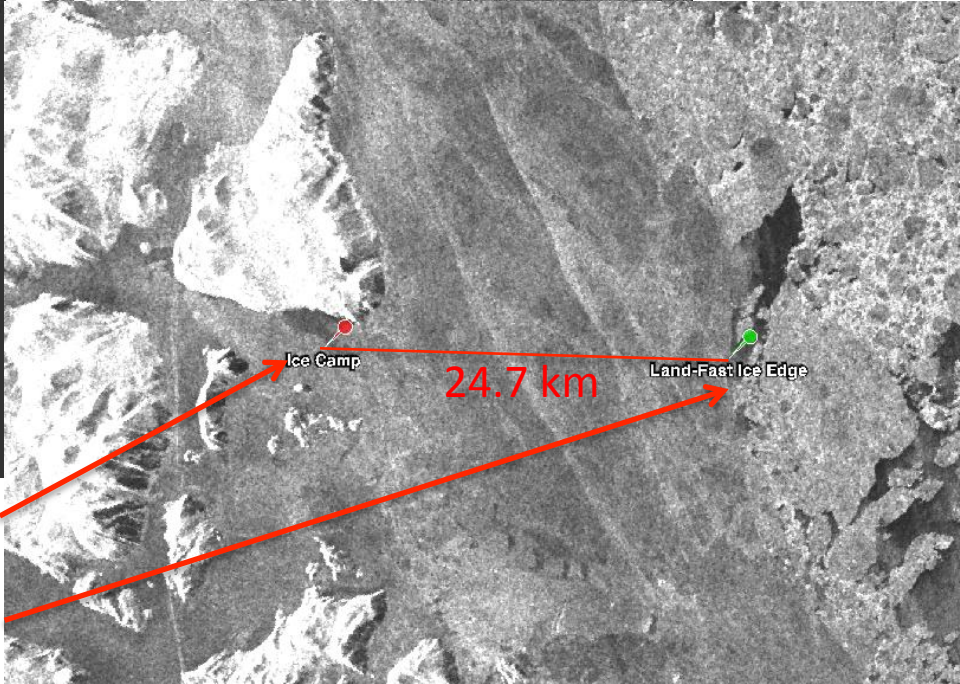
Land-Fast Ice Edge



Feature A

Feature B

Feature C



Ice Camp

24.7 km

Land-Fast Ice Edge