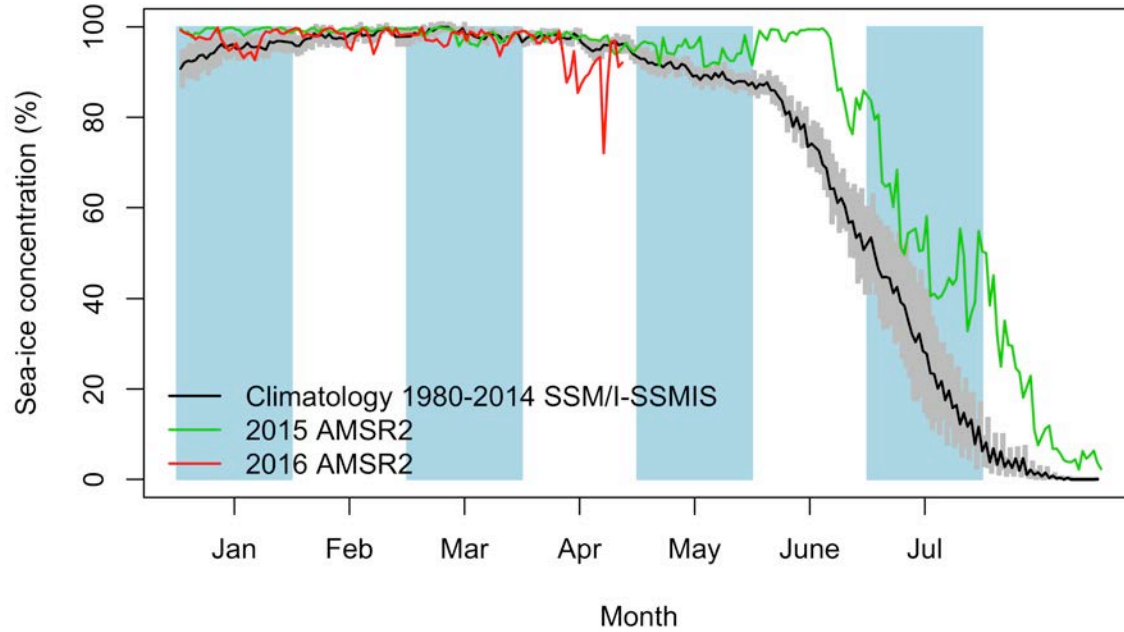


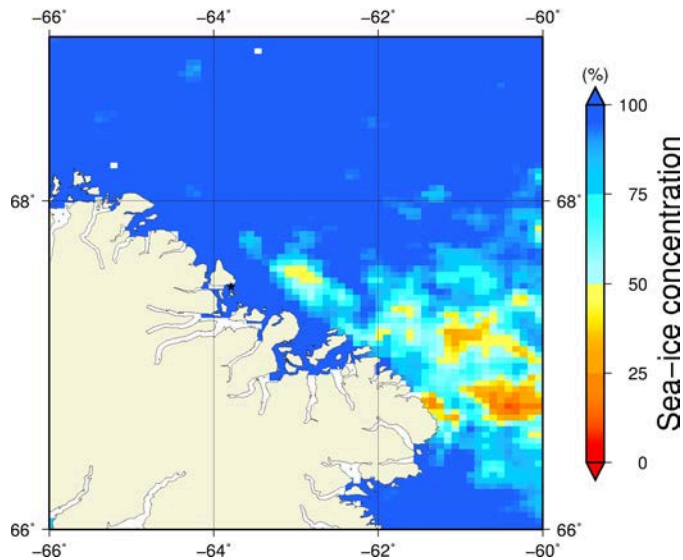
# Comments

- There is many new satellite images today: AMSR2, MODIS, Landsat, Sentinel-1 and the ice charts.
- We see on the MODIS synoptic image and on the ice charts that the east of Davis Strait is now well ice free.

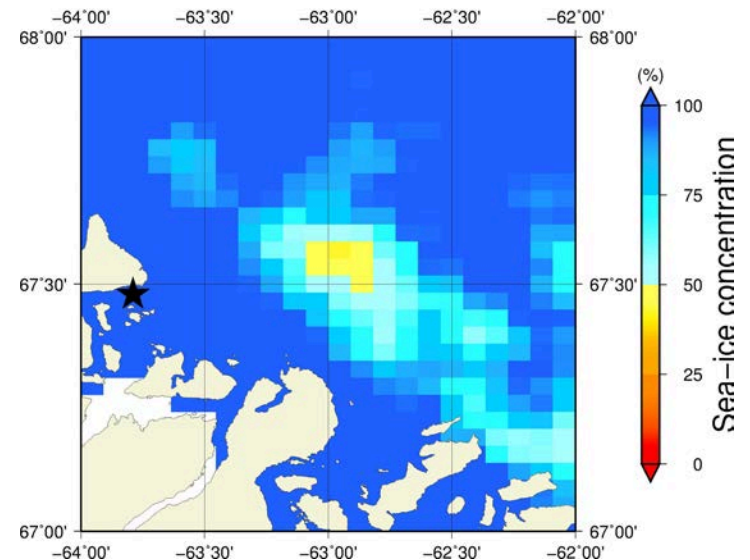
# April 27<sup>th</sup> (AMSR2) Sea - ice concentration in the region 66° to 69°N and -66° to -60°E



**Overview**



**Zoom**

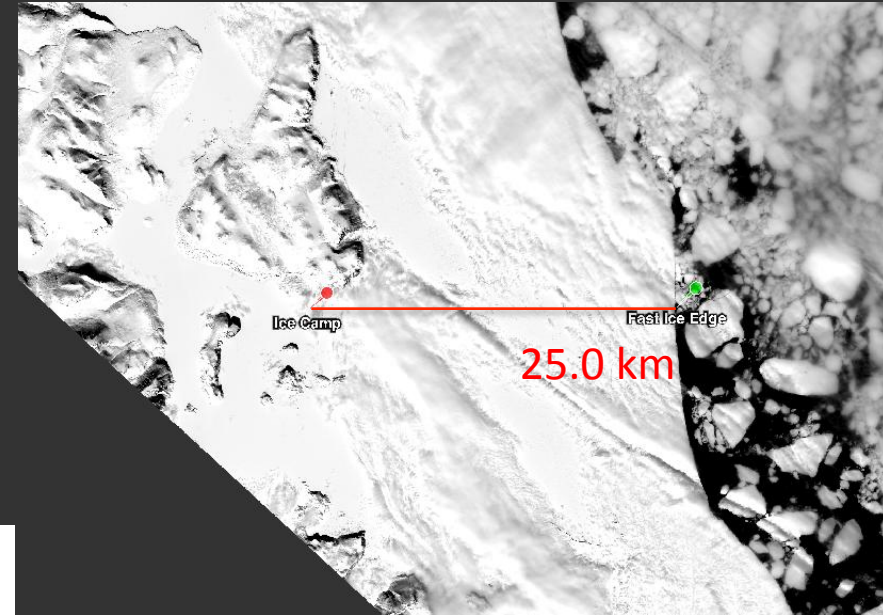
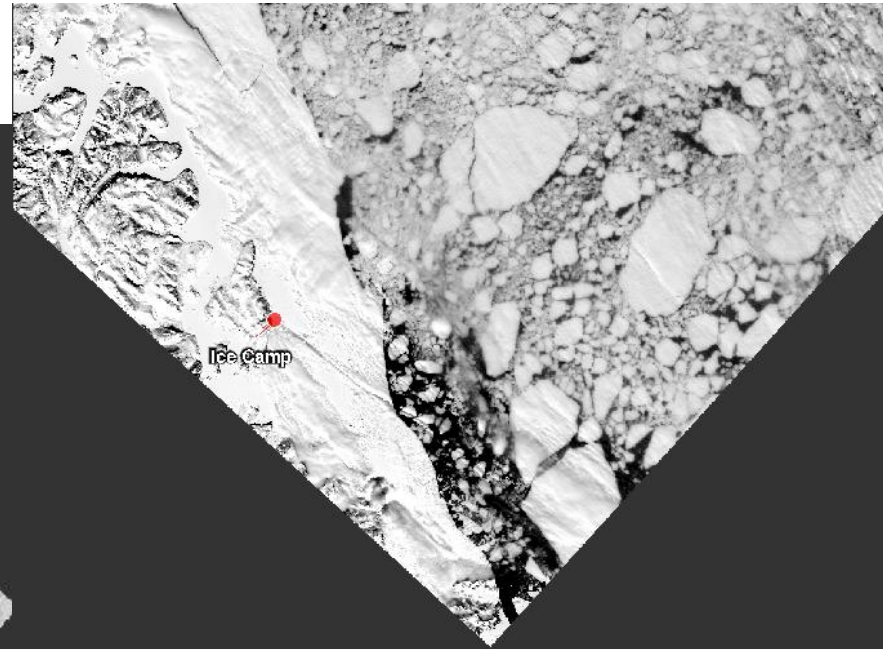
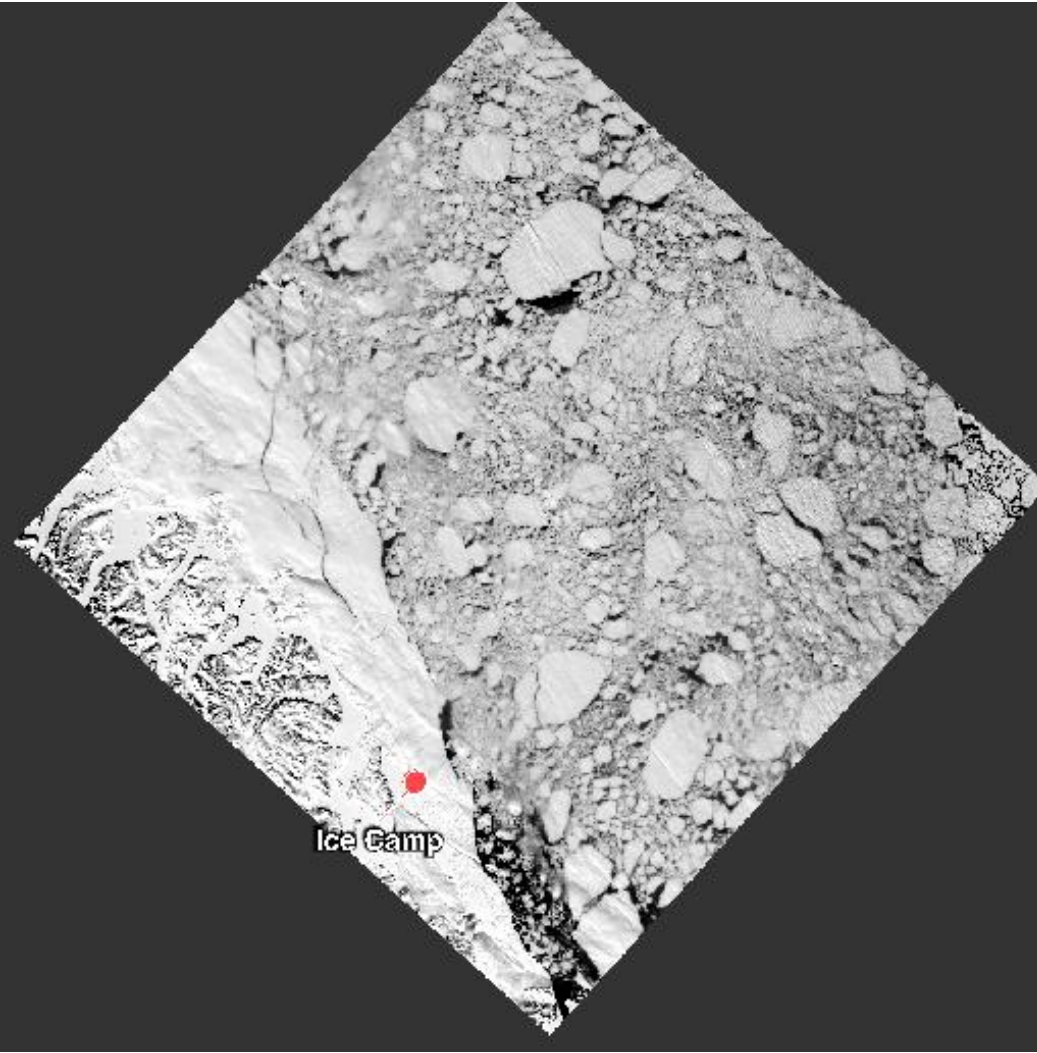


April 27<sup>th</sup> (MODIS)



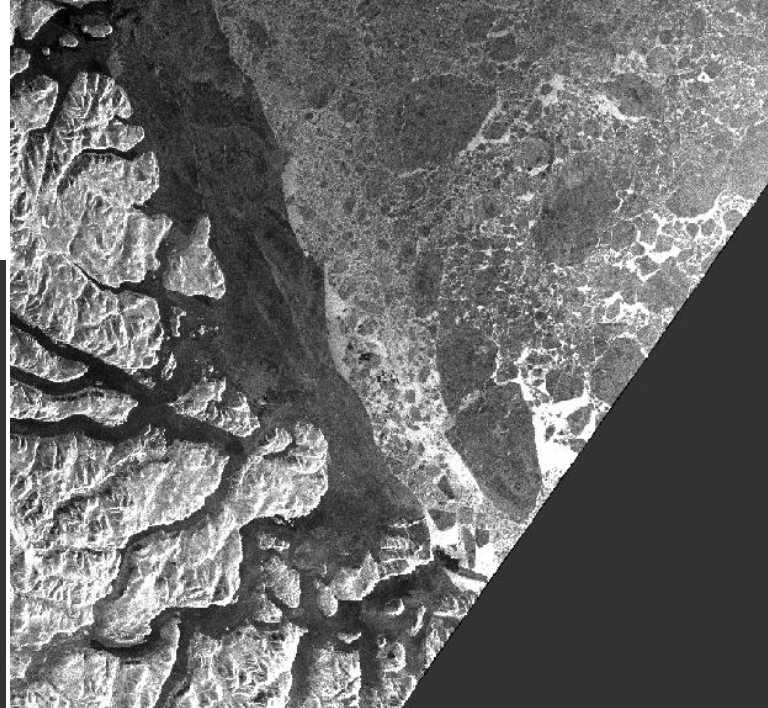
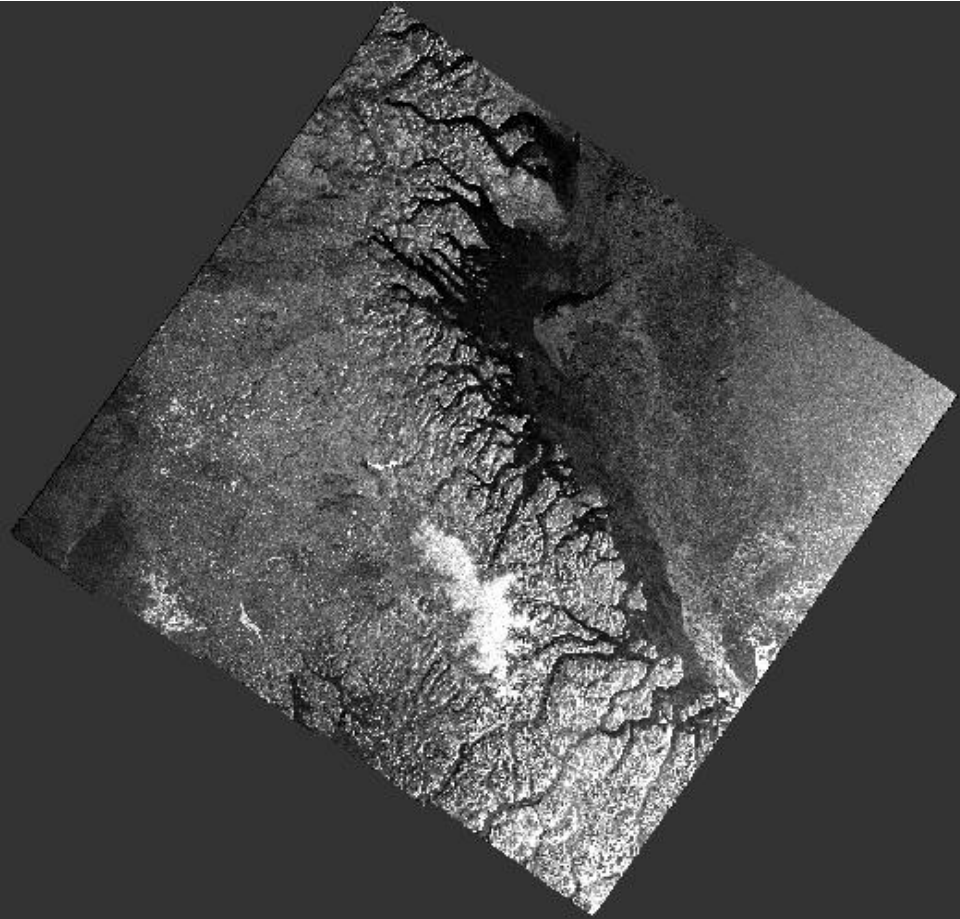


April 27<sup>th</sup> (Landsat)





April 27<sup>th</sup> (Sentinel-1)





# Sea-ice concentration

# CIS Ice charts

# Stage of development

