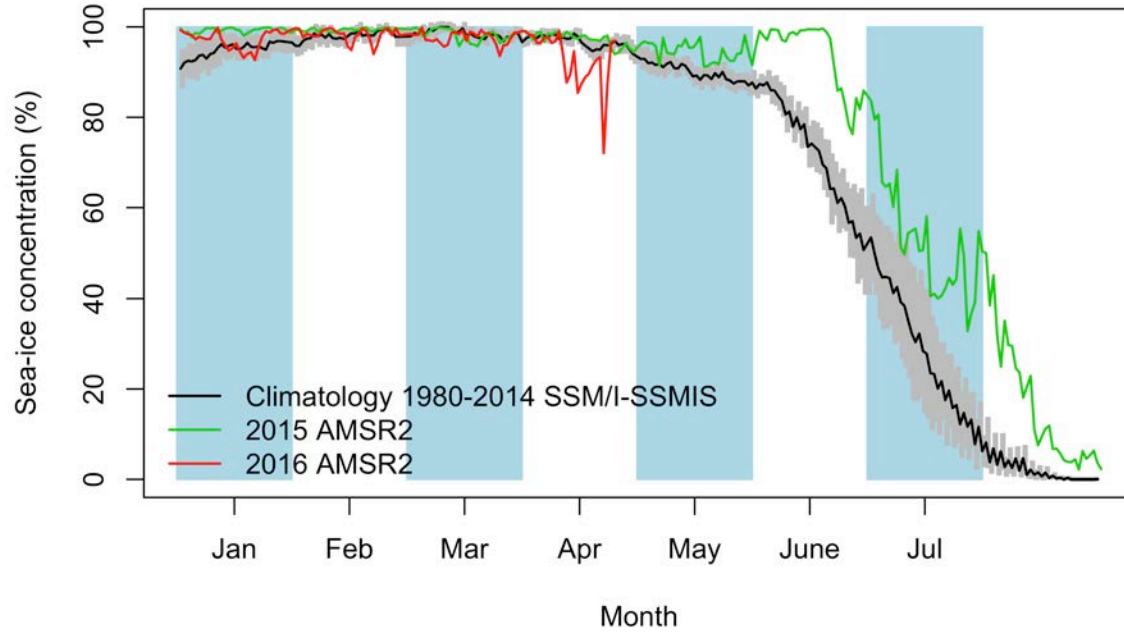


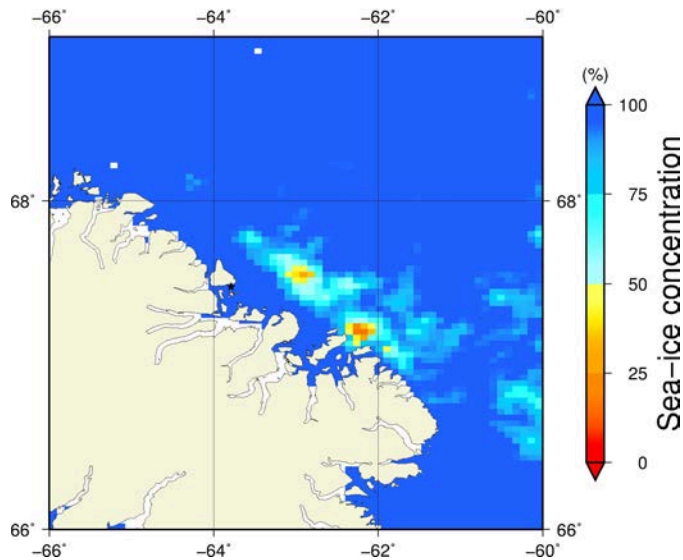
# Comments

Marilee Pregitzer from the Canadian Ice Service (CIS) sent us a RADARSAT-2 High Resolution image.

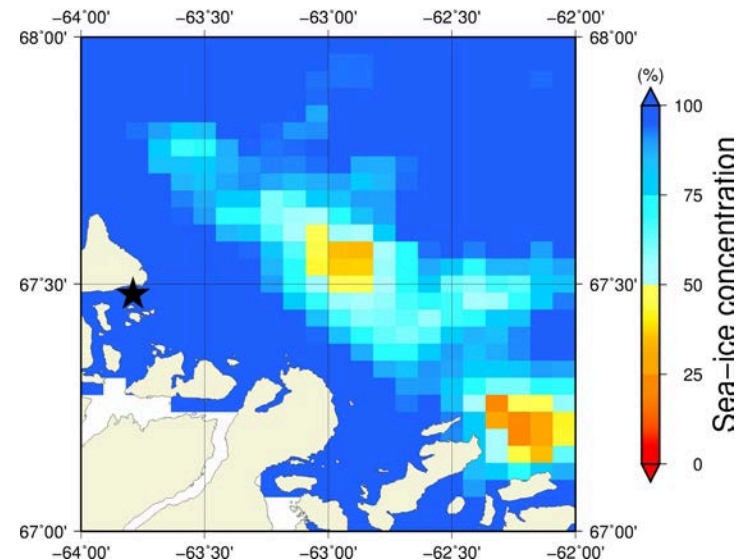
# April 25<sup>th</sup> (AMSR2) Sea - ice concentration in the region 66° to 69°N and -66° to -60°E



**Overview**



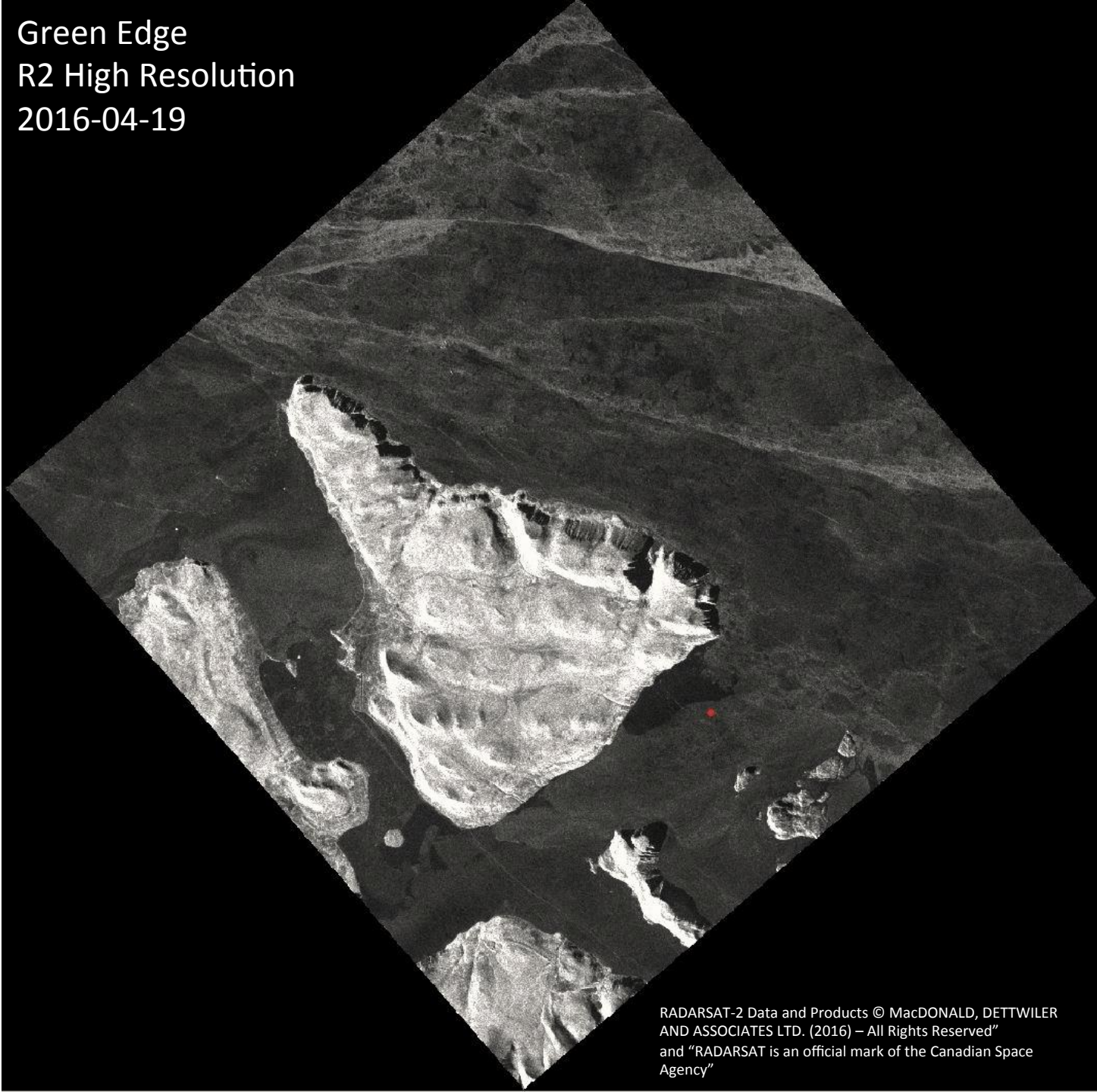
**Zoom**



April 25<sup>th</sup> (MODIS)



Green Edge  
R2 High Resolution  
2016-04-19



RADARSAT-2 Data and Products © MacDONALD, DETTWILER  
AND ASSOCIATES LTD. (2016) – All Rights Reserved”  
and “RADARSAT is an official mark of the Canadian Space  
Agency”