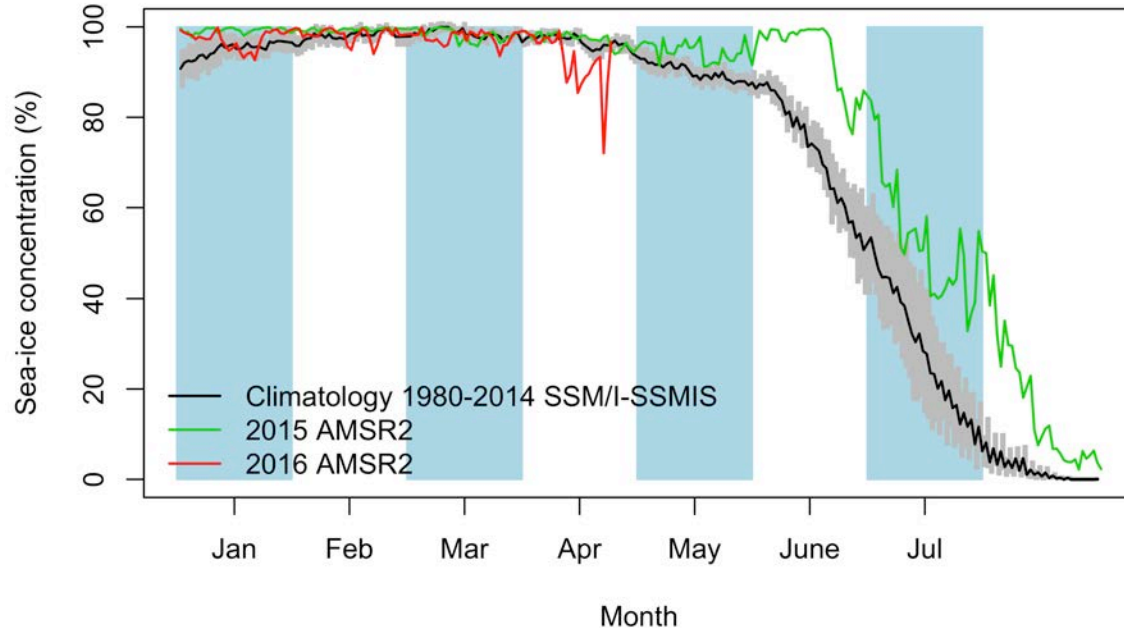


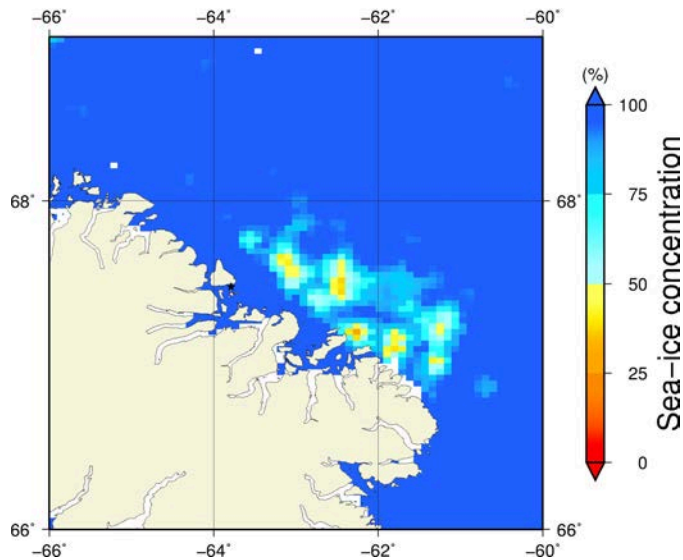
# Comments

- This is an account of the modifications observed since April 21<sup>st</sup>.
- According to the AMSR2 plot, there was a hollow in the sea ice concentration on April 22<sup>nd</sup> but the sea ice concentration recuperated values in the climatology.
- On the other hand, the distance between the ice camp and the landfast ice edge didn't recuperate its value. It passed from 32 km to 25 km between April 21<sup>st</sup> and April 24<sup>th</sup>.

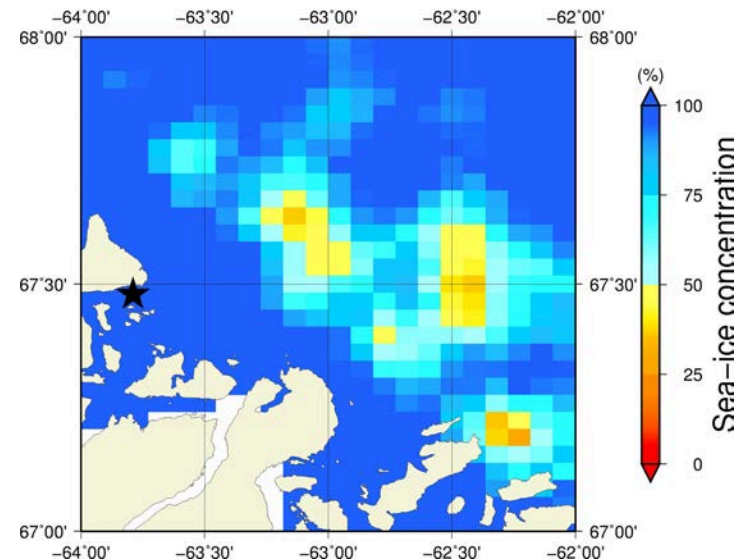
# April 4<sup>th</sup> (AMSR2) Sea-ice concentration in the region 66° to 69°N and -66° to -60°E



**Overview**



**Zoom**



April 24<sup>th</sup> (MODIS)



April 24<sup>th</sup> (Sentinel-1)

