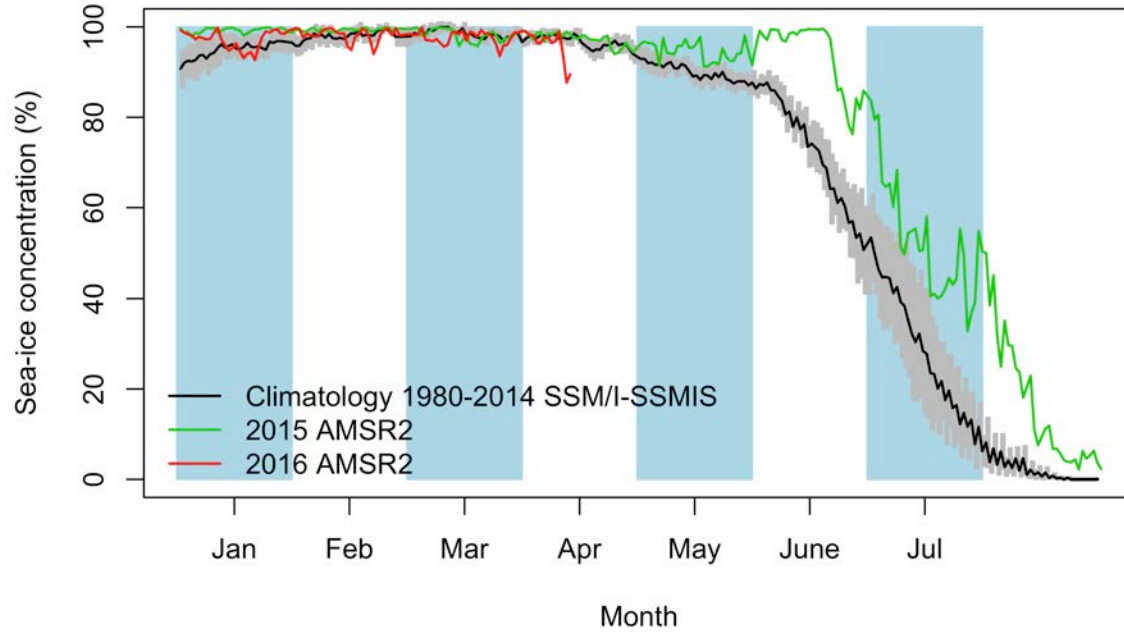


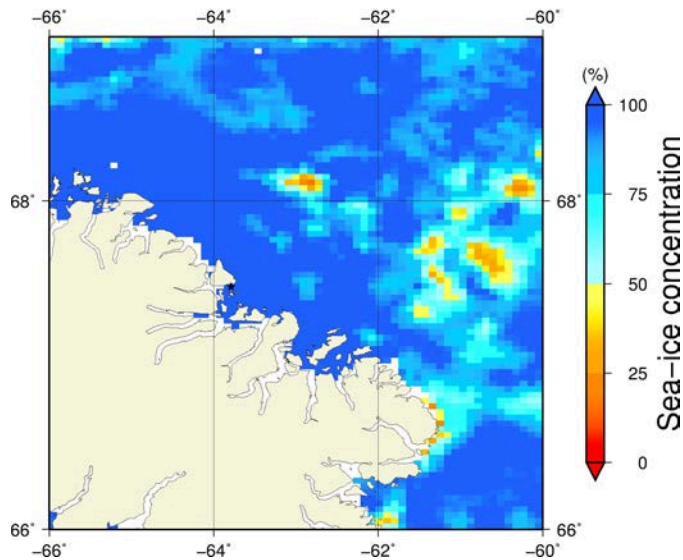
# Comments

- The AMSR2 plot shows a drop in the concentration of sea ice since April 11<sup>th</sup>. The concentration of sea ice is now 90%, which is below the climatology.

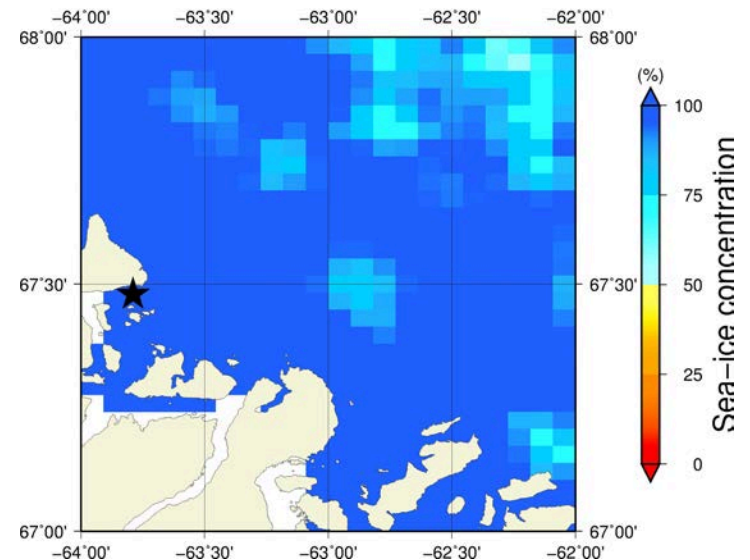
# April 13<sup>th</sup> (AMSR2) Sea - ice concentration in the region 66° to 69°N and -66° to -60°E



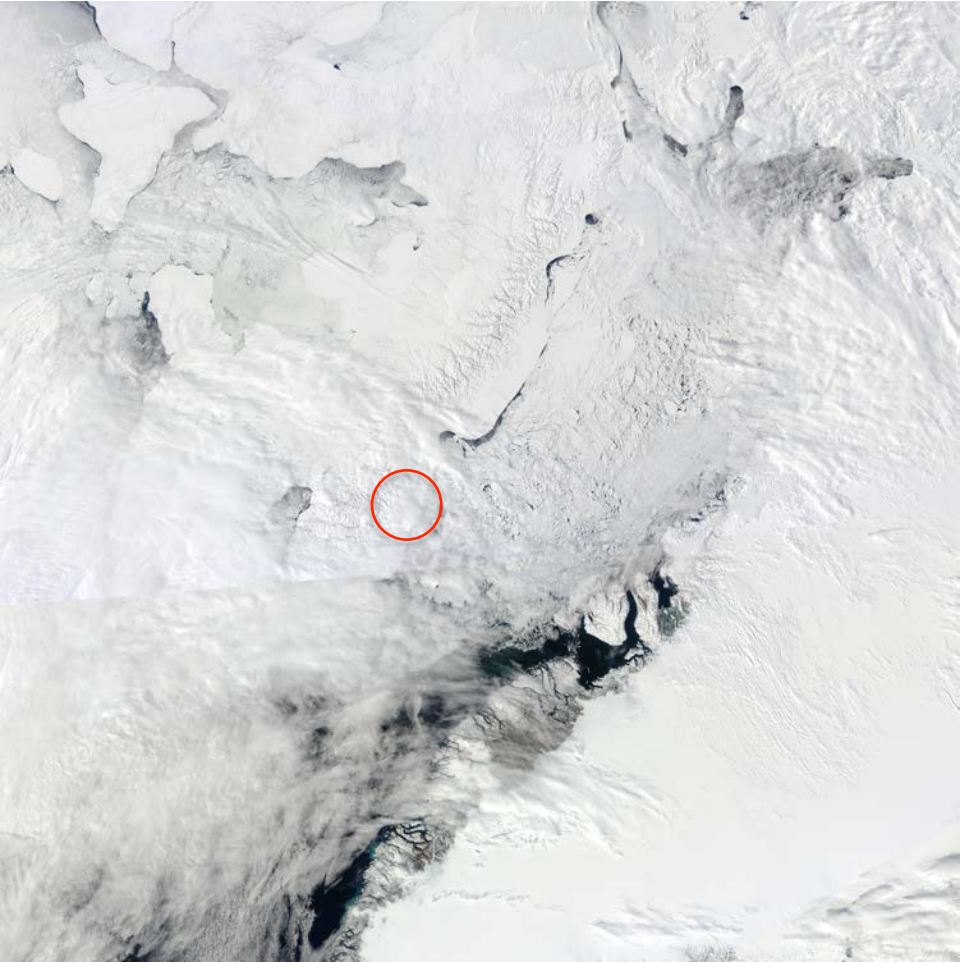
**Overview**



**Zoom**



April 13<sup>th</sup> (MODIS)



# Sea-ice concentration

# CIS Ice charts

# Stage of development

