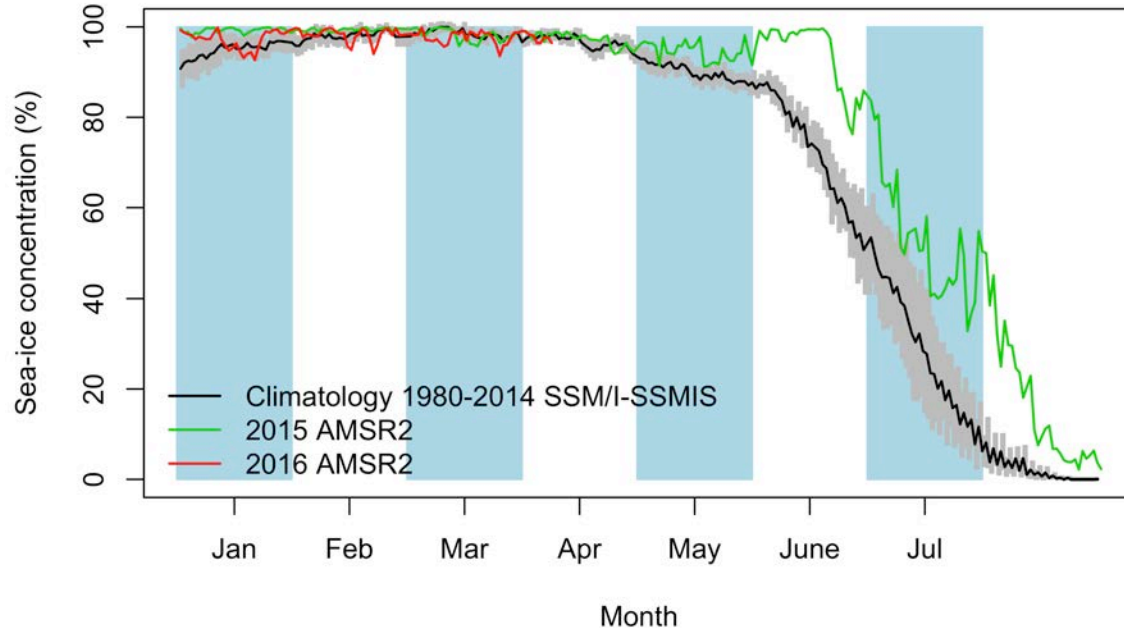
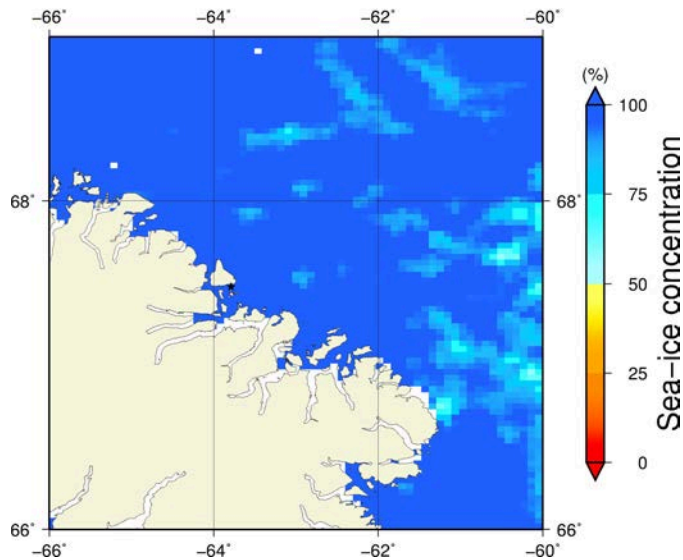


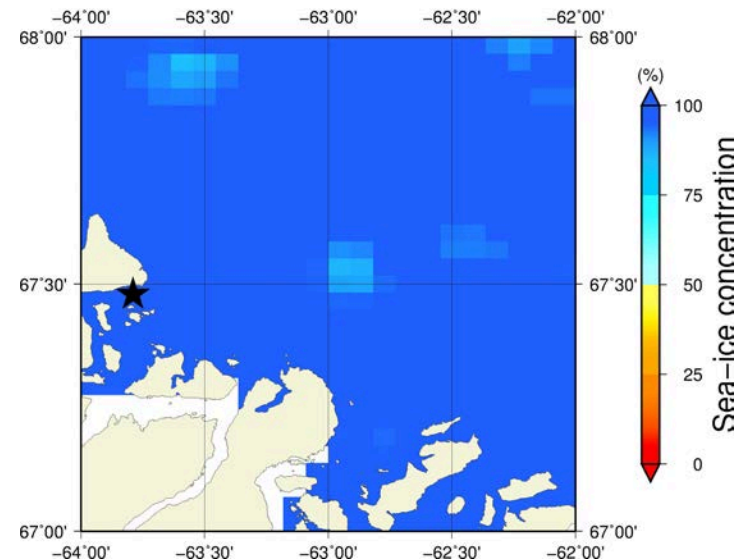
April 8th (AMSR2) Sea-ice concentration in the region 66° to 69°N and -66° to -60°E



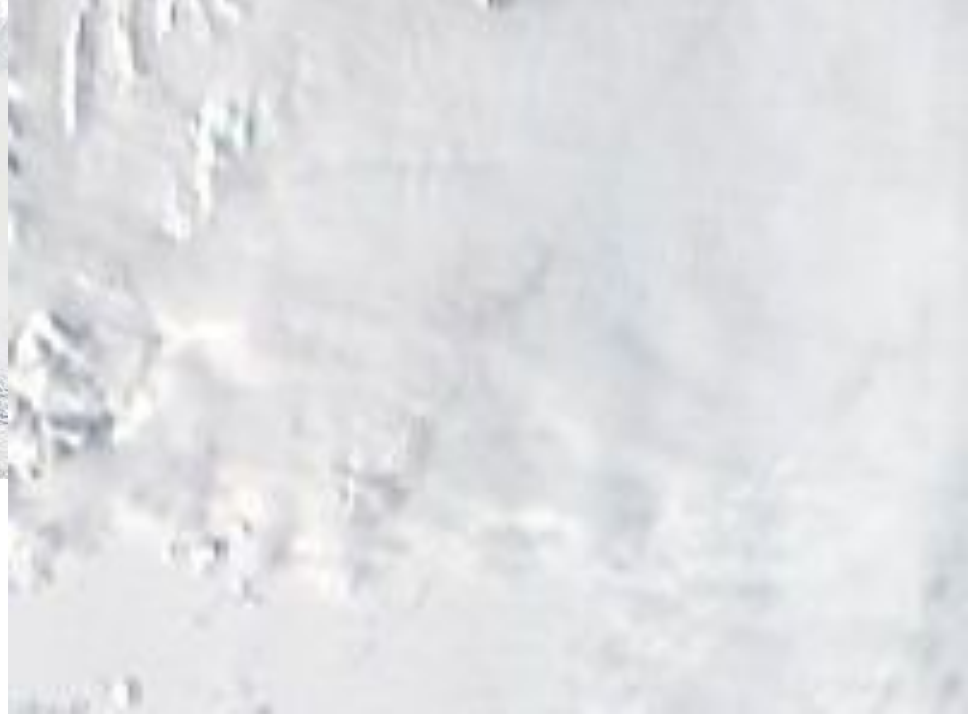
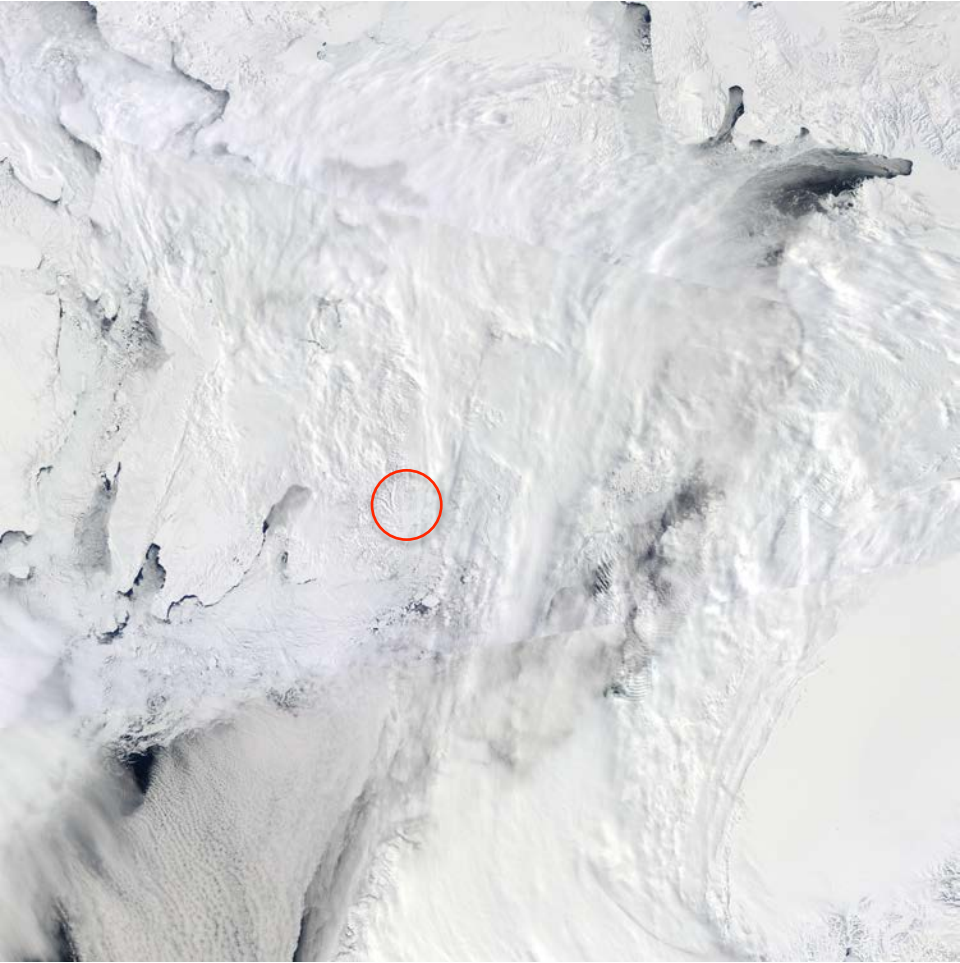
Overview

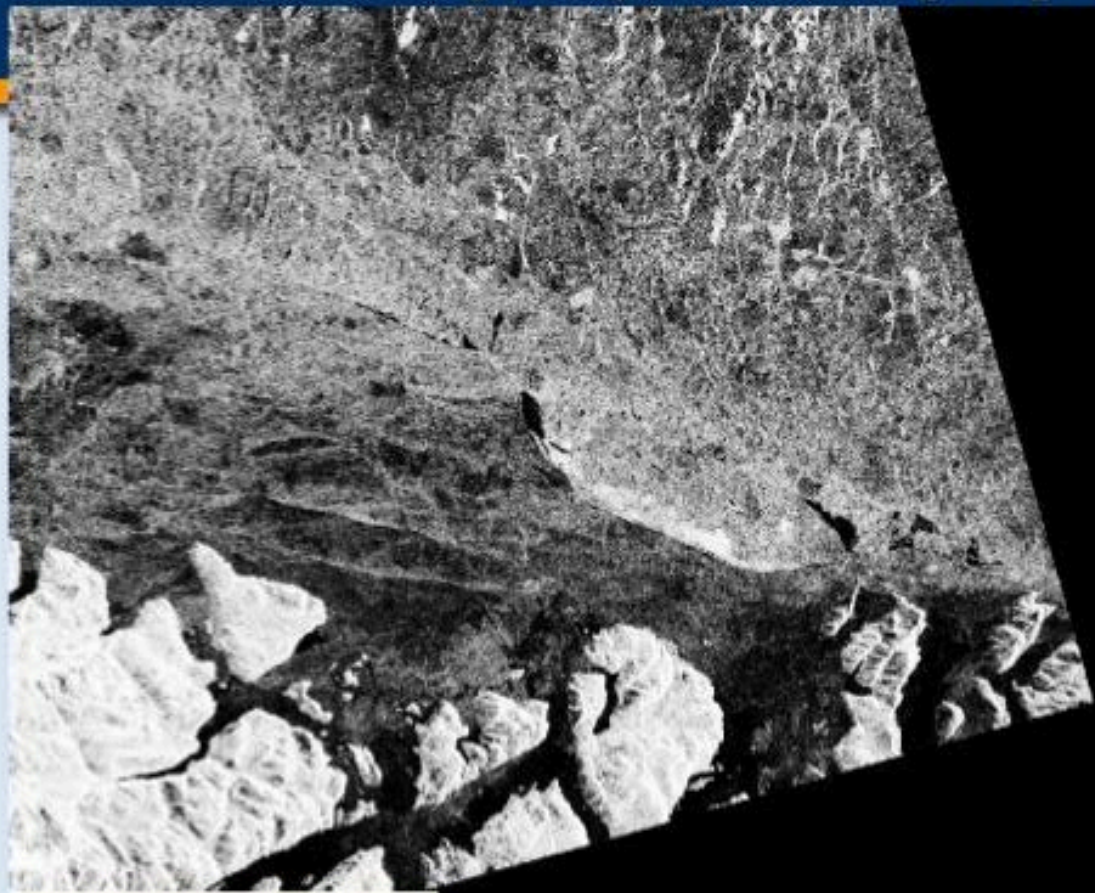


Zoom



April 8th (MODIS)





Legend / ᖃᓂᐃᓕᖃᓂᖅ

- Floe Edge / ᓂᓂᖅ
- ≡ Moving Ice Open Water / ᓂᓂ ᐃᖅᖅᖅ ᐃᓂᐃᓂᖅ
- Land Fast Ice / ᓂᓂᖅ
- 30 year average / 30 ᖅᖅᖅ ᐃᓂᐃᓂ ᓂᓂᖅᖅᖅ

April 8th (Sentinel-1)

