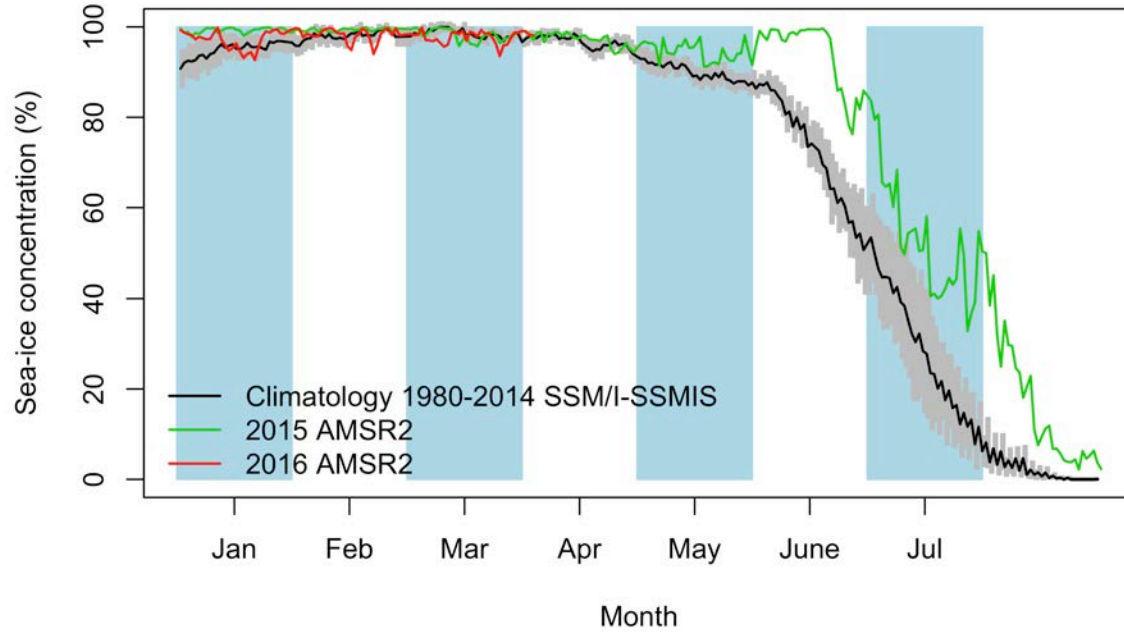
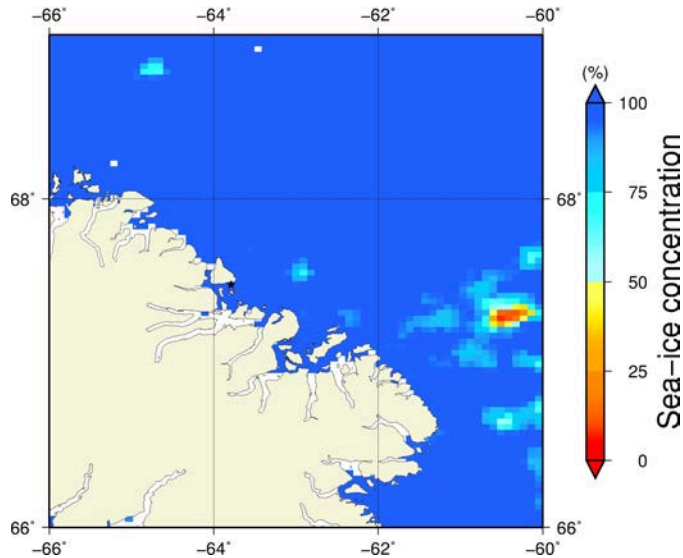


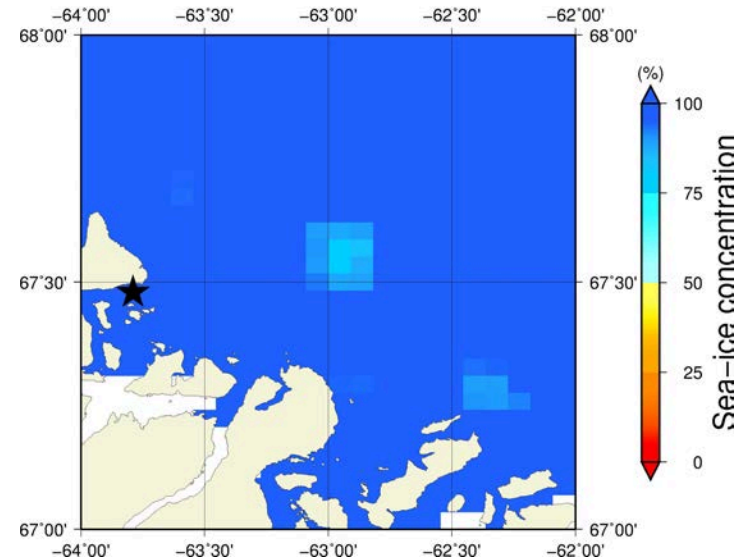
April 3rd (AMSR2) Sea-ice concentration in the region 66° to 69°N and -66° to -60°E



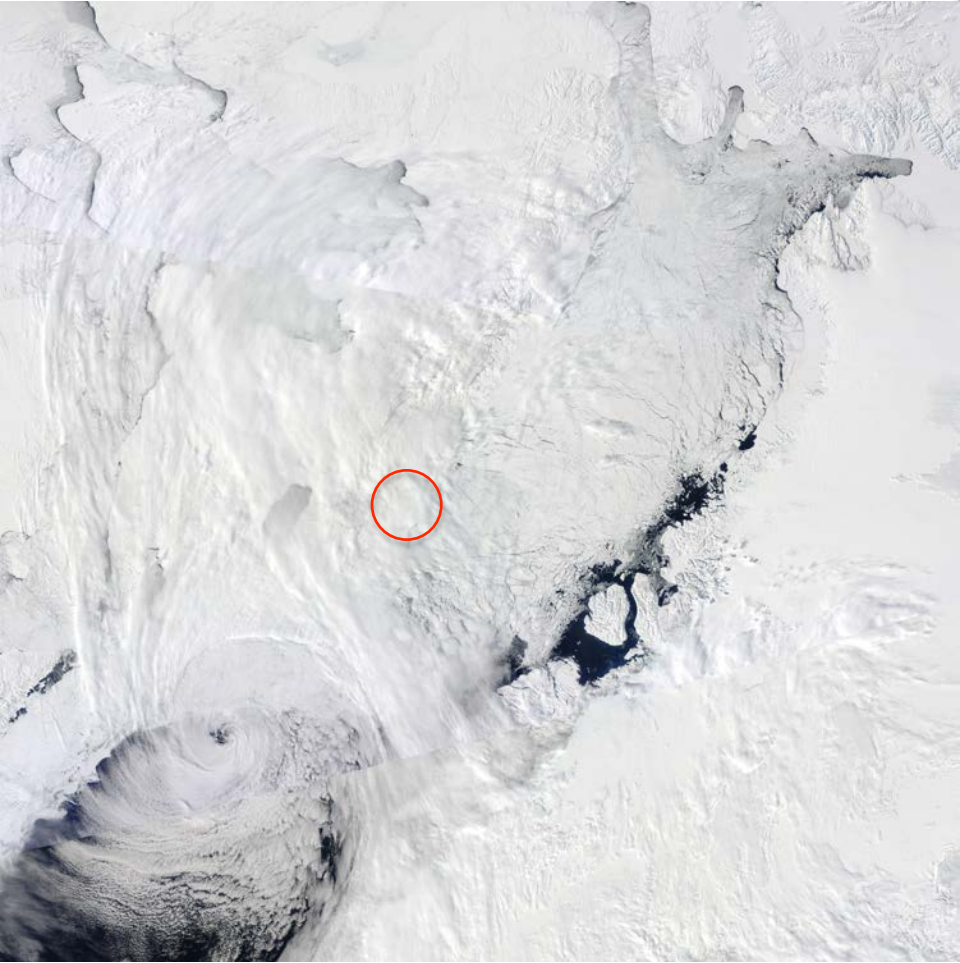
Overview



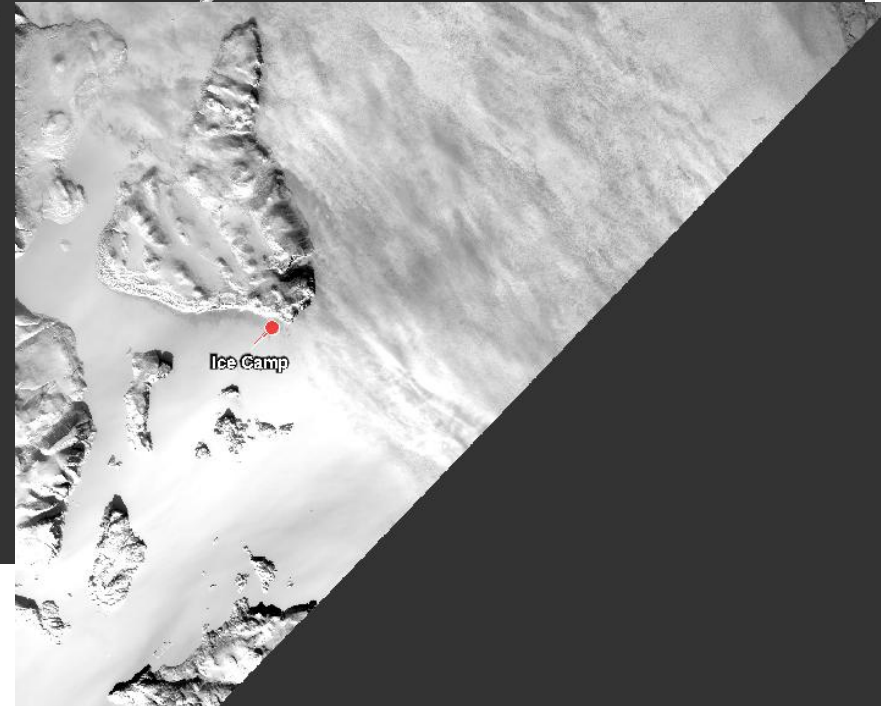
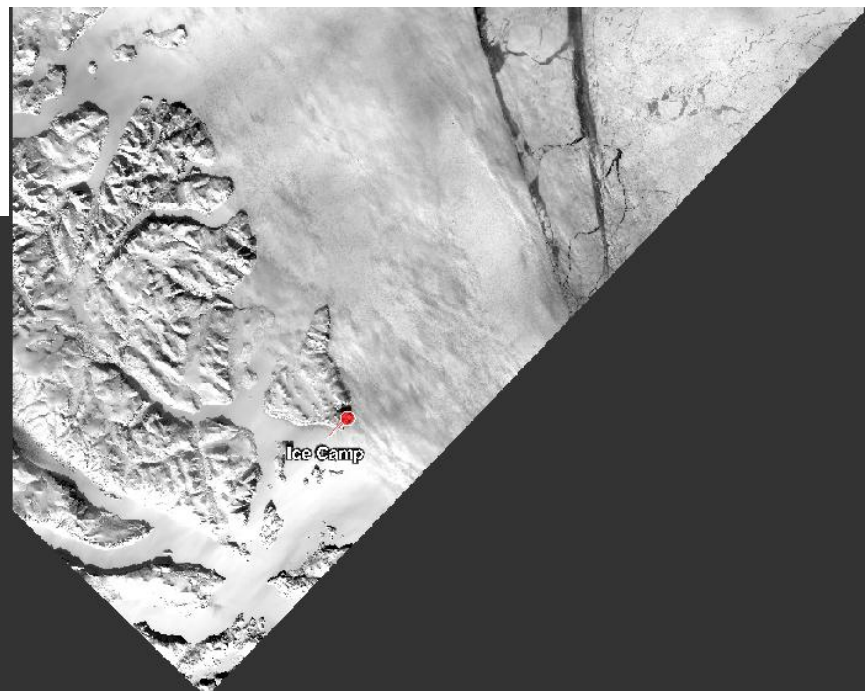
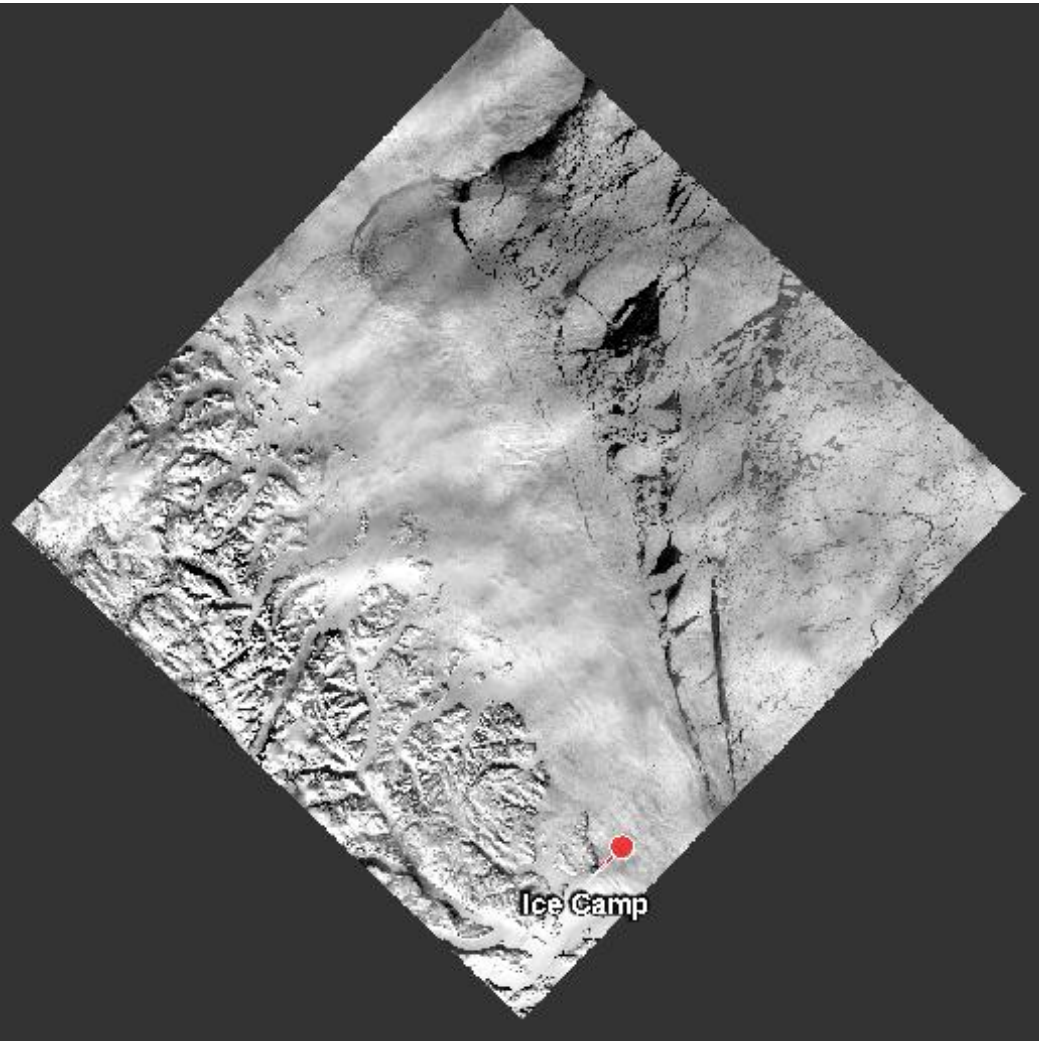
Zoom

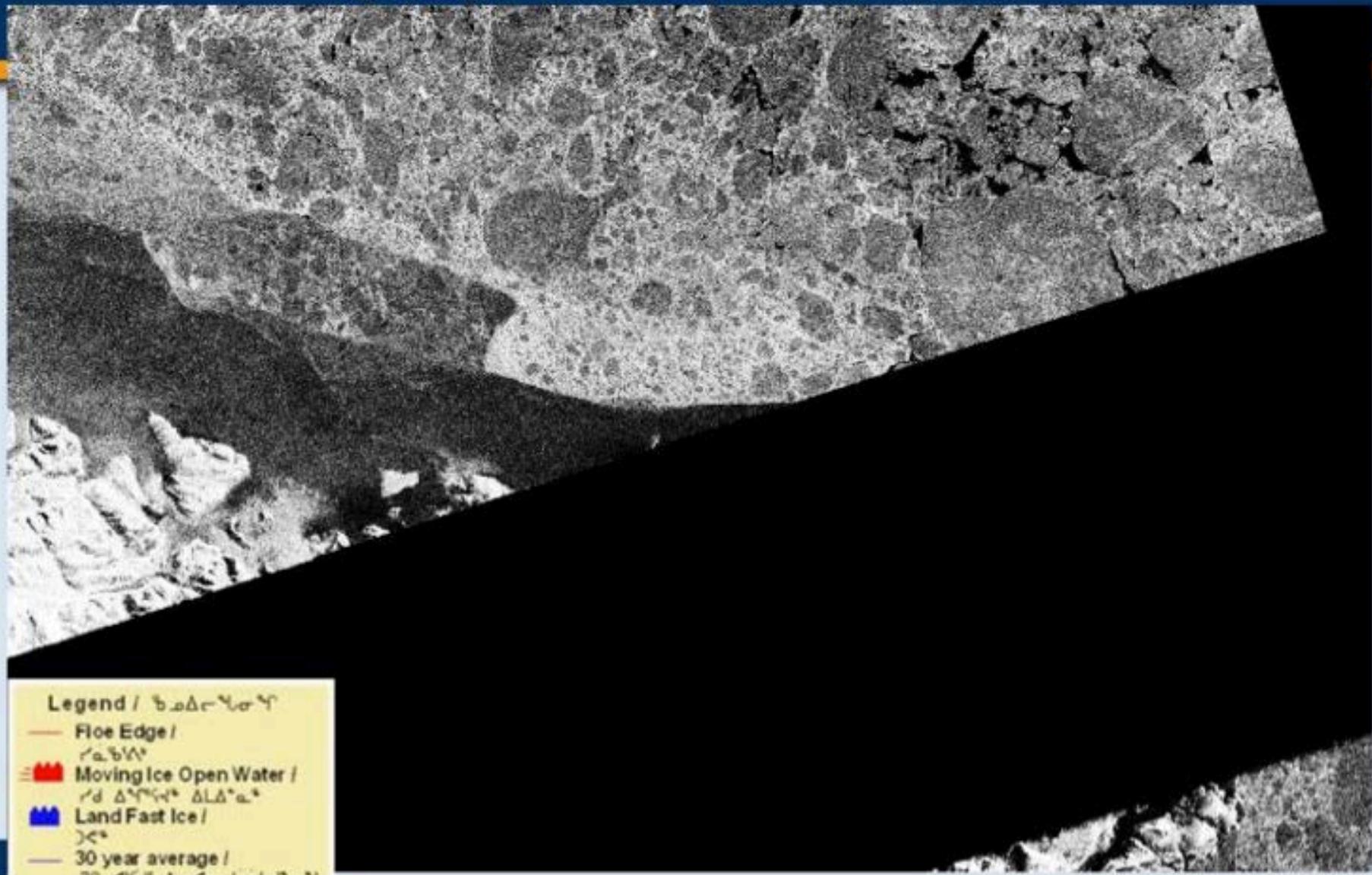


April 3rd (MODIS)



April 2nd (Landsat)

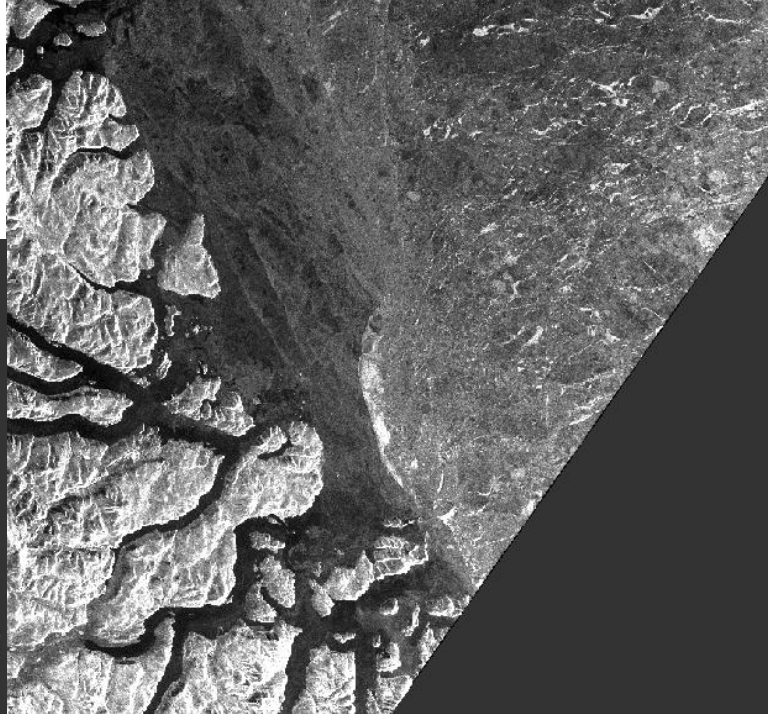
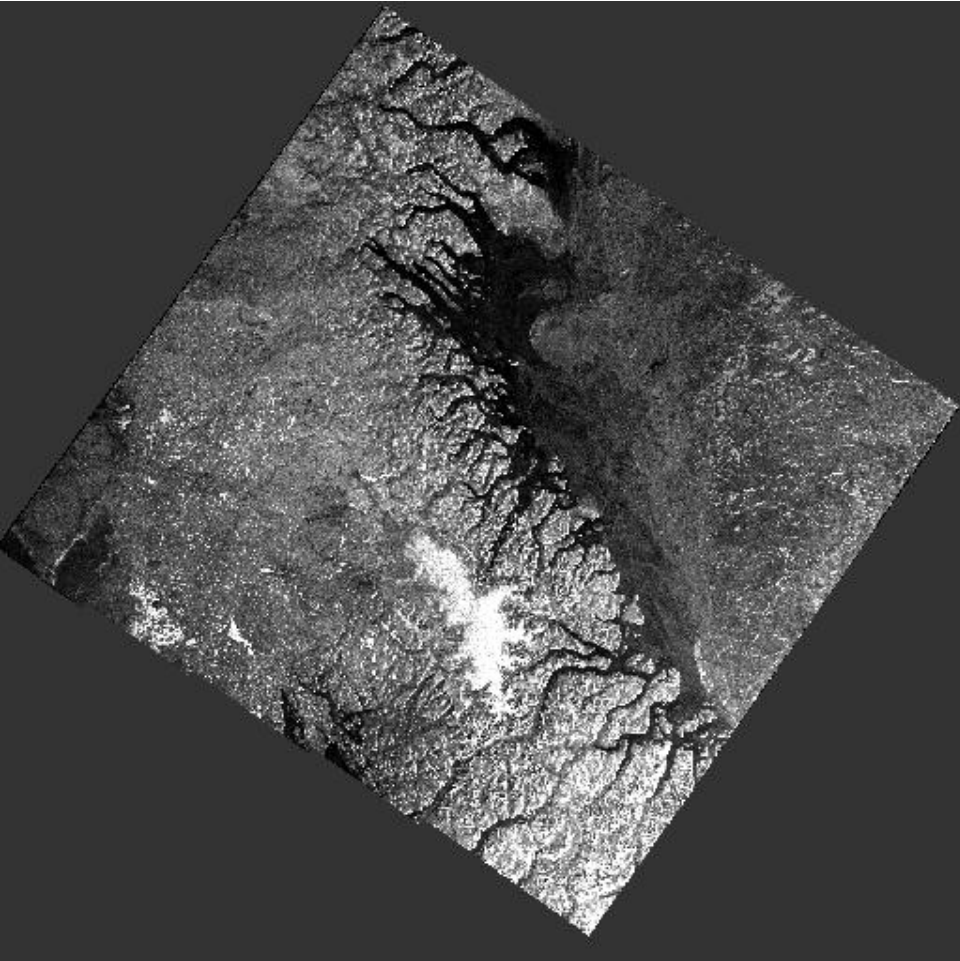




Legend / ᑭᓄᓄᓕᓴᓂᓴ

- Floe Edge / ᓴᓂᓴᓴ
-  Moving Ice Open Water / ᓴᓄ ᓄᓴᓴᓴᓴ ᓄᓴᓄᓴᓴᓴ
-  Land Fast Ice / ᓴᓴᓴ
- 30 year average / 30 ᓄᓴᓴᓴ ᓄᓴᓴᓴ ᓴᓴᓴᓴᓴᓴ

April 3rd (Sentinel-1)



Sea-ice concentration

CIS Ice charts

Stage of development

